



N56 W24879 N CORPORATE CIRCLE
SUSSEX, WI 53089

FEATURES

Prime industrial opportunity featuring approximately 22,250 square feet of space on a 2.3 acre site constructed in 2003. Currently occupied by a singular user, the building was designed for versatility and can accommodate multiple users if desired. Positioned less than 20 miles from downtown Milwaukee at the northern entrance of the desirable Sussex Corporate Center, the property boasts visibility from Highway 164 and offers easy access to major routes, including Capitol Drive, I-94 and Highway 45.

Building Size: **22,250 SF (+/- 14,250 SF Office / +/-8,000 SF**

Warehouse)

Clear Height: **16'**

Drive in Doors: **5 Total (10' x 12')**

Zoning: **BP-1**

Sewer: **Municipal / Water: Municipal**

A/C: **Zoned Split System**

Sprinkler: **Automatic Wet System Throughout**

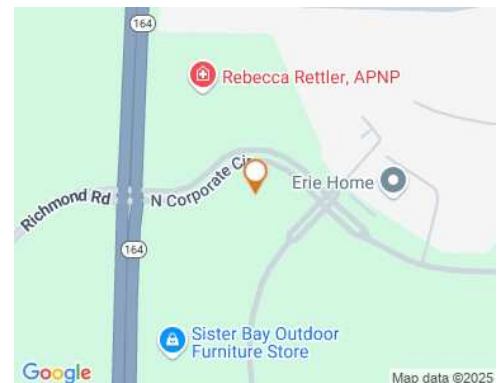
Parking Spaces: **Surface Lot with +/- 92 Spaces**

Restrooms: **7 (seven)**

Tax Key #: **SUXV0278999066**

Property Taxes: **\$23,498.82 (2024)**

Listing: **4786**



INDUSTRIAL FOR SALE

Total SF: **22,250**

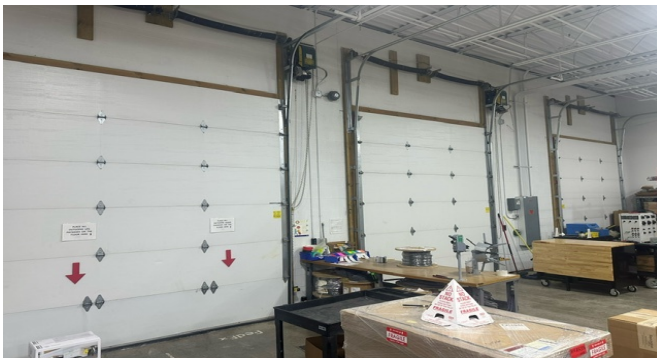
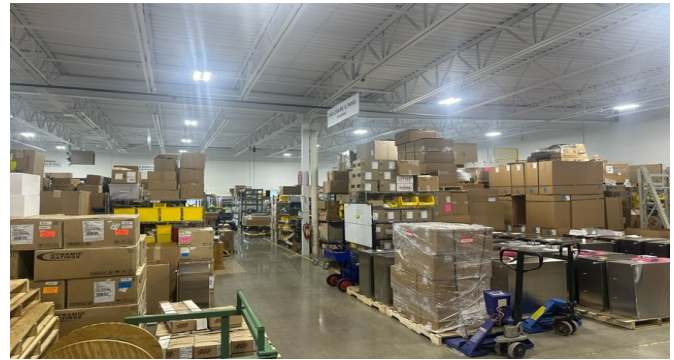
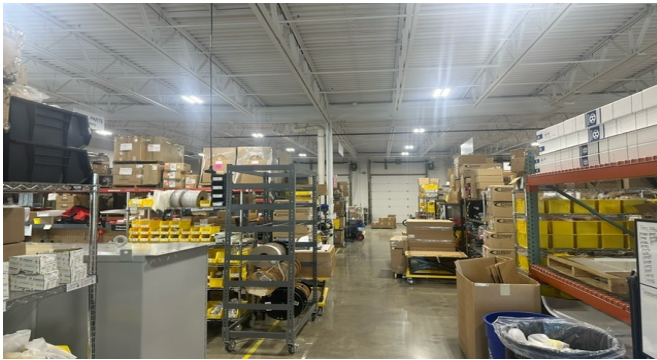
Total Acres **2.30**

Sale Price: **\$2,500,000.00**

Cole Russell, Senior VP-Sales / SIOR
262-695-8800
crussell@judsonrealestate.com

Matthew Judson, President
262-695-8800
matt.judson@judsonrealestate.com

Judson & Associates, S.C.
2831 N. Grandview Blvd, Suite 222
Pewaukee, WI 53072



Cole Russell, Senior VP-Sales / SIOR
262-695-8800
crussell@judsonrealestate.com

Matthew Judson, President
262-695-8800
matt.judson@judsonrealestate.com

Judson & Associates, S.C.
2831 N. Grandview Blvd, Suite 222
Pewaukee, WI 53072

N56 W24879 N Corporate Circle, Sussex, WI



Cole Russell, Senior VP-Sales
262-695-8800
crussell@judsonrealestate.com

Matthew Judson, President
262-695-8800
matt.judson@judsonrealestate.com

2831 N Grandview Blvd, Suite 222
Pewaukee, WI 53072
www.judsonrealestate.com



1 Prior to negotiating on your behalf the Broker must provide you the following disclosure statement:

2 **BROKER DISCLOSURE TO CUSTOMERS**

3 You are a customer of the broker. The broker is either an agent of another party in the transaction or a subagent of another broker
4 who is the agent of another party in the transaction. The broker, or salesperson acting on behalf of the broker, may provide
5 brokerage services to you. Whenever the broker is providing brokerage services to you, the broker owes you, the customer, the
6 following duties:

7 ■ The duty to provide brokerage services to you fairly and honestly.

8 ■ The duty to exercise reasonable skill and care in providing brokerage services to you.

9 ■ The duty to provide you with accurate information about market conditions within a reasonable time if you request it, unless
10 disclosure of the information is prohibited by law.

11 ■ The duty to disclose to you in writing certain material adverse facts about a property, unless disclosure of the information is
12 prohibited by law (See Lines 47-55).

13 ■ The duty to protect your confidentiality. Unless the law requires it, the broker will not disclose your confidential information or the
14 confidential information of other parties (See Lines 22-39).

15 ■ The duty to safeguard trust funds and other property the broker holds.

16 ■ The duty, when negotiating, to present contract proposals in an objective and unbiased manner and disclose the advantages and
17 disadvantages of the proposals.

18 Please review this information carefully. A broker or salesperson can answer your questions about brokerage services, but if you
19 need legal advice, tax advice, or a professional home inspection, contact an attorney, tax advisor, or home inspector.

20 This disclosure is required by section 452.135 of the Wisconsin statutes and is for information only. It is a plain-language summary of
21 a broker's duties to a customer under section 452.133 (1) of the Wisconsin statutes.

22 **CONFIDENTIALITY NOTICE TO CUSTOMERS**

23 **BROKER WILL KEEP CONFIDENTIAL ANY INFORMATION GIVEN TO BROKER IN CONFIDENCE, OR ANY INFORMATION**
24 **OBTAINED BY BROKER THAT HE OR SHE KNOWS A REASONABLE PERSON WOULD WANT TO BE KEPT CONFIDENTIAL,**
25 **UNLESS THE INFORMATION MUST BE DISCLOSED BY LAW OR YOU AUTHORIZE THE BROKER TO DISCLOSE PARTICULAR**
26 **INFORMATION. A BROKER SHALL CONTINUE TO KEEP THE INFORMATION CONFIDENTIAL AFTER BROKER IS NO LONGER**
27 **PROVIDING BROKERAGE SERVICES TO YOU.**

28 **THE FOLLOWING INFORMATION IS REQUIRED TO BE DISCLOSED BY LAW:**

29 1. **MATERIAL ADVERSE FACTS, AS DEFINED IN SECTION 452.01 (5g) OF THE WISCONSIN STATUTES (SEE LINES 47-55),**

30 2. **ANY FACTS KNOWN BY THE BROKER THAT CONTRADICT ANY INFORMATION INCLUDED IN A WRITTEN INSPECTION**
31 **REPORT ON THE PROPERTY OR REAL ESTATE THAT IS THE SUBJECT OF THE TRANSACTION.**

32 **TO ENSURE THAT THE BROKER IS AWARE OF WHAT SPECIFIC INFORMATION YOU CONSIDER CONFIDENTIAL, YOU MAY LIST**
33 **THAT INFORMATION BELOW (SEE LINES 35-36). AT A LATER TIME, YOU MAY ALSO PROVIDE THE BROKER WITH OTHER**
34 **INFORMATION YOU CONSIDER TO BE CONFIDENTIAL.**

35 **CONFIDENTIAL INFORMATION:**

36

37 **NONCONFIDENTIAL INFORMATION (The following information may be disclosed by Broker):**

38

39 **(INSERT INFORMATION YOU AUTHORIZE THE BROKER TO DISCLOSE SUCH AS FINANCIAL QUALIFICATION INFORMATION.)**

40 **CONSENT TO TELEPHONE SOLICITATION**

41 **I/We agree that the Broker and any affiliated settlement service providers (for example, a mortgage company or title company) may**
42 **call our/my home or cell phone numbers regarding issues, goods and services related to the real estate transaction until I/We**
43 **withdraw this consent in writing. List Home/Cell Numbers:**

44 **SEX OFFENDER REGISTRY**

45 **Notice: You may obtain information about the sex offender registry and persons registered with the registry by contacting the**
46 **Wisconsin Department of Corrections on the Internet at: <http://offender.doc.state.wi.us/public/> or by phone at 877-234-0085.**

47 **DEFINITION OF MATERIAL ADVERSE FACTS**

48 **a "material adverse fact" is defined in Wis. Stat. § 452.01 (5g) as an adverse fact that a party indicates is of such significance, or that**
49 **is generally recognized by a competent licensee as being of such significance to a reasonable party, that it affects or would affect**
50 **the party's decision to enter into a contract or agreement concerning a transaction or affects or would affect the party's decision**
51 **about the terms of such a contract or agreement. An "adverse fact" is defined in Wis. Stat. § 452.01 (1e) as a condition or occurrence**
52 **that a competent licensee generally recognizes will significantly and adversely affect the value of the property, significantly reduce**
53 **the structural integrity of improvements to real estate, or present a significant health risk to occupants of the property; or information**
54 **that indicates that a party to a transaction is not able to or does not intend to meet his or her obligations under a contract or**
55 **agreement made concerning the transaction.**

No representation is made as to the legal validity of any provision or the adequacy
of any provision in any specific transaction.

Copyright 2006 by Wisconsin REALTORS[®] Association
Drafted by Attorney Richard J. Staff

Judson & Associates SC
2831 N Grandview Blvd, Suite 222, Pewaukee WI 53072
Phone: (262) 695-8800
Fax: (262) 695-8801