

2 Strategically Located Industrial Properties in Mapunapuna

2840 & 2830 MOKUMOA STREET, HONOLULU, HI 96819



2840 MOKUMOA STREET

2830 MOKUMOA STREET

CAA

IG

INDUSTRIAL
GROUP HAWAII

FOR SALE



JAY K. ELICKER (B) CCIM, SIOR

Partner · Industrial Services · RB-21204
(808) 218-8318
Jelicker@caahawaii.com



DAVID ASAKURA (B), CCIM

Partner · Broker-in-Charge · RB-20869
(808) 282-0503
dasakura@caahawaii.com

2840 MOKUMOA STREET



2830 MOKUMOA STREET



PROPERTY DESCRIPTION

Rare opportunity to purchase two large concrete warehouses conveniently located in Mapunapuna. The warehouses together total over 53K square feet situated on over 80K square feet of land and serviced by three recessed loading docks. The buildings are high cube, the parking lot is concrete paved with direct access to the recessed loading docks. 2840 Mokumoa has about 5K square feet of corporate offices and contains a concrete mezzanine for added storage. 2830 Mokumoa has small office, commercial kitchen with grease trap and about 5K square feet of temperature controlled space.

Conveniently located in Mapunapuna with easy access to free way on ramps in both East and West directions, minutes from the downtown central business district and minutes from the ports and airport.

2840 MOKUMOA STREET (SITE PHOTOS)



PROPERTY DETAILS

Address	2840 Mokumoa Street, Honolulu, HI 96819
---------	--

TMK	1-1-1-7-13
-----	------------

Tenure	Leasehold
--------	-----------

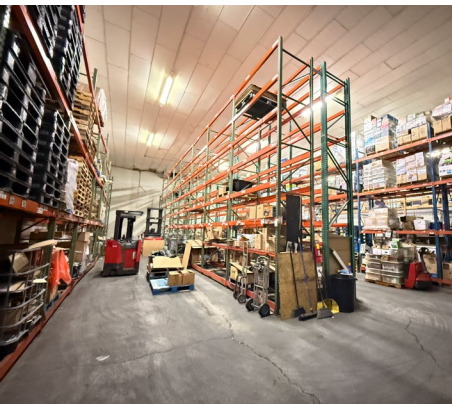
Zoning	I-2 Industrial
--------	----------------

Asking Price	\$800,000 (Leasehold)
--------------	-----------------------

Land Area	39,656 SF
-----------	-----------

Bldg Area	29,490 SF
-----------	-----------

2830 MOKUMOA STREET (SITE PHOTOS)



PROPERTY DETAILS

Address	2830 Mokumoa Street, Honolulu, HI 96819
---------	--

TMK	1-1-1-7-13
-----	------------

Tenure	Leasehold
--------	-----------

Zoning	I-2 Industrial
--------	----------------

Asking Price	\$800,000 (Leasehold)
--------------	-----------------------

Land Area	39,600 SF
-----------	-----------

Bldg Area	24,000 SF
-----------	-----------



JAY K. ELICKER (B) CCIM, SIOR
Partner • Industrial Services • RB-21204
(808) 218-8318
Jellicker@caahawaii.com



DAVID ASAKURA (B), CCIM
Partner • Broker-in-Charge • RB-20869
(808) 282-0503
dasakura@caahawaii.com

CAAHAWAII.COM • 225 QUEEN STREET, SUITE 200 • HONOLULU, HI 96813 • @WHEREHAWAIIWORKS
©2025 Commercial Asset Advisors. All information contained herein is obtained from sources deemed reliable. However, no representations or guarantees are made as to the accuracy thereof, and it is provided herein subject to errors, omissions, changes and withdrawals without notice. Offeror and/or his agent should confirm this information prior to making any offer. Buyer agrees that all negotiation shall be conducted through CAA only. No subagency is offered or intended.



COMMERCIAL ASSET
ADVISORS

