

PINEWOOD PLAZA

📍 3860 Tampa Road | Oldsmar, FL 34677

RETAIL SPACE AVAILABLE
FOR LEASE



- **AVAILABLE:** 3,500 SF
- Features Two Points of Ingress and Egress, Abundant Parking, and Pylon Signage available with high visibility
- Located at a signalized intersection across from Walmart, in a heavy traffic location on Tampa Road
- Located just 0.5 Miles from SR-580, a major thoroughfare linking Clearwater and Tampa

VR TOUR

AREA RETAILERS:



AREA POPULATION

	3 Mile	47,908
	5 Mile	161,845
	10 Minute	97,119

AVG. HOUSEHOLD INCOME

	3 Mile	\$132,223
	5 Mile	\$131,752
	10 Minute	\$130,911

DAILY TRAFFIC COUNTS AADT

	Tampa Road	56,000
	SR-580	35,500
	Forest Lake Blvd	18,500

FranklinStreet
LICENSED REAL ESTATE BROKER | FranklinSt.com

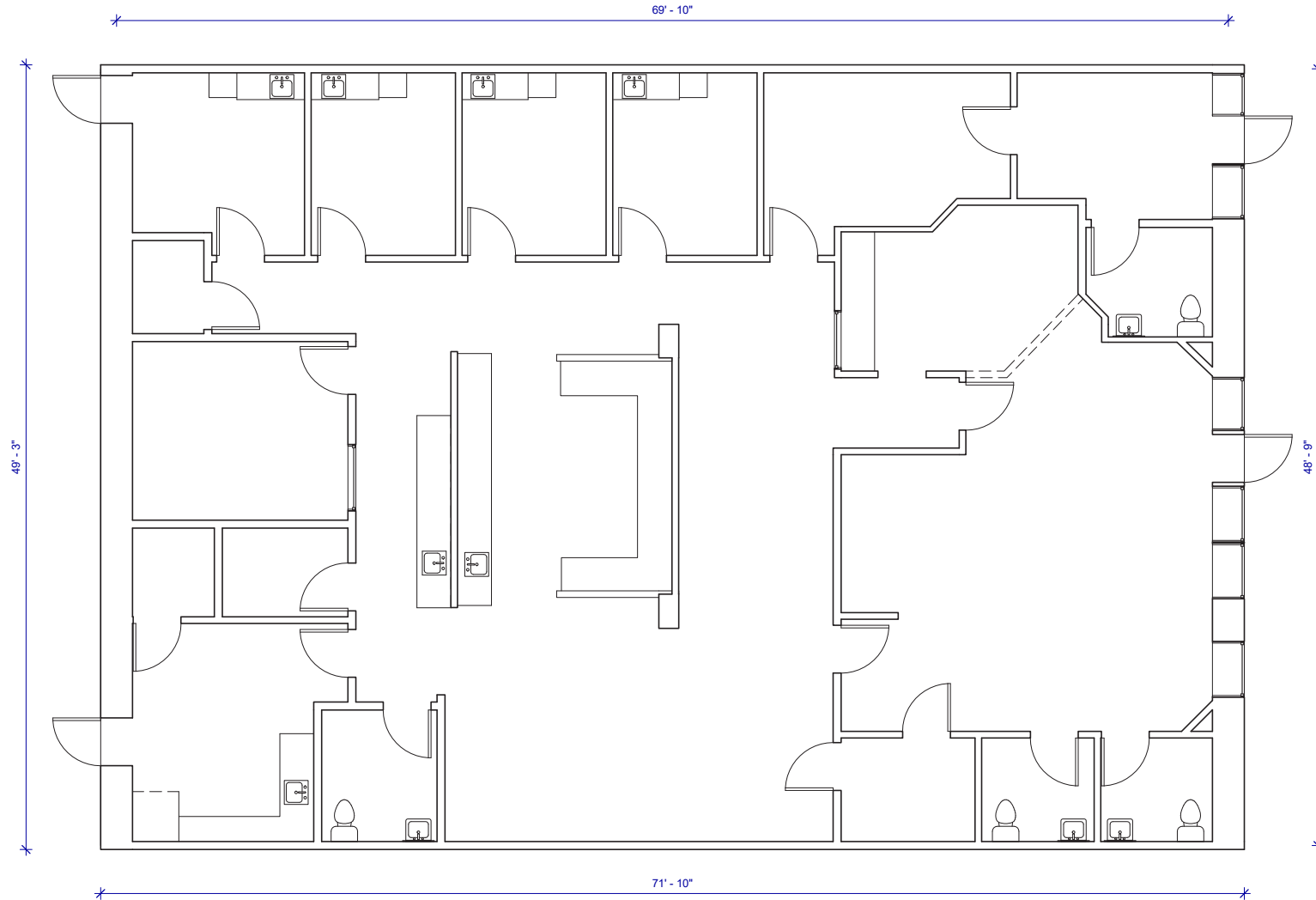
ALEX WRIGHT
SENIOR DIRECTOR
📞 813.682.6135
✉ Alex.Wright@FranklinSt.com

BROWNYN EYEINGTON
SENIOR ASSOCIATE
📞 813.577.3830
✉ Bronwyn.Eyeington@FranklinSt.com

MAX MCGEACHY
SENIOR ASSOCIATE
📞 813.345.5873
✉ Max.McGeachy@FranklinSt.com



SITE PLAN



① Level 1
1/4" = 1'-0"

FLOOR PLAN

