

# FOR LEASE – PROFESSIONAL OFFICE SPACE

403 WESTPARK CT | PEACHTREE CITY, GEORGIA

SECOND FLOOR SUITE AVAILABLE



## AVAILABLE:

*2nd Floor  
Suite 210– 2,409 RSF*



## STRATEGIC LOCATION

- Proactive community, Chamber of Commerce and Development Authority
- Located only 35 miles southwest of Atlanta
- Located only 25 miles southwest of Hartfield International Airport.
- Strong and highly educated workforce
- Draw Area Total Employment – 753,760 people
- Peachtree City's strong business environment includes companies such as NCR, TDK, Cooper Lighting, SANY, Panasonic, Avery Denison...
- Located within Westpark Corporate Park with easy access to hotels, restaurants and retail.

**EdifyCRE**  
COMMERCIAL REAL ESTATE

**FOR LEASE – PROFESSIONAL OFFICE SPACE  
403 WESTPARK CT | PEACHTREE CITY, GEORGIA**



**BUILDING SPECIFICATIONS**

|                   |   |
|-------------------|---|
| <b>Address</b>    | 403 Westpark, Ct,<br>Peachtree City, GA 30269 |
| <b>County</b>     | Fayette                                       |
| <b>GLA</b>        | 41,837 sq ft                                  |
| <b>Available</b>  | 2nd Floor<br>Suite 206– 5,440 RSF             |
| <b>Elevator</b>   | 1 Located in main lobby                       |
| <b>Sprinkler</b>  | Full Building                                 |
| <b>Year Built</b> | 1999  |
| <b>Land Area</b>  | 2.98 acres                                    |
| <b>Parking</b>    | 3.2 spaces/1,000 sq ft                        |
| <b>Stories</b>    | 2   |

**TRANSPORTATION**

|                           |  |
|---------------------------|--|
| <b>Highways</b>           | Hwy 74 – 0.2 Miles<br>Hwy 54 – 0.1 Miles<br>I-85 – 9 Miles |
| <b>Local Airport</b>      | Falcon Field – 4 Miles                                     |
| <b>Commercial Airport</b> | Hartsfield-Jackson<br>Atlanta – 25 Miles                   |

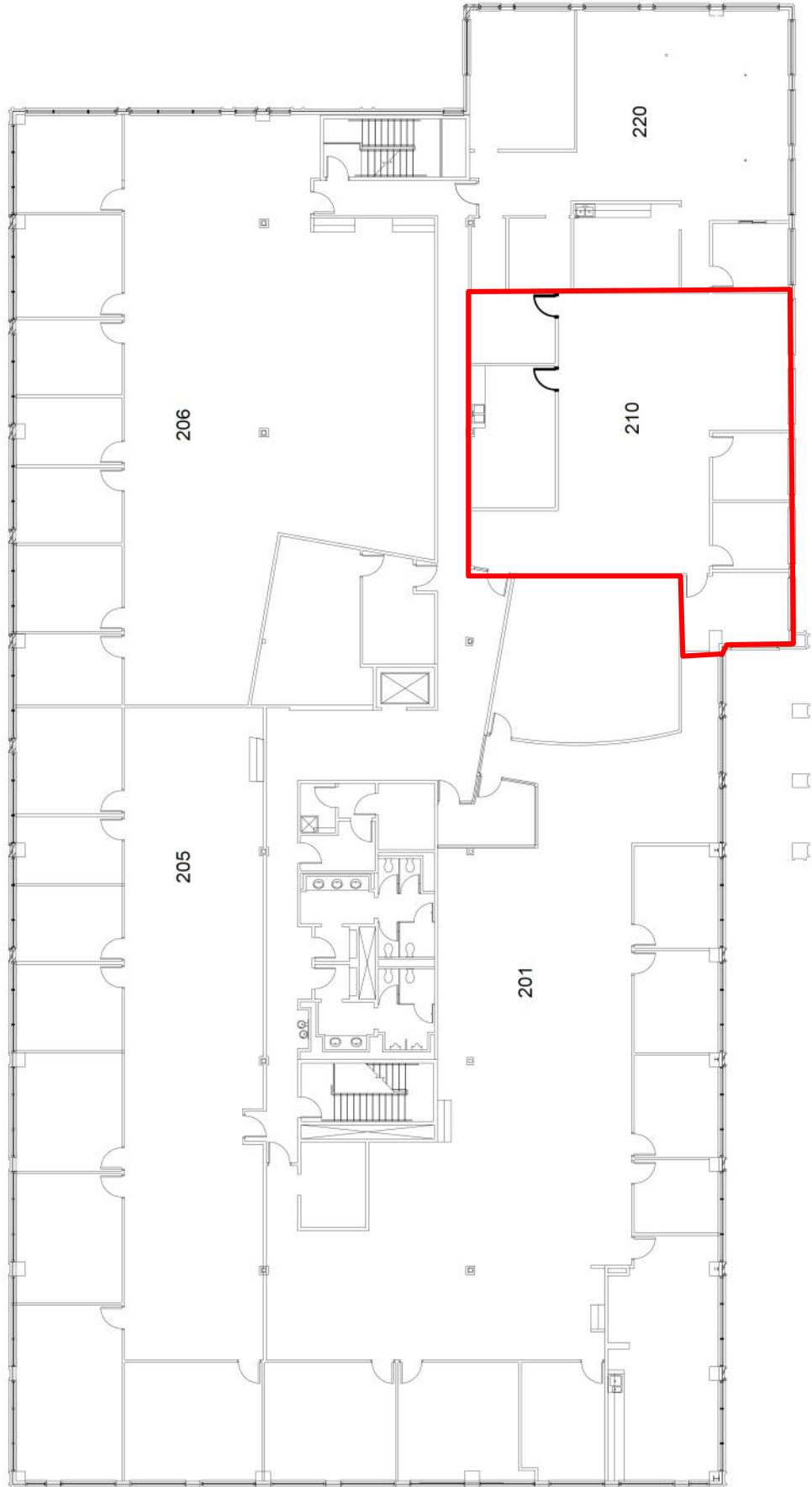


**FOR LEASE – PROFESSIONAL OFFICE SPACE  
403 WESTPARK CT | PEACHTREE CITY, GEORGIA**

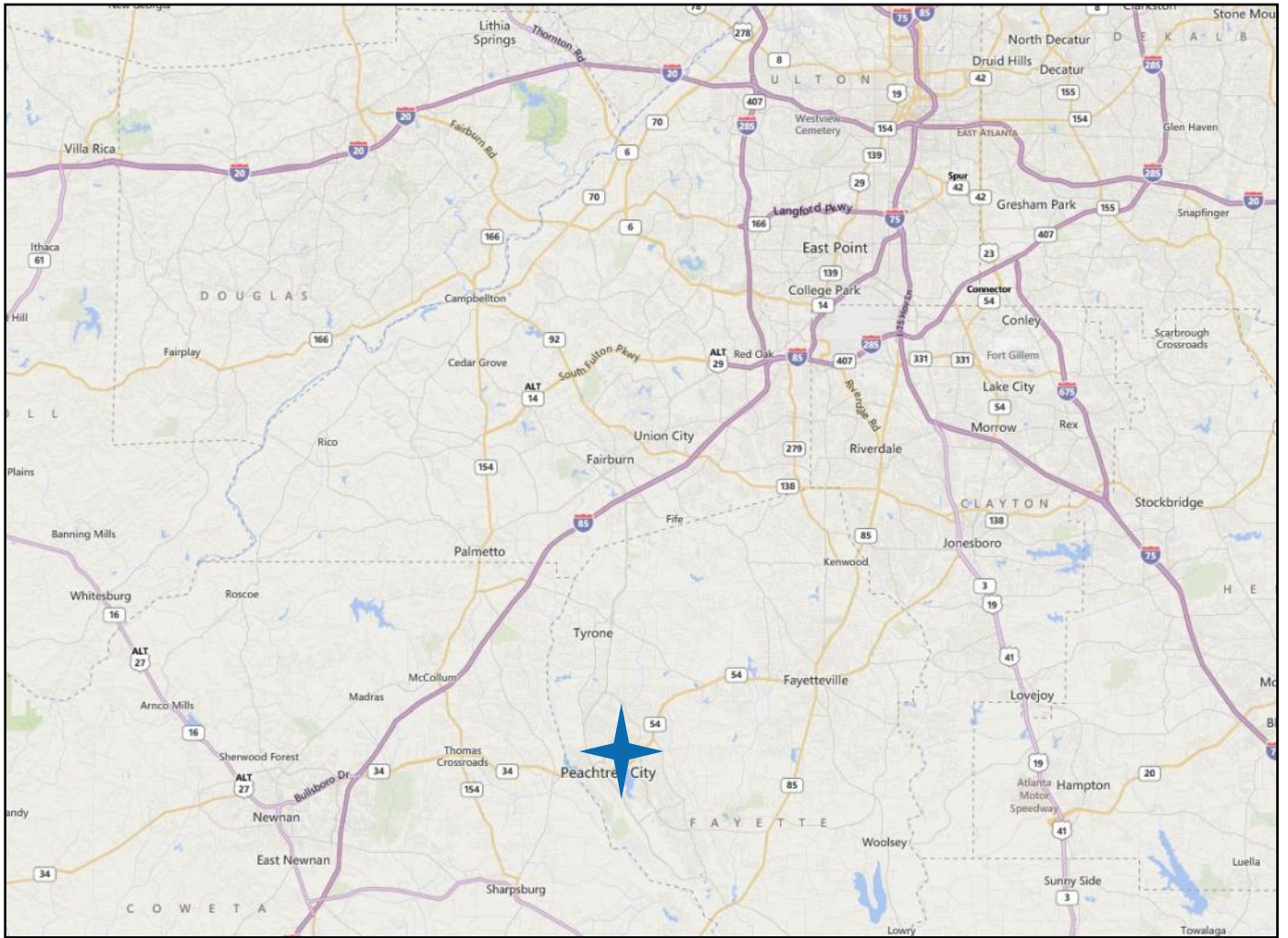


**FOR LEASE – PROFESSIONAL OFFICE SPACE**  
**403 WESTPARK CT | PEACHTREE CITY, GEORGIA**  
**2nd Floor**

**Suite 210**  
**AVAILABLE 2,409 RSF**



# FOR LEASE – PROFESSIONAL OFFICE SPACE 403 WESTPARK CT | PEACHTREE CITY, GEORGIA



For more information, contact:

**Brad Jubin**  
**678-481-5676**  
**Brad@EdifyCRE.com**

**Edify CRE, LLC**  
**309 Roundstone Rock**  
**Tyrone, GA 30290**

