

FOR LEASE

# INGLEWOOD PLACE

*±97,643 SF Class “A” Premium Office  
Building | Full Floor Plate at ±33,969 SF  
or ±11,655 SF Office Suite*

5960 INGLEWOOD DRIVE, PLEASANTON CA

**km** Kidder  
Mathews

# INGLEWOOD PLACE



PARAPET BUILDING  
SIGNAGE AVAILABLE  
FOR FULL FLOOR  
TENANT



BUILDING & STREET  
MONUMENT  
SIGNAGE AVAILABLE



INTERIOR ±9,000 SF  
LANDSCAPE ATRIUM  
WITH WATER FEATURE



BALCONY  
ACCESS FOR 3RD  
FLOOR TENANTS



PARKING RATIO  
OF 4/1000



NUMEROUS  
SHOPPING &  
RESTAURANTS  
NEARBY



WALKING DISTANCE  
TO BART



AMPLE  
HOUSING  
NEARBY



*Ingleswood Place is within walking  
distance to numerous amenities*

INGLEWOOD PLACE



AVAILABLE FOR LEASE

KIDDER MATHEWS

# INGLEWOOD PLACE



# AVAILABLE SUITES

## FIRST FLOOR

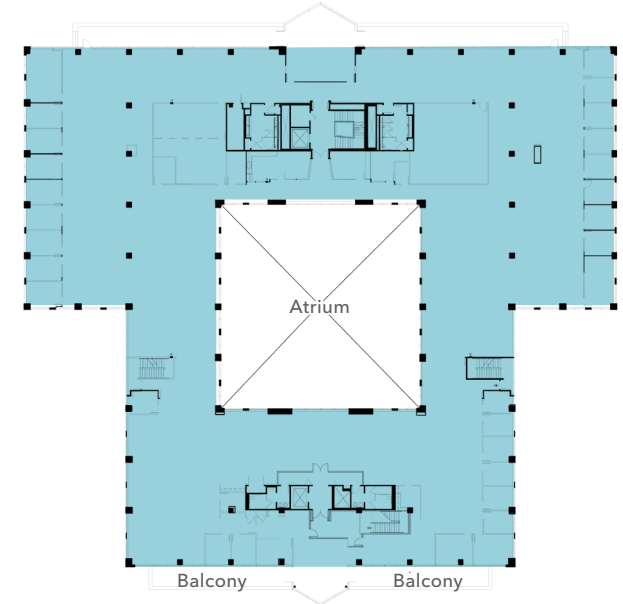
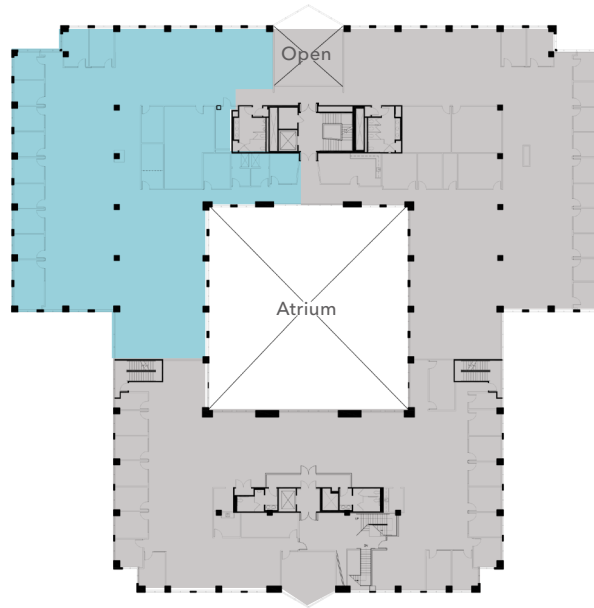
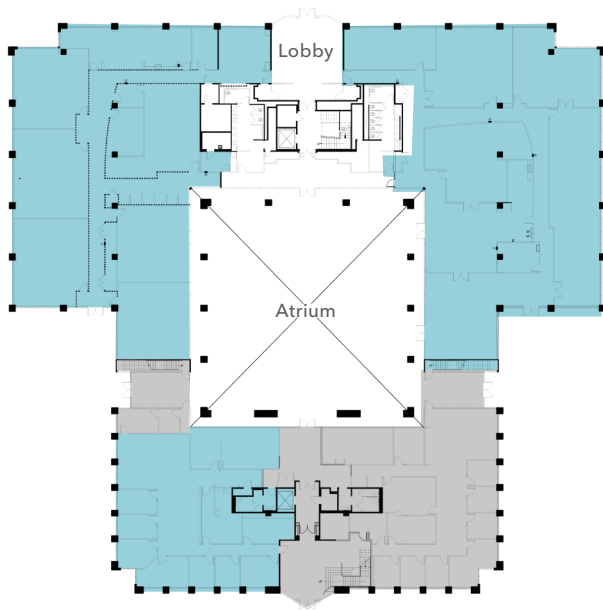
Suite 100 | ±10,515 RSF  
Suite 115 | ±4,441 RSF  
Suite 150 | ±10,290 RSF

## SECOND FLOOR

Suite 202  
±11,655 RSF

## THIRD FLOOR\*

Suite 300  
±33,969 RSF

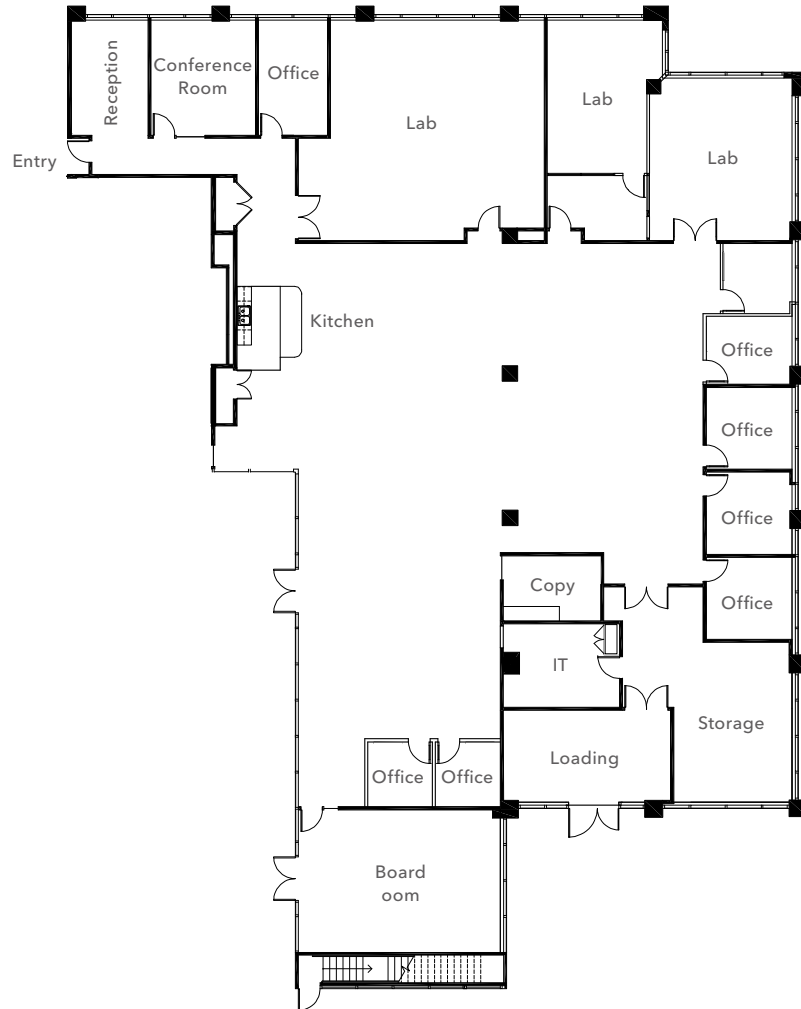


\*Floor plan not to scale

■ Available  
■ Leased

# SUITE 100

R&D Office/Lab Suite



*±10,515 SF*

AVAILABLE

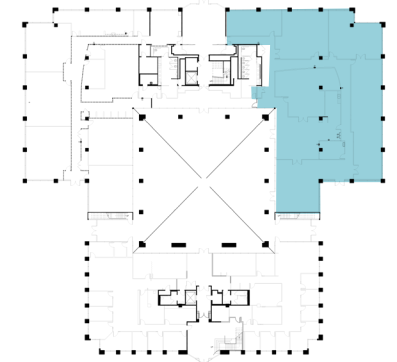
*\$2.75*

PSF, INDUSTRIAL GROSS

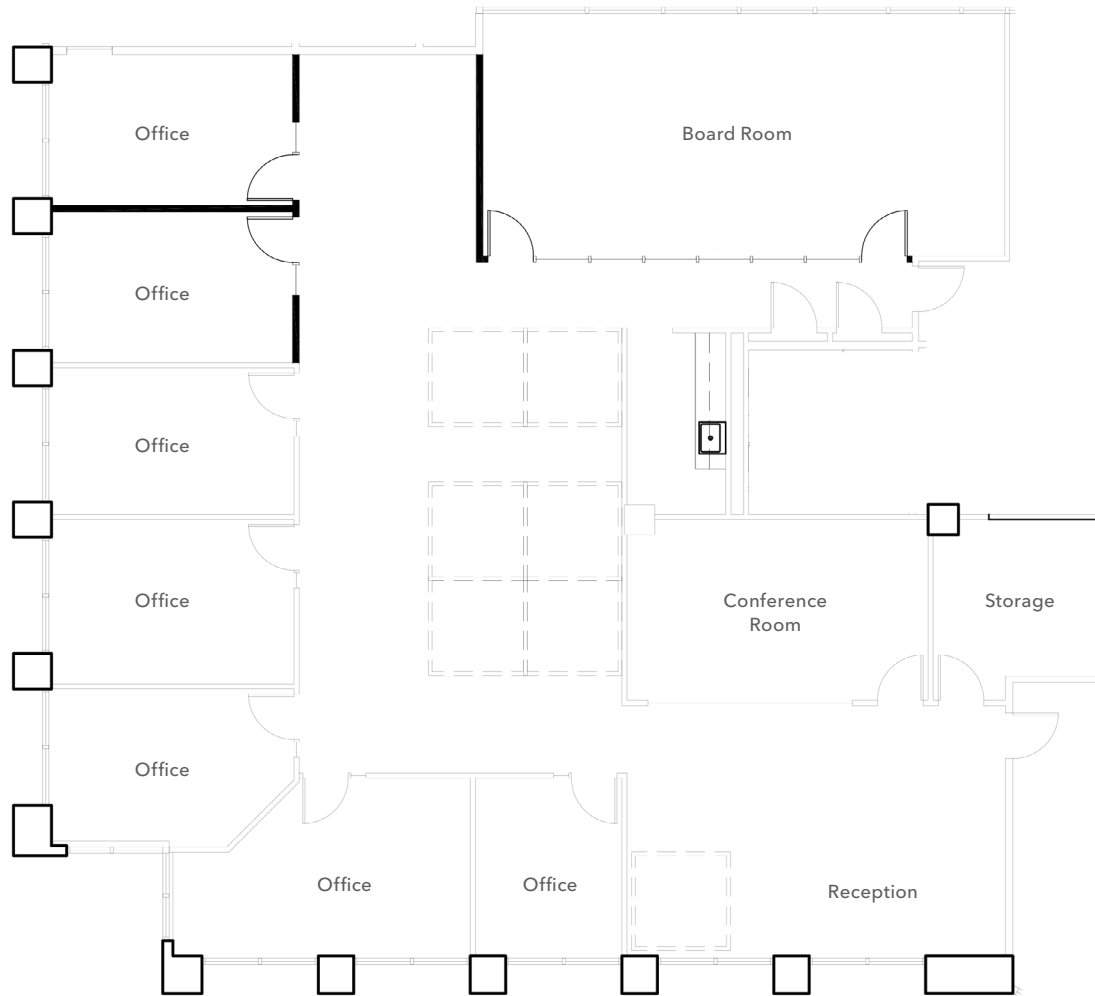
*60 DAYS*

AVAILABLE - SUBJECT TO  
TERMINATION OF EXISTING LEASE

FIRST FLOOR



# SUITE 115



*+4,441 SF*

AVAILABLE

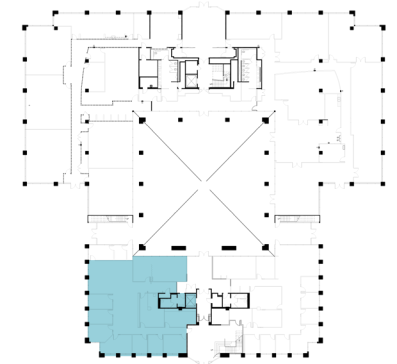
*\$2.49*

PSF, FULL SERVICE

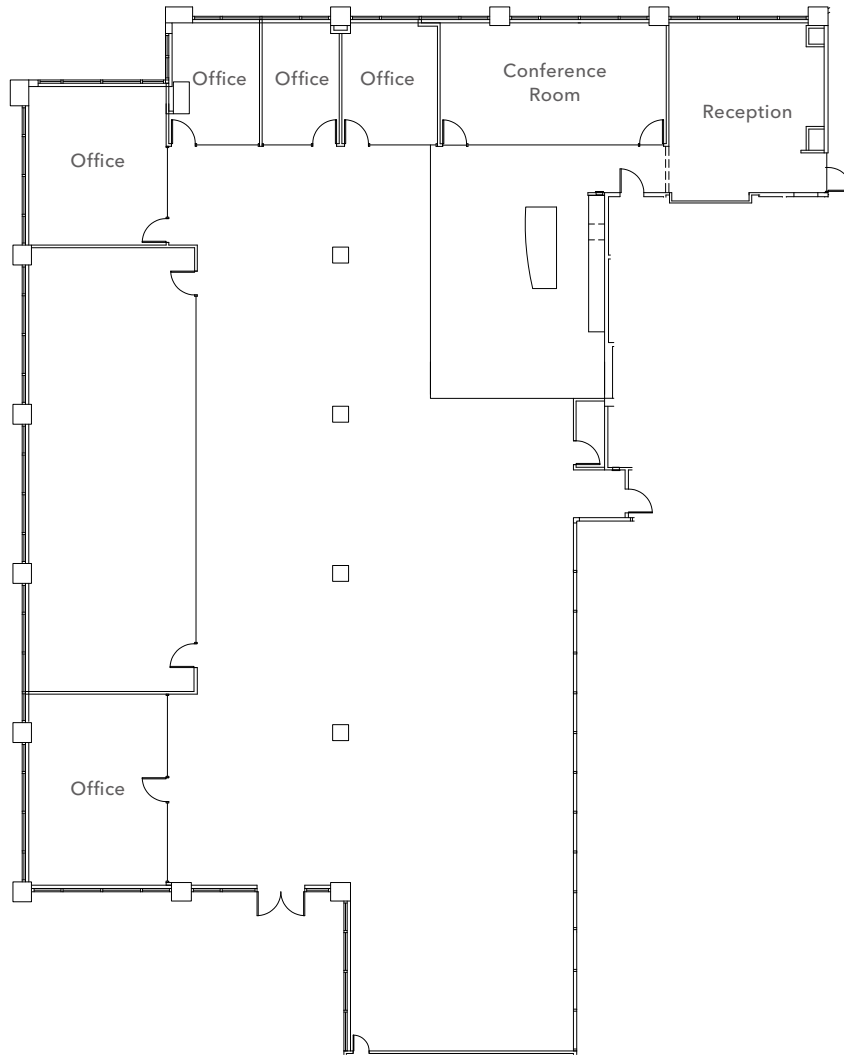
*NOW*

AVAILABLE

FIRST FLOOR



# SUITE 150



*+10,290 SF*

AVAILABLE

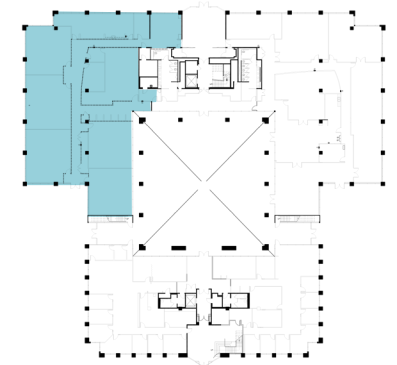
*\$2.49*

PSF, FULL SERVICE

*NOW*

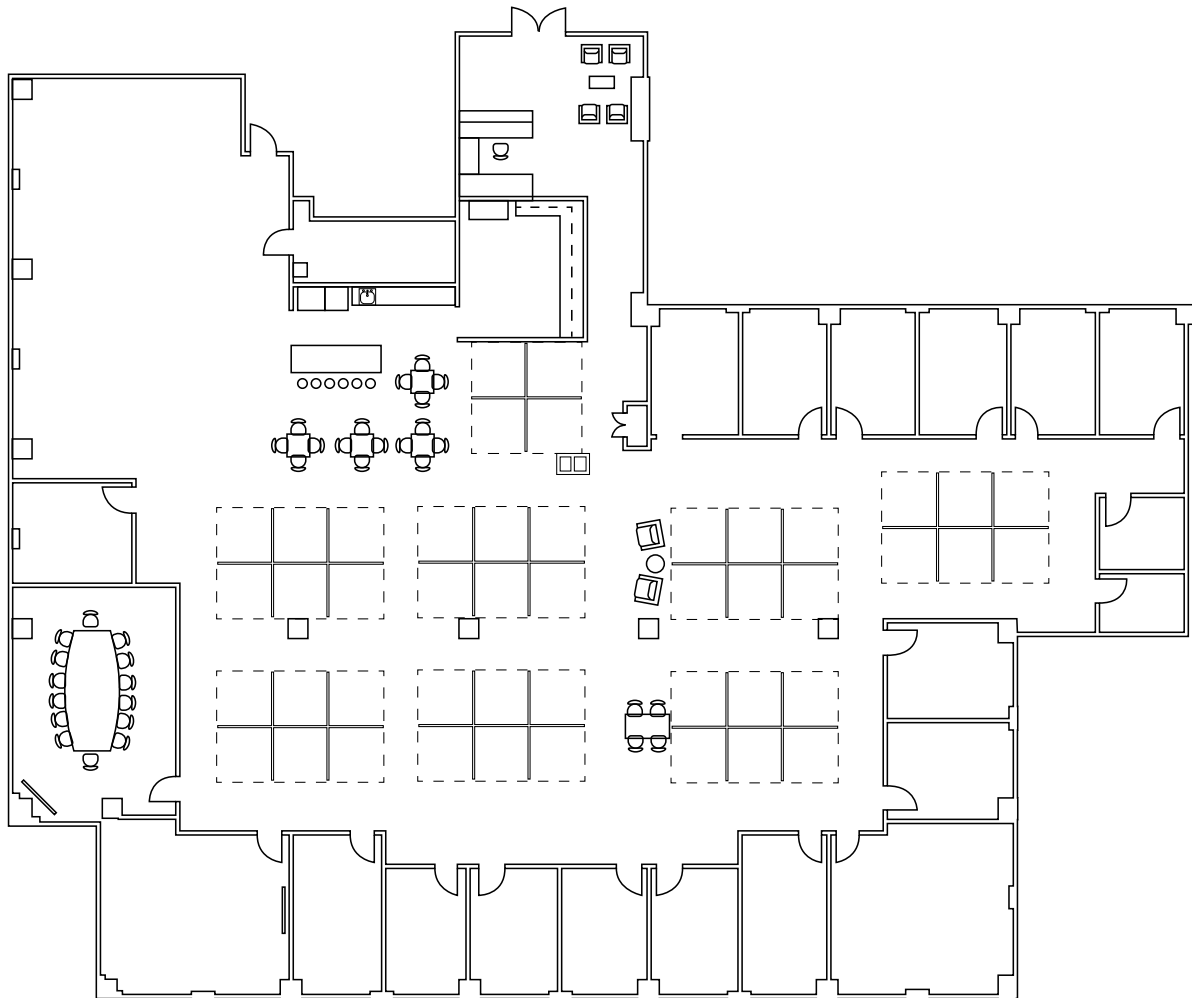
AVAILABLE

FIRST FLOOR





# SUITE 202



*+11,655 SF*

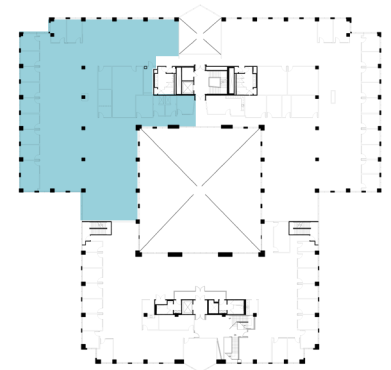
AVAILABLE

*NOW*

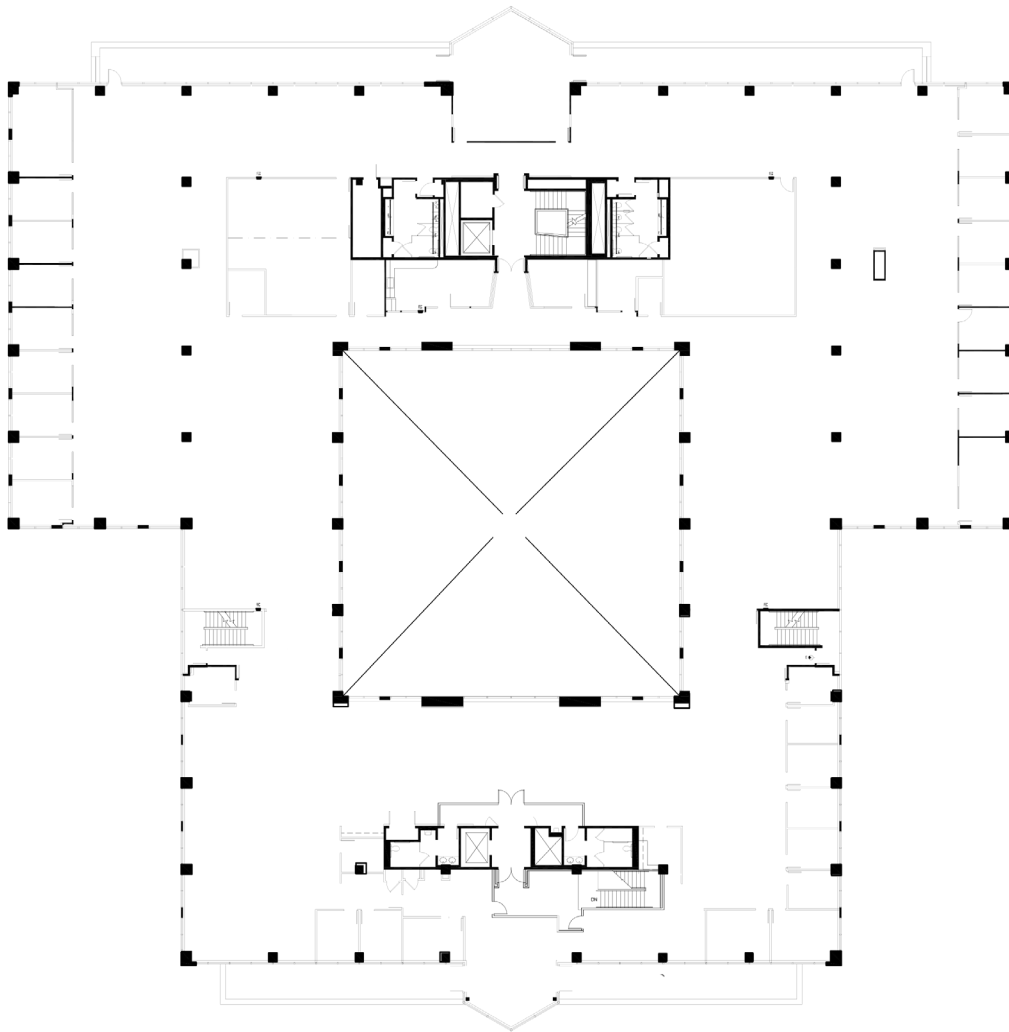
AVAILABLE



SECOND FLOOR



# SUITE 300



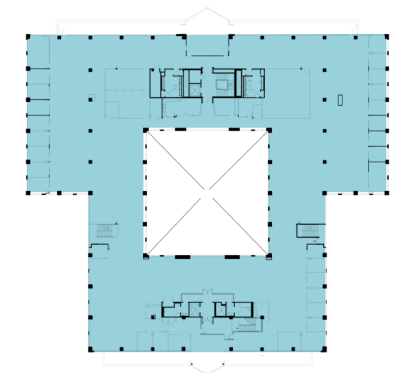
*±33,969 SF*

AVAILABLE

*NOW*

AVAILABLE

THIRD FLOOR



\*Floor plan not to scale

# INGLEWOOD PLACE

*Exclusively leased by*

**JASON CHANDLER**

925.905.1103

[jason.chandler@kidder.com](mailto:jason.chandler@kidder.com)

LIC N° 01394441

**IAN THOMAS**

925.905.1105

[ian.thomas@kidder.com](mailto:ian.thomas@kidder.com)

LIC N° 1279455

[KIDDER.COM](http://KIDDER.COM)

This information supplied herein is from sources we deem reliable. It is provided without any representation, warranty, or guarantee, expressed or implied as to its accuracy. Prospective Buyer or Tenant should conduct an independent investigation and verification of all matters deemed to be material, including, but not limited to, statements of income and expenses. Consult your attorney, accountant, or other professional advisor.

**km** Kidder  
Mathews