



Each office independently owned and operated

RE/MAX ADVANTAGE PLUS

1251 Town Centre Drive
Eagan, MN 55123
REMAXCOMMERCIAL.COM

FOR SALE/LEASE

INDUSTRIAL PROPERTY

1920 WI-35

SOMERSET, WI 54025

PRESENTED BY:

TIM LITTLE

Chief Commercial Broker
952.432.4900
tctimlittle@gmail.com

JIM STARR

Sr. Associate
612.247.5898
jjstarr41@gmail.com

JEREMY FELDMANN

Associate Broker
406.314.3333
jeremyfeldmann@gmail.com

LUIS OLVERA

Associate
612.803.0142
luisolvera@comcast.net



EXECUTIVE SUMMARY



OFFERING SUMMARY

Sale Price:	\$1,750,000
Lease Rate:	\$8750 per month (NNN)
Building Size:	13,000 SF
Lot Size:	5.98 Acres
Price / SF:	\$134.62
Year Built:	1954

PROPERTY OVERVIEW

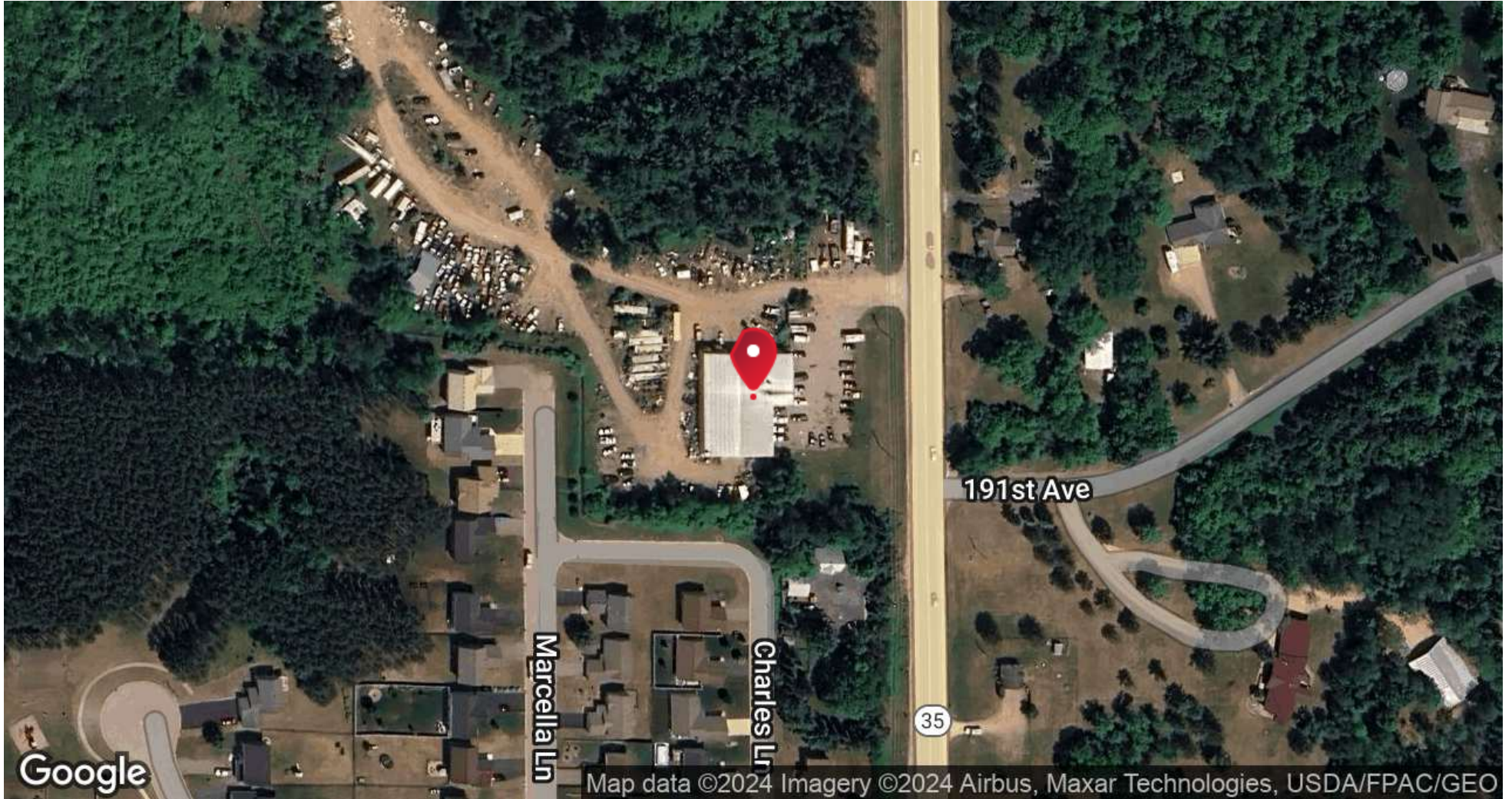
Located just north of Somerset WI, this Auto Salvage Yard and Auto Repair Center Business are being sold. Sale includes a 13,000 Sq Ft Building, and approximately 5.98 Acres of Land, the Equipment to operate the Business, with the Inventory to be settled at closing. The land use is regulated under a Conditional Use Permit (CUP) approved by St. Croix County, WI.

INDUSTRIAL PROPERTY
FOR SALE/LEASE

RE/MAX ADVANTAGE PLUS

Each office independently owned and operated

LOCATION MAP



INDUSTRIAL PROPERTY
FOR SALE/LEASE

RE/MAX ADVANTAGE PLUS
Each office independently owned and operated

ADDITIONAL PHOTOS



INDUSTRIAL PROPERTY
FOR SALE/LEASE

RE/MAX ADVANTAGE PLUS
Each office independently owned and operated

1251 Town Centre Drive
Eagan, MN 55123

REMAXCOMMERCIAL.COM

MEET THE TEAM



TIM LITTLE

Chief Commercial Broker

C: 952.432.4900
tctimlittle@gmail.com



JIM STARR

Sr. Associate

C: 612.247.5898
jjstarr41@gmail.com



JEREMY FELDMANN

Associate Broker

C: 406.314.3333
jeremyfeldmann@gmail.com



LUIS OLVERA

Associate

C: 612.803.0142
luis1olvera@comcast.net

INDUSTRIAL PROPERTY
FOR SALE/LEASE

RE/MAX ADVANTAGE PLUS
Each office independently owned and operated

1251 Town Centre Drive
Eagan, MN 55123

REMAXCOMMERCIAL.COM