

AVISON  
YOUNG

# Automotive Dealership

**OPPORTUNITY FOR SUBLEASE**

7015 KNOTT AVENUE | BUENA PARK | CA

**JODI V. MEADE, CRX, CSM**

213.471.1060

[jodi.meade@avisonyoung.com](mailto:jodi.meade@avisonyoung.com)

DRE License 01126082



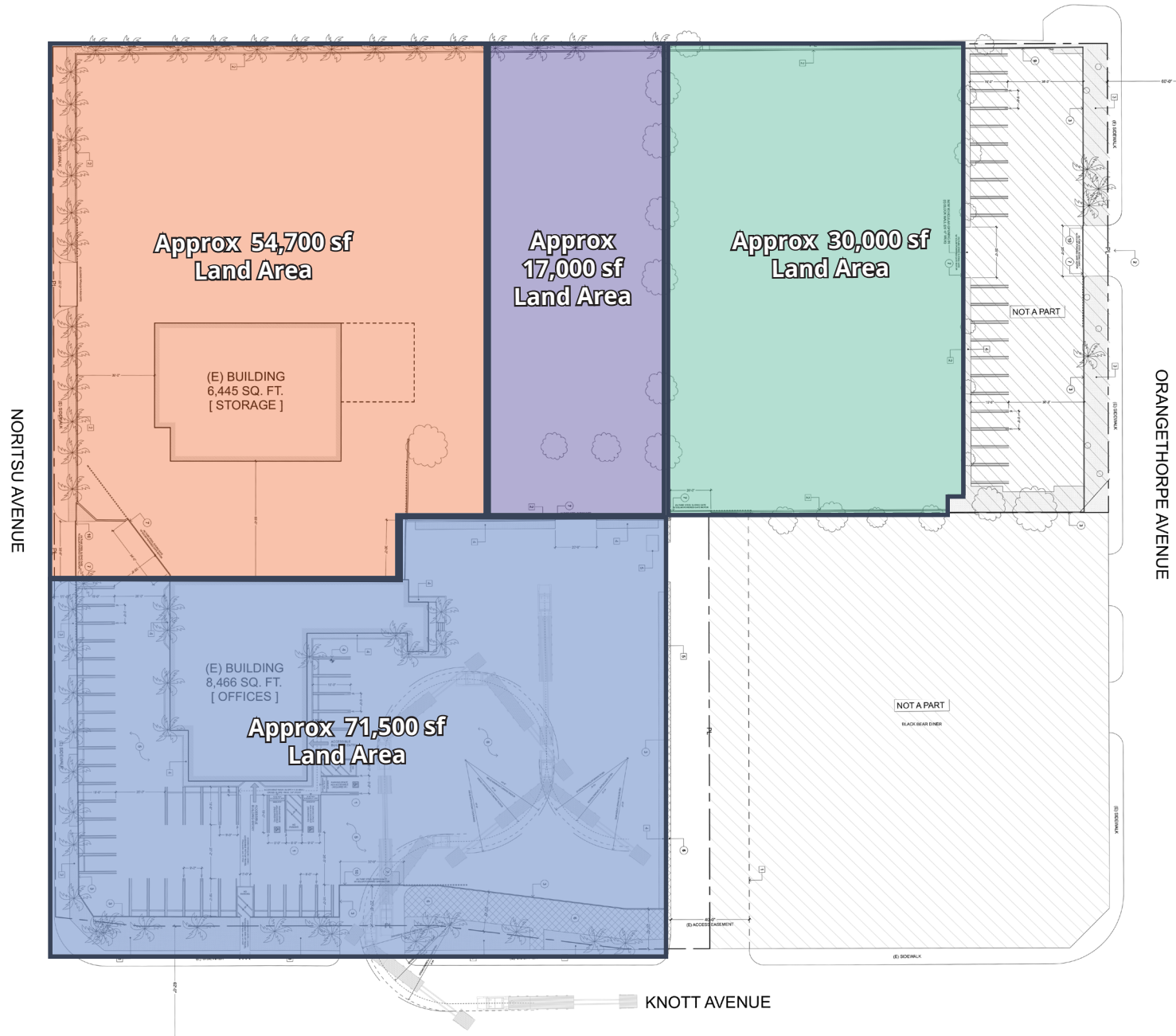
7015 KNOTT AVENUE  
BUENA PARK, CA

Avison Young Automotive Properties Group is pleased to present an opportunity to acquire multiple, single story, buildings totaling 14,911 square feet situated on a 4.4 acre parcel of land in the city of Buena Park, CA. The subject property sits at the signalized corner of Knott Ave. and Noritsu Ave. This highly visible dealership and excess land for inventory storage is immediately adjacent to other highly recognized retailers and industrial users.

With over 464,000 vehicles per day passing by on the 91 Fwy, this site is ideal for auto sales, service and inventory storage. The property can be subleased in whole or in part.

The property serves nearly 637,362 people within a 5-mile radius with an average household income of over \$107,033.

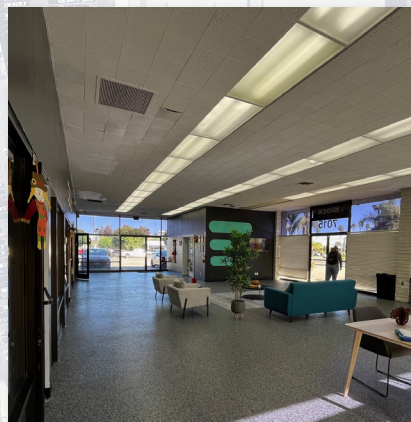
For more information, please contact  
Avison Young's Automotive Properties  
Group to answer any questions or  
schedule a site tour.





# 7015 KNOTT AVENUE

BUENA PARK, CA



## PROPERTY HIGHLIGHTS

**Lease:** **Negotiable**  
Smaller portions of the property can be leased separately.

**Land AC:** **4.418**

**APN:** **7034-017-029**

**Total Building Area:** **14,911 SF**  
8,466 sf - Showroom Building  
6,445 sf - Service Bay Building

**Commercial Zoning:** **ACSP**

**Sublease Term Expiration:** **May 31, 2028**

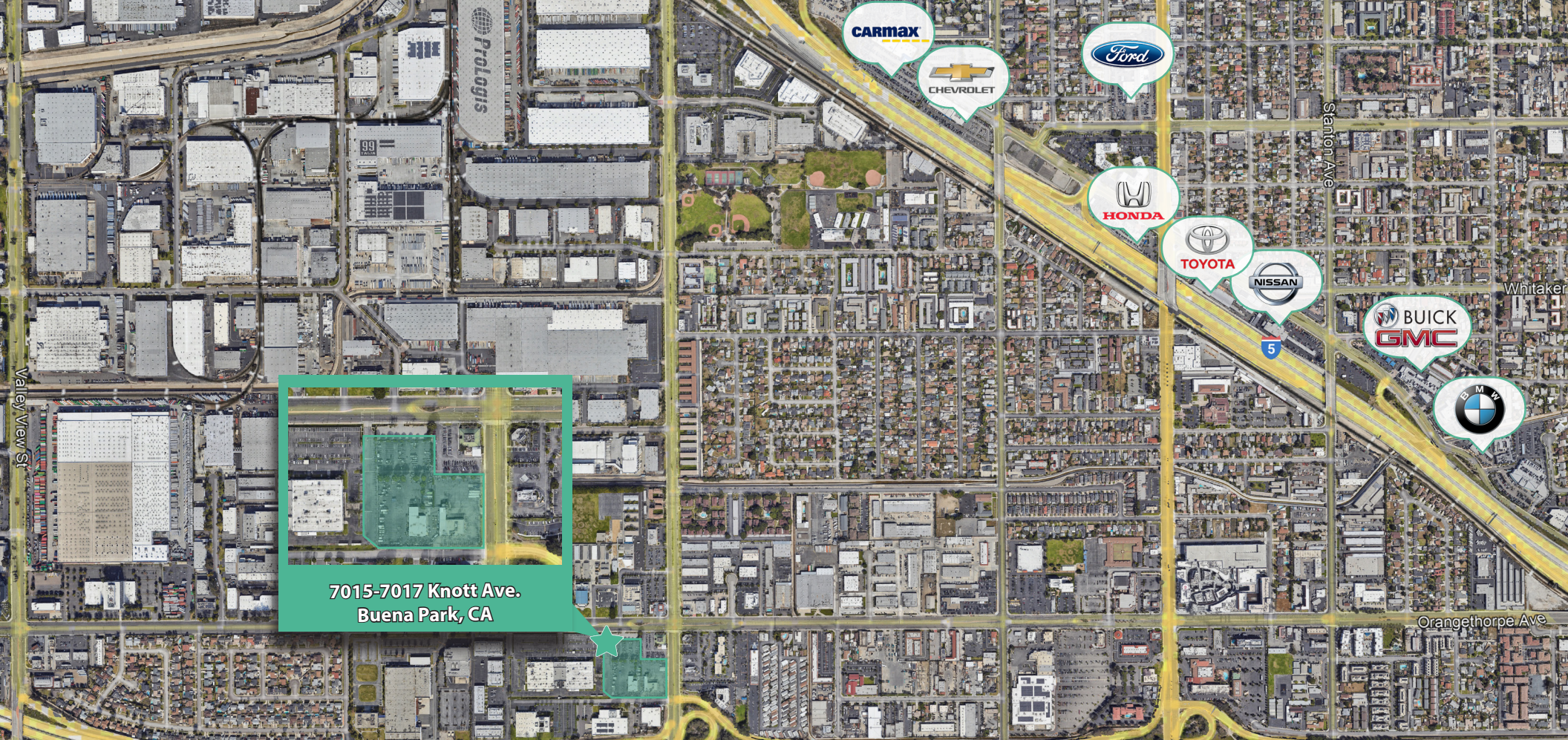
## DEMOGRAPHICS

	3 Mile	5 Miles
<b>Estimated Population:</b>	<b>223,452</b>	<b>637,362</b>
<b>Average Household Income:</b>	<b>\$106,516</b>	<b>\$107,033</b>

## TRAFFIC COUNT

<b>Knott Ave &amp; Orangethrope</b>	<b>28,132</b> Vehicles Per Day
<b>91 Fwy &amp; Iroquois Dr SW</b>	<b>271,227</b> Vehicles Per Day





7015-7017 Knott Ave.  
Buena Park, CA

Avison Young's Automotive Properties Group (APG) is a fully dedicated service line within Avison Young, Inc. that specializes in the automotive real estate needs of investors, developers, manufacturers, and franchisees. Headquartered in Los Angeles, California, APG provides automotive specific expert knowledge in marketing, research, investments, leasing, management, and valuation. APG consistently utilizes the global network and local marketing knowledge of Avison Young's dedicated real estate professionals to ensure our clients make informed, effective real estate decisions.

**JODI V. MEADE, CRX, CSM**  
213.471.1060  
jodi.meade@avisonyoung.com  
DRE License 01126082

**Avison Young** | 601 South Figueroa Street, Suite 4450 | Los Angeles, CA 90017

**AVISON  
YOUNG**

© 2023, Avison Young. Information contained herein was obtained from sources deemed reliable and, while thought to be correct, have not been verified. Avison Young does not guarantee the accuracy or completeness of the information presented, nor assumes any responsibility or liability for any errors or omissions therein.