

sweeney

REAL ESTATE & APPRAISAL

INDUSTRIAL FOR SALE

23 FRANK MOSSBERG DRIVE ATTLEBORO - MASSACHUSETTS



One Turks Head Place, Suite 850 • Providence, Rhode Island 02903
T: 401.331.9300 • F: 401.331.9306 • www.sreari.com



THOMAS O. SWEENEY, SIOR | TSWEENEY@SREARI.COM | 401-331-9300 | 401-523-5101

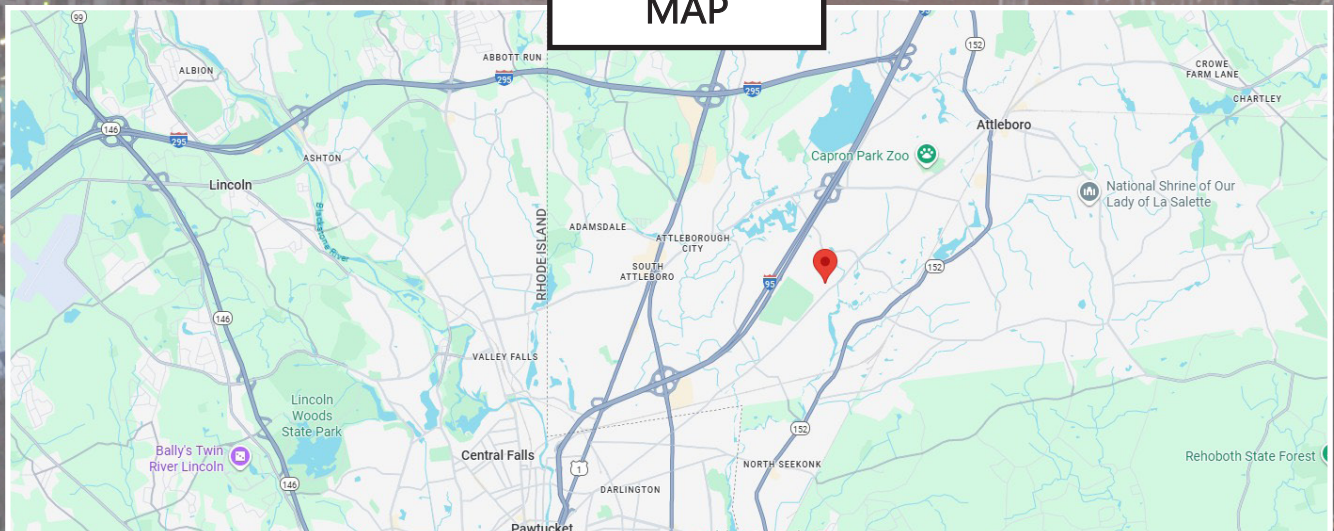
23 FRANK MOSSBERG DRIVE ATTLEBORO - MASSACHUSETTS

**Asking Price: \$3,600,000
(Plat 147, Lot 6)**

PROPERTY DETAILS

- Multi-Tenanted Industrial Investment NNN Leased
- Single Story Flex Building
- 40,000± SF Building
- 25,600 SF of Owner Occupied Space Potentially Available
- 2.8± Acres of Land
- Attleboro Industrial Park
- Six (6) Loading Docks
- One (1) Drive in Door
- Built 1960
- Zoned Industrial (I)
- Quick to I-95

MAP



THOMAS O. SWEENEY, SIOR | TSWEENEY@SREARI.COM | 401-331-9300 | 401-523-5101

All information furnished regarding property for sale, rental or financing is from sources deemed reliable. But no warranty or representation is made as to the accuracy thereof and same is submitted subject to errors, omissions, change or price, rental or other conditions, prior sale lease or financing or withdrawal without notice.

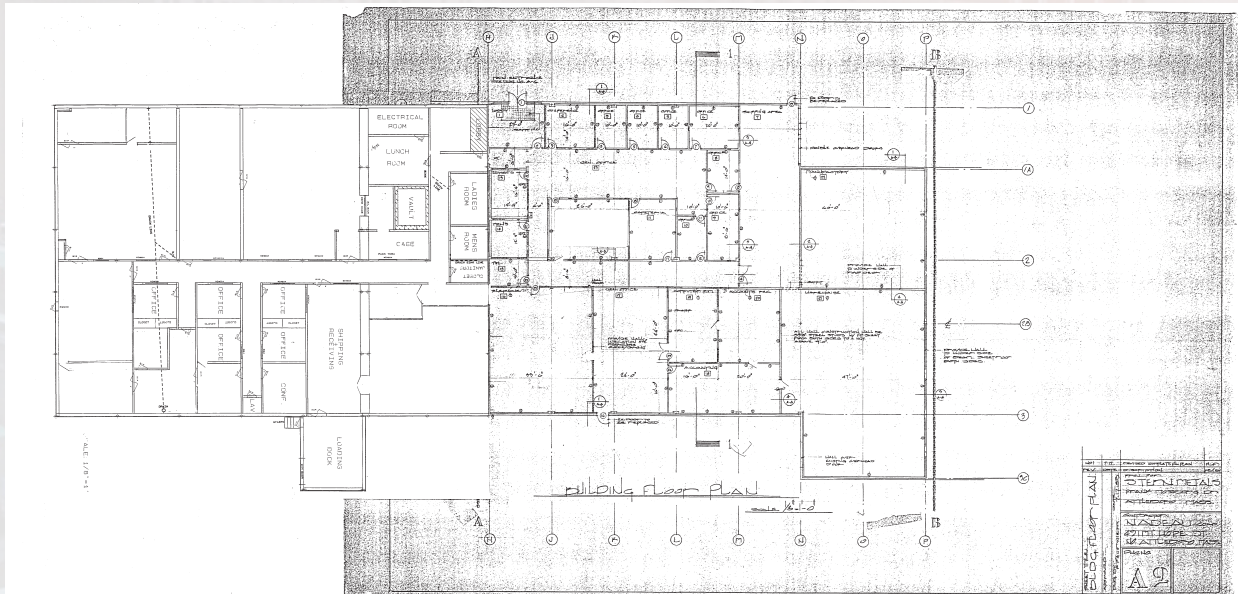
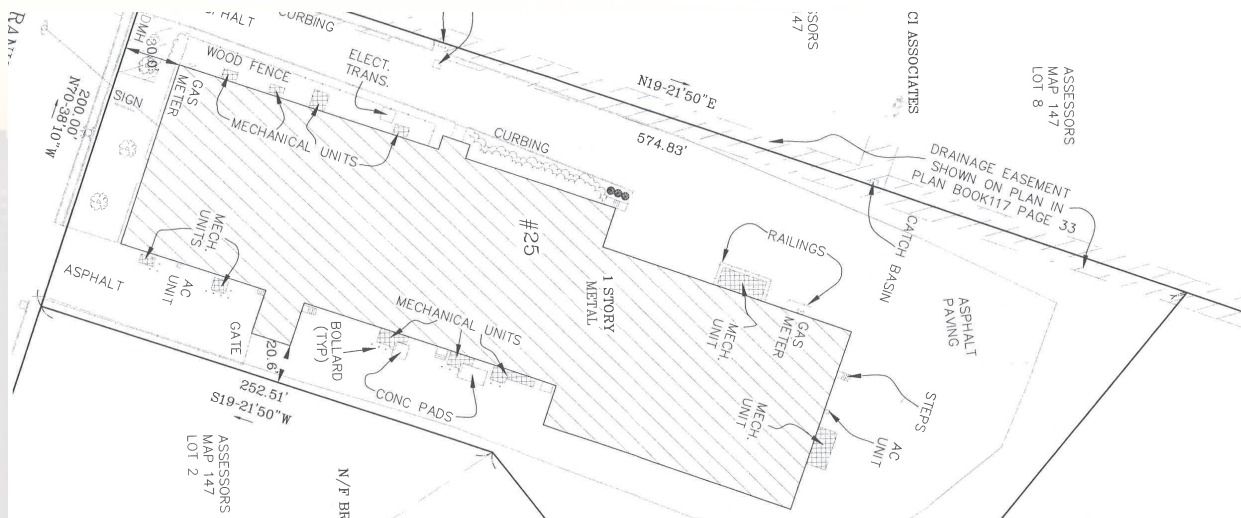
sweeney

REAL ESTATE & APPRAISAL

INDUSTRIAL FOR SALE

23 FRANK MOSSBERG DRIVE ATTLEBORO - MASSACHUSETTS

SITE & FLOOR PLANS



One Turks Head Place, Suite 850 • Providence, Rhode Island 02903
T: 401.331.9300 • F: 401.331.9306 • www.sreari.com



THOMAS O. SWEENEY, SIOR | TSWEENEY@SREARI.COM | 401-331-9300 | 401-523-5101

23 FRANK MOSSBERG DRIVE ATTLEBORO - MASSACHUSETTS

ADDITIONAL PHOTOS

