

# Post Production Creative Office Space for Sublease at The Link

2901 W Alameda Avenue  
Burbank, CA 91505  
3<sup>rd</sup> Floor



---

**AVAILABLE** ± 7,000 - 17,917 RSF

---

**RATE** \$3.25/PSF, FSG

---

**TERM** Up to 5 Years

#### Features:

- Private Offices
- Open Work Area
- Large Conference Room
- Master QC Tech Rooms
- Audio Engineer Rooms
- Compression Mastering
- Ingest Vault Office
- Machine RM + Vault Storage
- QC Atmos Room
- Open to Subleasing a Portion or Full Floor
- Located in the “Media District” of Burbank
- Great Accessibility to 134, 101, and 5 Fwys

**Craig Miller**  
310.202.9008 x 101  
[craig@wilshireag.com](mailto:craig@wilshireag.com)  
DRE# 01006713

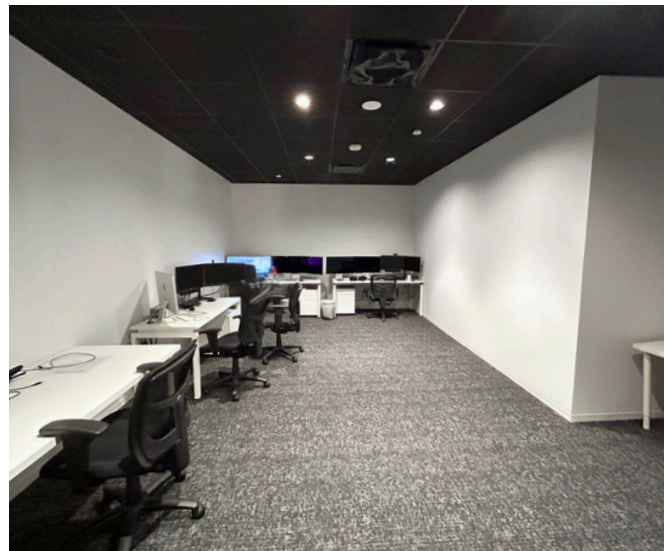
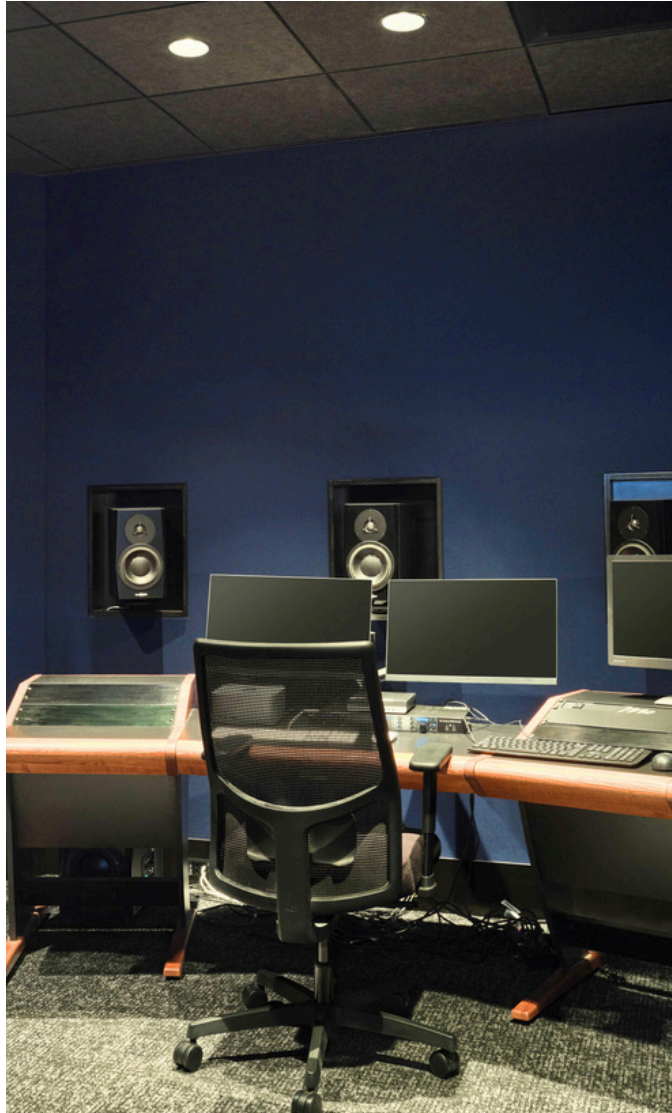


**Cassandra Miller**  
310.202.9008 x 115  
[cassandra@wilshireag.com](mailto:cassandra@wilshireag.com)  
DRE# 02072527



# Post Production Creative Office Space for Sublease at The Link

2901 W Alameda Avenue  
Burbank, CA 91505  
3<sup>rd</sup> Floor



**Craig Miller**  
310.202.9008 x 101  
[craig@wilshireag.com](mailto:craig@wilshireag.com)  
DRE# 01006713

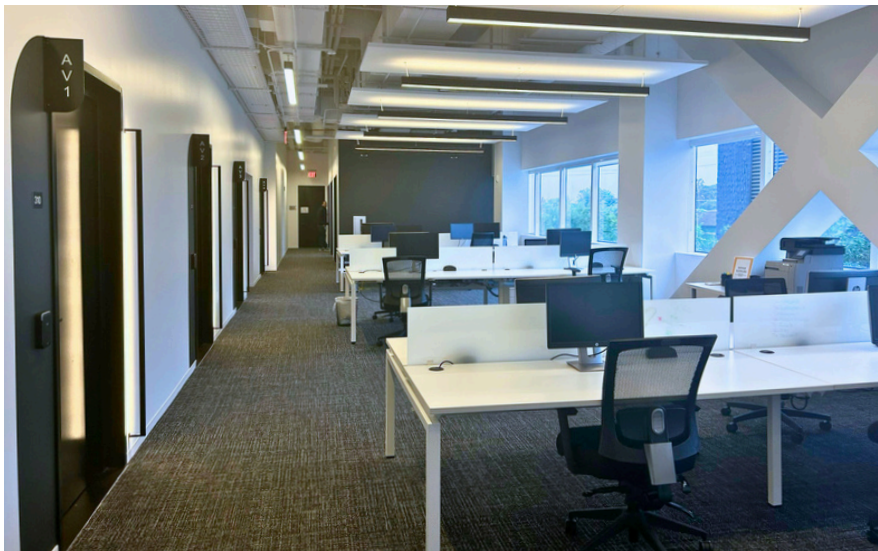


**Cassandra Miller**  
310.202.9008 x 115  
[cassandra@wilshireag.com](mailto:cassandra@wilshireag.com)  
DRE# 02072527



# Post Production Creative Office Space for Sublease at The Link

2901 W Alameda Avenue  
Burbank, CA 91505  
3<sup>rd</sup> Floor



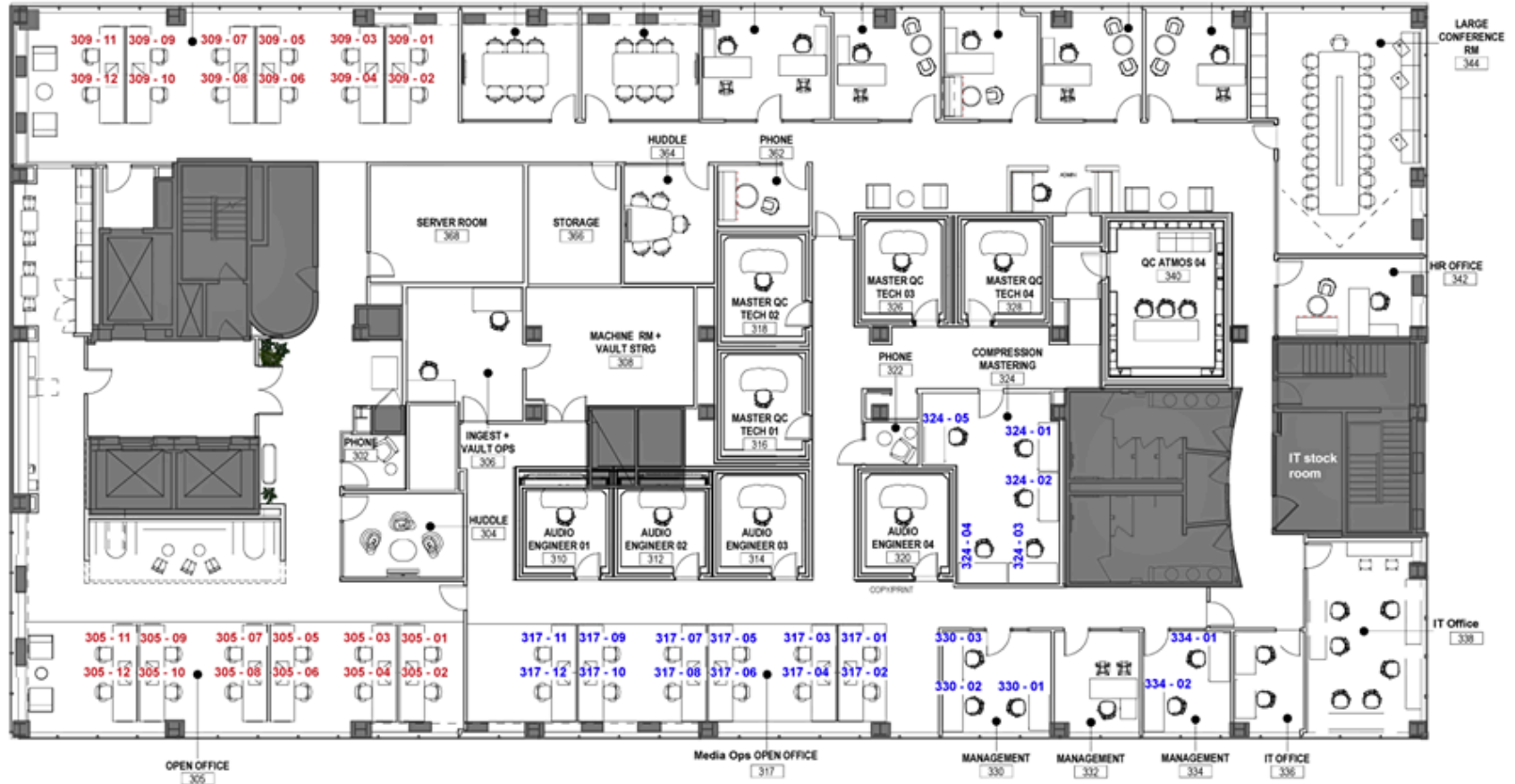
**Craig Miller**  
310.202.9008 x 101  
[craig@wilshireag.com](mailto:craig@wilshireag.com)  
DRE# 01006713



**Cassandra Miller**  
310.202.9008 x 115  
[cassandra@wilshireag.com](mailto:cassandra@wilshireag.com)  
DRE# 02072527

Post Production Creative Office Space  
for Sublease at The Link

2901 W Alameda Avenue  
Burbank, CA 91505  
3<sup>rd</sup> Floor



**Craig Miller**  
310.202.9008 x 101  
[craig@wilshireag.com](mailto:craig@wilshireag.com)  
DRE# 01006713



**Cassandra Miller**  
310.202.9008 x 115  
[cassandra@wilshireag.com](mailto:cassandra@wilshireag.com)  
DRE# 02072527