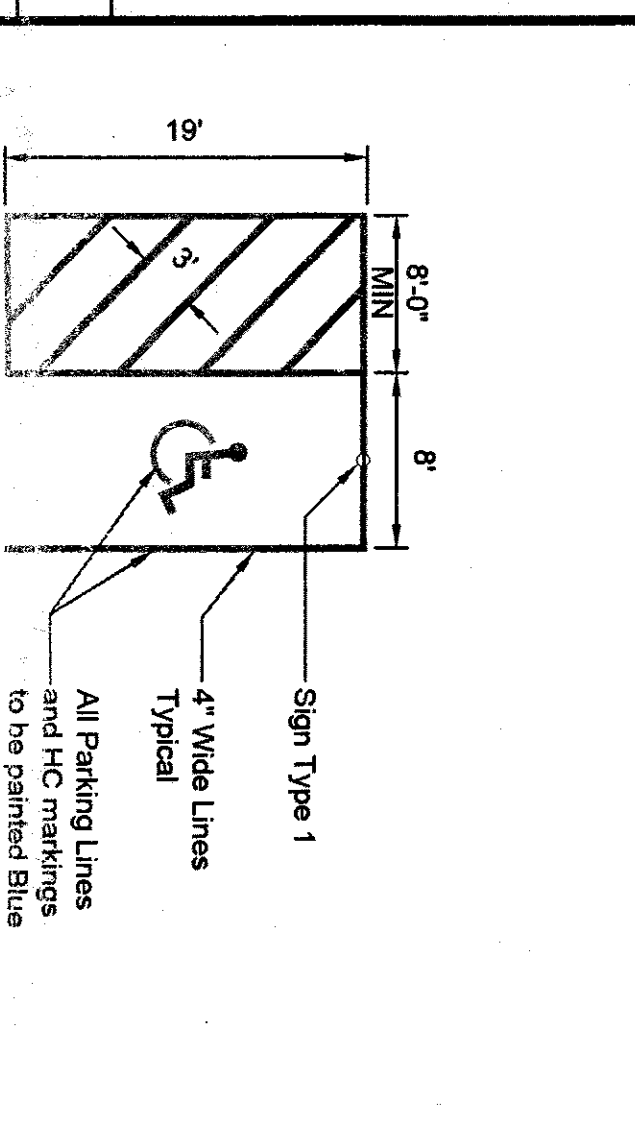
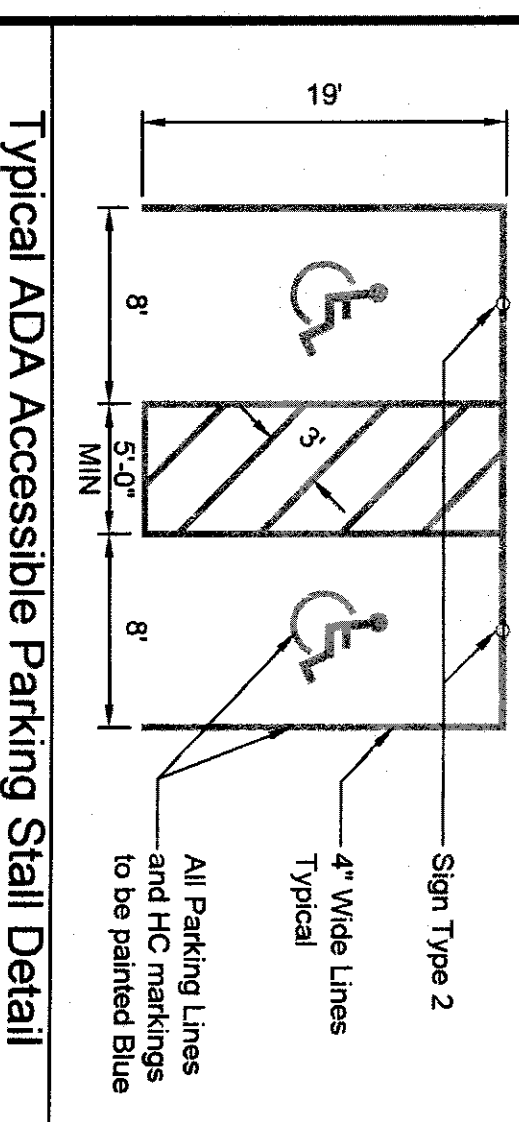
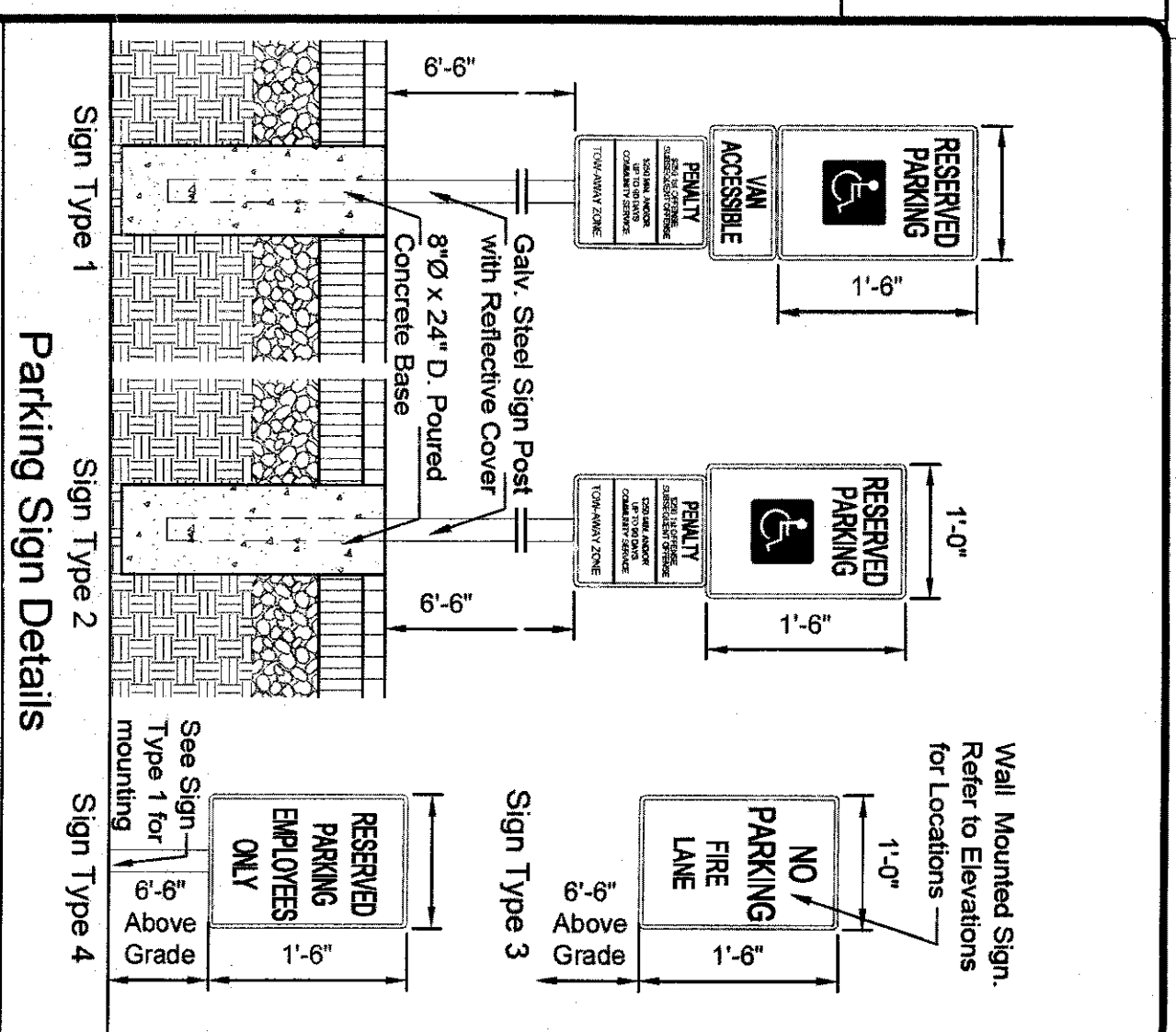


ON SITE PARKING TOTALS		
EXISTING PARKING SPACES		175
PROPOSED PARKING		
PROPOSED HANDICAP PARKING SPACES	202	
PROPOSED HANDICAP PARKING SPACES	8	
PROPOSED VAN ACCESSIBLE SPACES	3	
REQUIRED PARKING		
HEALTH CLUB - 25,000 SF / 200 SF	83 SPACES*	
MOVIE THEATRE 230 SEATS / 4 SEATS	65 SPACES	
RESTAURANT 5,500 SF / 200 SF	45 SPACES*	
RESTAURANT - 33 SEATING / 3 SEATING	11 SPACES	
TOTAL REQUIRED PARKING	202 SPACES	
VARIANCES REQUIRED		
* VARIANCE REQUIRED TO REDUCE RETAIL PARKING		
REQUIREMENT FROM 3,700 SF TO 3,000 SF / 200 SF		
REQUIREMENT FROM 3,700 SF TO 3,000 SF / 200 SF		
PARKING 151 SPACES / 200 SF		
* VARIANCE REQUIRED TO LIMITATIVE TWO LOADING BERTHS		



Typical Van Accessible Parking Stall Detail


Buter Planning Board Approval

DATE _____

DATE _____

	REVISED AS PER KINNELON PLANNING BOARD RESOLUTION MEMORIALIZED 10/4/2007	11-19-2007
	REVISED AS PER BUTLER PLANNING BOARD RESOLUTION MEMORIALIZED 7/19/2007	11-19-2007
MANAGER	ROSPONSKY/SILVERSONS	DATE

Mark S. Carrell
Architect
697 Valley St., Suite 2C
Maplewood, NJ 07040
(973) 378-5188
FAX (973) 378-3782



new york
sports clubs

PROJECT TITLE
Butler Bowl Redevelopment
1481 Route 23 South

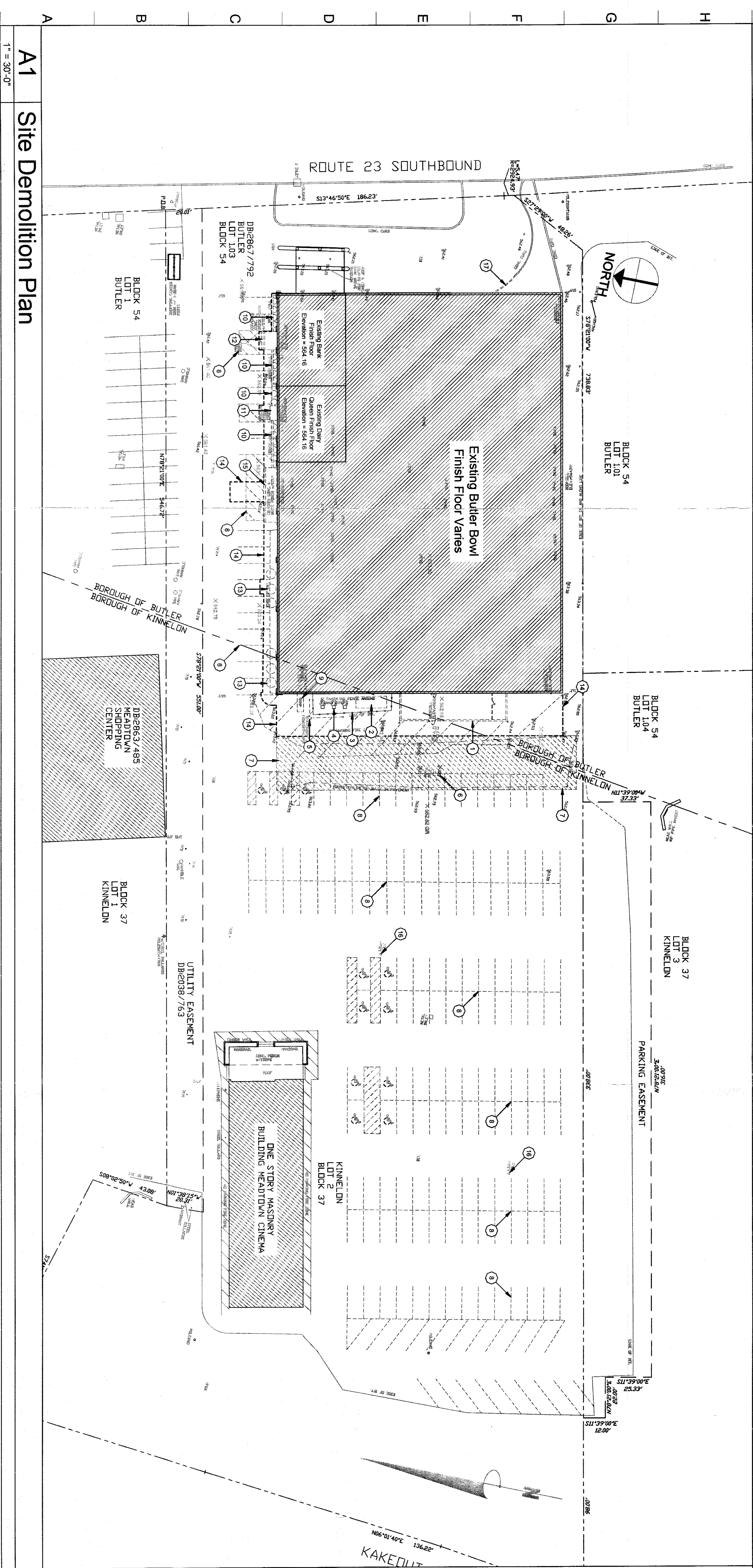
DRAWING TITLE
**PROPOSED SITE PLAN &
SITE DEMOLITION PLAN**

PROJECT NUMBER	SCALE
AS SHOWN	
SHEET NUMBER	
SP-1	

A1	Site Demolition Plan
----	----------------------

A15	Site Demolition Notes
-----	-----------------------

PROJECT NUMBER	SCALE
AS SHOWN	
SHEET NUMBER	
SP-1	



EXISTING SITE INFORMATION TAKEN FROM THE "PROPERTY & TOPOGRAPHIC SURVEY" OF BLOCK 34 ~ LOT 1 .03 ~ BOROUGH OF BUTLER & BLOCK 37 ~ LOT 2 ~ BOROUGH OF KINNELTON, MORRIS COUNTY, NEW JERSEY, PREPARED BY DOUGLAS B. SMITH PROFESSIONAL LAND SURVEYOR N.J. LLC, 43234 AND DATED FEBRUARY 15, 2007.