

AVAILABLE FOR SALE

# 13925 South Broadway

**FOR SALE**  
2.91 ACRES

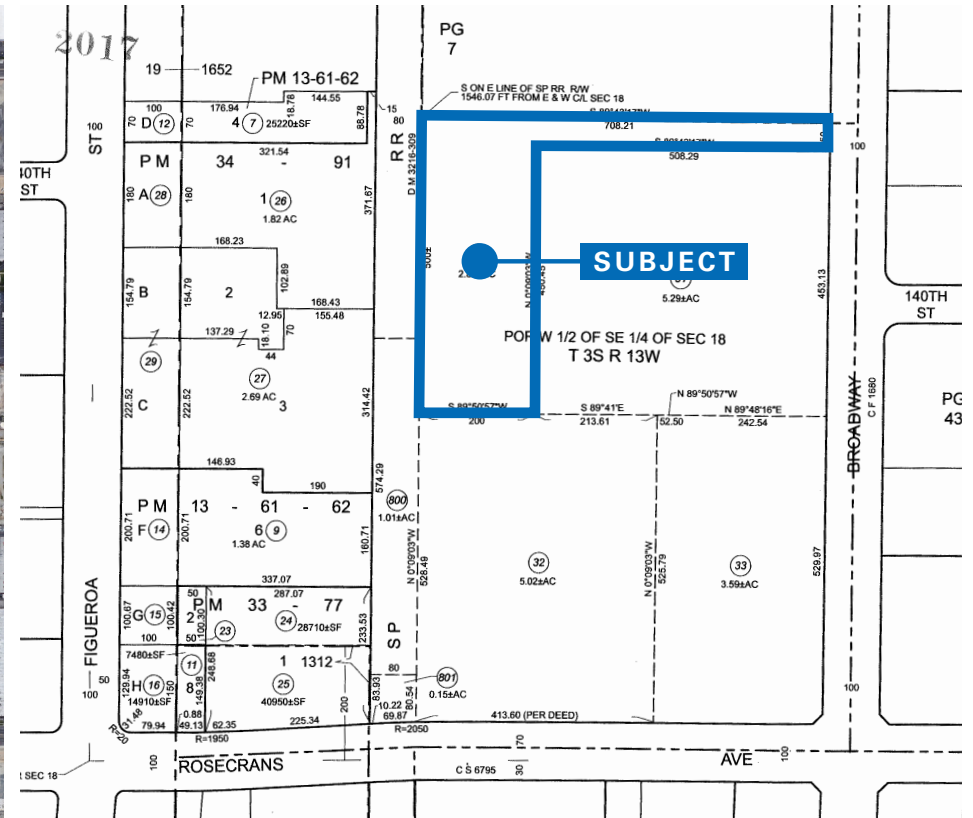
PREMIER INDUSTRIAL  
DEVELOPMENT OR  
INDUSTRIAL OUTDOOR  
STORAGE (IOS)

**NEWMARK**



AVAILABLE FOR SALE

# 13925 S. Broadway Unincorporated Los Angeles County, CA



For Sale: 2.91 Acres



Zoning: LCM2



Parcel Number:  
6132-044-030



Ideal Development or  
IOS Site



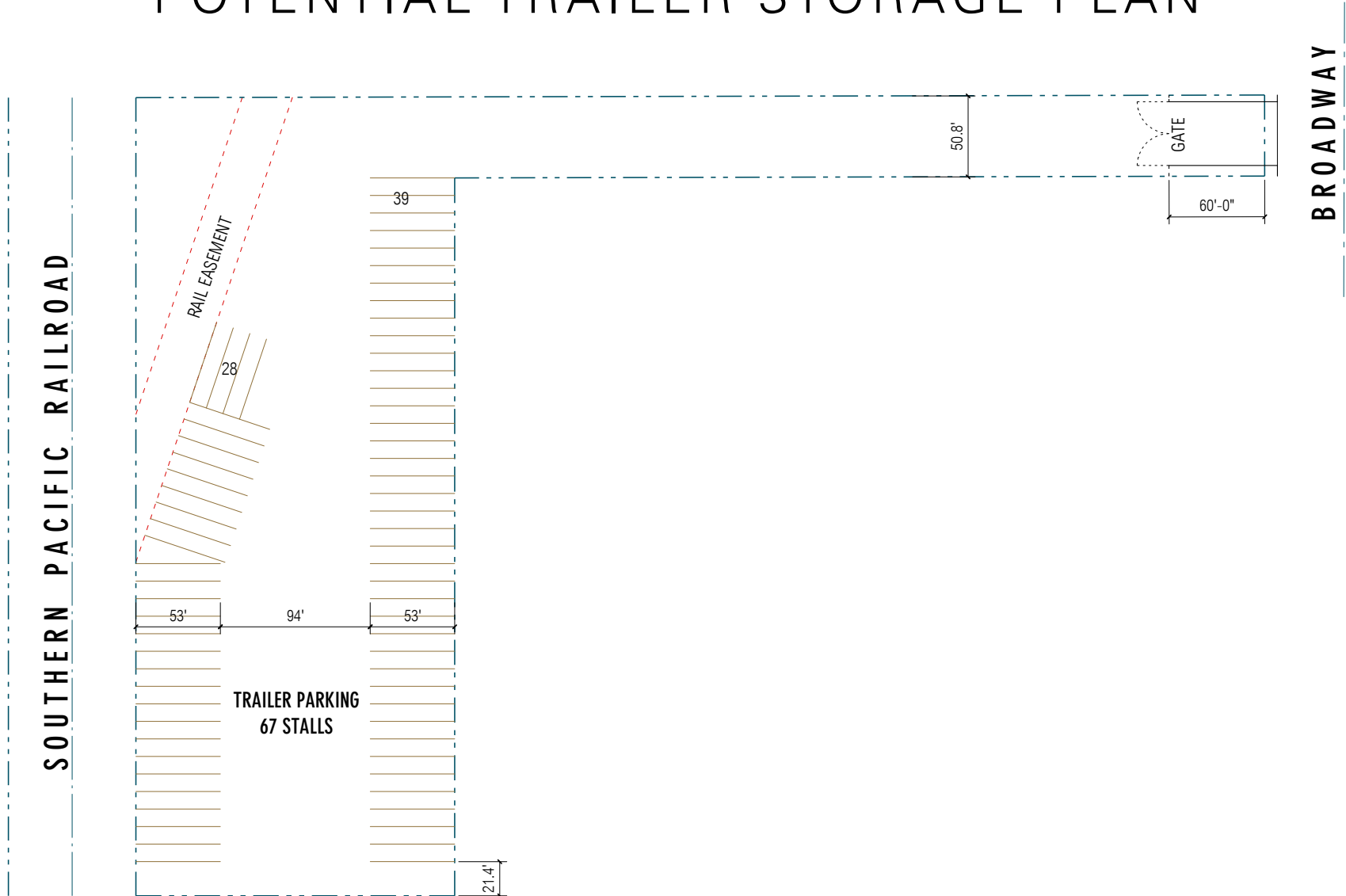
Desirable South Bay  
Location



Immediate (110)  
Freeway Access

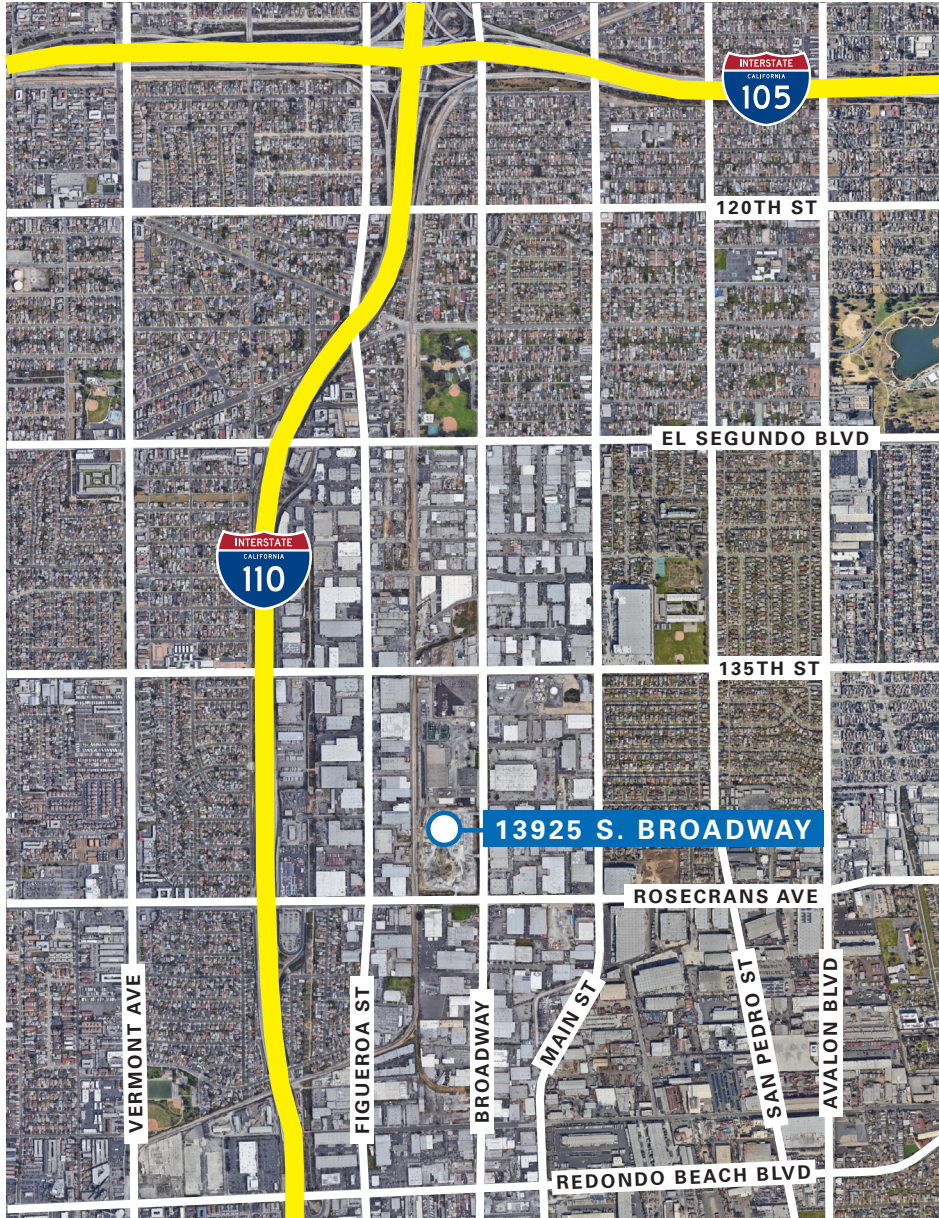
**NEWMARK**

# POTENTIAL TRAILER STORAGE PLAN



NOT TO SCALE

AVAILABLE FOR SALE  
13925 S. BROADWAY



NEWMARK

AVAILABLE FOR SALE  
 13925 S. BROADWAY



Direct Access to  
 Over **16M** People  
 Within **50 Miles**

**CONTACT**

**John McMillan**

Vice Chairman  
 t 310.491.2048  
 john.mcmillan@nrmk.com  
 CA RE License #01103292

**Danny Williams**

Executive Managing Director  
 t 310.491.2061  
 danny.williams@nrmk.com  
 CA RE License #01776416

**Drew Murphy**

Associate  
 t 310-491-2027  
 drew.murphy@nrmk.com  
 CA RE Lic. #02087431

[nrmk.com](http://nrmk.com)

**NEWMARK**

Corporate License #01355491

The information contained herein has been obtained from sources deemed reliable but has not been verified and no guarantee, warranty or representation, either express or implied, is made with respect to such information. Terms of sale or lease and availability are subject to change or withdrawal without notice.