

**CORNER RETAIL FOR LEASE**

**250** EGLINTON AVE. W.  
TORONTO, ON



**EGLINTON AVE. W. & ORIOLE PKWY**

**MIDTOWN TORONTO**

**YOUR SIGN HERE**

**AVAILABLE: 2,930 SF**



# PROPERTY HIGHLIGHTS

**250 Eglinton Ave. W.** is a three storey mixed use building located in Midtown Toronto. The retail unit that is available **For Lease** used to be occupied by a Bar/Restaurant.

Subject site is located at Eglinton Ave. W. & Oriole Pkwy, five blocks away from the busy intersection at Yonge St. Eglinton Ave.

The building is also steps away from North Toronto Memorial Community Centre.

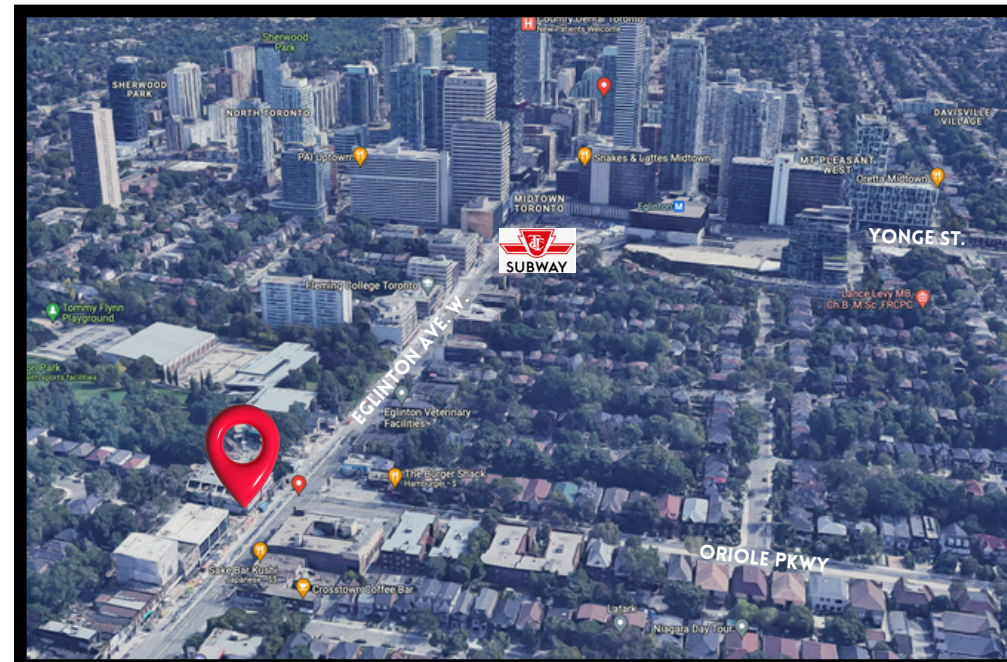
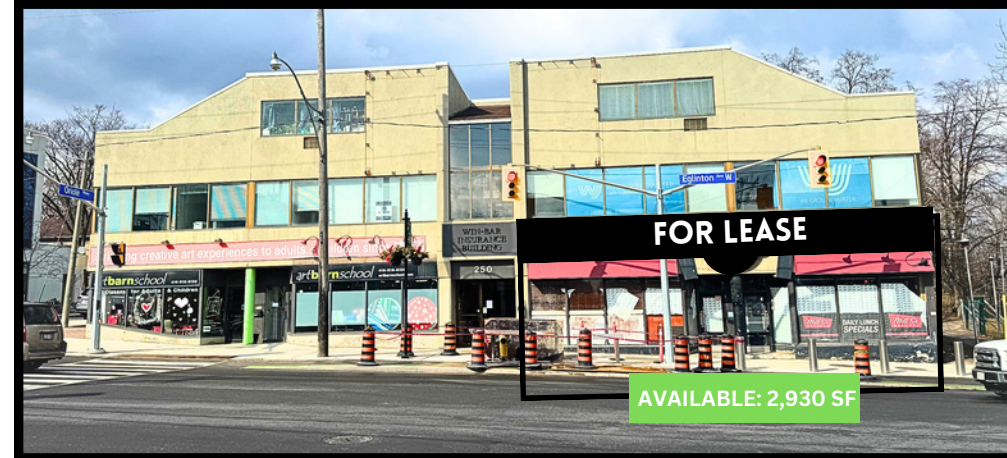
The retail units available are also across the street from Pizza Hut, Burger Shack and Sleep Country Canada.

## Available For Lease:

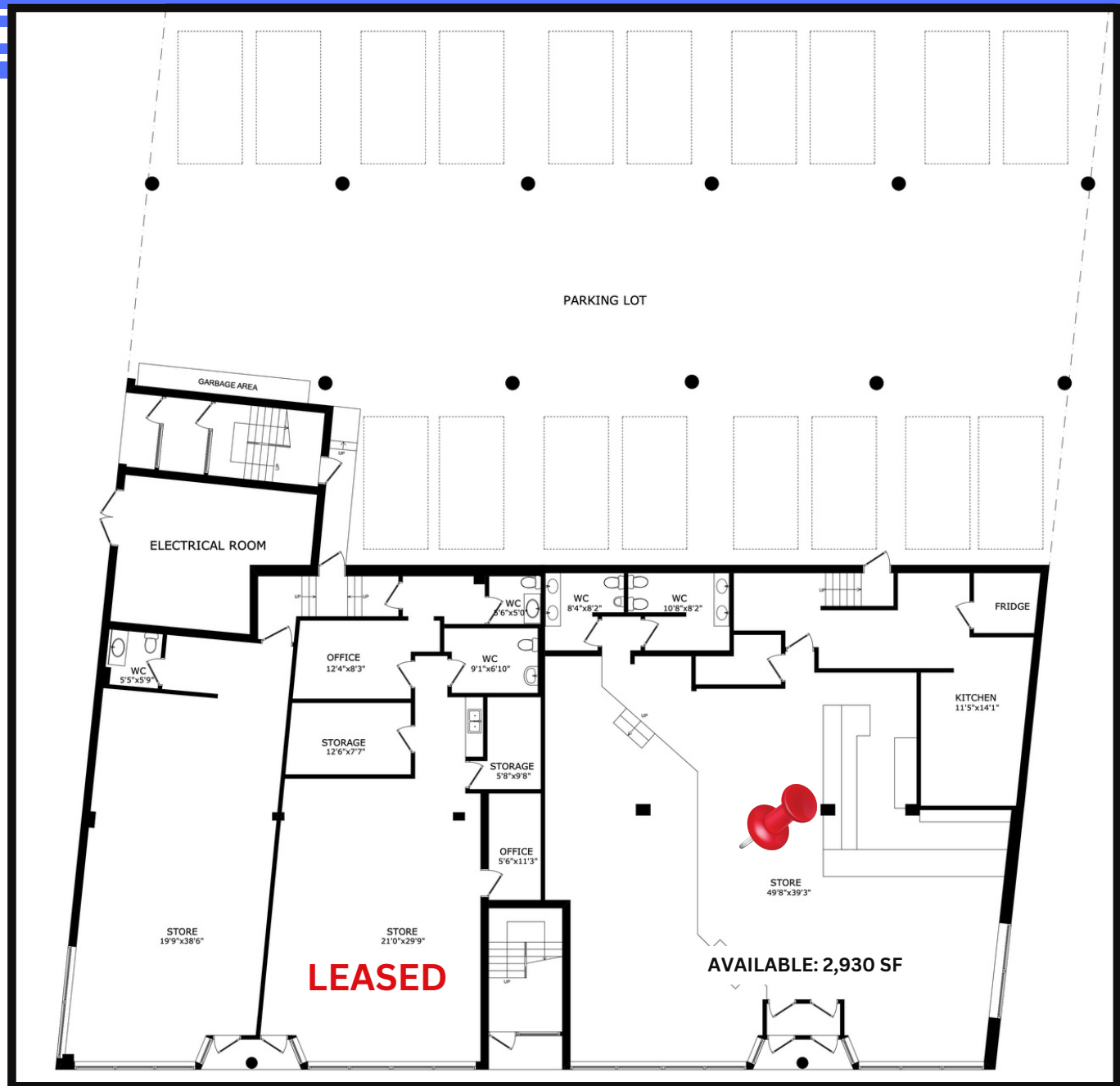
- 2,930 SF (Former Bar/Restaurant)
- Ideal for general retail, pet food store, professional & government services, medical and many more uses.
- Close proximity to Yonge & Eglinton TTC Subway Station.
- High densely populated area with tons of vehicle and walking traffic.
- Excellent signage & branding opportunity
- 12' Foot ceiling heights
- Covered parking available

## Additional Details:

- **Term:** 5 Years or 10 Years (Demolition Clause)
- **Net Rent:** Call Broker
- **TMI:** \$18.89 per SF/Year (2024)



# FLOOR PLAN



**LEASED**

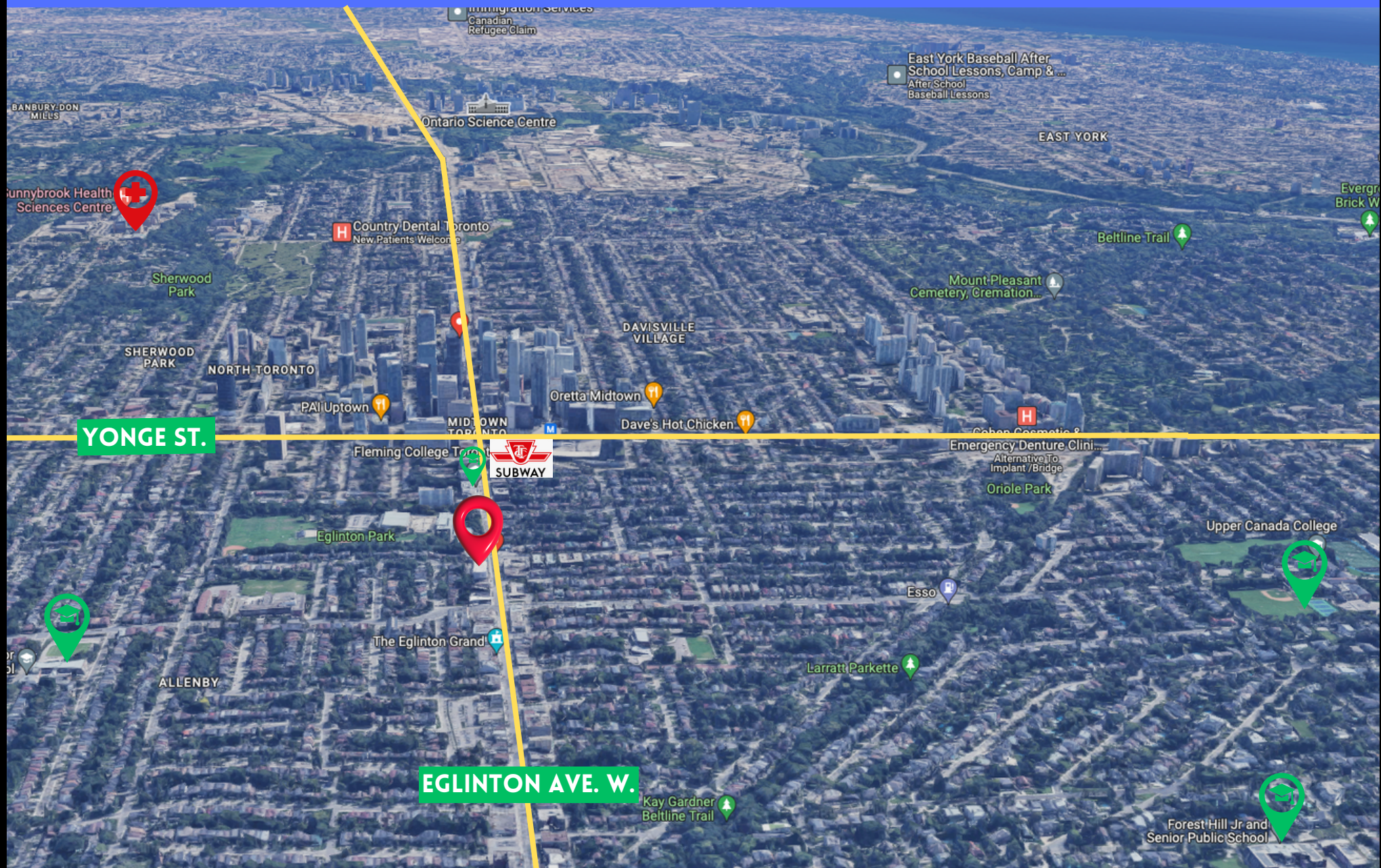
**AVAILABLE: 2,930 SF**

## AVAILABLE FOR LEASE:

- 2,930 SF (FORMER RESTAURANT)



# SITE AREA





# CONTACT INFORMATION CORNER RETAIL FOR LEASE

# 250 EGLINTON AVE. W. TORONTO, ON

## EGLINTON AVE. W. & ORIOLE PKWY



**YOUR SIGN HERE**

**AVAILABLE: 2,930 SF**

**Shawn Abramovitz, BA**  
CEO | Broker of Record  
416.900.3878 Ext: 102  
[shawn@pivotalcommercialrealty.com](mailto:shawn@pivotalcommercialrealty.com)

