



420 East Fesler Street | Santa Maria, CA



# FOR SALE

FREE-STANDING BUILDING | ±7,500 SF

This free standing, single-story commercial building is located just one block north of Main Street in a quiet neighborhood. With historical significance as a former preschool, the property offers unique character and charm. A rear playground area provides the opportunity for conversion into additional parking, making it a versatile and promising space for a variety of commercial uses.

Information contained herein has been obtained from the owner of the property or from other sources deemed reliable. We have no reason to doubt its accuracy, but we do not guarantee it.

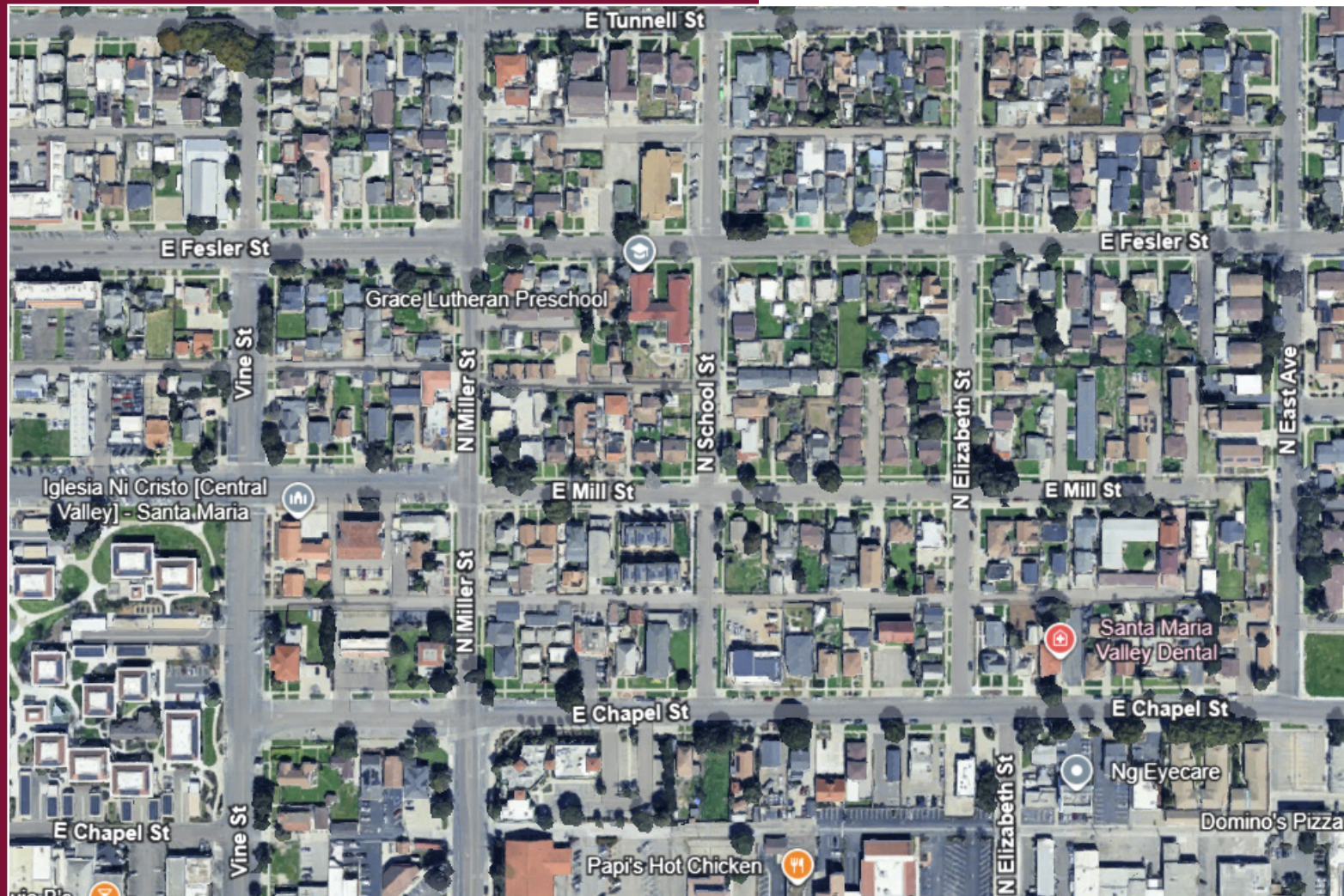
## Contact Us

Mike Kelly, Lic #01800988  
805.928.2800 ext. 113  
Mike@PacificaCRE.com

Pat Palangi, Lic #01108680  
805.928.2800 ext. 105  
Pat@PacificaCRE.com

PO Box 250  
Santa Maria, CA 93456  
PacificaCommercialRealty.com

# 420 East Fesler Street | Santa Maria, CA



## Sale & Property Details

- Price: \$1,300,000
- Square Footage: +/-7,500 SF
- Parcel Size: +/-24,393 SF
- Zoning: R-2 (Multi Family)
- HVAC: Yes

Information contained herein has been obtained from the owner of the property or from other sources deemed reliable. We have no reason to doubt its accuracy, but we do not guarantee it.