

# West Broad Workspaces

340 MLK Jr. Blvd, Suite C



**For Lease - 3+ month terms**

FOR MORE INFORMATION, PLEASE  
CONTACT:

**Mandy Zanski**


Email: [mandy@judgerealty.com](mailto:mandy@judgerealty.com)

**Lori Judge**

Email: [lori@judgerealty.com](mailto:lori@judgerealty.com)

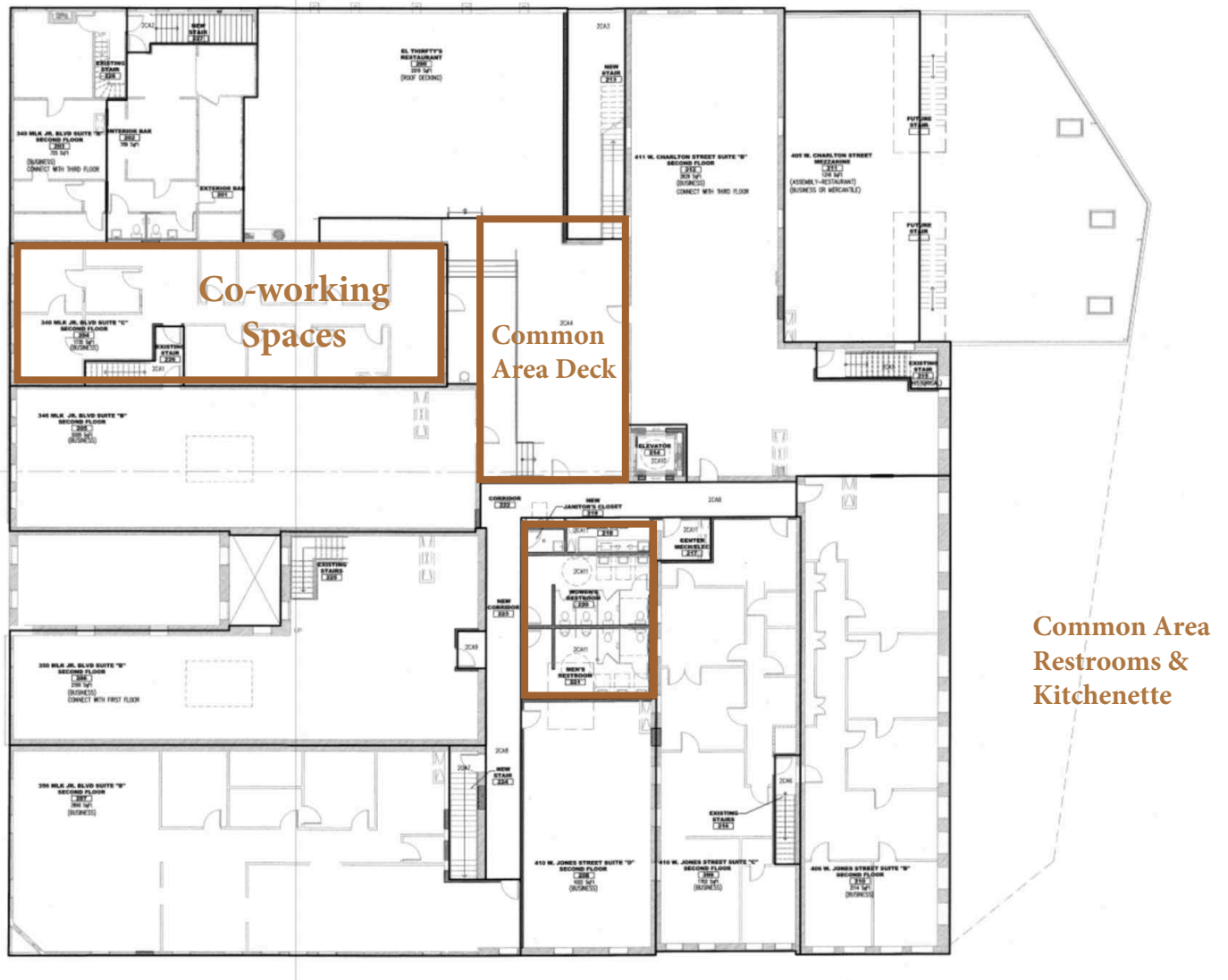


 345 Abercorn Street Savannah , GA 31401

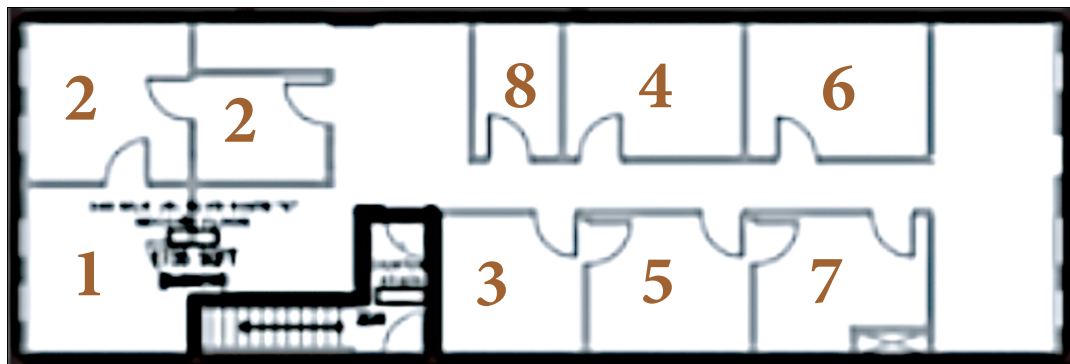
 (912) 236 1000

- 8 workspaces at varying sizes and rent rates
- keypad access from Martin Luther King Jr. Blvd.
- building amenities include restrooms, kitchenette, and interior and exterior common areas
- fiber optic internet and all utilities included in rent rate
- 24 off-street parking spaces and close proximity to Liberty Street Parking Deck
- Easy access directly off of I-16

# Floorplans



## Work Spaces



- Suite 1 - Leased
- Suite 2 - Available
- Suite 3 - Available
- Suite 4 - Leased

- Suite 5 - Available
- Suite 6 - Leased
- Suite 7 - Available
- Suite 8 - Available

# West Broad Redevelopment

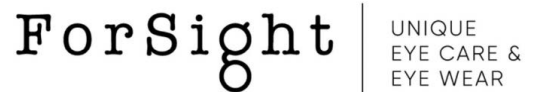


Completed in 2019, West Broad is a full block historic redevelopment project located in the center of Savannah’s rapidly reemerging Westside. The interior has been completely renovated with new electrical, plumbing and mechanical systems in each unit. A newly created common corridor, shared kitchenette, and shared restroom facilities connect the property.

# LOCAL AREA



## WEST BROAD TENANT ROSTER

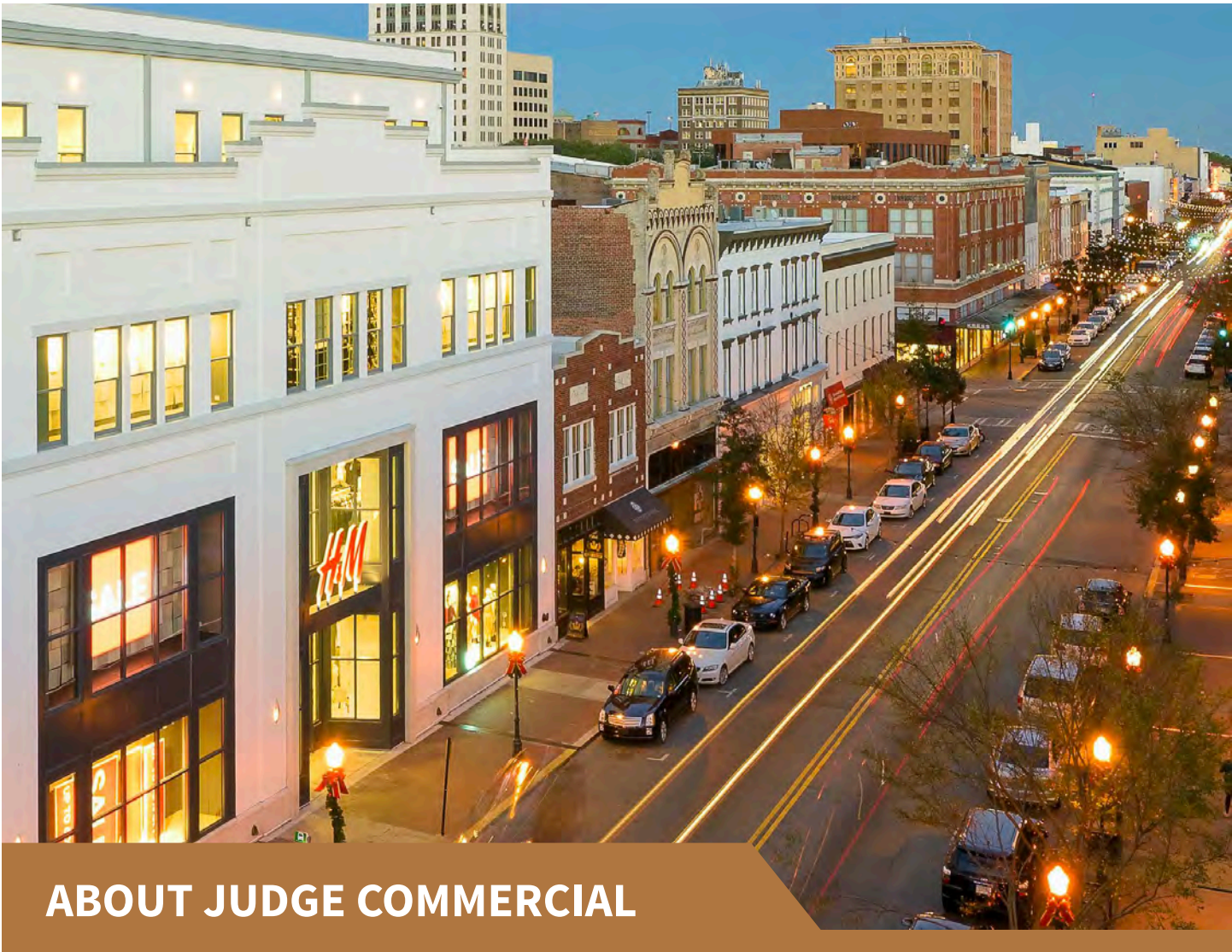


ATHLETICS & MINDFULNESS  
PERSONAL TRAINING



National  
Marine Sanctuary  
Foundation





## ABOUT JUDGE COMMERCIAL


Judge Commercial is the leader in Savannah Commercial Real Estate. We manage and lease over 500 properties in the Savannah area and work with local and national clients across the USA.

If you would like to get in touch please contact us using the details below:

 345 Abercorn Street Savannah , GA 31401

[info@judgecommercial.com](mailto:info@judgecommercial.com)



 (912) 236 1000

[judgecommercial.com](http://judgecommercial.com)



COMMERCIAL – RESIDENTIAL – PROPERTY MANAGEMENT - DEVELOPMENT

 **JUDGE COMMERCIAL**