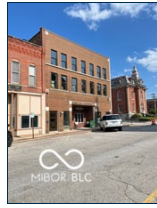


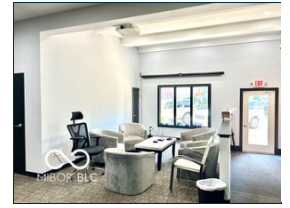
Front of the building from the south



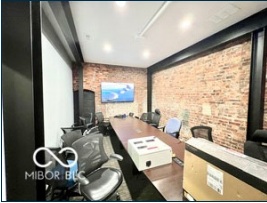
Front of the building from the north



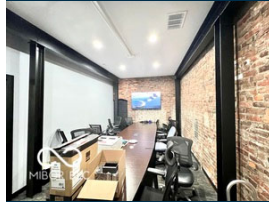
Lobby/entry



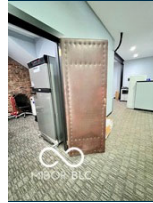
Lobby/waiting area.



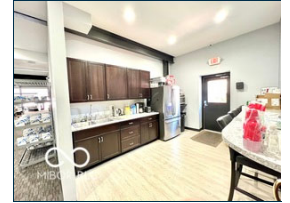
Conference room on the main level.



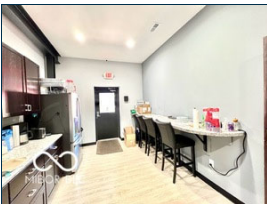
Conference room on the main level.



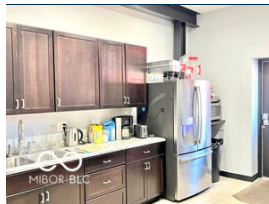
Leather wrapped doors to the conference room.



Main level kitchen/break room.



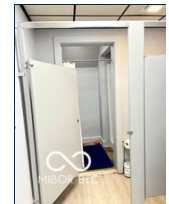
Main level kitchen/break room.



Main level kitchen/break room.



Main level bath area.



Main level bath areas.



Main level open work spaces/desk areas.



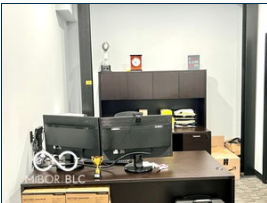
Main level open work spaces/desk areas.



Main level open space and cubicle area.



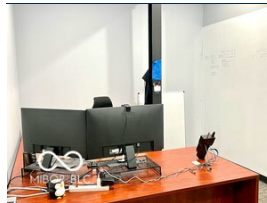
Main level assembly area



Main level office.



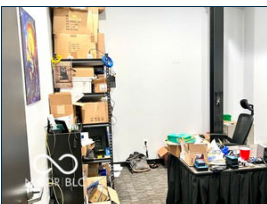
Main level office wetbar and bath area.



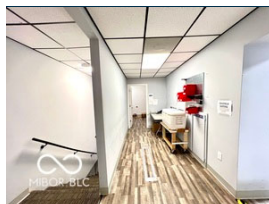
Main level office.



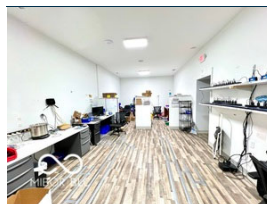
Main level office



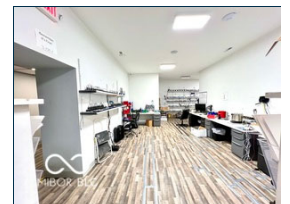
Main level office.



Stairway from main level and hall storage.



Upstairs work room



Upstairs work room



Upstairs storage room; could be private office.



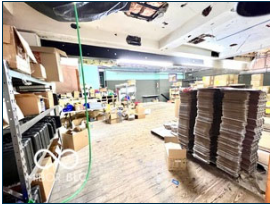
Upstairs break room and bath areas.



Upstairs storage area.



Upstairs storage area



2nd level warehouse area.



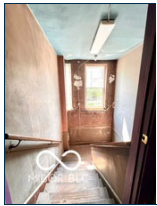
2nd level warehouse area.



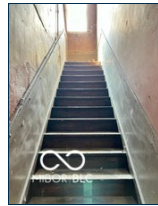
2nd level loft storage room.



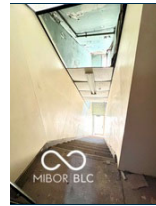
Unfinished 3rd floor.



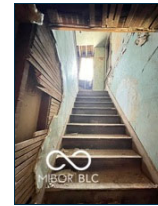
Second stairwell to 2nd and 3rd levels.



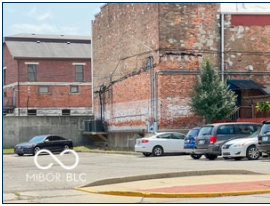
Stairwell to second and third floors off the front entry.



Separate entryway to upstairs 2nd and 3rd floors.



Separate entryway to upstairs 2nd and 3rd floors.



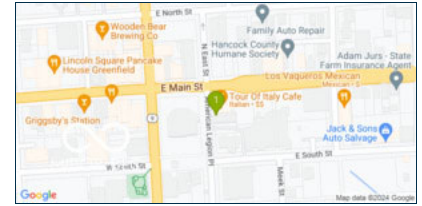
Rear of the building and parking area.



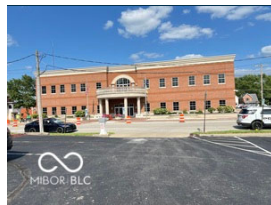
Rear of the building.



Rear of the building.



Court house plaza across from the office.



Hancock County Annex building south of the office.



Penny Trail head south of the office.



The Penny Trail head just south of the office.



