



## 8,319 sf of rare urban retail space in desirable area

- 24 dedicated parking stalls; rare for the area
- Area tenants include: Lund's & Byerly's, Trader Joe's, McCoy's, Slumberland Furniture, Fresh Thyme, Starbucks, Lulu & Luigi and more
- Great visibility off of Excelsior Blvd
- Well maintained; high-end landscaping
- Signage on multiple sides of the building
- Turnkey space with gleaming, polished floors and high ceilings

**Get more  
information**

**Jim Rock, CCIM**  
Principal  
D 612 913 5654  
[jim.rock@avisonyoung.com](mailto:jim.rock@avisonyoung.com)

## Retail property for lease

4300 West 36 1/2 Street, St. Louis Park, MN 55416



### Property Description

8,319 sf available for lease in highly desirable retail area.

Spaces	Lease Rate	Space Size
4300 West 36 1/2 Street	Negotiable	8,319 SF

### Offering Summary

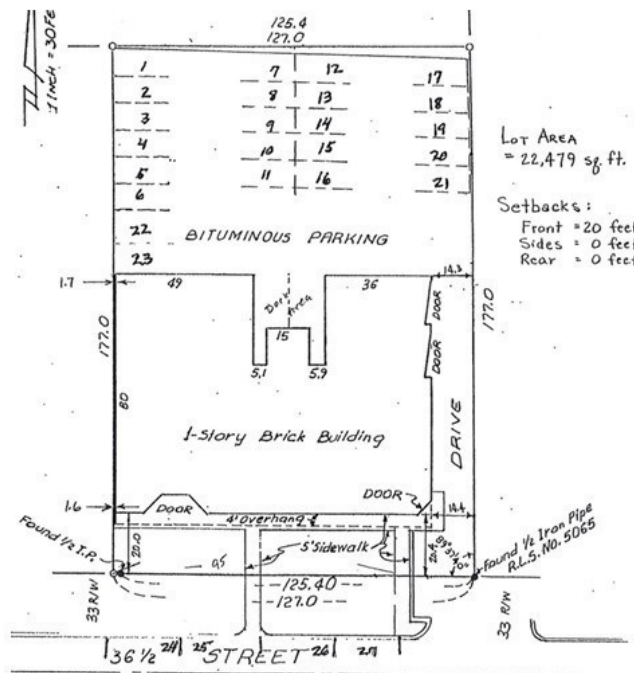
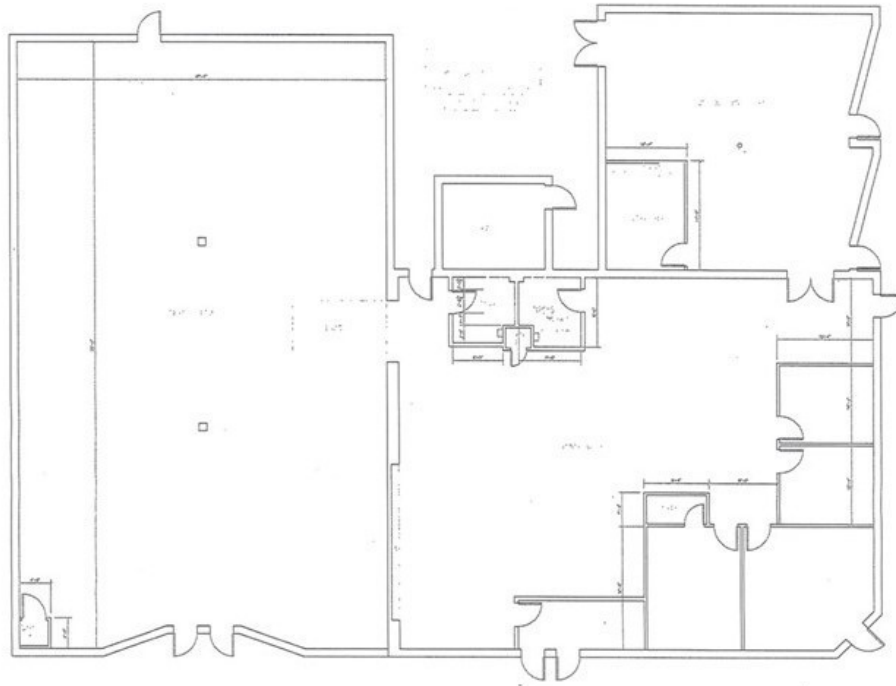
Lease Rate:	Negotiable
Available SF:	8,319 SF
Building Size:	8,319 SF

**AVISON  
YOUNG**

**Jim Rock, CCIM**  
Principal  
D 612 913 5654  
jim.rock@avisonyoung.com

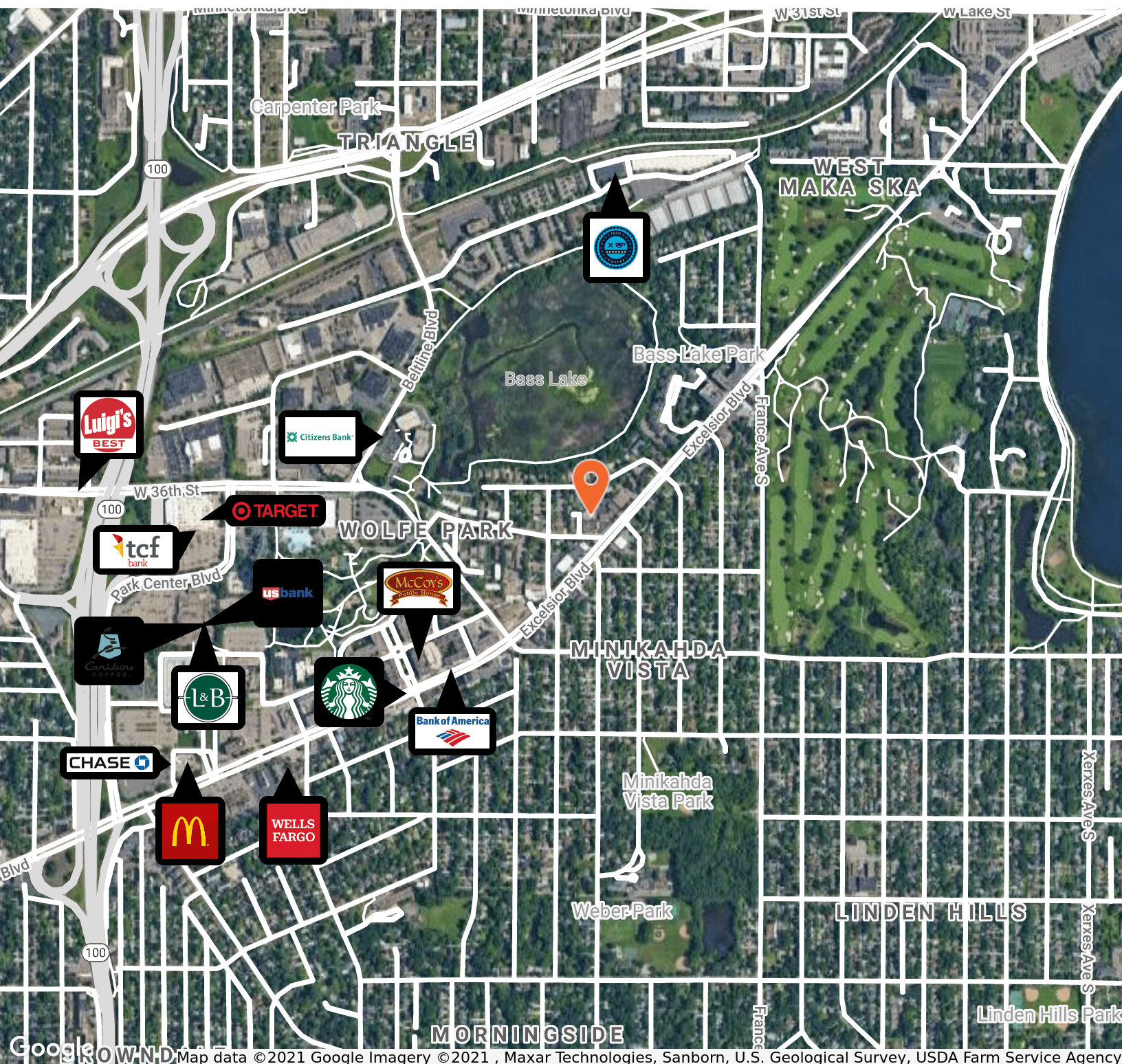
Avison Young | 800 Nicollet, Suite 730 | Minneapolis, MN 55402 | 612 913 5647

© 2021. Avison Young. Information contained herein was obtained from sources deemed reliable and, while thought to be correct, have not been verified. Avison Young does not guarantee the accuracy or completeness of the information presented, nor assumes any responsibility or liability for any errors or omissions therein.



# Amenity map

4300 West 36 1/2 Street, St. Louis Park, MN 55416



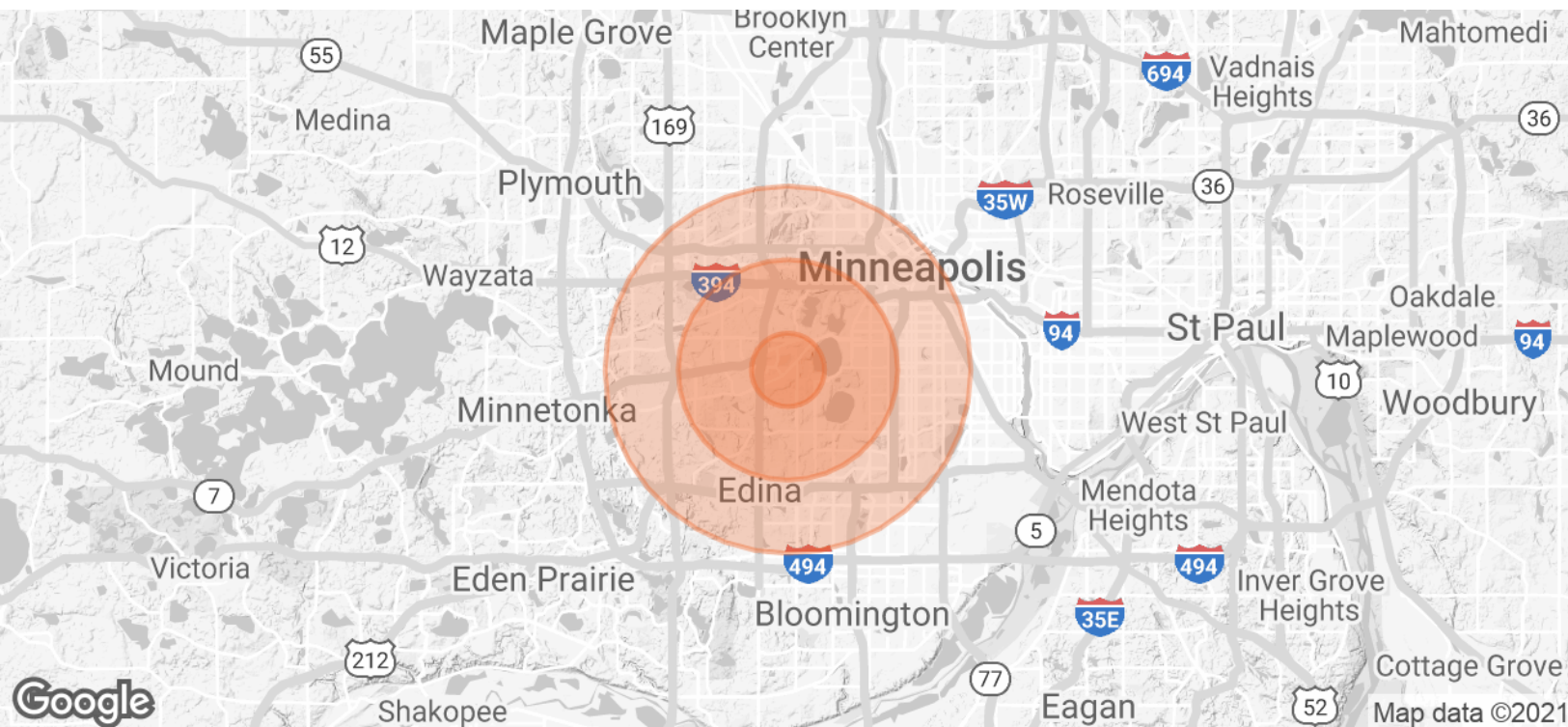
Google WND Map data © 2021 Google Imagery © 2021, Maxar Technologies, Sanborn, U.S. Geological Survey, USDA Farm Service Agency

**AVISON  
YOUNG**

**Jim Rock, CCIM**  
Principal  
D 612 913 5654  
jim.rock@avisonyoung.com

Avison Young | 800 Nicollet, Suite 730 | Minneapolis, MN 55402 | 612 913 5647

© 2021, Avison Young. Information contained herein was obtained from sources deemed reliable and, while thought to be correct, have not been verified. Avison Young does not guarantee the accuracy or completeness of the information presented, nor assumes any responsibility or liability for any errors or omissions therein.



Population	1 Mile	3 Miles	5 Miles
Total Population	15,334	121,288	383,141
Average age	35.0	36.6	36.1
Average age (Male)	33.5	35.9	35.6
Average age (Female)	37.1	37.6	36.7
Households & Income	1 Mile	3 Miles	5 Miles
Total households	8,090	58,082	177,908
# of persons per HH	1.9	2.1	2.2
Average HH income	\$92,867	\$107,037	\$84,419
Average house value	\$411,309	\$461,338	\$379,084

\* Demographic data derived from 2010 US Census



**Jim Rock, CCIM**  
Principal  
D 612 913 5654  
jim.rock@avisonyoung.com