

**For Sale**  
**VACANT LOT**  
**Northeast Corner Santa Fe & St. Johns Place**  
**Hemet, California**



**Best Vacant Lot For Medical Building Adjacent To Hospital**

- Size: Approximately .46 acres
- **Located within one block of hospital**
- St. Johns Place is between Florida Avenue & Latham Avenue
- APN 445-251-031
- Zoning: OP (Office-Professional) City of Hemet – Buyer to verify

**ASKING PRICE: \$300,000**

**FOR ADDITIONAL INFORMATION CONTACT**

**Guy W. Excell or Howard B. Rosenthal**

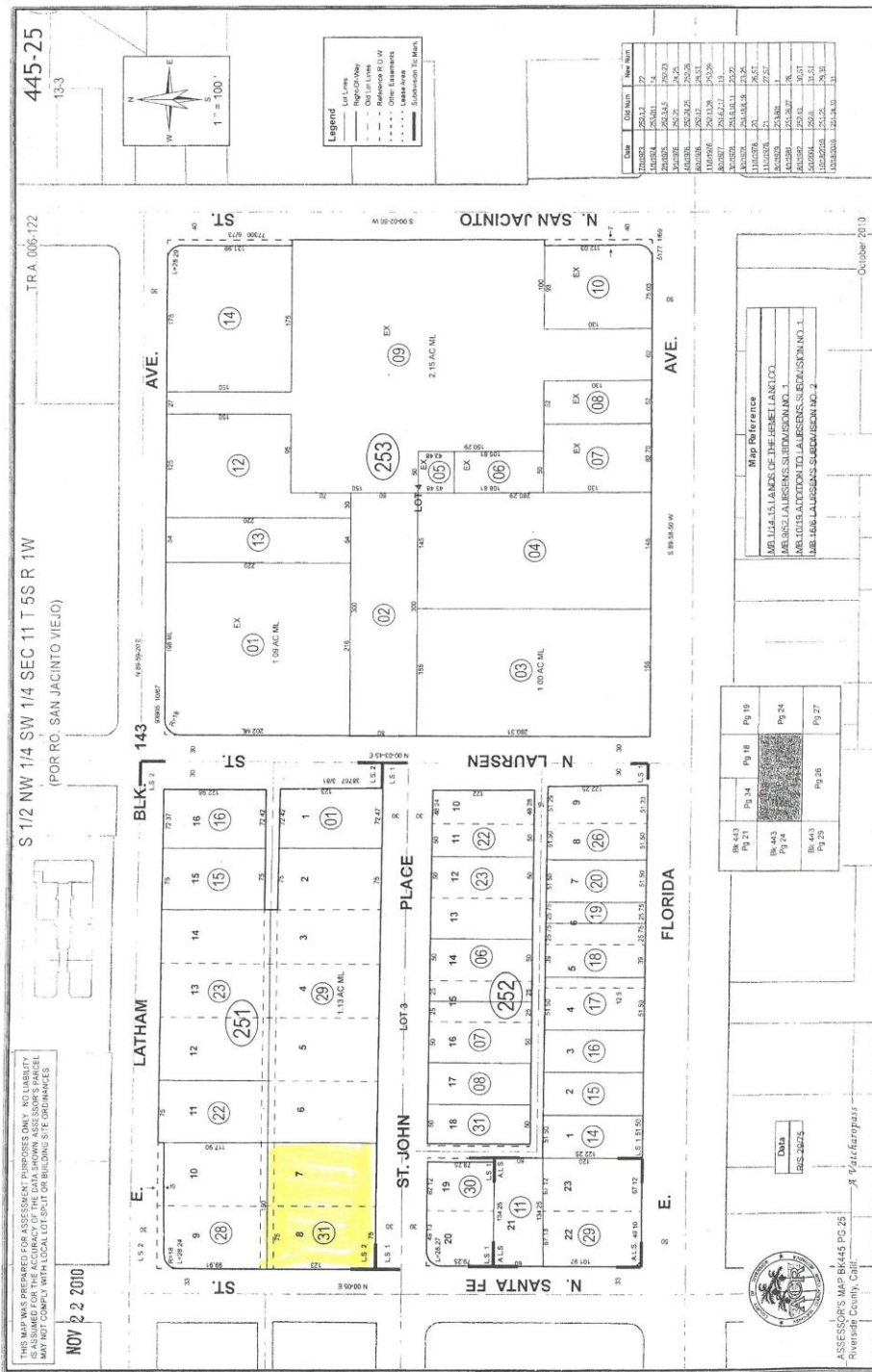
**(951) 658-2559**

**DRE License No. 01138381**



**Rosenthal & Excell**  
Commercial Real Estate Services

1600 East Florida Avenue, Suite 110  
Hemet, California 92544  
(951) 658-2559 • Fax: (951) 658-7690  
email: [hrg@rosenthalexcell.com](mailto:hrg@rosenthalexcell.com)



THIS MAP WAS PREPARED FOR ASSESSMENT PURPOSES ONLY. NO LIABILITY IS ASSUMED FOR THE ACCURACY OF THE DATA SHOWN. ASSESSOR'S PANEL MAY NOT CORRECTLY REFLECT LOT SPLIT OR BUILDING SITE DIMENSIONS.

NOV 2 2010

**FOR ADDITIONAL INFORMATION CONTACT**  
**Guy W. Excell or Howard B. Rosenthal**  
**(951) 658-2559**

**DRE License No. 01138381**



**Rosenthal & Excell**  
 Commercial Real Estate Services

1600 East Florida Avenue, Suite 110  
 Hemet, California 92544  
 (951) 658-2559 • Fax: (951) 658-7690  
 email: hrge@rosenthalexcell.com

This map/plot is being furnished as an aid in locating the herein described land in relation to adjoining streets, natural boundaries and other land, and is not a survey of the land depicted. Except to the extent a policy of title insurance is expressly modified by endorsement, if any, the Company does not insure dimensions, distances, location of easements, acreage or other matters shown thereon.