

FOR LEASE

1101 BRICKELL AVENUE MIAMI FL 33131

1101brickell.com

1101
BRICKELL

Colliers



Florida East Coast Realty, LLC

60 Years/60 Million sq ft of construction



\$12 MILLION

in renovations



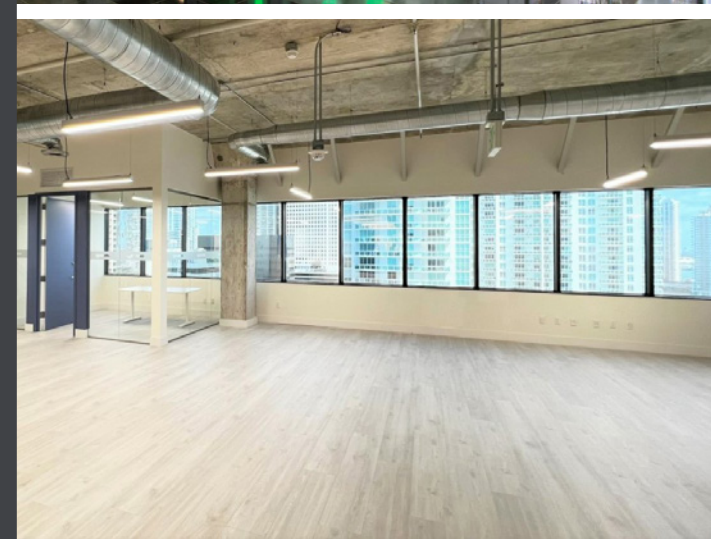
OVERVIEW

Firms seeking prime location, premium office space in Miami need look no further than 1101 Brickell. Featuring two, iconic towers housing some of the most prominent domestic and international companies in the area, 1101 Brickell offers the best of both worlds—latest technology and corporate luxury. 1101 Brickell's striking all-glass façade projects a sense of prominence and prestige, offering a cache unmatched by other office buildings in Miami.



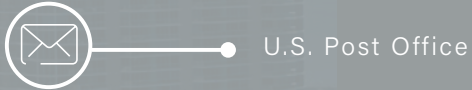
PROPERTY HIGHLIGHTS

- + Private arrival court and porte cochere entry
- + Covered parking and valet services
- + Electric car charging stations
- + Car washing and detailing services
- + On-site management and 24-hour security
- + Spectacular bay and city views
- + Pedestrian promenade/walkway, connecting Brickell Avenue to Brickell Bay Drive
- + New upscale restaurant coming soon
- + High-speed fiber optic service telecom system



LOCATION

Located within 1101 Brickell and the adjacent Panorama Tower, is a plethora of on-premises restaurants, retail establishments, and other conveniences. Situated in the heart of the "Wall Street of the South", tenants are within easy walking distance of a host of important decisions. 1101 Brickell provides companies with the ideal hub for their business operations



U.S. Post Office



Florida International University



Daxson Maximus, fine men's salon and custom clothier



Anjali Dry Cleaners



TD Bank and First Horizon Bank



Coffee Zone, gourmet beanyery and lite bite restuarant



Brickell Preschool



Hyatt Centric Hotel with 208 rooms



My Deli Market, speciality gourmet grocery market

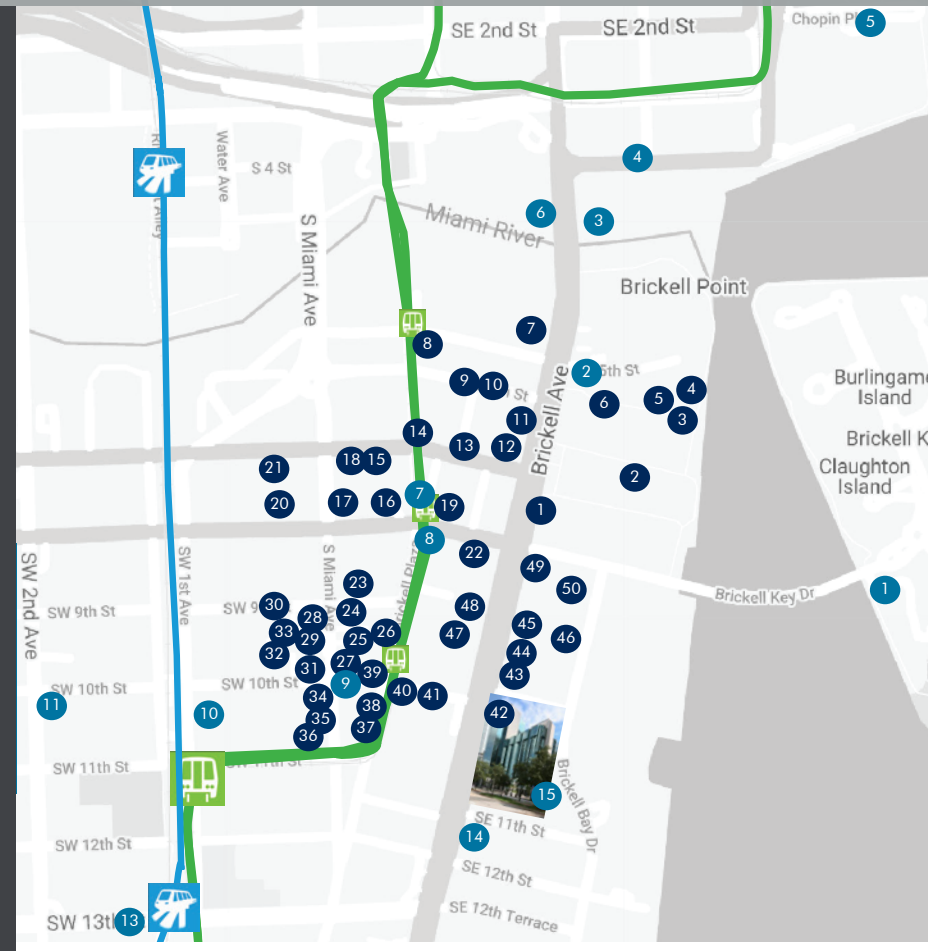


RESTAURANTS

- | | |
|------------------------|-------------------------|
| 1. Truluck's | 26. Shake Shack |
| 2. Threefold Cafe | 27. Balans |
| 3. Cipriani | 28. Moxie's |
| 4. Cantina La Veinte | 29. Toscana Divino |
| 5. Addikt | 30. Raw Juice |
| 6. Panther Coffee | 31. North Italia |
| 7. Capital Grille | 32. Burger & Beer Joing |
| 8. Friend's | 33. Happea's |
| 9. Pizza Rustica | 34. Mister 01 |
| 10. Hibachi Grill | 35. Dolores |
| 11. Hutong | 36. Socal Cantina |
| 12. Flemmings | 37. Akashi |
| 13. B Bistro | 38. Latin Cafe |
| 14. River Oyster Bar | 39. Perricone's |
| 15. Dr. Smood | 40. DC Pie |
| 16. Tacology | 41. Crema |
| 17. Pubbelly Sushi | 42. Nusr-et |
| 18. Luke's Lobster | 43. Sushi Siam |
| 19. Quinto La Huella | 44. GreenLife Cafe |
| 20. Casa Tua Food Hall | 45. Pasion Del Cielo |
| 21. Luna Park | 46. Palmas Cafe |
| 22. Gaults Cafe | 47. Atelier Cafe |
| 23. Chipotle | 48. Amour de Miami |
| 24. P.F. Chang's | 49. Bolay |
| 25. Starbucks | 50. Komodo |

HOTELS

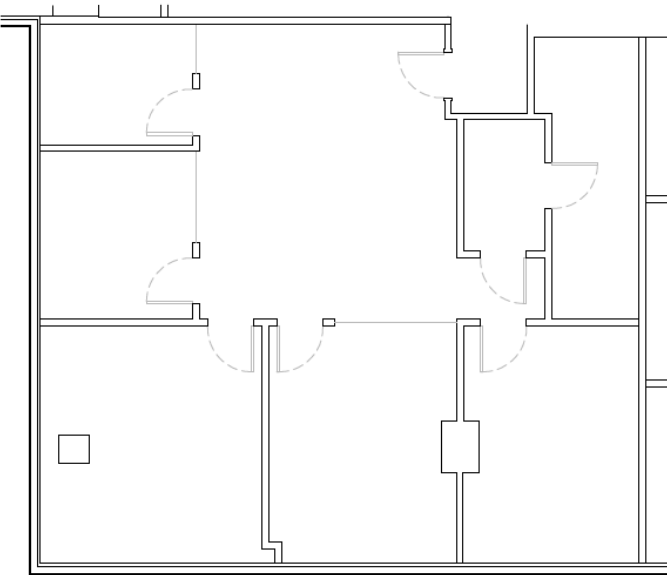
- | | |
|------------------------|-------------------|
| 1. Mandarin Oriental | 9. Citizen M |
| 2. W Hotel | 10. Hampton Inn |
| 3. Epic Hotel | 11. Aloft |
| 4. JW Marriott Marquis | 12. Brickell Luxe |
| 5. Intercontinental | 13. SLS |
| 6. Hyatt | 14. JW Marriott |
| 7. East Hotel | 15. Hyatt Centric |
| 8. SLS Lux | |



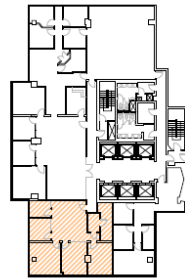
AVAILABILITIES

- + Full floor opportunities starting at 7,500 SF up to 39,000 RSF
- + Move-in ready options ranging from 1,000 RSF and up
- + Unparalleled elevator exposure for smaller blocks of space

MOVE-IN READY SPEC SUITES



Suite N-1003
1,642 RSF



VIEW 3D
SPACE





CONTACT US

Kevin Gonzalez
Senior Vice President
+1 305 896 3900
kevin.gonzalez@colliers.com

Jake Freeman
Associate Vice President
+1 631 745 2964
jake.freeman@colliers.com

Ana Paula
Vice President
+1 305 297 4684
ana.paula@colliers.com