

2000

WEST LOOP SOUTH

CAPITAL
COMMERCIAL
INVESTMENTS, INC



TRANSWESTERN

REAL ESTATE SERVICES

2000 WEST LOOP SOUTH

**PRIME 22-STORY OFFICE BUILDING
LOCATED IN ONE OF THE WORLD'S
MOST PRESTIGIOUS BUSINESS
DISTRICTS**

Exceptional Visibility

Unparalleled Ingress and Egress Along 610

Numerous Walkable Restaurants and Hotels

Ideal Access + Prominent Location

Spec Suites Available on Levels 12 & 13

Coffee Bar in the Lobby

Fitness Center with Locker Rooms and Showers

On-site Dining

On-site Property Management

24-hour Security

Building Features

AT 2000 WEST LOOP SOUTH



Prime Location

THE PROJECT IS LOCATED WITHIN **LESS THAN 1 MILE** OF
HOUSTON'S BEST RESTAURANT DISTRICTS



FLOWER CHILD
McCormick & Schmick's
SEAFOOD & STEAKS
THE RUSTIC
MENDOCINO FARMS
songkran
cuisine et bar
thai kitchen

MEMORIAL PARK

MASTRO'S STEAKHOUSE
LOCAL Foods
Bloom & BEE
H BAR
WILLIE G'S SEAFOOD & STEAKS
Liberty Kitchen & OYSTERETTE
CRAFT F&B

HIGHLAND VILLAGE

Drexel House
P.F. CHANG'S ASIAN TABLE
ESCALANTE'S FINE TEX-MEX & TEQUILA
Sushi-Bar-Restaurant
Sprinkles
SWEET PARIS crêperie & wine bar

STEAK 48
THE TUCK ROOM
Le Colonial
hopdoddy BURGER BAR
MAD
LOCH BAR
Ouzo Bay
TOULOUSE

WHOLE FOODS MARKET
NORTH ITALY
Ninfa's MEXICAN RESTAURANT
rise
La Table
THE Annie CAFE & BAR
SOZO sushi & lounge

BLVD PLACE

2000
WEST LOOP SOUTH

POST OAK

UPTOWN PARK

1 MILE RADIUS

WOODWAY DR

S POST OAK LN

N POST OAK LN

610

SAN FELIPE

CHIMNEY ROCK RD

WESTHEIMER RD

POST OAK BLVD

WILLOW ROCK

Great Access

AT THE CENTER OF IT ALL



EXPLORE THE NEIGHBORHOOD

just minutes away

With retail, dining, residential and office so close, you'll never want to leave.

2
minute drive to
BLVD PLACE

3
minute drive to
THE GALLERIA

5
minute drive to
UPTOWN PARK

5
minute drive to
RIVER OAKS
DISTRICT

5
minute drive to
MEMORIAL
PARK



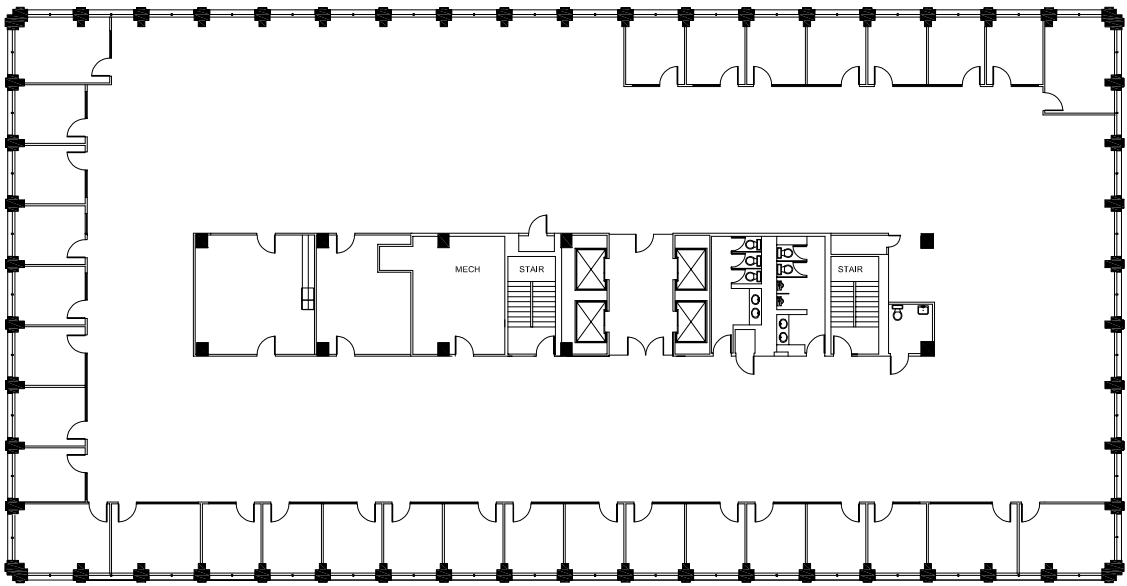
Available Space



Suite 2021	1,781 SF
Suite 1900	16,809 SF
Suite 1800	1,352 SF
Suite 1500	3,543 SF
Suite 1550	8,476 SF
Suite 1100	7,689 SF
Suite 1150	4,720 SF
Suite 900	16,691 SF
Suite 800	16,691 SF
Suite 700	16,687 SF
Suite 600	16,801 SF
Suite 500	16,832 SF
Suite 400	12,720 SF
Suite 300	16,823 SF

TYPICAL FLOOR PLAN

- » Efficient Rectangular Floor Plate
- » 16,800 Rentable Square Feet





FOR LEASING INFORMATION

PARKER BURKETT
713.407.8716
parker.burkett@transwestern.com