

# 4321 LAWEHANA STREET

HONOLULU, HI 96818



**FOR ASSIGNMENT OF LEASE**



**CUSHMAN &  
WAKEFIELD**

**ChaneyBrooks**

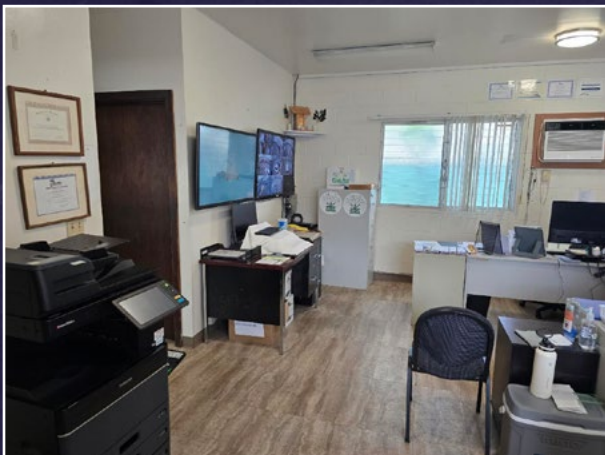


## PROPERTY DETAILS

|             |                 |
|-------------|-----------------|
| SIZE        | 21,524 SF       |
| ASKING RENT | Upon Request    |
| CAM         | TBD             |
| TERM        | Till 06/30/2034 |
| ZONING      | IMX-1           |

## PROPERTY HIGHLIGHTS

- Rare large-format yard space
- Includes office space
- Conveniently located with easy access to Nimitz Highway and the H-1
- Fenced and gated for controlled access and security



4321 LAWEHANA STREET



CUSHMAN & WAKEFIELD CHANEYBROOKS





## CONTACT US

### KOHEI HAKAMADA (B)

Senior Vice President

+1 808 382 9935

khakamada@chaneybrooks.com

RB-20101

### IAN MONTGOMERY (S)

Real Estate Advisor

+1 808 421 8778

imontgomery@chaneybrooks.com

RS-85843



**CUSHMAN &  
WAKEFIELD**

**ChaneyBrooks**

1440 Kapiolani Boulevard Suite 1010

Honolulu, Hawaii 96814

Main +1 808 544 1600

Fax +1 808 544 9574

RB-17805

Independently Owned and Operated / A Member of the Cushman & Wakefield Alliance

©2025 Cushman & Wakefield ChaneyBrooks. All rights reserved. The information contained in this communication is strictly confidential. This information has been obtained from sources believed to be reliable but has not been verified. NO WARRANTY OR REPRESENTATION, EXPRESS OR IMPLIED, IS MADE AS TO THE CONDITION OF THE PROPERTY (OR PROPERTIES) REFERENCED HEREIN OR AS TO THE ACCURACY OR COMPLETENESS OF THE INFORMATION CONTAINED HEREIN, AND SAME IS SUBMITTED SUBJECT TO ERRORS, OMISSIONS, CHANGE OF PRICE, RENTAL OR OTHER CONDITIONS, WITHDRAWAL WITHOUT NOTICE, AND TO ANY SPECIAL LISTING CONDITIONS IMPOSED BY THE PROPERTY OWNER(S). ANY PROJECTIONS, OPINIONS OR ESTIMATES ARE SUBJECT TO UNCERTAINTY AND DO NOT SIGNIFY CURRENT OR FUTURE PROPERTY PERFORMANCE.