

# GATEWAY MEDICAL SUITE

8697 4th St N, St Petersburg, FL 33702



## PROPERTY DESCRIPTION

Turn-Key Medical Office Space Available – 8697 4th St N

Located in the prestigious Gateway Executive Center, this turnkey medical office offers a bright, modern, and functional space perfect for healthcare professionals.

### Nearby Amenities:

Café Cibo – A local favorite offering authentic Italian cuisine in an intimate, casual setting, located within the same complex.

Sunshine City Tavern – A new casual eatery by celebrated local chef Ted Dorsey, opening soon at 4351 4th St N.

### Proximity to Key Areas:

Downtown St. Petersburg – Approximately 4 miles (~10 minutes)

Tampa – Approximately 20 miles (~20 mins.), accessible via I-275, providing additional business and cultural attractions.

This beautifully designed medical office is ideal for physicians, specialists, or wellness practitioners looking for a move-in-ready space in a thriving business hub.

## PROPERTY HIGHLIGHTS

- Private Exam Rooms
- Spacious, Open Reception Area
- On-Site Lab
- Ample Parking
- Abundant Natural Light
- Prime Location – High-traffic area with close proximity to Downtown St. Pete and Tampa

## OFFERING SUMMARY

Lease Rate:	\$30.00 SF/yr (NNN)
Available SF:	2,000 SF
Lot Size:	20,174 SF
Building Size:	3,897 SF

We obtained the information above from sources we believe to be reliable. However, we have not verified its accuracy and make no guarantee, warranty or representation about it. It is submitted subject to the possibility of errors, omissions, change of price, rental or other conditions, prior sale, lease or financing, or withdrawal without notice. We include projections, opinions, assumptions or estimates for example only, and they may not represent current or future performance of the property. You and your tax and legal advisors should conduct your own investigation of the property and transaction.

### JAKE WOLLMAN

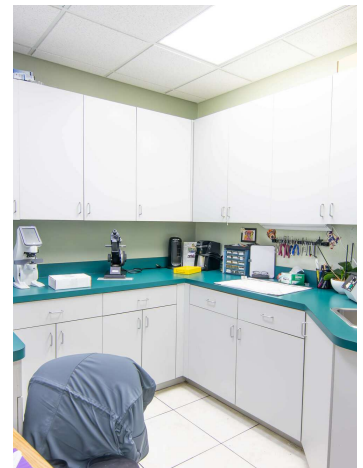
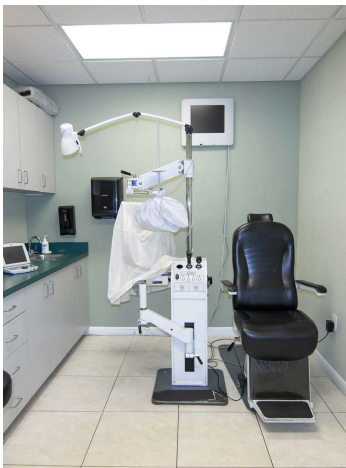
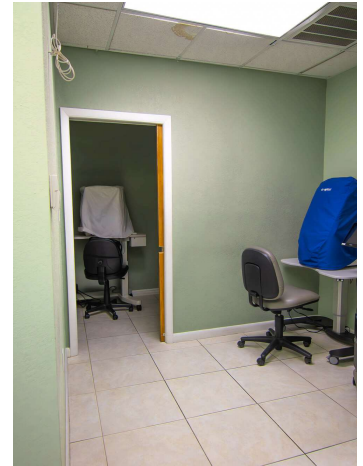
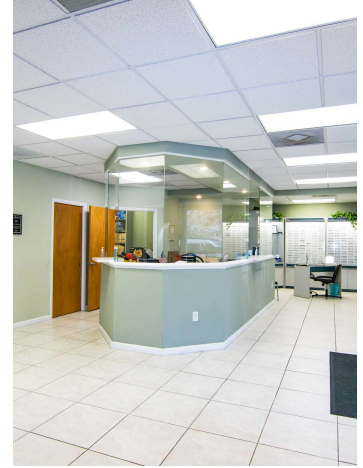
CRE Advisor  
O: 727.280.5592  
C: 239.272.7006  
jwollman@kwcommercial.com  
FL #SL3237174

**KW COMMERCIAL**  
360 Central Ave. #600  
St Petersburg, FL 33701

**OFFICE FOR LEASE**

# GATEWAY MEDICAL SUITE

8697 4th St N, St Petersburg, FL 33702



We obtained the information above from sources we believe to be reliable. However, we have not verified its accuracy and make no guarantee, warranty or representation about it. It is submitted subject to the possibility of errors, omissions, change of price, rental or other conditions, prior sale, lease or financing, or withdrawal without notice. We include projections, opinions, assumptions or estimates for example only, and they may not represent current or future performance of the property. You and your tax and legal advisors should conduct your own investigation of the property and transaction.

## JAKE WOLLMAN

CRE Advisor  
O: 727.280.5592  
C: 239.272.7006  
jwollman@kwcommercial.com  
FL #SL3237174

**KW COMMERCIAL**  
360 Central Ave. #600  
St Petersburg, FL 33701

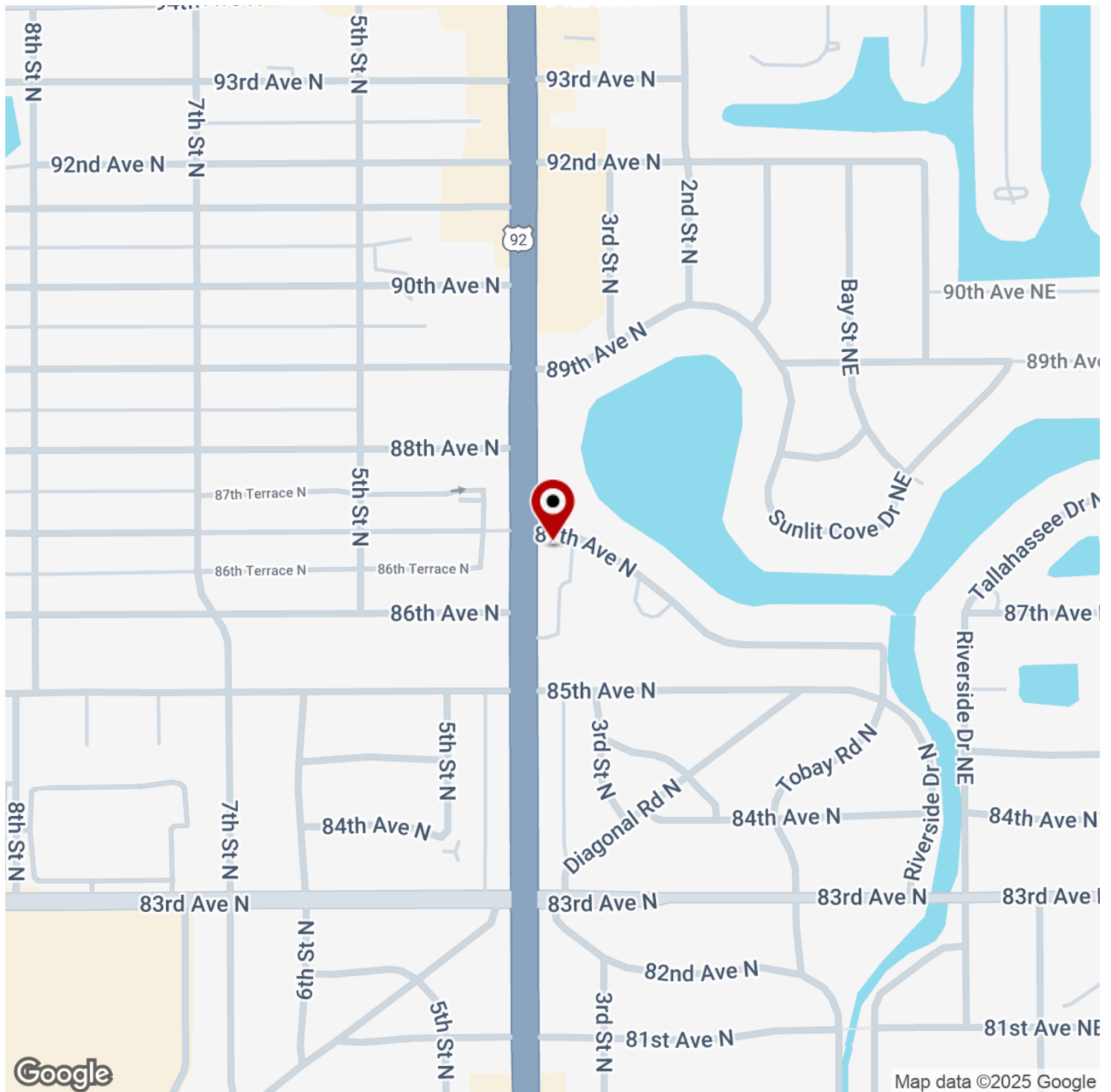
**Each Office Independently Owned and Operated**



OFFICE FOR LEASE

# GATEWAY MEDICAL SUITE

8697 4th St N, St Petersburg, FL 33702



We obtained the information above from sources we believe to be reliable. However, we have not verified its accuracy and make no guarantee, warranty or representation about it. It is submitted subject to the possibility of errors, omissions, change of price, rental or other conditions, prior sale, lease or financing, or withdrawal without notice. We include projections, opinions, assumptions or estimates for example only, and they may not represent current or future performance of the property. You and your tax and legal advisors should conduct your own investigation of the property and transaction.

## JAKE WOLLMAN

CRE Advisor  
O: 727.280.5592  
C: 239.272.7006  
jwollman@kwcommercial.com  
FL #SL3237174

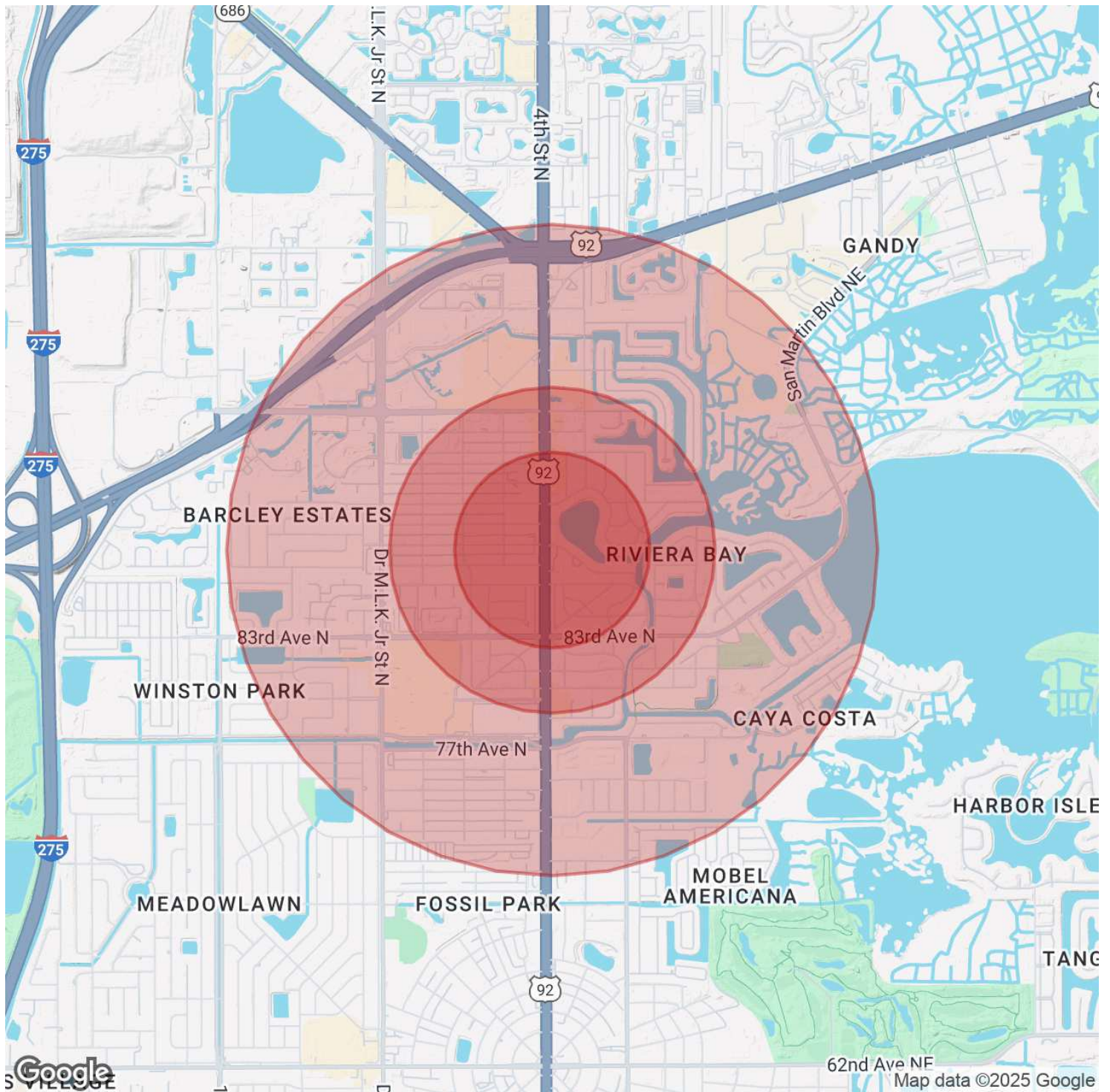
**KW COMMERCIAL**  
360 Central Ave. #600  
St Petersburg, FL 33701

Each Office Independently Owned and Operated

OFFICE FOR LEASE

# GATEWAY MEDICAL SUITE

8697 4th St N, St Petersburg, FL 33702



We obtained the information above from sources we believe to be reliable. However, we have not verified its accuracy and make no guarantee, warranty or representation about it. It is submitted subject to the possibility of errors, omissions, change of price, rental or other conditions, prior sale, lease or financing, or withdrawal without notice. We include projections, opinions, assumptions or estimates for example only, and they may not represent current or future performance of the property. You and your tax and legal advisors should conduct your own investigation of the property and transaction.

## JAKE WOLLMAN

CRE Advisor  
O: 727.280.5592  
C: 239.272.7006  
jwollman@kwcommercial.com  
FL #SL3237174

**KW COMMERCIAL**  
360 Central Ave. #600  
St Petersburg, FL 33701

Each Office Independently Owned and Operated