



RETAIL SPACE FOR LEASE
PRIDE CENTER - 22950 VICTORY BOULEVARD
WOODLAND HILLS, CA 91367

11,707 SF

For Leasing Information, please contact:

LESLIE J. MAYER

Executive Managing Director

Retail Services

CA License 00862783

10520 Constellation Blvd, #2200

Los Angeles, CA 90067

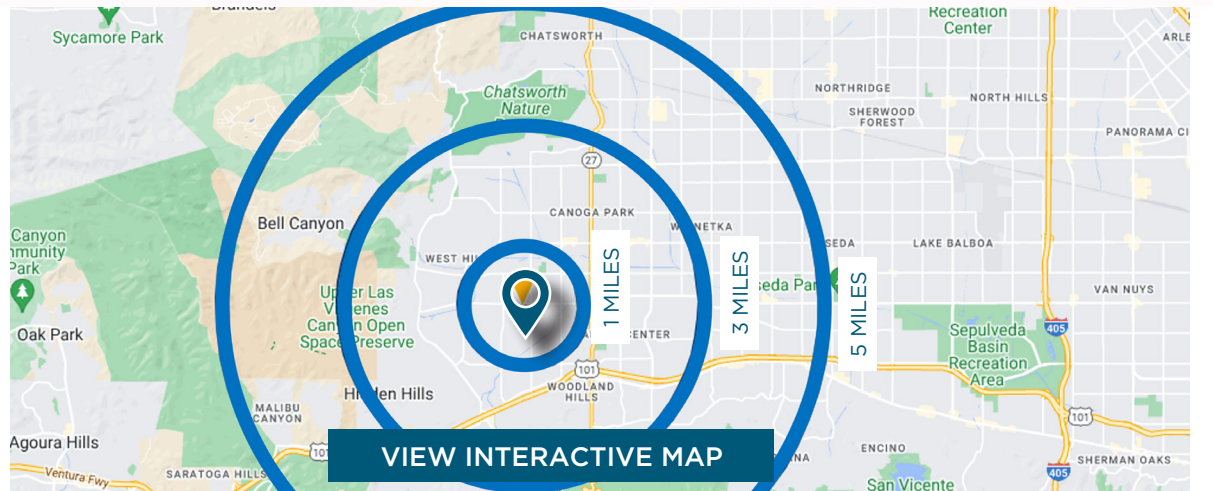
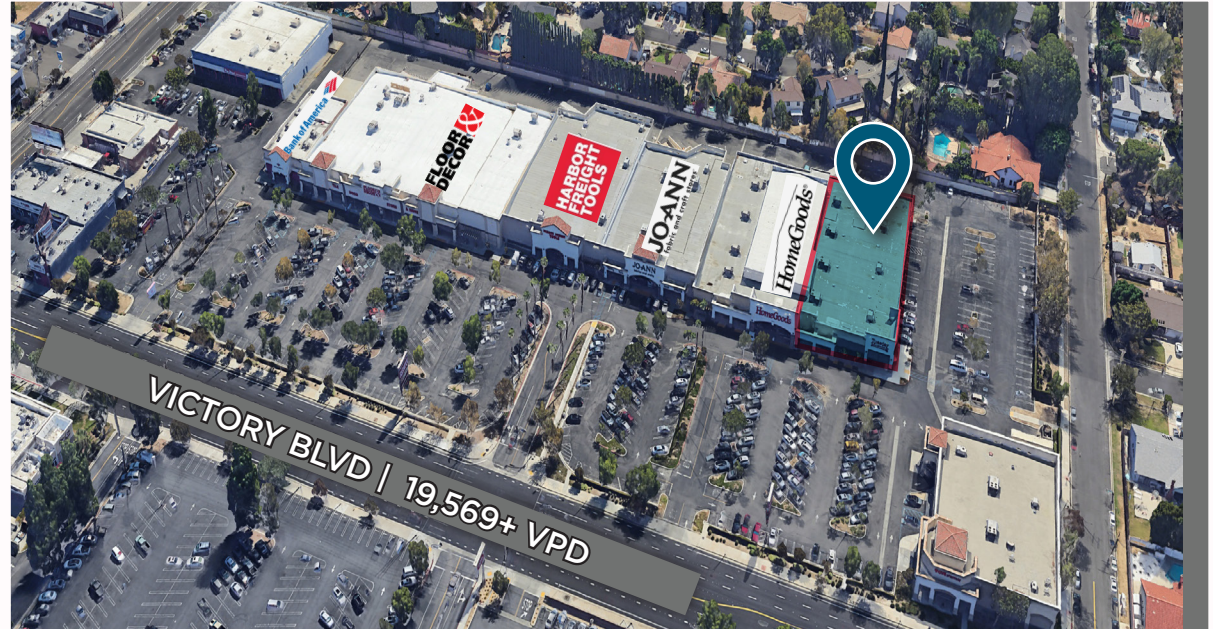
Direct: +1 310 595 2223

leslie.mayer@cushwake.com



PROPERTY HIGHLIGHTS

- Former Tuesday Morning Store
- Highly Visible End-Cap Space
- Signage Parapet
- Abundant Parking
- Pylon Signage Available
- Excellent Co-Tenancy
- Available January 2024



SOUTHERN CALIFORNIA RETAIL SERVICES

LESLIE J. MAYER
leslie.mayer@cushwake.com
+1 310 595 2223
CA Lic. #00862783



INTERIOR PICTURES



SOUTHERN CALIFORNIA RETAIL SERVICES

LESLIE J. MAYER
leslie.mayer@cushwake.com
+1 310 595 2223
CA Lic. #00862783



EXTERIOR PICTURES

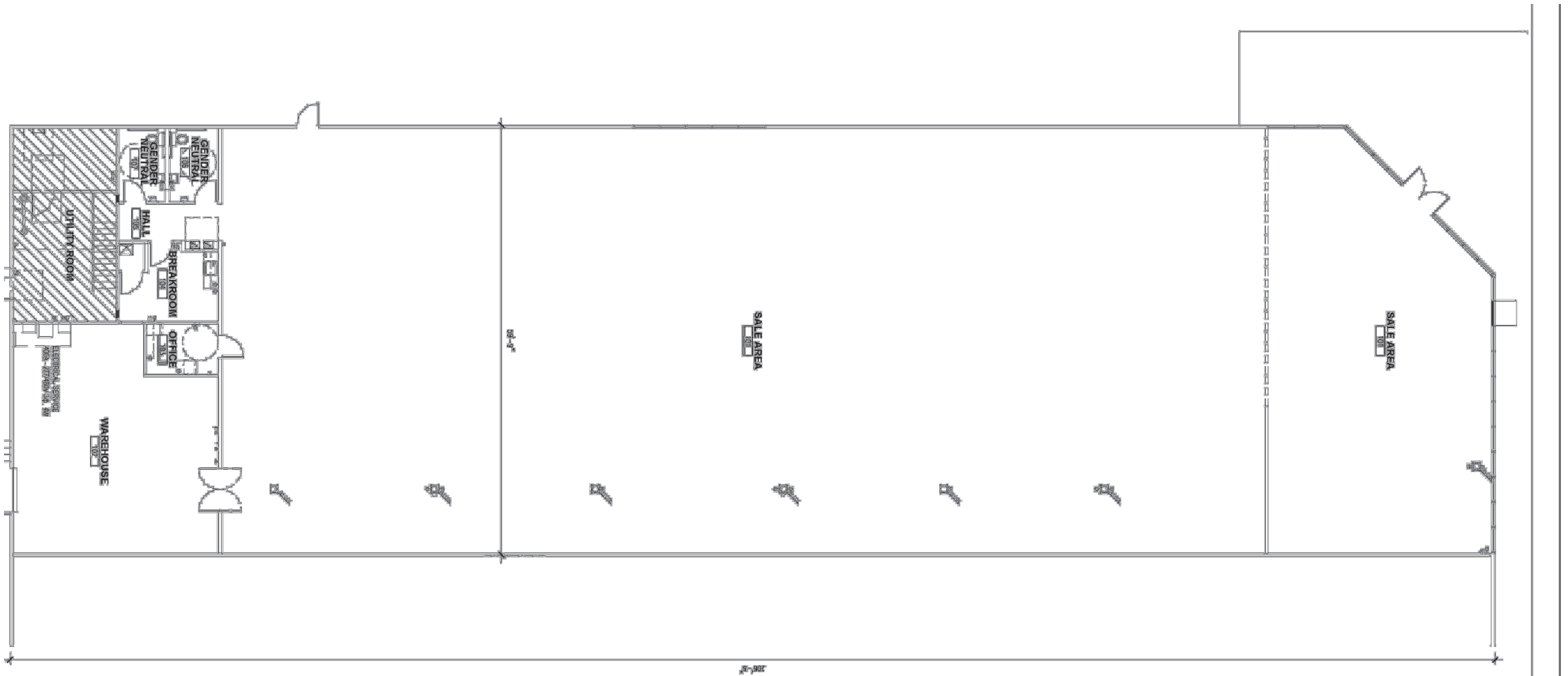


SOUTHERN CALIFORNIA RETAIL SERVICES

LESLIE J. MAYER
leslie.mayer@cushwake.com
+1 310 595 2223
CA Lic. #00862783



LEASABLE FLOOR AREA



SOUTHERN CALIFORNIA RETAIL SERVICES

LESLIE J. MAYER
leslie.mayer@cushwake.com
+1 310 595 2223
CA Lic. #00862783



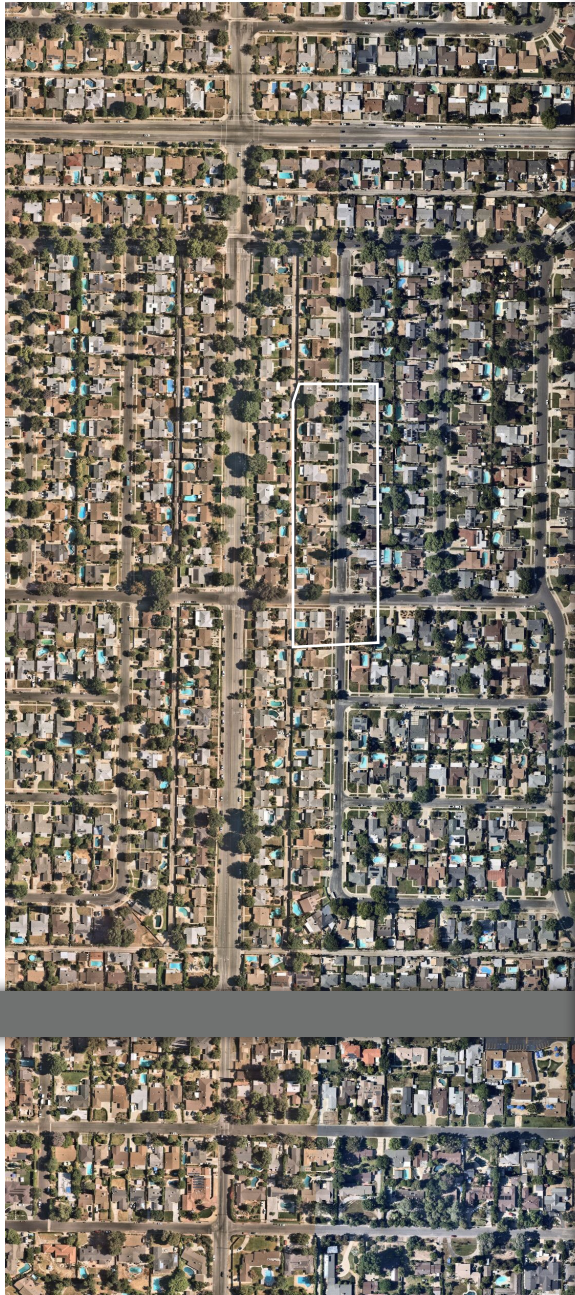
AREA MAP



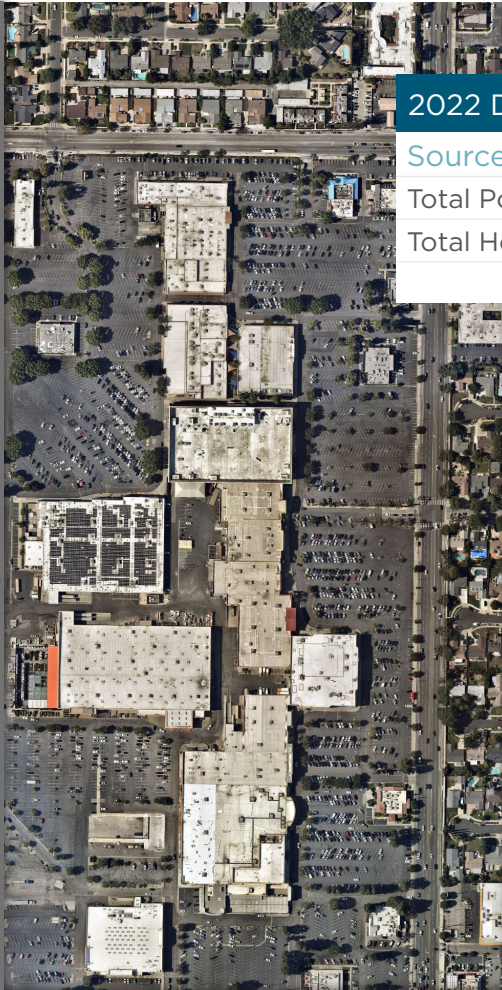
SOUTHERN CALIFORNIA RETAIL SERVICES

LESLIE J. MAYER
 leslie.mayer@cushwake.com
 +1 310 595 2223
 CA Lic. #00862783



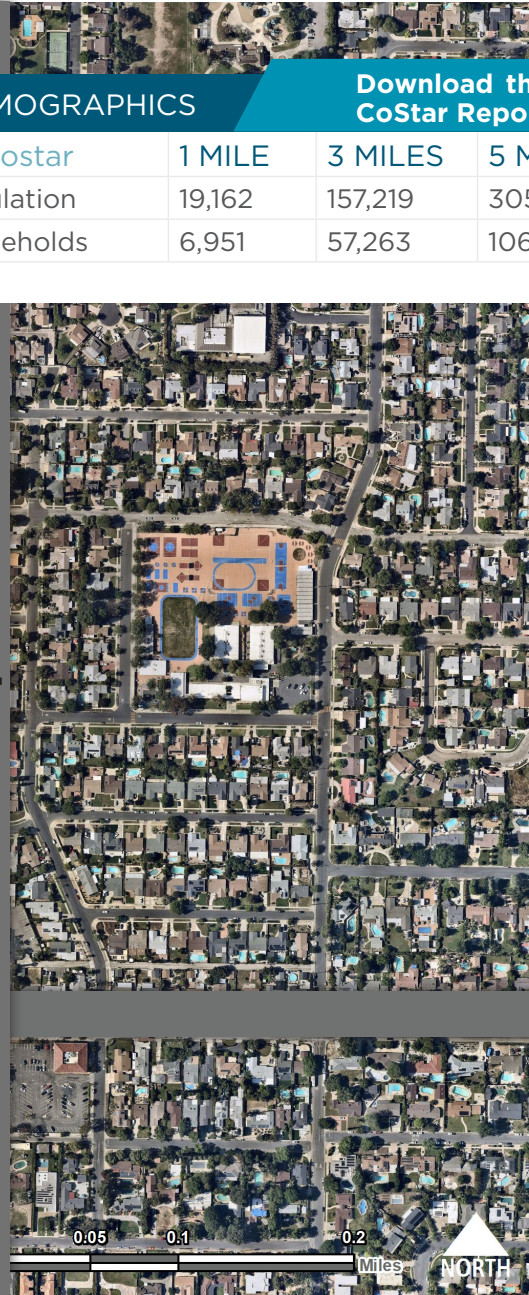


S. EUCLID ST. | 39,225+ VPD



FALLBROOK AVE | 33,475+ VPD

VICTORY BLVD | 19,569+ VPD



2022 DEMOGRAPHICS

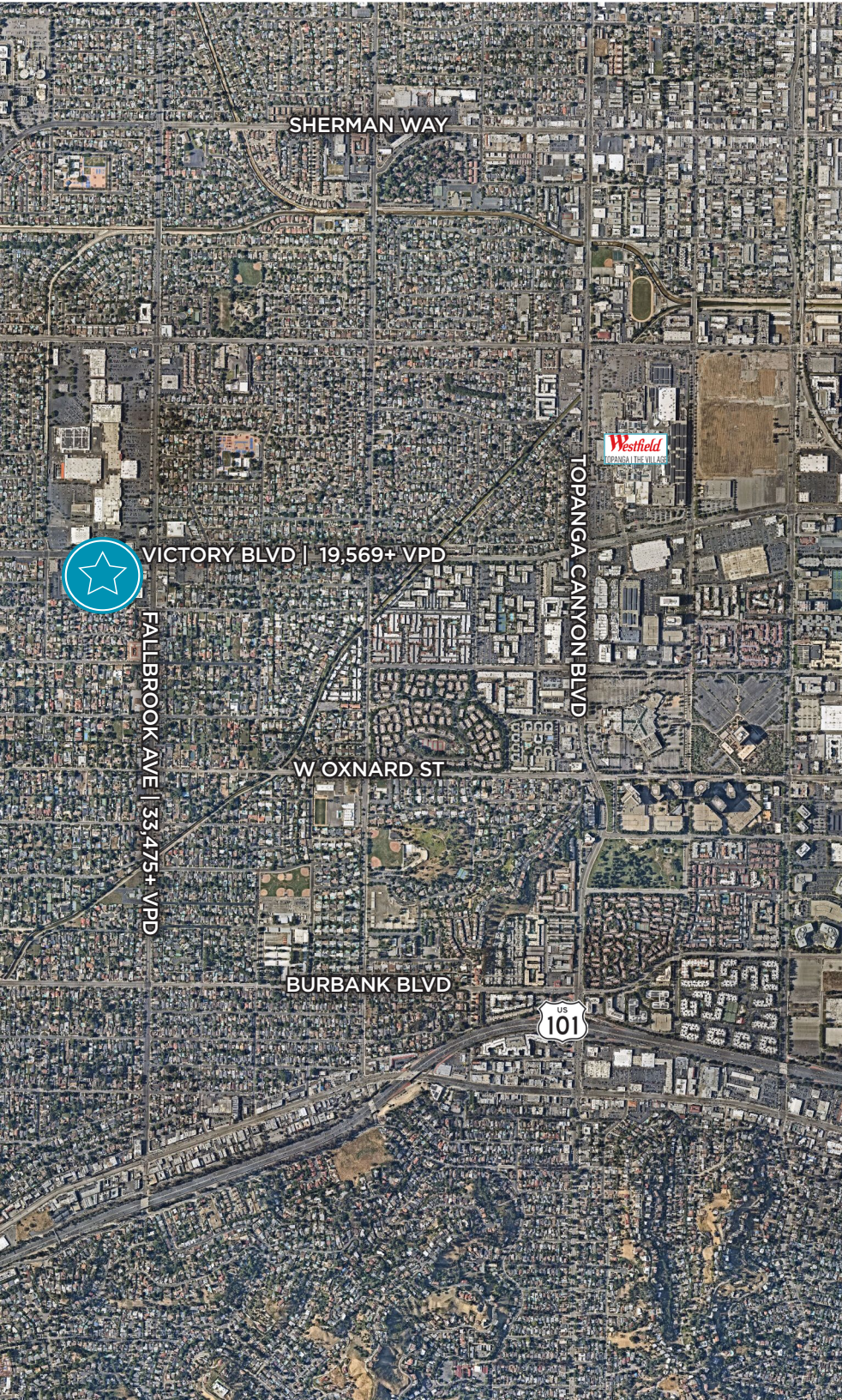
Download the CoStar Report

| Source: Costar | 1 MILE | 3 MILES | 5 MILES |
|------------------|--------|---------|---------|
| Total Population | 19,162 | 157,219 | 305,170 |
| Total Households | 6,951 | 57,263 | 106,807 |

SOUTHERN CALIFORNIA RETAIL SERVICES

LESLIE J. MAYER
 leslie.mayer@cushwake.com
 +1 310 595 2223
 CA Lic. #00862783





22950 VICTORY BLVD
WOODLAND HILLS, CA 91367

Leslie J. Mayer
Executive Managing Director

Retail Services
CA License 00862783
10520 Constellation Blvd, #2200
Los Angeles, CA 90067
Direct: +1 310 595 2223
Mobile: +1 310 600 4118
leslie.mayer@cushwake.com



10520 Constellation Boulevard, Suite 2200 / Los Angeles, CA 90067 | USA / cushmanwakefield.com

©2023 Cushman & Wakefield. All rights reserved. The material in this presentation has been prepared solely for information purposes, and is strictly confidential. Any disclosure, use, copying or circulation of this presentation (or the information contained within it) is strictly prohibited, unless you have obtained Cushman & Wakefield's prior written consent. The views expressed in this presentation are the views of the author and do not necessarily reflect the views of Cushman & Wakefield. Neither this presentation nor any part of it shall form the basis of, or be relied upon in connection with any offer, or act as an inducement to enter into any contract or commitment whatsoever. NO REPRESENTATION OR WARRANTY IS GIVEN, EXPRESS OR IMPLIED, AS TO THE ACCURACY OF THE INFORMATION CONTAINED WITHIN THIS PRESENTATION, AND CUSHMAN & WAKEFIELD IS UNDER NO OBLIGATION TO SUBSEQUENTLY CORRECT IT IN THE EVENT OF ERRORS.