

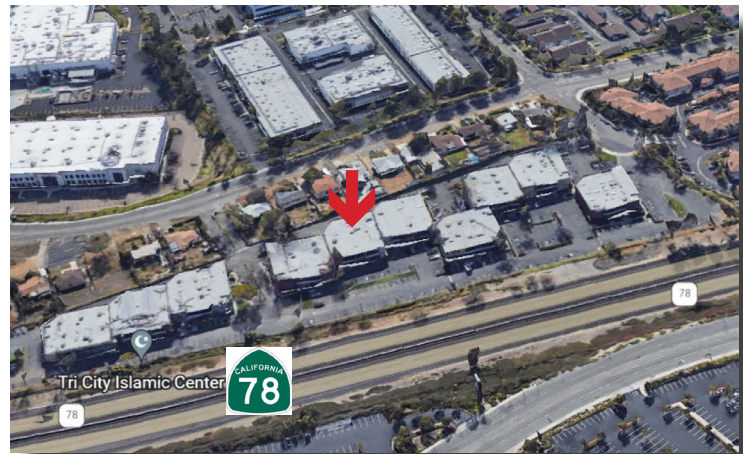
# FOR SALE OR LEASE

## 2135 INDUSTRIAL COURT, VISTA, CA



### PROPERTY DETAILS

- An Approximate 11,278 SF Industrial Building
- Approximate 3,947 SF Office
- 20' Clear Height
- Grade Loading to Warehouse
- Heavy Power
- Terrific Signage & Visibility
- Tour by Appointment Only



**SALE PRICE - \$2,950,000**

**LEASE RATE - \$11,000 NNN PER MONTH**

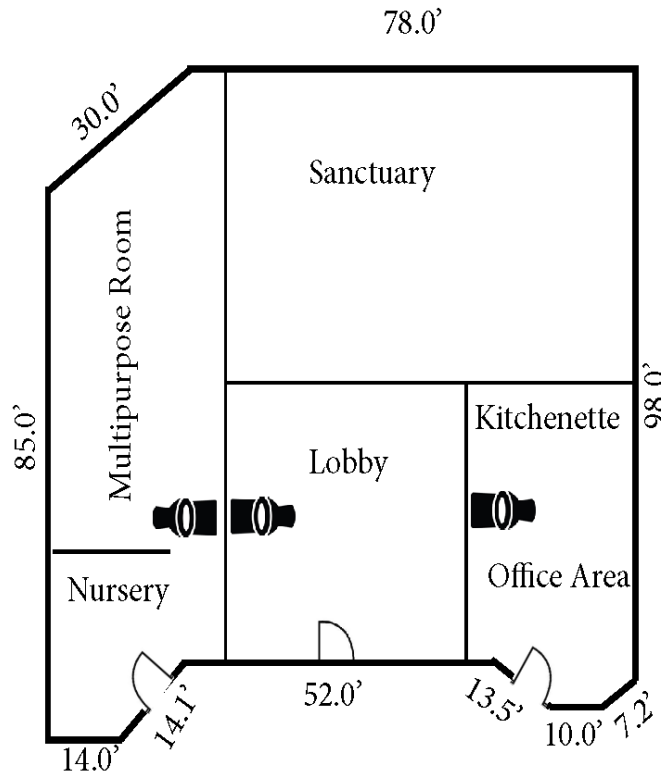
**SAN DIEGO COMMERCIAL**

**TIM CLEPPER - PRESIDENT**  
380 S. MELROSE DR., SUITE 367, VISTA, CA 92081  
TIM@SANDIEGOCOMMERCIAL.INFO  
WWW.SANDIEGOCOMMERCIAL.INFO  
CA BROKER LICENSE: 01354303  
C: 760.402.4846 T: 760.599.4200 F: 760.599.4344

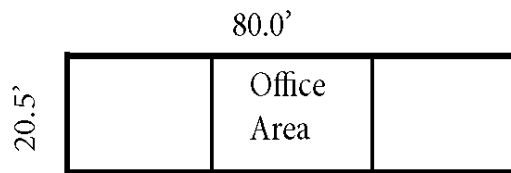
# FOR SALE OR LEASE

## 2135 INDUSTRIAL COURT, VISTA, CA

First Floor



Second Floor



**SALE PRICE - \$2,950,000**

**LEASE RATE - \$11,000 NNN PER MONTH**

**SAN DIEGO COMMERCIAL**

**TIM CLEPPER - PRESIDENT**  
380 S. MELROSE DR., SUITE 367, VISTA, CA 92081  
TIM@SANDIEGOCOMMERCIAL.INFO  
WWW.SANDIEGOCOMMERCIAL.INFO  
CA BROKER LICENSE: 01354303  
C: 760.402.4846 T: 760.599.4200 F: 760.599.4344