

# 909 HIOAKS ROAD

Richmond, Virginia 23225

FOR LEASE

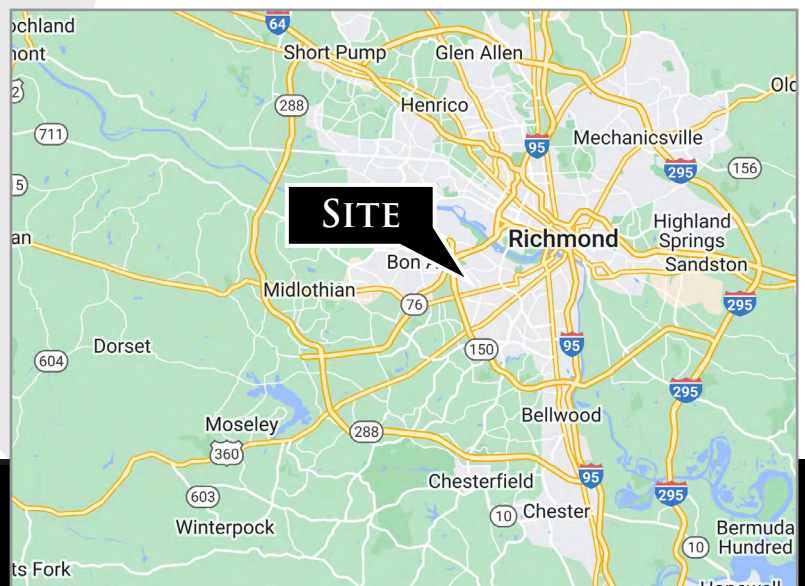


## MEDICAL / OFFICE SPACE AVAILABLE IN RICHMOND

### PROPERTY HIGHLIGHTS:

- ▶ 1,375 SF space available (Suite L), former medical use
- ▶ Adjacent to HCA Chippenham Hospital
- ▶ Professional General/Medical Office Building
- ▶ 12,837+/- SF Building on 1.06 acre lot, Zoned RO-1
- ▶ Conveniently located just off Chippenham and Powhite Parkway
- ▶ Proximate to Midlothian Turnpike & Hull Street
- ▶ Contact broker for pricing

Demographics	1 Mile	3 Miles	5 Miles
Population	11,229	73,114	223,011
Households	5,060	30,552	92,691
Average Household Income	\$50,213	\$72,208	\$82,357



**DOMINION  
COMMERCIAL**

**Nathan S. Jones, IV**

nathan.jones@domcommercial.com

855.530.2300

[domcommercial.com](http://domcommercial.com)

# 909 HIOAKS ROAD

Richmond, Virginia 23225

FOR LEASE



**Nathan S. Jones, IV**  
nathan.jones@domcommercial.com  
855.530.2300

[domcommercial.com](http://domcommercial.com)

# 909 HIOAKS ROAD

Richmond, Virginia 23225

FOR LEASE



**Nathan S. Jones, IV**  
nathan.jones@domcommercial.com  
855.530.2300

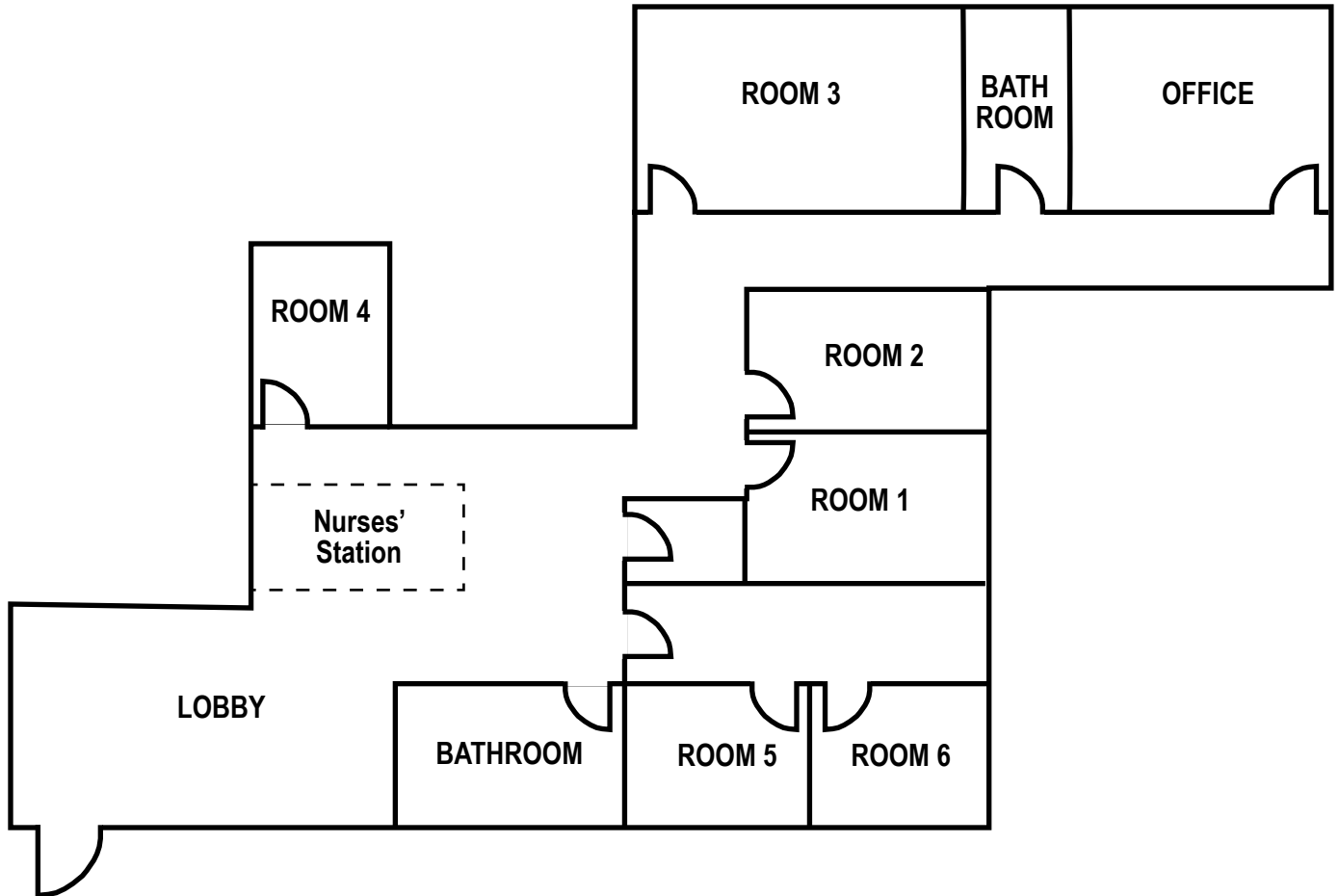
[domcommercial.com](http://domcommercial.com)

# 909 HIOAKS ROAD

Richmond, Virginia 23225

FOR LEASE

## SUITE L



**Nathan S. Jones, IV**  
nathan.jones@domcommercial.com  
855.530.2300

[domcommercial.com](http://domcommercial.com)