

FOR SALE OR LEASE

# 10,416 SF OFFICE BUILDING WITH PRIME FREEWAY FRONTAGE

1327 DEL NORTE RD, CAMARILLO, CA 93010



Available  
805.626.715

AVAILABLE  
805.626.715



US HWY 101  
151,022 VPD

## Property Overview

### PROPERTY DETAILS

SALE PRICE	\$2,985,000
PRICE / SF	\$287/SF
LEASE RATE	\$1.85/SF/NNN
BUILDING SIZE	Total: 10,416 SF 1st Floor: 5,208 SF 2nd Floor: 5,208 SF
LOT SIZE	0.95 AC
YEAR BUILT / RENOVATED	1990
PARKING	42 Spaces + Abundant Street Parking
PARKING RATIO	4/1,000 PSF

### PROPERTY FEATURES

- Prime 101 Freeway Frontage
- Excellent Visibility From Eastbound & Westbound
- Highly Flexible & Divisible (Upstairs / Downstairs)
- Multiple Executive Offices
- Abundant Free Parking Nearby



## *Allowable Uses*

### **ZONING: CPD VENTURA**

In the City of Camarillo, the Commercial Planned Development (CPD) Zone is designed to facilitate innovative and cohesive commercial projects that integrate environmental planning, unique design, and unified architectural control. This zoning is particularly suited for areas requiring revitalization or for developments that don't align with traditional commercial zones.

Art Studio

Funeral Parlor

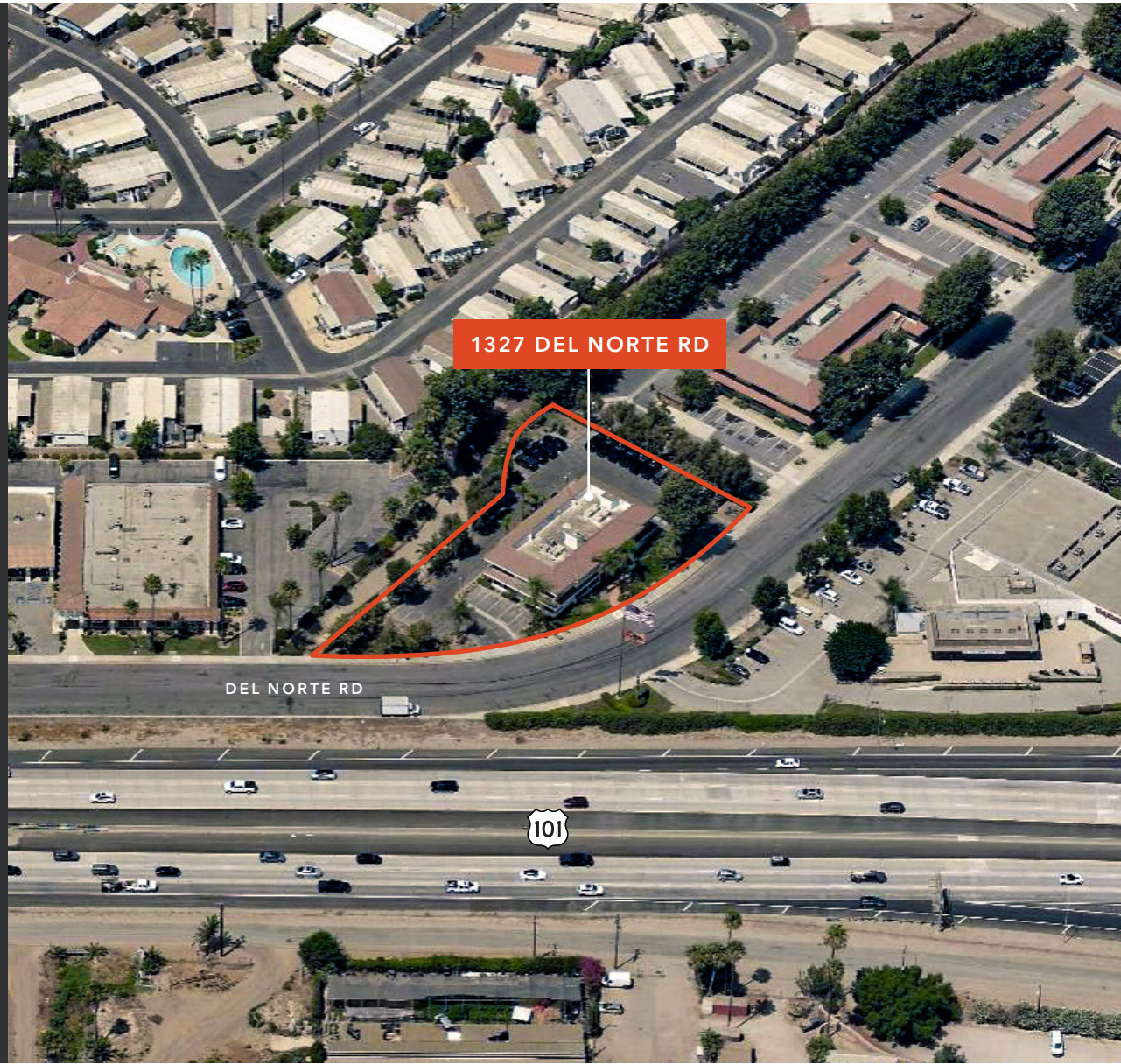
Interior Decorating

Newspaper

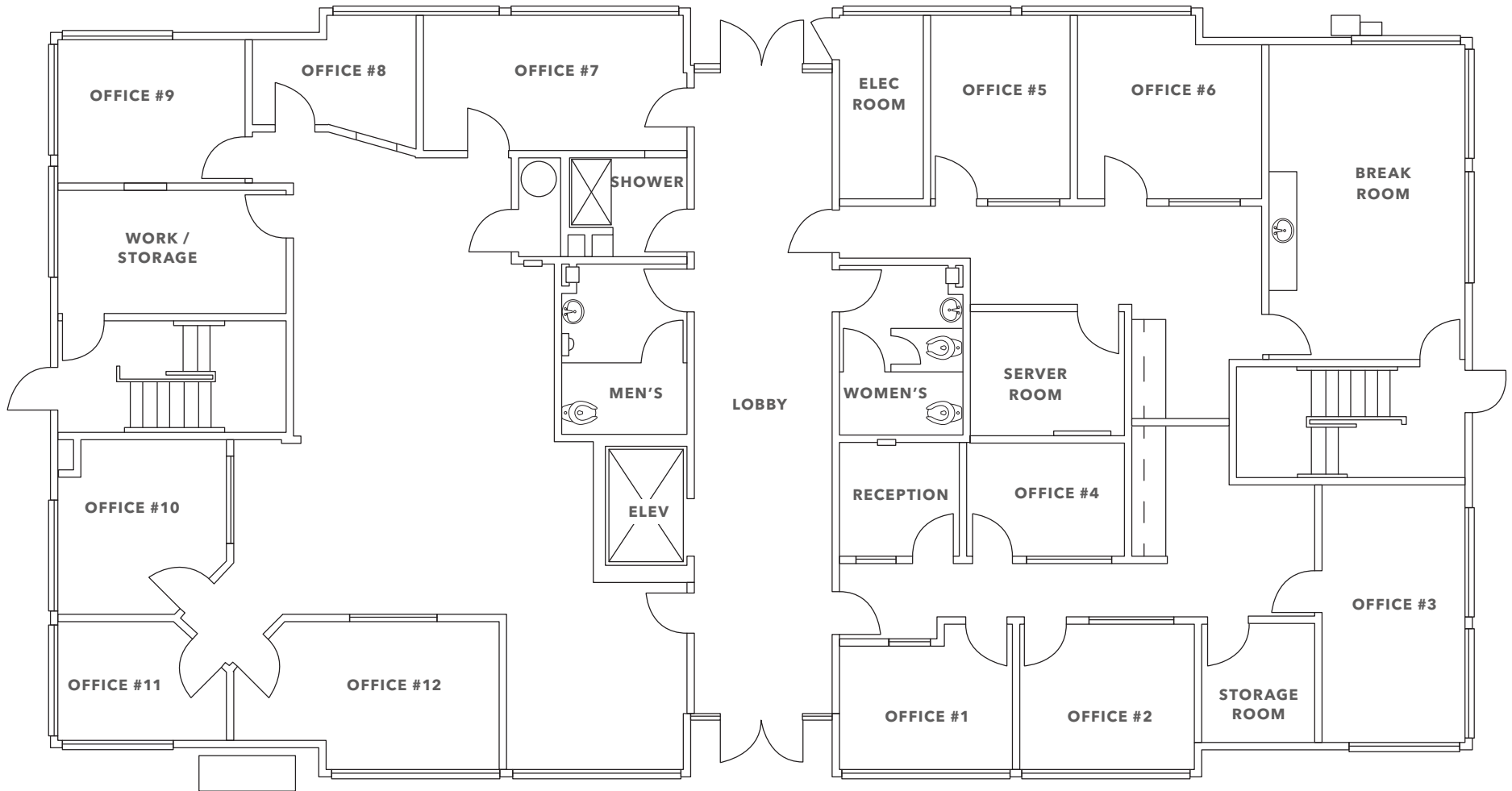
Printing Shop

Office Uses: CPA, Lawyer, Medical, Mortgage/  
Finance, Real Estate, Traditional

→ [READ MORE](#)

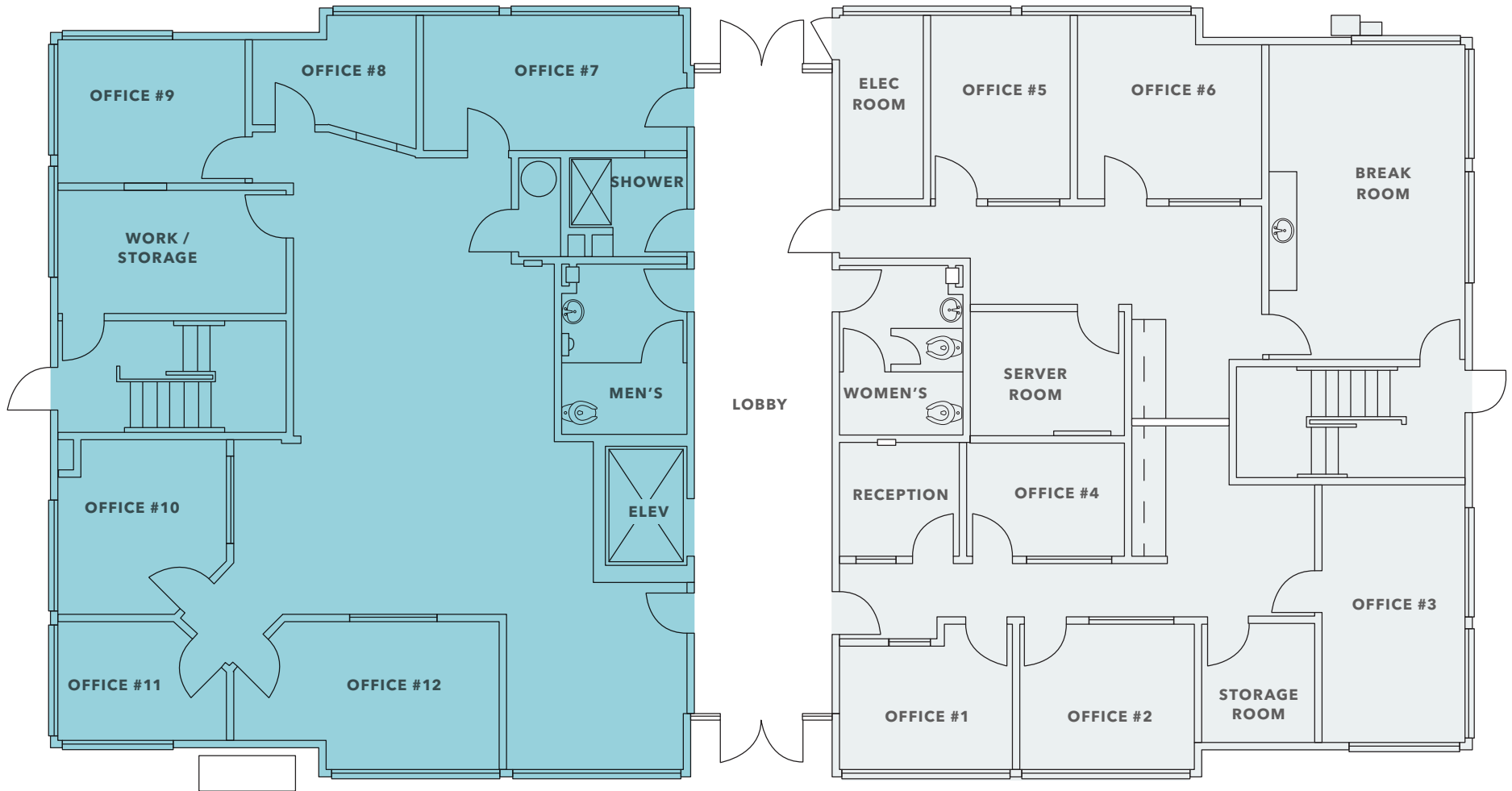


# FIRST FLOOR PLAN



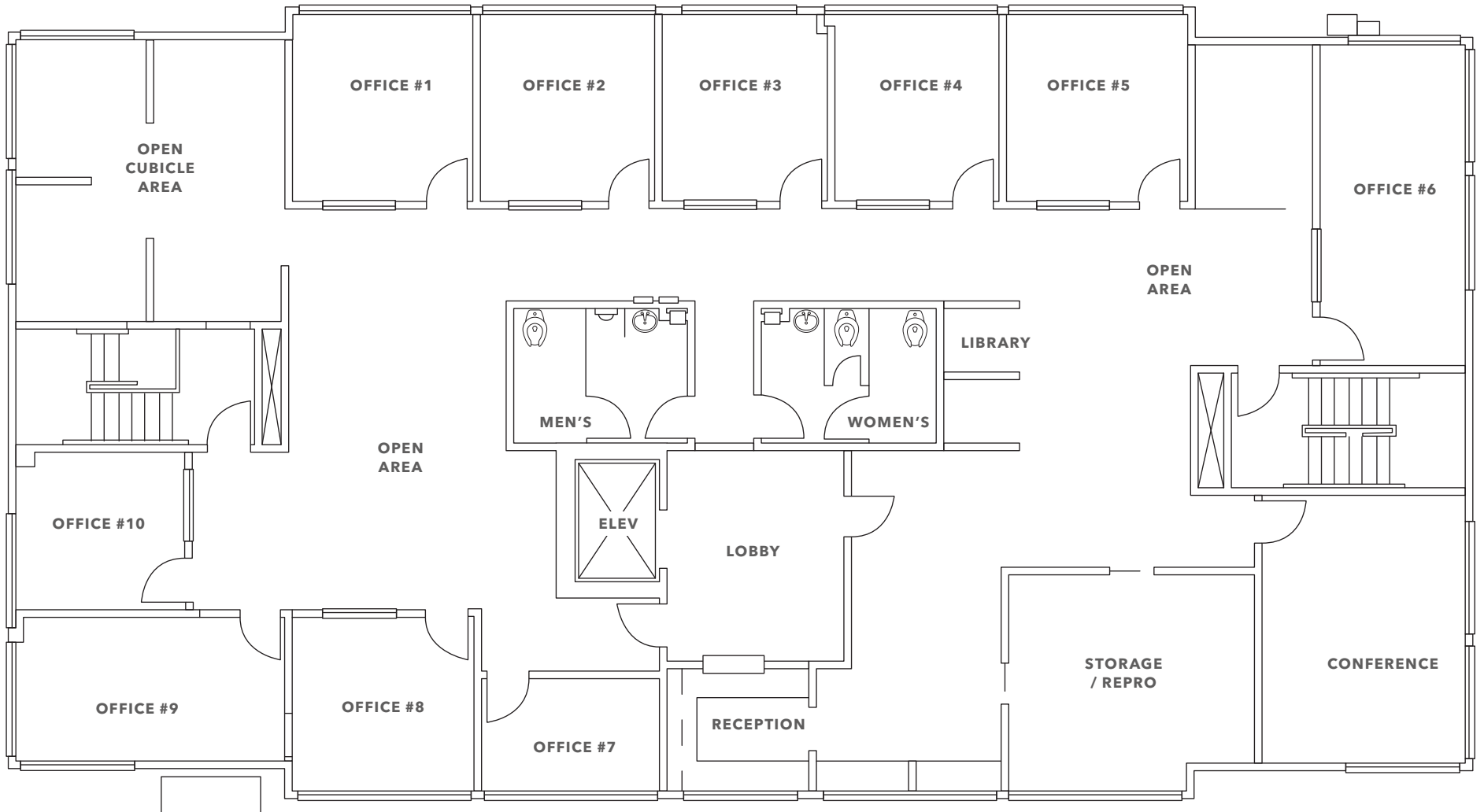
Not to scale. Can be subdivided into 2 separate suites on 1st floor.

# POTENTIAL SUBDIVIDED FLOOR PLAN



Not to scale. Can be subdivided into 2 separate suites on 1st floor.

# SECOND FLOOR PLAN



Not to scale. Can potentially be used as a separate 3rd suite.



1327 DEL NORTE RD









1327 DEL NORTE RD

# CONCEPTUAL RENDERINGS

IMAGES ENHANCED USING AI



FOR SALE OR LEASE

KIDDER MATHEWS

# CITY OF CAMARILLO CURRENT DEVELOPMENTS

Name	Type	Notes
01 Lennar at Cortona	Residential	159 SFH
02 Airport North Specific Plan	Industrial	Auto dealer & industrial buildings, 718k SF on 47 AC
03 Amara Shopping Center	Retail	491k SF shopping center on 44.84 AC
04 Costco Wholesale	Retail	160,000 SF retail warehouse + 32-pump gas station on 27 AC
05 101 Logistics Center	Industrial	700k SF industrial across 4 buildings on ±40 AC

1327 DEL NORTE RD



01



02

03

04

05



1327 DEL NORTE RD

# CAMARILLO, CA

*Camarillo, located in Ventura County, is a well-planned suburban community known for its temperate climate, scenic beauty, and balance between residential tranquility and economic activity.*

The city is characterized by a mix of single-story office parks, mid-sized business complexes, and government facilities, reflecting its professional, small-business-friendly environment. With a strong emphasis on quality of life and local services, Camarillo attracts a variety of tenants, including healthcare providers, legal services, financial institutions, and tech firms seeking an alternative to the higher-cost Los Angeles market.

The city's main commercial corridors, including Daily Drive and Ventura Boulevard, feature professional offices adjacent to retail centers and dining options such as Lure Fish House and Manhattan of Camarillo. Local

businesses benefit from nearby amenities like the Camarillo Premium Outlets and recreational offerings including the Camarillo Ranch and nearby hiking trails in the Santa Monica Mountains.

Conveniently positioned along the US-101 freeway and serviced by regional rail via Metrolink, Camarillo offers excellent connectivity to both Greater Los Angeles and Santa Barbara counties. Continued investment in infrastructure, fiber broadband, and business incentives make Camarillo an appealing location for small to midsize office users seeking affordability, lifestyle, and long-term growth potential in Southern California.

FOR SALE OR LEASE

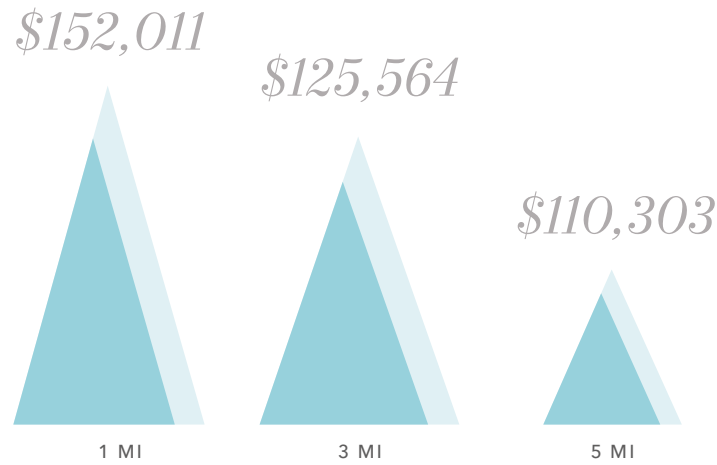
KIDDER MATHEWS

# DEMOGRAPHICS

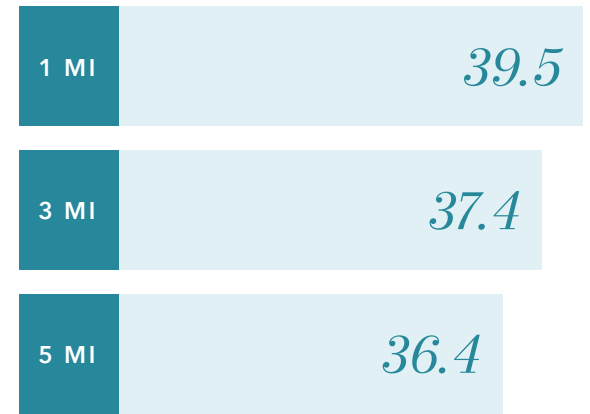
## POPULATION



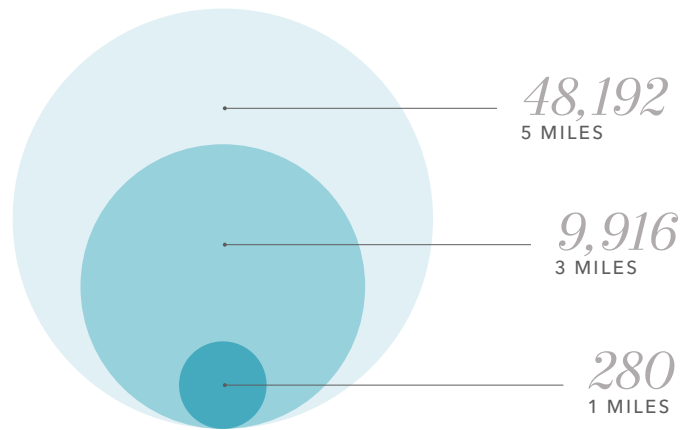
## AVERAGE HOUSEHOLD INCOME



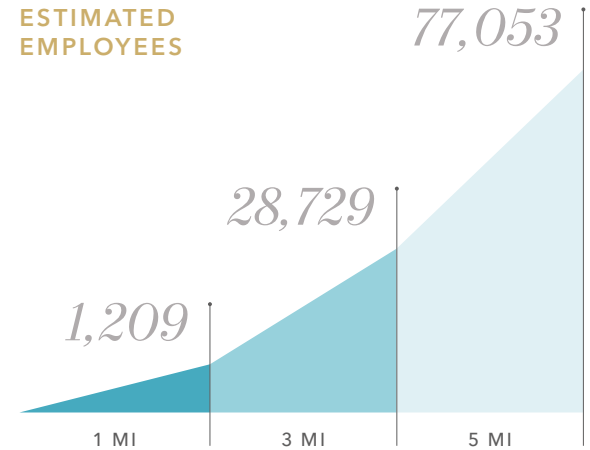
## MEDIAN AGE



## ESTIMATED HOUSEHOLDS

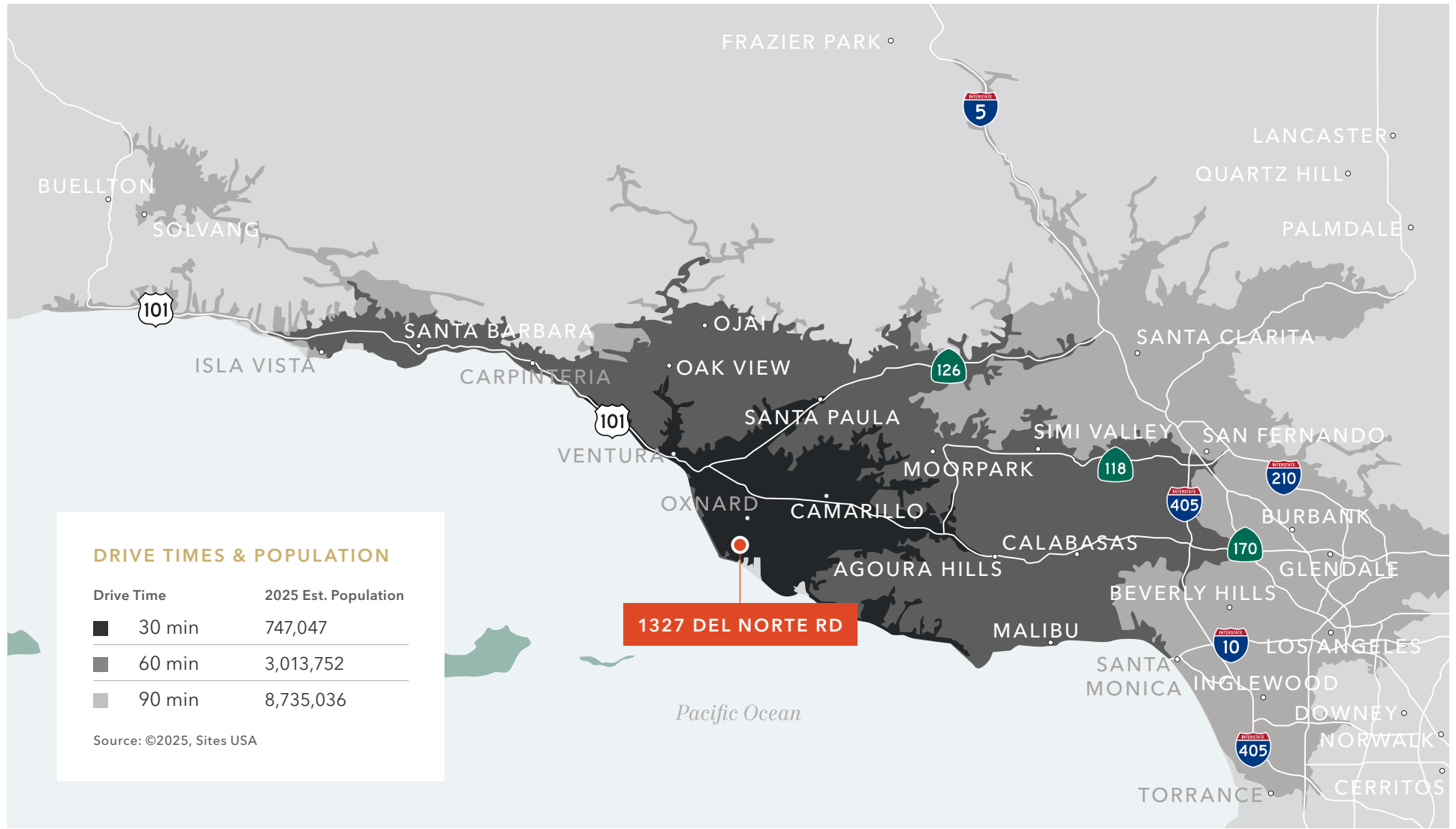


## ESTIMATED EMPLOYEES



Data Source: ©2023, Sites USA

# DRIVE TIME MAP





## 1327 DEL NORTE RD

*Exclusively  
Listed By*

**JEFFREY M. CROCKER**  
805.626.6550  
jeffrey.crocker@kidder.com  
LIC N° 01457097

**BENTLEY MCKEAN, CCIM**  
805.626.7120  
bentley.mckean@kidder.com  
LIC N° 02080641

**KIDDER.COM**

This information supplied herein is from sources we deem reliable. It is provided without any representation, warranty, or guarantee, expressed or implied as to its accuracy. Prospective Buyer or Tenant should conduct an independent investigation and verification of all matters deemed to be material, including, but not limited to, statements of income and expenses. Consult your attorney, accountant, or other professional advisor. All Kidder Mathews designs are the sole property of Kidder Mathews. Branded materials and layouts are not authorized for use by any other firm or person.

