

4930 Buttermilk Hollow Road West Mifflin, PA 15122

Approximately 110,000 Square Foot Manufacturing Building on 6.7 Acres of Land



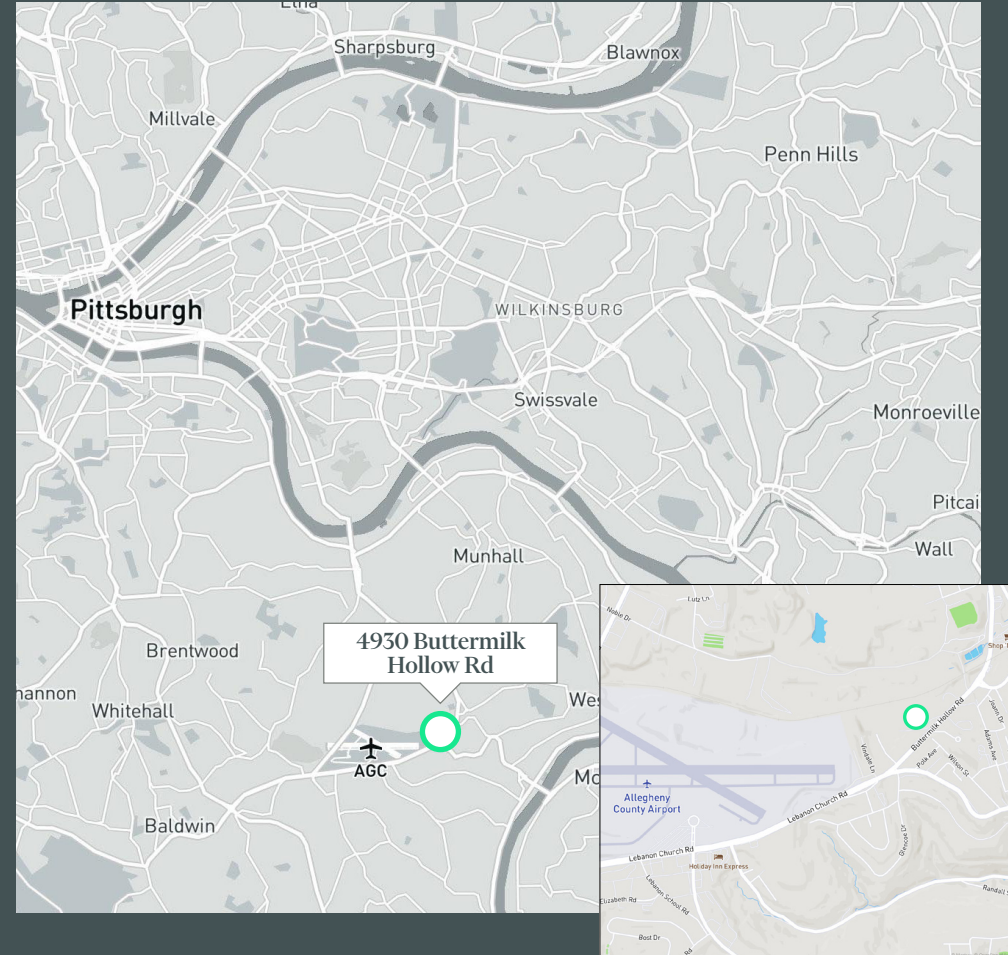
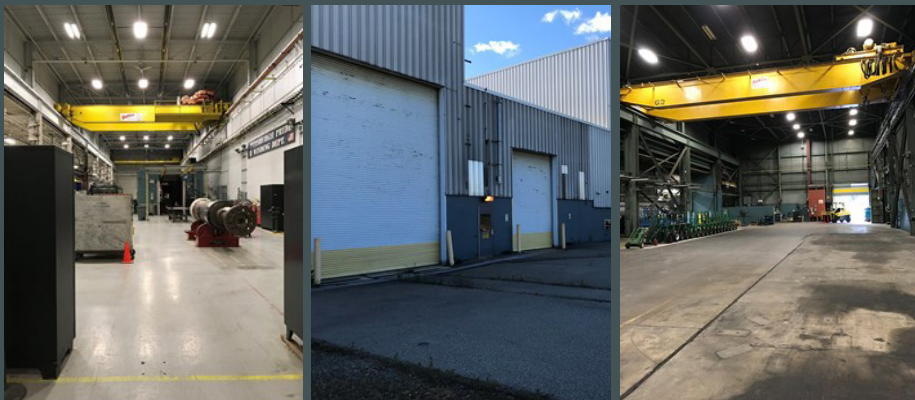
© 2024 CBRE, Inc. All rights reserved. This information has been obtained from sources believed reliable, but has not been verified for accuracy or completeness. You should conduct a careful, independent investigation of the property and verify all information. Any reliance on this information is solely at your own risk. CBRE and the CBRE logo are service marks of CBRE, Inc. All other marks displayed on this document are the property of their respective owners, and the use of such logos does not imply any affiliation with or endorsement of CBRE. Photos herein are the property of their respective owners. Use of these images without the express written consent of the owner is prohibited.

4930 Buttermilk Hollow Rd

West Mifflin, PA 15122

For Sale

- + Heavy manufacturing building, constructed in 1960 and 1961
- + Approximately 15,000 square feet of offices and classroom (training) space
- + Zoning is I-1, Industrial
- + Active Rail Spur adjacent to the property, currently disconnected
- + 12 overhead cranes in total ranging from two tons to 50 tons. The crane hook heights range from approx. 14' to 36'. Cranes are currently disconnected.
- + Ten (10) grade-level truck access doors of various sizes
- + All public utilities to the site, with substantial three-phase power available



Contact Us

Robert P. Blackmore, SIOR

First Vice President

+1 412 394 9829

robert.blackmore@cbre.com

CBRE