

Land Available for Sale

**CUNNINGHAM INDUSTRIAL PARKWAY AND 173RD STREET
BELTON, MISSOURI**

Property Highlights

- 19.32 (±) acre site
- Zoned I-1 light industry, office use permitted
- Utilities available
- Minutes from major retail along 58 Hwy
- Easy access to I-49 and 58 Hwy
- Located near CenterPoint KCS Intermodal Center, Richards Gebaur Commerce Park and NNSA facility
- Incentives available
- For sale at \$1,888,000 / \$2.50/sf

For information, please contact:

Mark C. Long, CRE, SIOR, CCIM, LEED

President and Chief Executive Officer

t 816-512-1011

mlong@ngzimmer.com

Chris S. Robertson, CCIM

Senior Managing Director, Principal

t 816-512-1014

croberson@nzimmer.com

1220 Washington Street, Suite 300
Kansas City, MO 64105

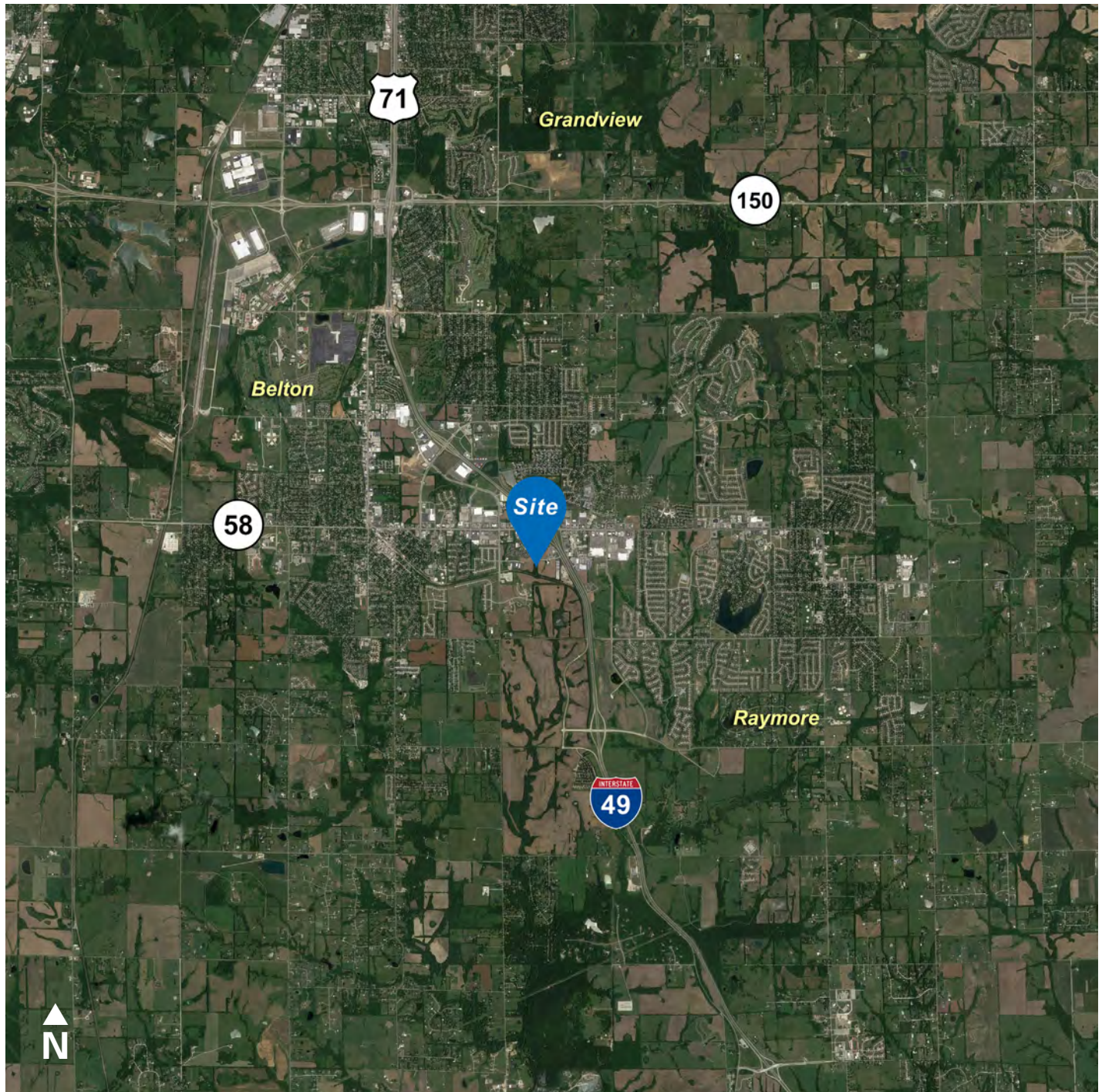
nmrkzimmer.com



**NEWMARK
ZIMMER**

The information contained herein has been obtained from sources deemed reliable but has not been verified and no guarantee, warranty or representation, either express or implied, is made with respect to such information. Terms of sale or lease and availability are subject to change or withdrawal without notice.

CUNNINGHAM INDUSTRIAL PARKWAY AND 173RD STREET, BELTON, MISSOURI



CONTACT

Mark C. Long, CRE, SIOR, CCIM, LEED

President and Chief Executive Officer

t 816-512-1011

mlong@ngzimmer.com

nmrkzimmer.com

Chris S. Robertson, CCIM

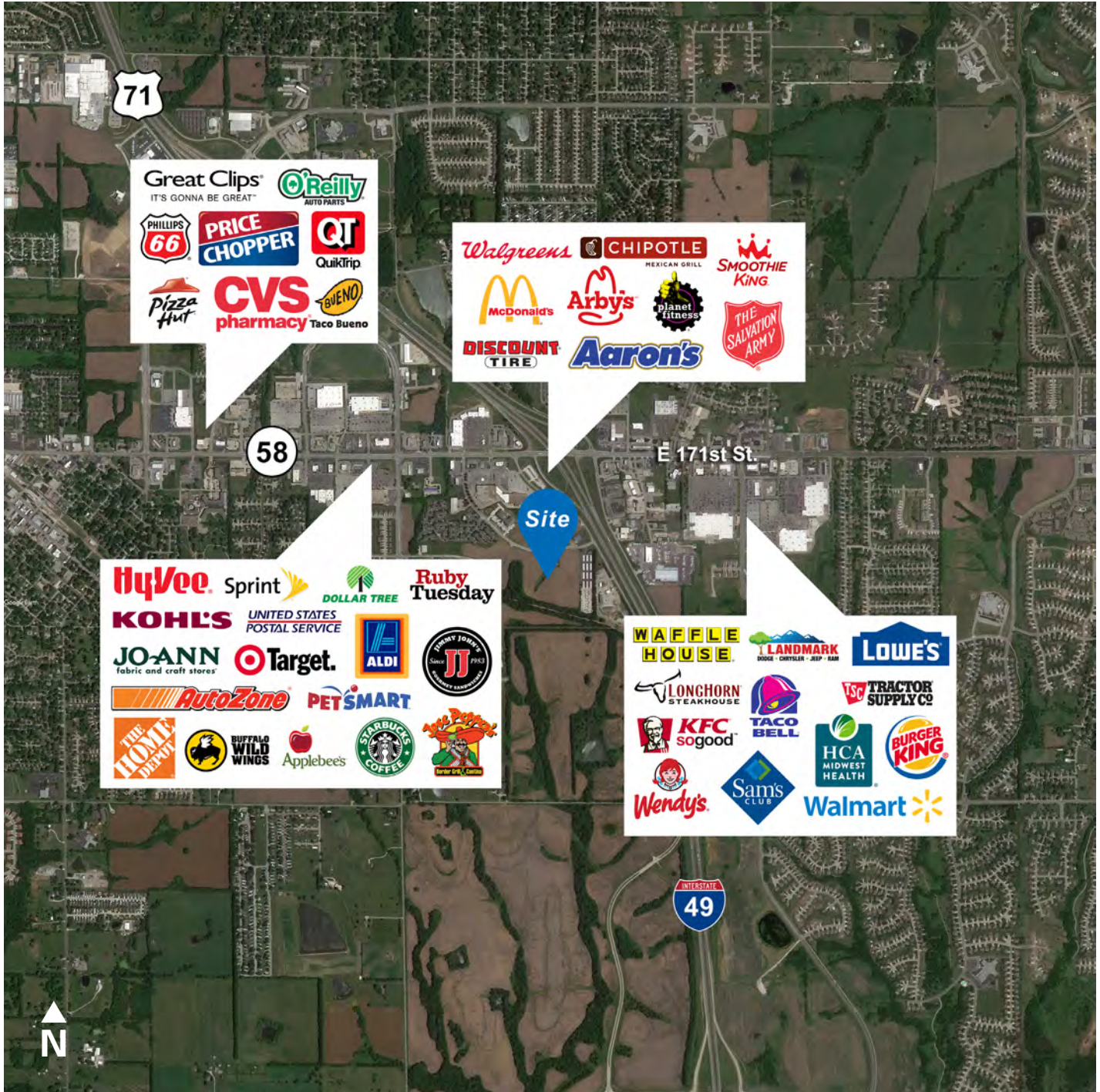
Senior Managing Director, Principal

t 816-512-1014

crobertson@nzimmer.com

NEWMARK
ZIMMER

CUNNINGHAM INDUSTRIAL PARKWAY AND 173RD STREET, BELTON, MISSOURI



CONTACT

Mark C. Long, CRE, SIOR, CCIM, LEED

President and Chief Executive Officer

t 816-512-1011

mlong@ngzimmer.com

nmrkzimmer.com

Chris S. Robertson, CCIM

Senior Managing Director, Principal

t 816-512-1014

croberson@nzimmer.com

NEWMARK
ZIMMER

CUNNINGHAM INDUSTRIAL PARKWAY AND 173RD STREET, BELTON, MISSOURI



CONTACT

Mark C. Long, CRE, SIOR, CCIM, LEED

President and Chief Executive Officer

t 816-512-1011

m-long@ngzimmer.com

nmrkzimmer.com

Chris S. Robertson, CCIM

Senior Managing Director, Principal

t 816-512-1014

[crobertson@nzimmer.com](mailto:c-robertson@nzimmer.com)

NEWMARK
ZIMMER