



FOR LEASE

10 DEPOT STREET
LIVERMORE FALLS, ME 04254

PROPERTY HIGHLIGHTS

- ◆ Join HealthReach Community Health Center in a 10,339± SF office/retail building.
- ◆ Unit 101: 2,309± SF
- ◆ Unit 102: 683± SF
- ◆ Nearby businesses include MaineHealth Livermore Falls Center, Dollar General, Dunkin', Cumberland Farms, Bailey Brothers Ford, among others.



LEASE RATE:

UNIT 101: \$1,200/MONTH MG

UNIT 102: \$500/MONTH MG

PROPERTY DETAILS

OWNER OF RECORD: Lamb Block Associates, LLC

ASSESSOR'S REFERENCE: Map 018, Lot 088

BOOK / PAGE: 6335 / 203

BUILDING SIZE 10,339± SF

LOT SIZE: 0.38± Acres

OF STORIES: Three (3)

YEAR BUILT: 1895

YEAR RENOVATED: 2012

ZONING: I3

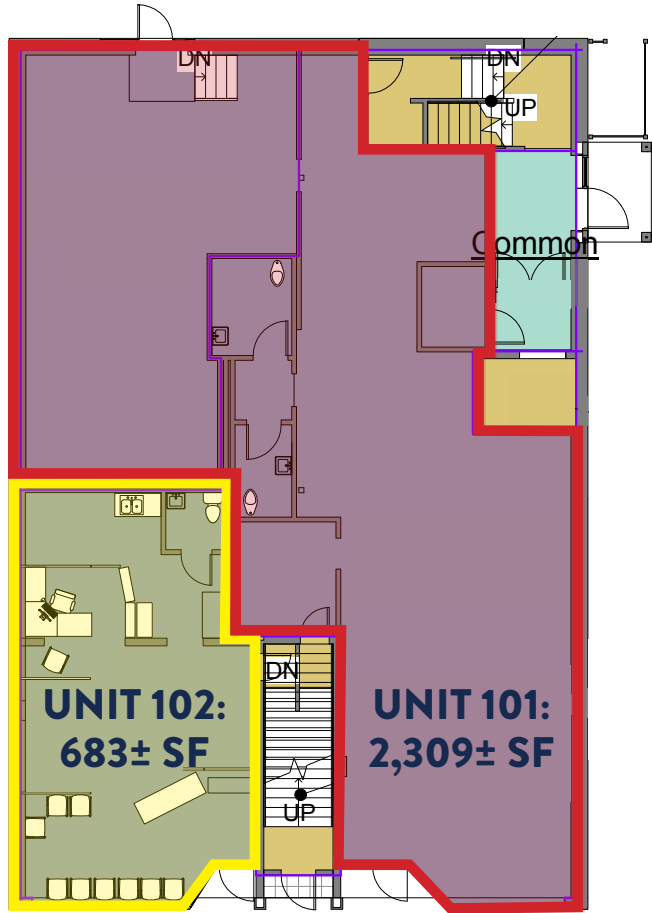
PARKING: Adjacent parking lot

SPRINKLER SYSTEM: Yes

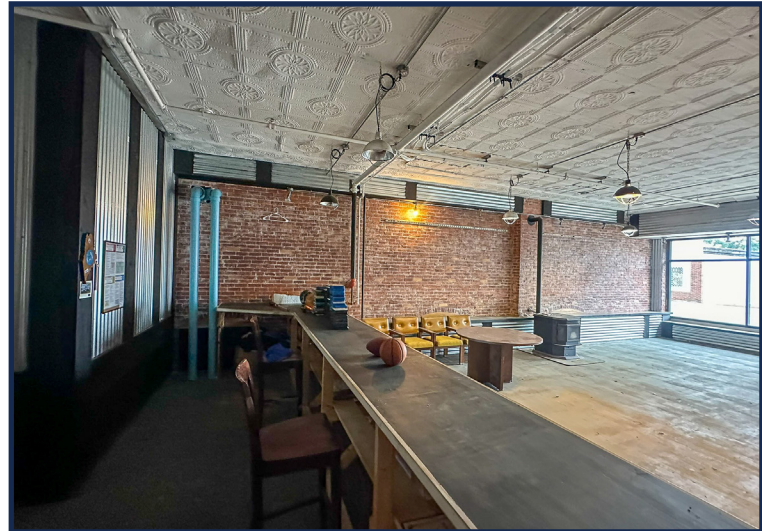
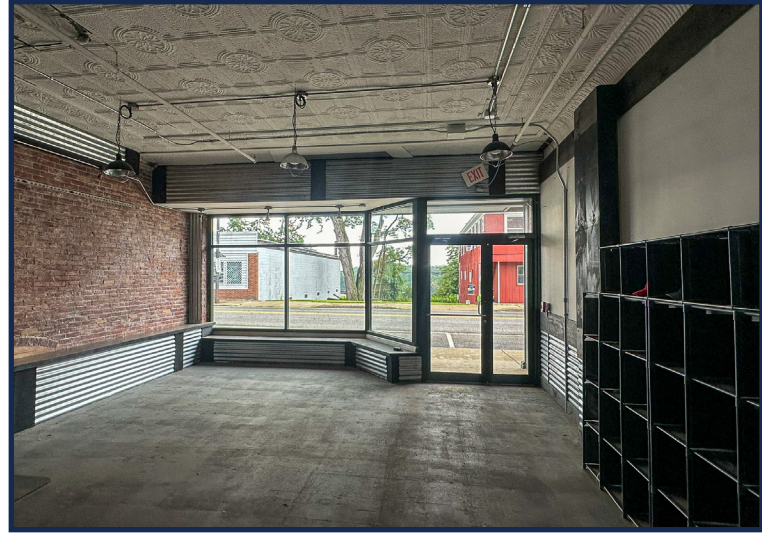
AVAILABLE SPACE: Unit 101: 2,309± SF
Unit 102: 683± SF

LEASE RATE: Unit 101: \$1,200/month MG
Unit 102: \$500/month MG

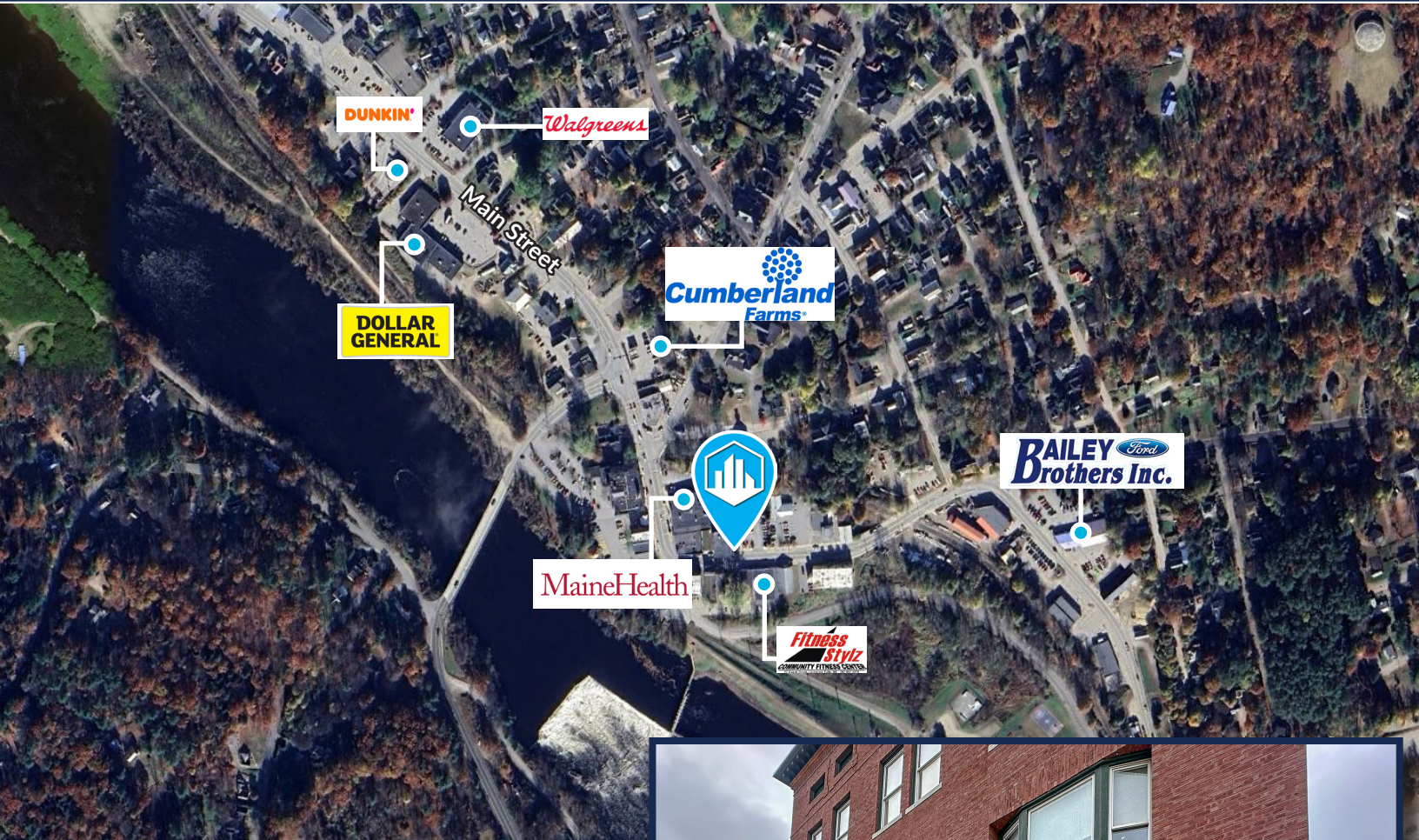
FLOOR PLAN



1 FIRST FLOOR



FOR LEASE 10 DEPOT STREET
LIVERMORE FALLS, ME 04245



CONTACT US



JOHN FINEGAN
Associate Broker
207.553.1718 D
207.829.8305 C
jfinegan@boulos.com



©2024 The Boulos Company, Inc. All rights reserved. This information has been obtained from sources believed reliable, but has not been verified for accuracy or completeness. You should conduct a careful, independent investigation of the property and verify all information. Any reliance on this information is solely at your own risk. The Boulos Company and The Boulos Company logo are service marks of The Boulos Company, Inc. All other marks displayed on this document are the property of their respective owners. Photos herein are the property of their respective owners. Use of these images without the express written consent of the owner is prohibited.