



CLASS A OFFICE SUITES FOR LEASE

**1701 HERMITAGE BLVD.**

TALLAHASSEE, FL 32308

---

**DANIEL H. WAGNON, SIOR**

Principal  
850.656.6555 X105  
daniel@structureiq.net

**WHITNEY EUBANKS**

Consultant  
850.228.6690  
whitney@structureiq.net



# 1701 HERMITAGE BLVD - PROPERTY OVERVIEW

TALLAHASSEE, FL 32308



## OFFERING SUMMARY

Lease Rate:	\$22.00 SF/yr (MG)
Building Size:	32,366 SF
Available SF:	2,092 - 5,734 SF
Lot Size:	3.33 Acres
Year Built:	2004
Renovated:	2024
Video Link:	<a href="https://vimeo.com/891498949?share=copy">https://vimeo.com/891498949?share=copy</a>

## PROPERTY OVERVIEW

Class A 32,000 square foot office with high visibility and signage directly on Hermitage Blvd., less than 1/2 mile from Thomasville Road interchange. A turnkey small office suite of 3,642 sf allows available for immediate occupancy, additional 2,092 sf office suite available in July 2024 for an option of 5,734 sf larger suite. Renovations and improvements are available based on term length. Long-time ownership and professional management gives stability to the office building. Entry Foyer and Common Area upgrades underway in 2Q 2024.

## LOCATION OVERVIEW

Located in the high demand office sub-market of I-10 & Thomasville Road, 1701 Hermitage is a Class A professional office building comprising of a diverse set of professional services companies. Visibility and frontage directly on Hermitage Blvd. allows for easing access from all major travel corridors, Capital Circle NE and Thomasville Road.



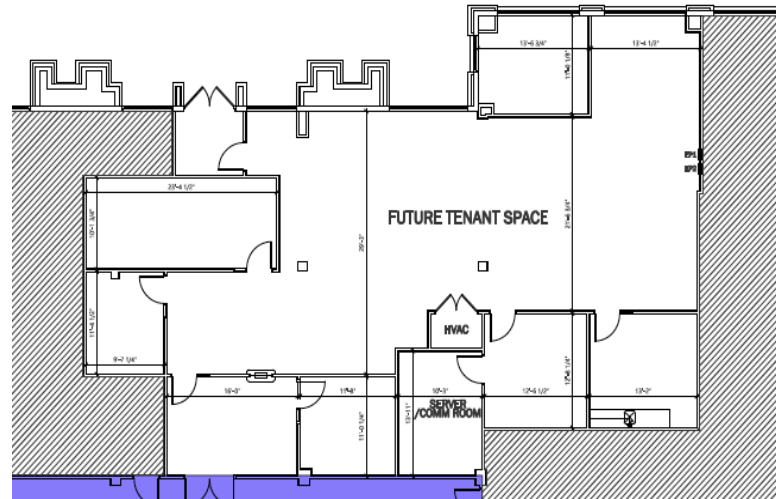
# PHOTOS: 1701 HERMITAGE BLVD

TALLAHASSEE, FL 32308



# 1701 HERMITAGE BLVD. SUITE 102 FLOORPLAN

TALLAHASSEE, FL 32308

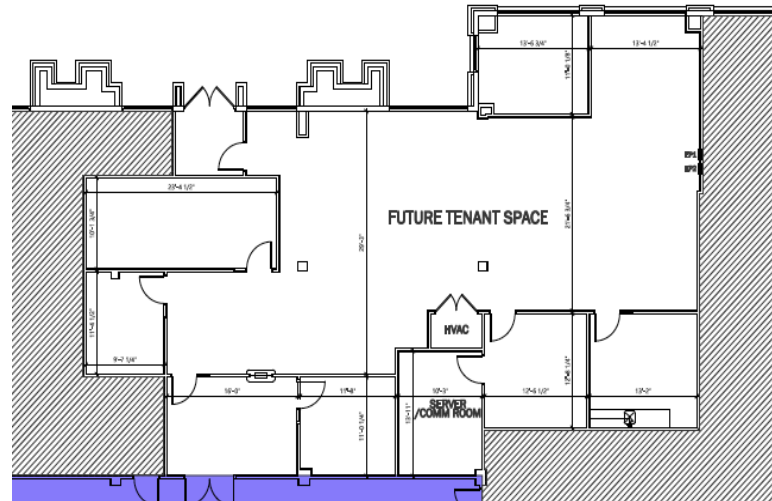


## AVAILABLE SPACES

SUITE	TENANT	SIZE (SF)	LEASE TYPE	LEASE RATE
Suite 102	Available	3,642 - 5,734 SF	Modified Gross	\$22.00 SF/yr

# 1701 HERMITAGE BLVD. SUITE 103 FLOORPLAN

TALLAHASSEE, FL 32308

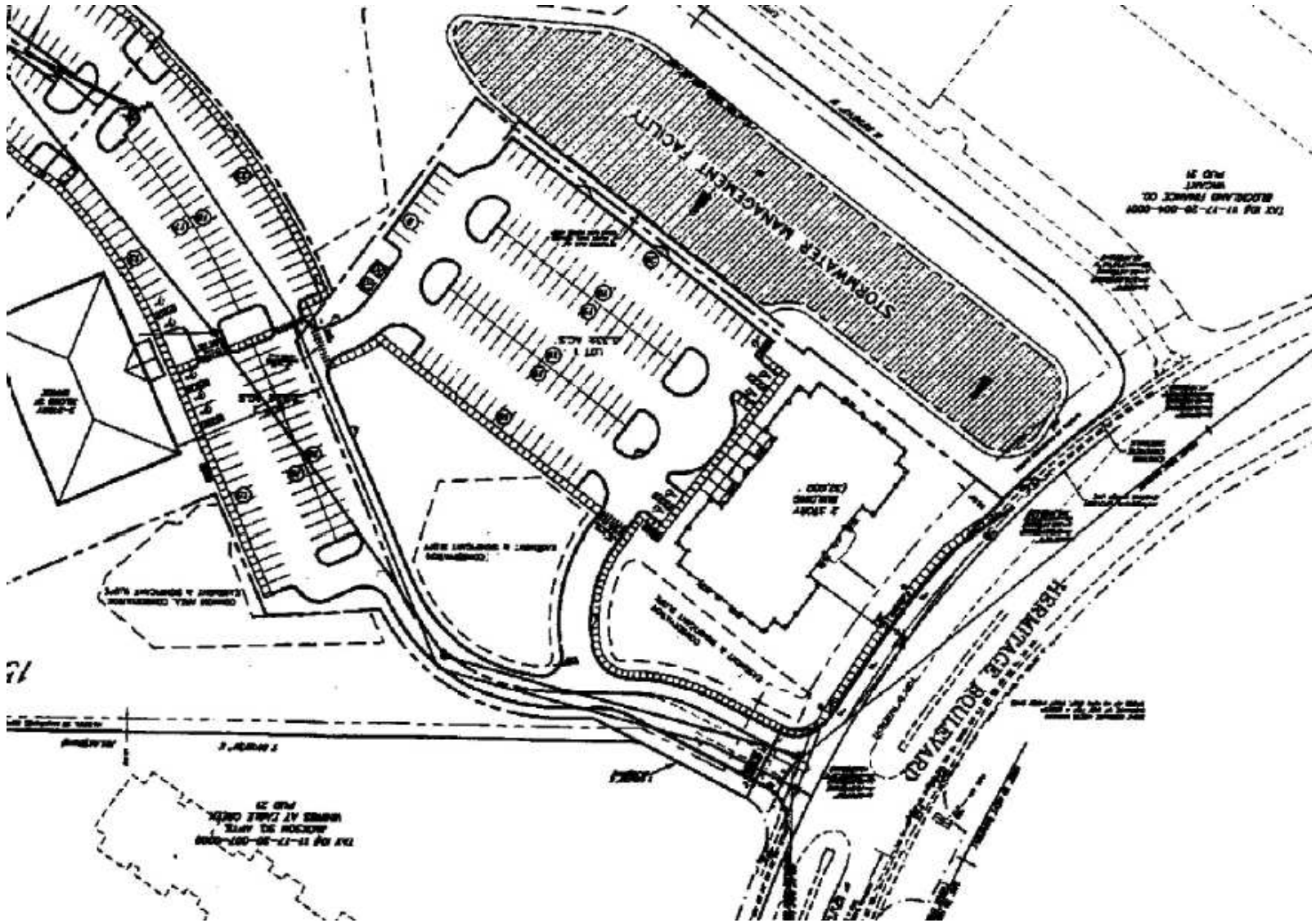


## AVAILABLE SPACES

SUITE	TENANT	SIZE (SF)	LEASE TYPE	LEASE RATE
Suite 103 Sublease	Available	2,092 SF	Modified Gross	\$22.00 SF/yr

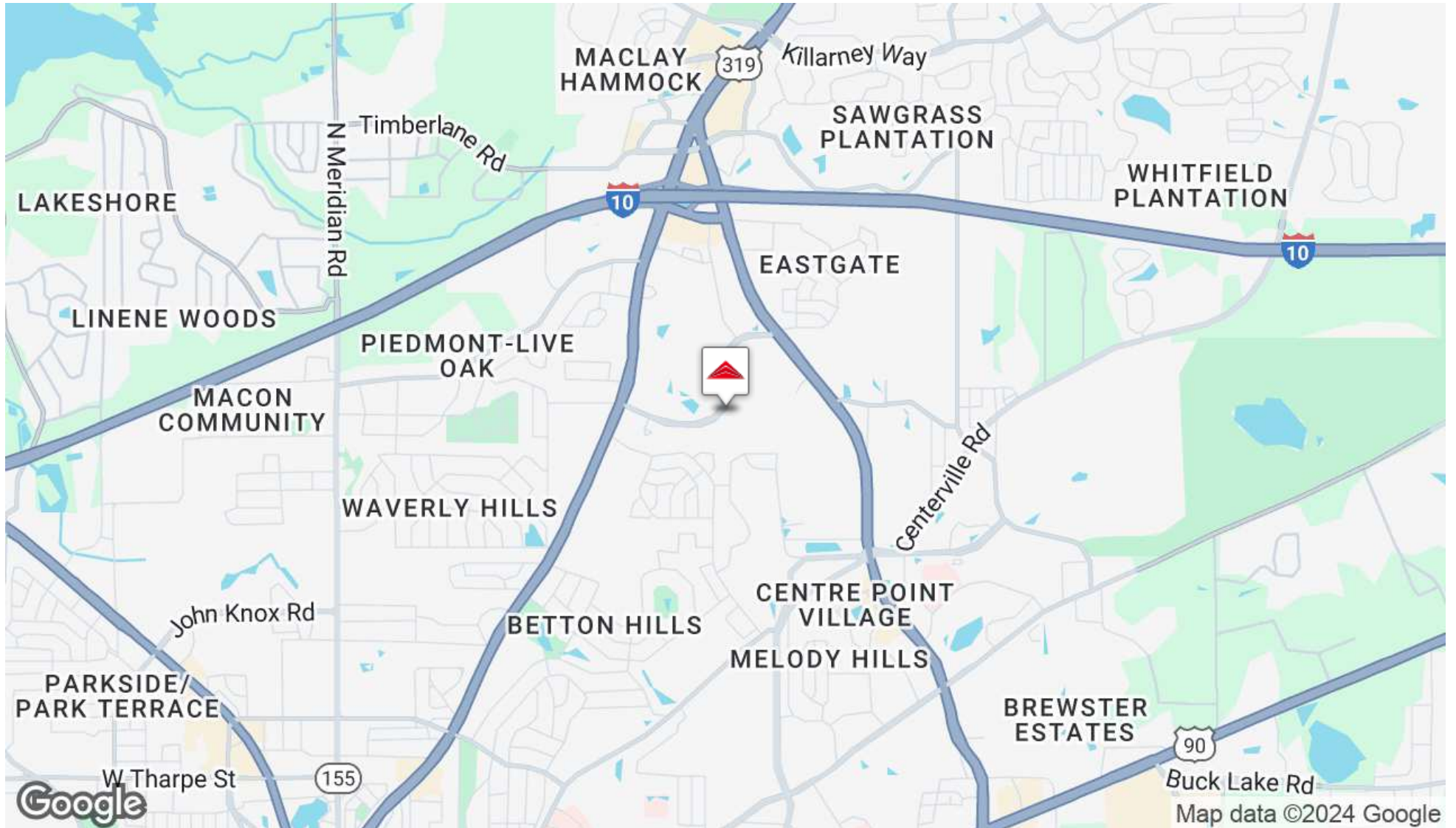
# SITE PLAN: 1701 HERMITAGE BLVD

TALLAHASSEE, FL 32308



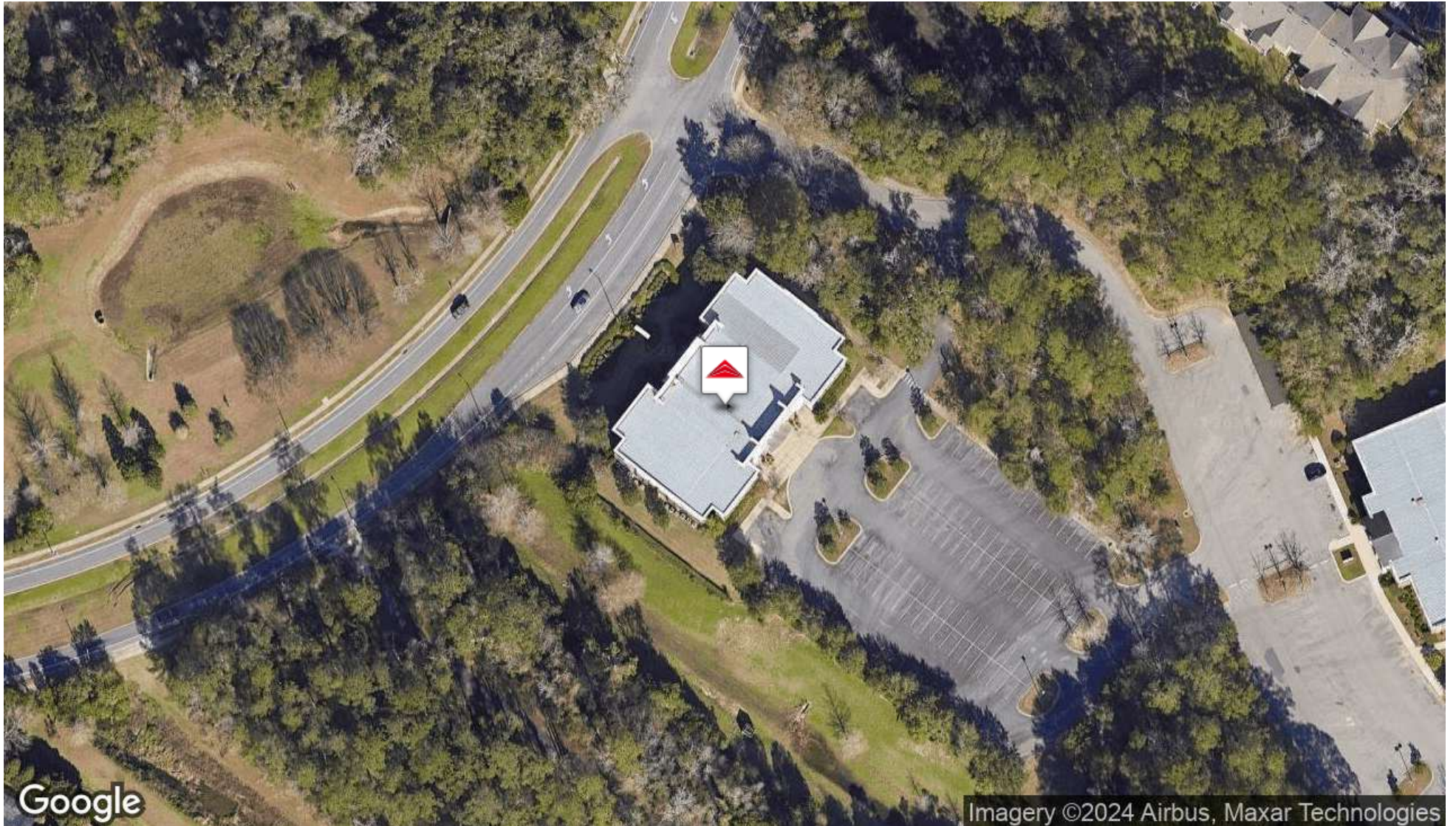
# 1701 HERMITAGE BLVD - CENTRALLY LOCATED

TALLAHASSEE, FL 32308



# 1701 HERMITAGE BLVD - AERIAL

TALLAHASSEE, FL 32308





# 1701 HERMITAGE BLVD - PROPERTY CONTACTS

TALLAHASSEE, FL 32308



**DANIEL H. WAGNON, SIOR**

Principal

daniel@structureiq.net

Direct: **850.656.6555 x105** | Cell: **850.766.2271**

## PROFESSIONAL BACKGROUND

Daniel has over 24 years of experience with 6 years in capital markets, investment banking, and asset valuation and over 18 years of experience in providing comprehensive corporate real estate and consulting services. His clientele includes users and owners of commercial real estate throughout the Southeast United States. Daniel's main focus has been on providing strategic planning, asset management and brokerage for institutional, corporate, non-profit and government clients. Such services also include portfolio optimization, analyzing consolidating opportunities, and executing real estate leases, acquisitions, dispositions, and developments.

## EDUCATION

Bachelor of Business Administration (BBA) and Master of Business Administration (MBA)  
The University of Georgia, Terry College of Business

## MEMBERSHIPS

Society of Industrial and Office Realtors (SIOR)  
Former Board Member - Early Learning Coalition of Big Bend  
Former Board Member - Ronald McDonalds' House of Big Bend  
F3 Member

**Structure Commercial Real Estate, a Real Estate IQ firm**

1705 Metropolitan Blvd. Suite 201  
Tallahassee, FL 32308  
850.656.6555



# 1701 HERMITAGE BLVD - PROPERTY CONTACTS

TALLAHASSEE, FL 32308



## WHITNEY EUBANKS

Consultant

whitney@structureiq.net

Direct: **850.228.6690**

## PROFESSIONAL BACKGROUND

Born and raised in Tallahassee, FL., Whitney joined Structure with a focus on Healthcare Real Estate and site selection. Whitney graduated with a Bachelors in Business Administration from Florida State University and an MBA in Healthcare Management from Florida Institute of Technology where she also played collegiate volleyball.

She has over 10 years experience in Marketing and Sales roles in the diagnostic imaging industry across N Florida and S Georgia. In 2018, she played an integral role in opening her family's construction company which has cultivated her passion for site selection and project management. In this role she oversees business finances, marketing and payroll.

Whitney is a mom of 3 and enjoys exploring the outdoors with her family any opportunity they get.

## EDUCATION

Bachelors, Business Administration, Florida State University  
MBA, Healthcare Management, Florida Institute of Technology

### Structure Commercial Real Estate, a Real Estate IQ firm

1705 Metropolitan Blvd. Suite 201  
Tallahassee, FL 32308  
850.656.6555

