



Service
Industrial

Warehouse & Office for Sublease



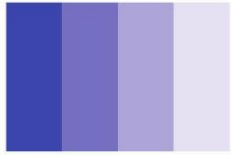
5200 Quincy St, Mounds View
32,719sf

Term through 9/30/2028
New direct lease also possible

jack@serviceindustrialmn.com
612-666-4883
Jack Crawford, Principal Broker

Disclaimer

- The information contained in this marketing brochure is believed to be accurate, but is unverified. For example, square footages have been approximated. Its purpose is to provide a preliminary background of the property to potential tenants, who are to undertake their own verification and discovery of the property. The information contained in these materials is not a substitute for a prospective renter's thorough investigation of the property. No representation or warranty is made by Service Industrial LLC regarding the accuracy or completeness of the content herein. A prospective tenant is solely responsible for independent investigation of the property and any costs or expense incurred through evaluation of the property.



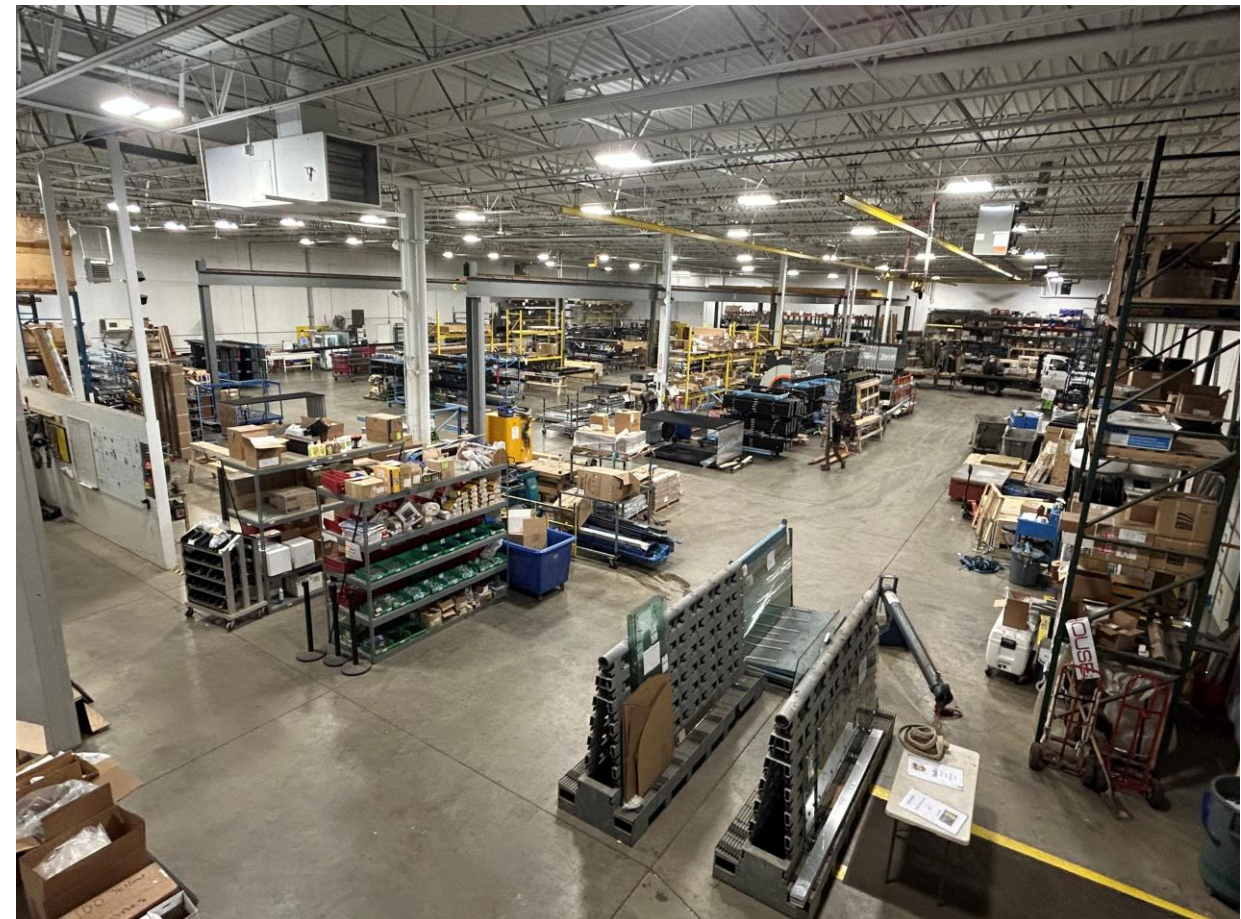
Service
Industrial

High image warehouse / office space



5200 Quincy St NE, Mounds View

Clean, highly functional warehouse space

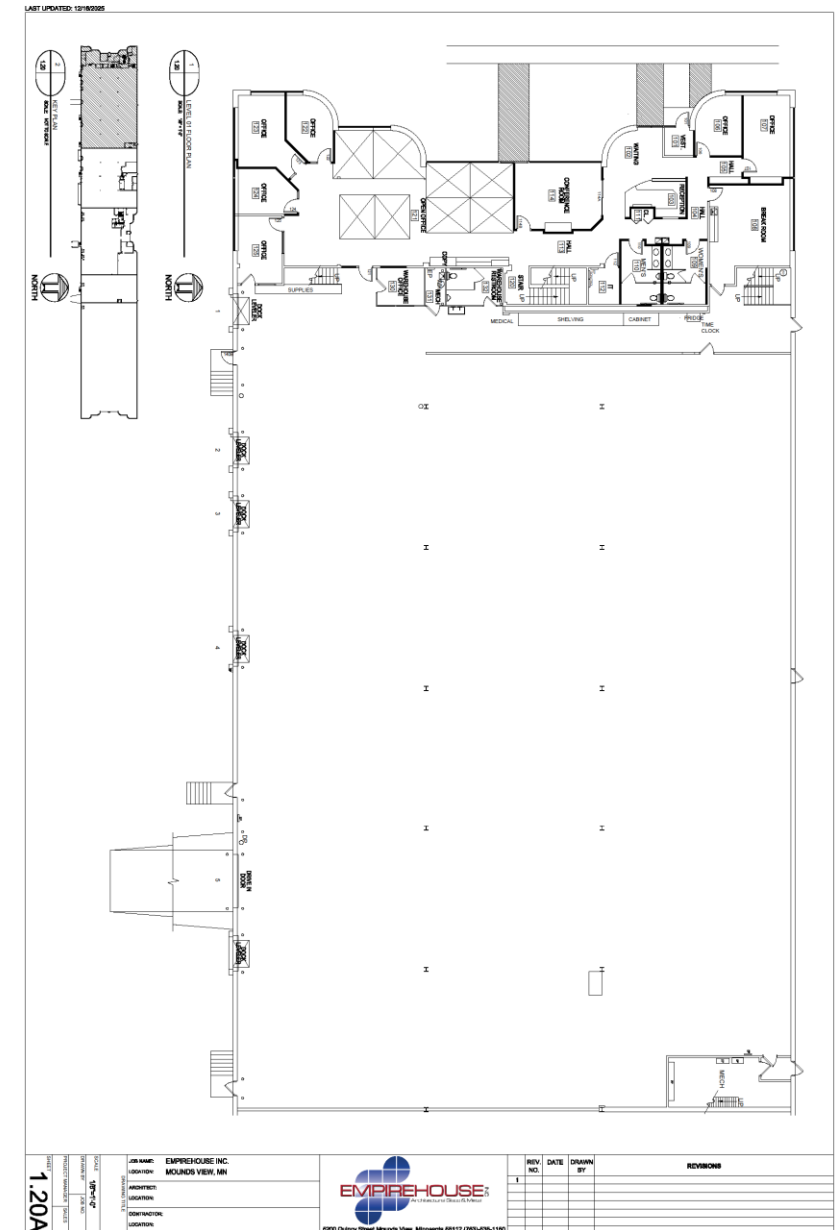




Service
Industrial

5200 Quincy St, Mounds View

- 32,719sf total sf
 - approx. 25,704sf warehouse
 - approx. 3,900sf 1st floor office
 - approx. 3,115sf 2nd floor office
- Appealing office space with ornate glass finishes
- Clean, well-lit warehouse
- 3-phase power service
- White walls and ceilings
- Fully sprinklered



Blend of open collaboration spaces and private offices on glass



Breakroom and five restrooms



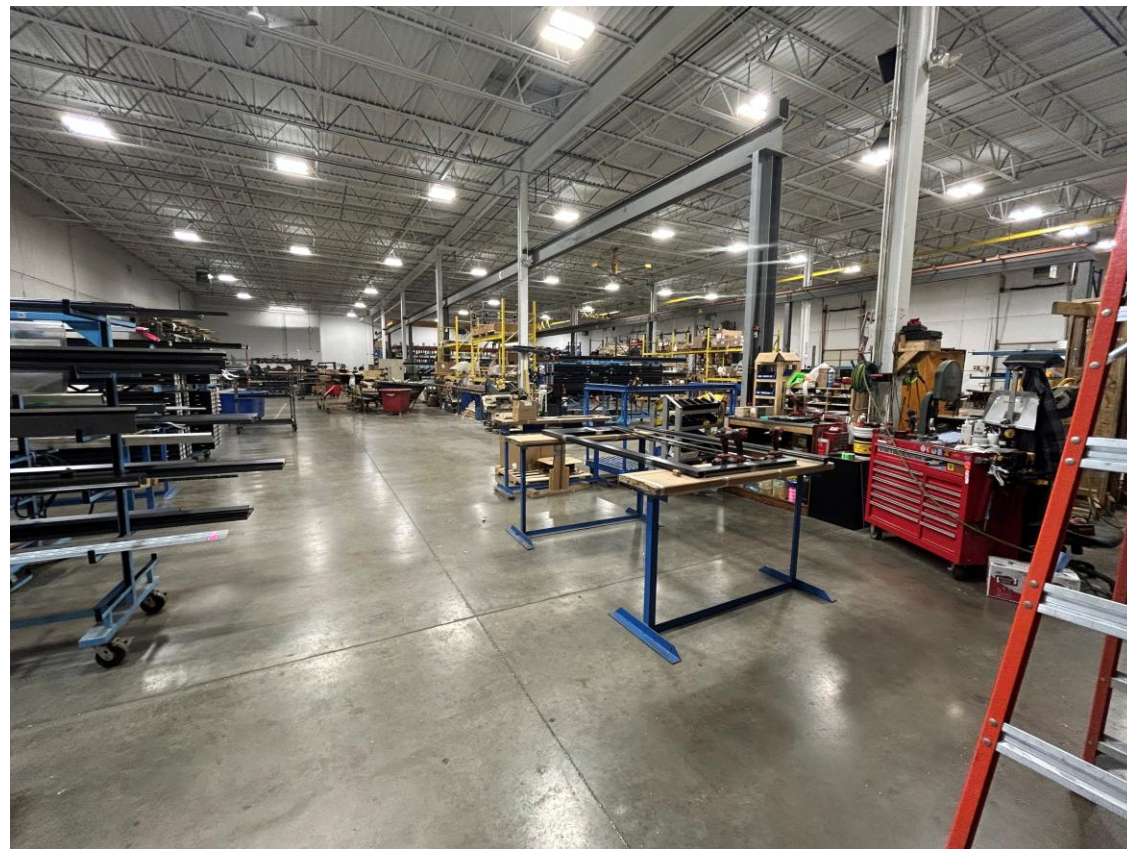
Service Industrial

Fenced, paved outside storage
~54'x63' = 3,402sf



5200 Quincy St NE, Mounds View

20' 6" clear height
Five docks with levelers, One 14' tall drive-ins



5200 Quincy St, Mounds View

Rates

- \$8.00/sf net
- CAM & Taxes are \$4.48/sf in 2025
- CAM & Tax rate for 2026 TBD

jack@serviceindustrialmn.com
612-666-4883
Jack Crawford, Principal Broker

