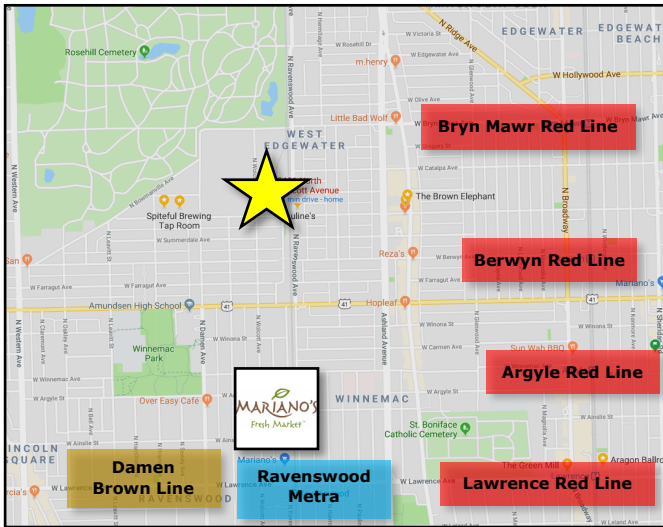


PARKING OR CONTRACTORS YARD FOR RENT .05 Acres of Land



Perfect for Parking or General Contractor use!



- Size:** Approx. 0.5 Acres of Land
- Rental Rate:** \$8,000 per Month (Modified Gross)
- Zoning:** M1-2
- Available:** Immediately
- Description:** Fenced yard space with private access onto Wolcott Avenue.



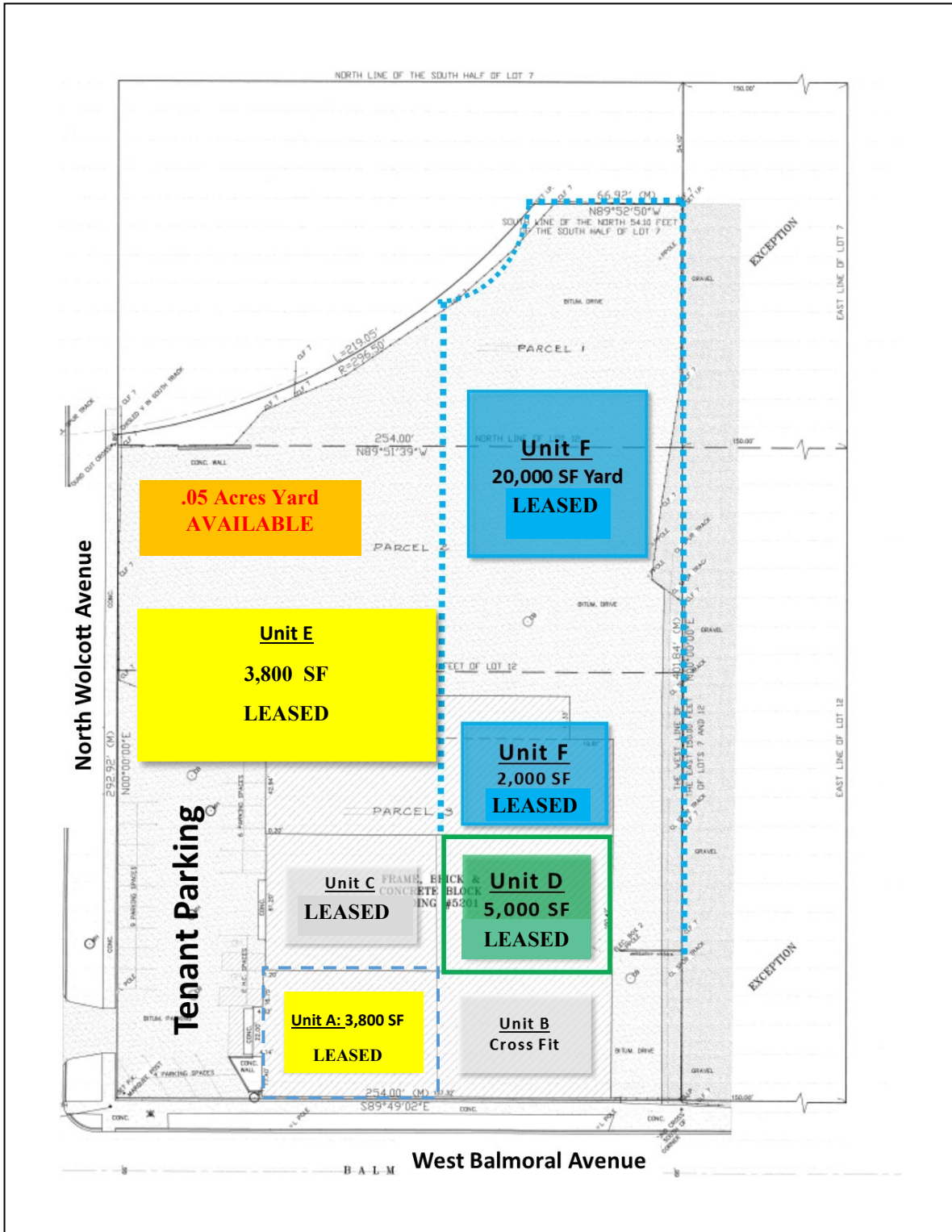
CRAIG WOLF
847-989-9653
CRAIG@STRAUSSREALTY.COM

STRAUSS REALTY, LTD.
4220 W. MONTROSE AVENUE
CHICAGO, ILLINOIS 60641

STRAUSS

REALTY, LTD.

5401 N. WOLCOTT AVE.
CHICAGO, IL. 60640



CRAIG WOLF

847-989-9653

CRAIG@STRAUSSREALTY.COM

STRAUSS REALTY, LTD.
4220 W. MONTROSE AVENUE
CHICAGO, ILLINOIS 60641
PHONE: 773-736-3600