

THIS MAP WAS PREPARED FOR ASSESSMENT PURPOSES ONLY. NO LIABILITY IS ASSUMED FOR THE ACCURACY OF THE DATA SHOWN. ASSESSOR'S PARCEL MAY NOT COMPLY WITH LOCAL LOT-SPLIT OR BUILDING SITE ORDINANCES.

POR. TEMECULA RANCHO SEC. 11 T.8S, R.3W
CITY OF TEMECULA

TRA 013-013

922-02

921-02



1" = 100'

Legend

- Lot Lines
- Right-Of-Way
- - - Old Lot Lines
- - - Reference R.O.W.
- - - Other Easements
- - - Leave Area
- ▬ Subdivision Tie Mark

Date	Old Number	New Number
1/1/1976	025-1	025-2.4
2/1/1976	025-2	025-5.6
3/1/1976	021-4	021-6.57
4/1/1976	022-3	022-5.57
4/1/1976	022-4	022-6.57
5/1/1976	022-6	022-7.11
7/1/1976	022-5	022-12.13
7/1/1976	022-12	022-14, 15, 10
10/1/1975	022-15	022-17.18
10/1/1975	022-14	022-19, 20
3/1/1977	022-9	022-21, 22
3/1/1977	022-13	022-23, 24
5/1/1977	024-6.7	024-15
5/1/1977	025-4	025-7.8
6/1/1977	023-1	023-10, 11, 57
6/1/1977	023-8	023-9
6/1/1977	024-5, 15	024-18
6/1/1977	023-6	023-7.8
6/1/1977	024-4	024-16, 17
8/1/1977	022-1	022-3, 8, 57
8/1/1977	022-2	022-4, 7, 57
8/1/1977	026-1	026-3, 4
8/1/1977	024-1	024-19, 20
8/1/1977	024-13	024-21, 22
2/1/1978	026-2	026-5, 6
5/1/1979	022-7, 9, 10	022-12, 17
6/1/1979	022-2, 3, 4	023-12, 17
6/1/1979	026-3, 5, 6	026-7, 10
6/1/1979	025-3, 5, 7	025-9, 12
2/1/1982	023-12, 13	023-16
4/1/1982	024-17, 18	024-23
5/1/1984	026-10	026-11
5/1/1984	025-13	025-14
5/1/1984	025-9, 11, 12	025-13
4/1/1986	024-21, 21.22	024-24
12/1/1985	024-24	024-25, 26
5/1/1987	021-5	021-07
4/1/1988	025-9, 13, 11	025-12, 13
6/1/1988	023-14, 17	023-19
6/1/1988	024-25, 26	024-27
11/1/1989	18	20, 21
1/1/1993	026-12, 13	026-14, 15
1/1/1995	021-3	021-7, 57
2/1/1997	023-20	023-21, 22
2/1/1999	025-14	026-16, 17
2/1/1999	025-8, 11	026-21, 22
2/1/1999	026-17, 19	026-20
2/1/1999	024-11	026-18, 19
3/1/2001	026-15, 18	026-27
3/1/2001	026-7	026-23, 24
3/1/2001	026-23	026-25, 26
3/1/2001	028-24, 26	028-27
7/1/2005	026-27	28-31
7/1/2005	22-28	026-32
5/1/2006	024-21, 22	33
11/1/2008	024-13, 11	024-28
6/23/2013	026-31	36, 39
6/23/2013	026-33	36, 37
6/23/2013	026-29	34, 35
6/23/2013	026-35	40, 41
4/5/2012	026-43	44, 45
4/5/2012	029-43, 41	42, 43
7/18/2019	025-37	46, 47
7/18/2019	026-15, 16	48

RIVER ST.

OLD TOWN

ST.

FIFTH

ST.

ST.

HWY

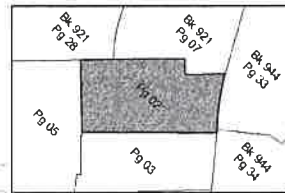
395



Data
DEED # 105961 12/67
MAP # 412563 STATE HWY 395
RS 63/31, MERC 291

BBernard

ASSESSOR'S MAP BK922 PG. 02
Riverside County, Calif.



Map Reference

MB 209/21 - 23 TRACT MAP NO. 23925
MB 157/26 SD TOWN OF TEMECULA

Aug 2019