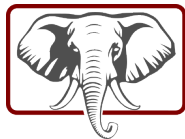


INDUSTRIAL OPPORTUNITY

2304 Bellevue Street
Goldston, NC



CRIMSON CAROLINA^{LLC}
COMMERCIAL REAL ESTATE SERVICES

Ray Snead
919.802.6119
rsnead@crimsoncarolina.com



CONTACT FOR PRICE

SITE FEATURES

ADDRESS

2304 Bellevue Street
Goldston, NC 27252

PARCEL ID

9606-28-8989

SIZE

± 20.55 acres

ZONING

LI - Light Industrial

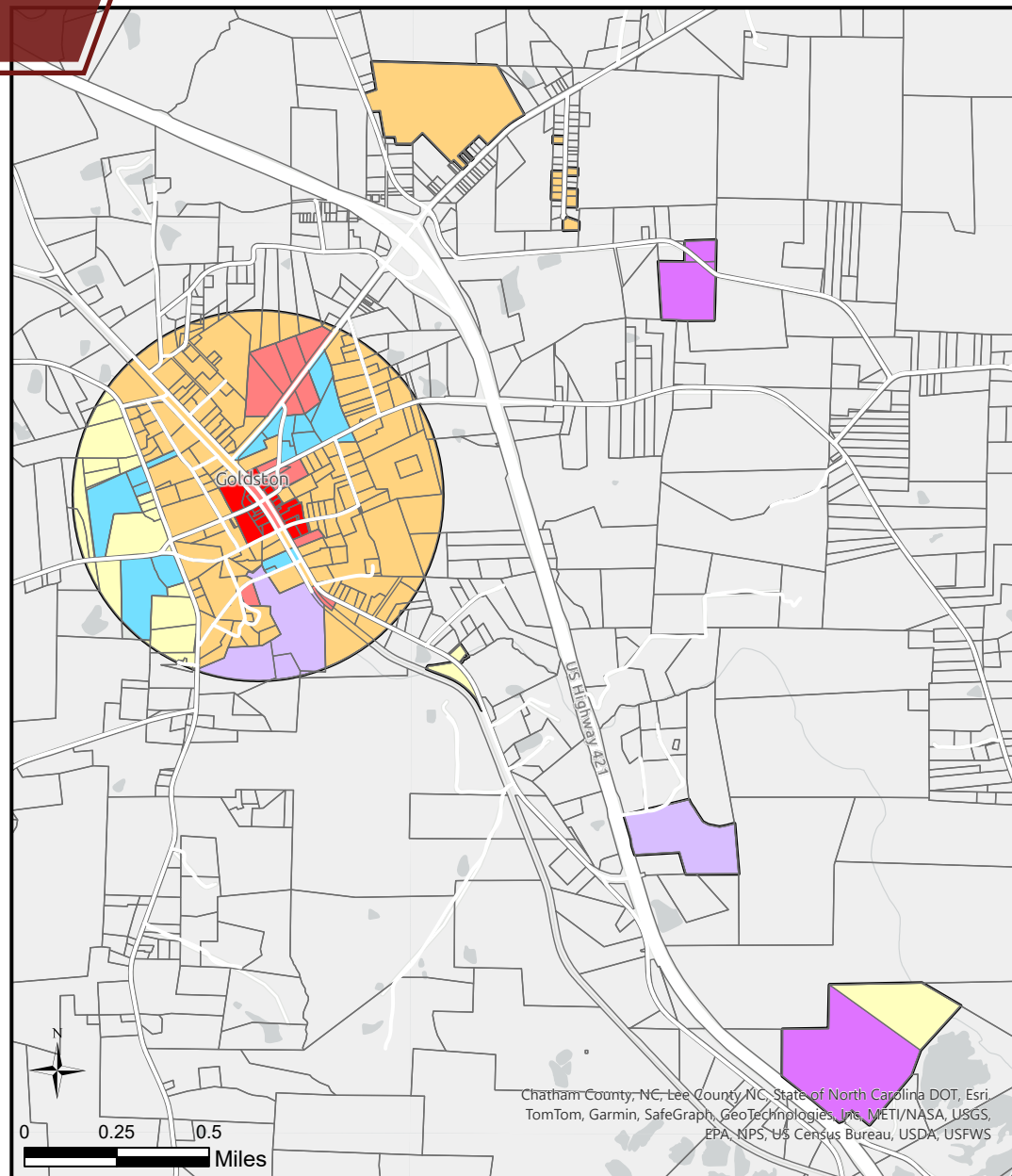
UTILITIES

Goldston Gulf Sanitary District
Town of Goldston

FEATURES

- Norfolk Southern rail runs along the eastern side of the site along Bellevue Street

ZONING MAP



Zoning Map of Goldston, North Carolina

Map created by Chatham County
GIS Department | April 25, 2024

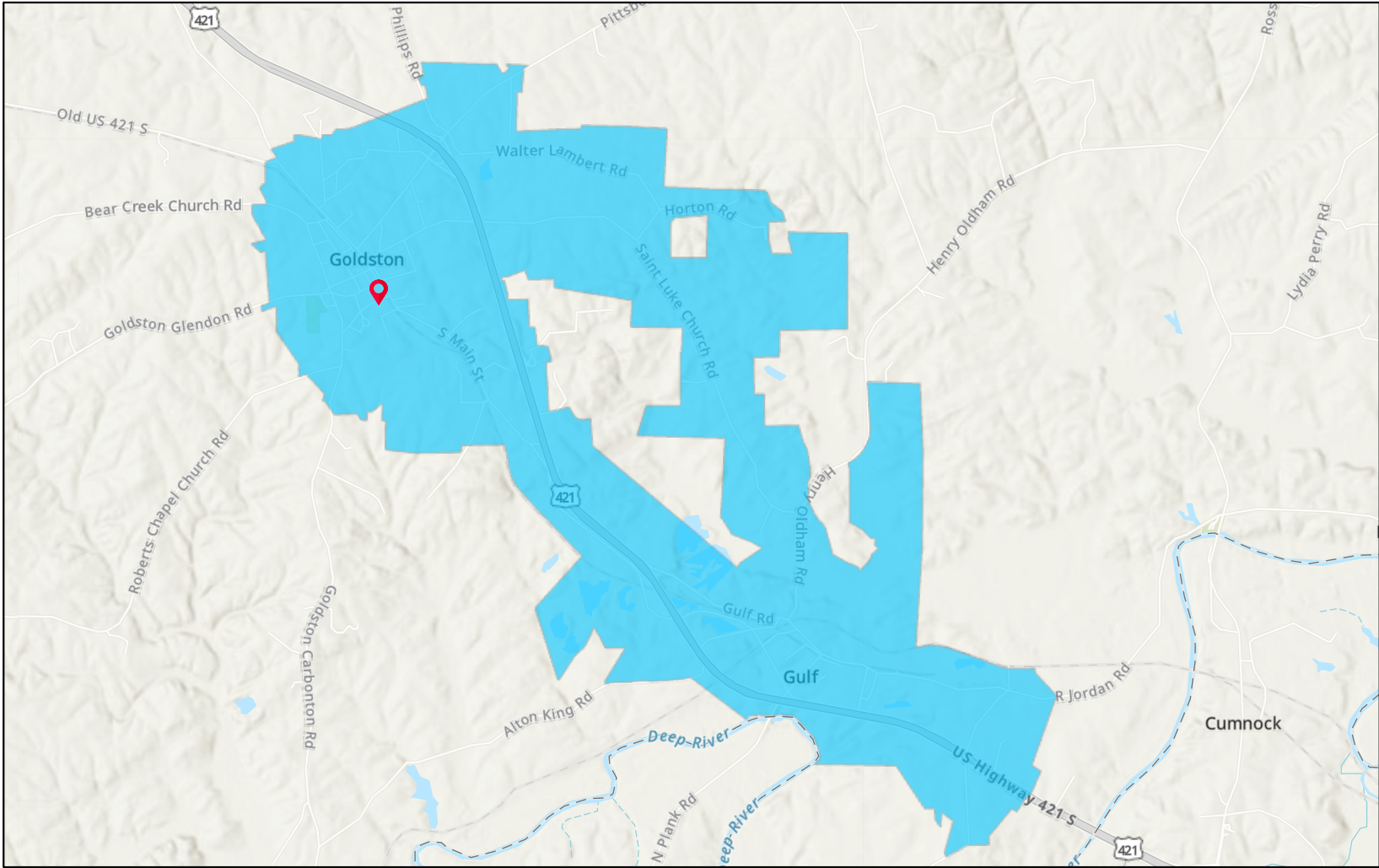


Zoning Classification

- | | |
|---|---|
| ■ (CB-1) Central Business District | ■ (O&I) Office & Institutional |
| ■ (C-1) Commercial District | ■ (R-1) Residential District 1 |
| ■ (IH) Heavy Industrial District | ■ (R-15) Residential District 15 |
| ■ (IL) Light Industrial District | |

UTILITIES MAP

Goldston Gulf Utilities



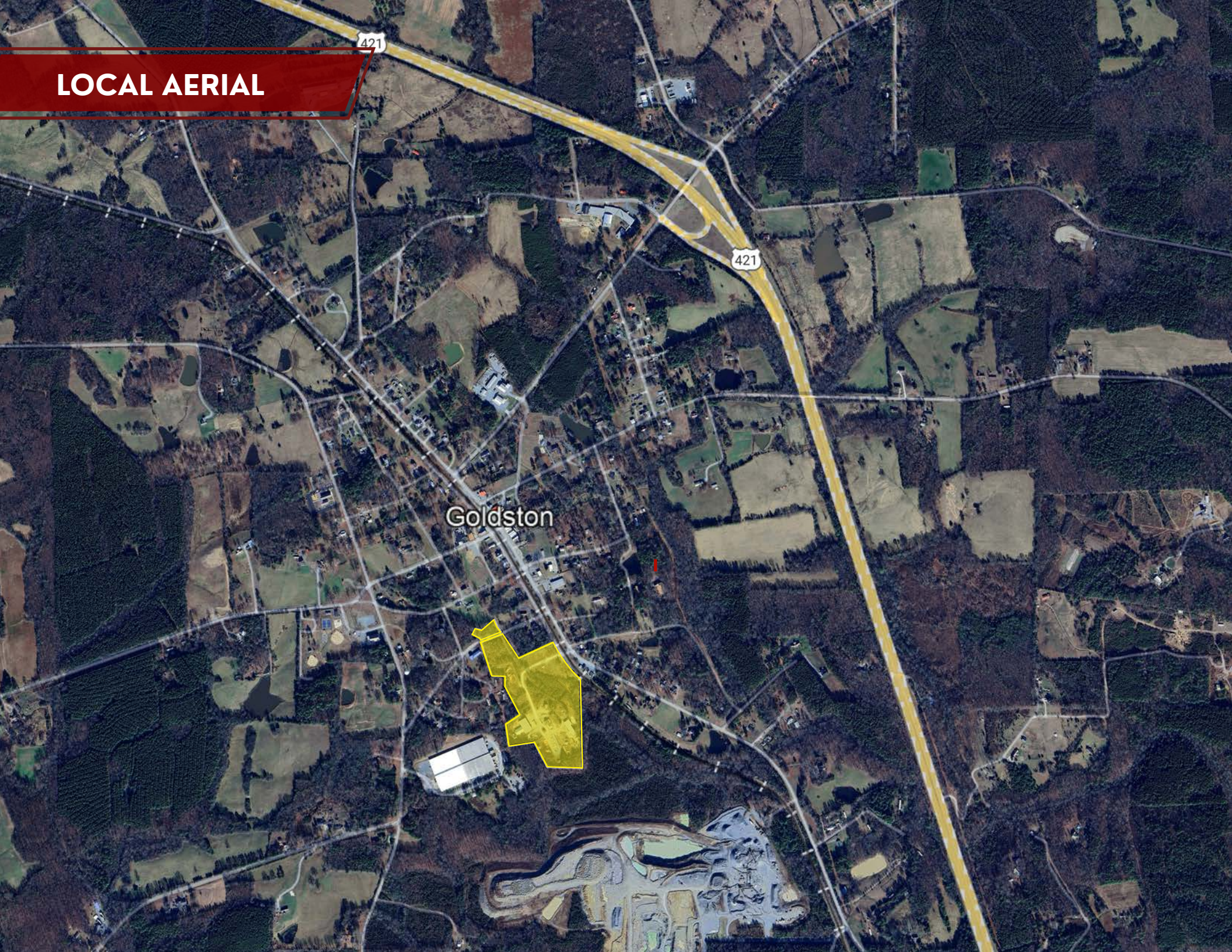
10/30/2025

Goldston-Gulf Sanitary District

World_Hillshade

1:62,699
0 0.42 0.85 1.7 mi
0 0.5 1 2 km
Chatham County, NC, Lee County NC, State of North Carolina DOT, Esri, TomTom, Garmin, SafeGraph, GeoTechnologies, Inc, METI/NASA, USGS,

LOCAL AERIAL



REGIONAL AERIAL

LOCATION + ACCESS

GULF.....	3.7 MILES
BEAR CREEK.....	4.2 MILES
SANFORD.....	12 MILES
SILER CITY.....	12.6 MILES
PITTSBORO.....	14.1 MILES
RALEIGH.....	50.1 MILES
FAYETTEVILLE.....	49.2 MILES

Harpers Crossroads

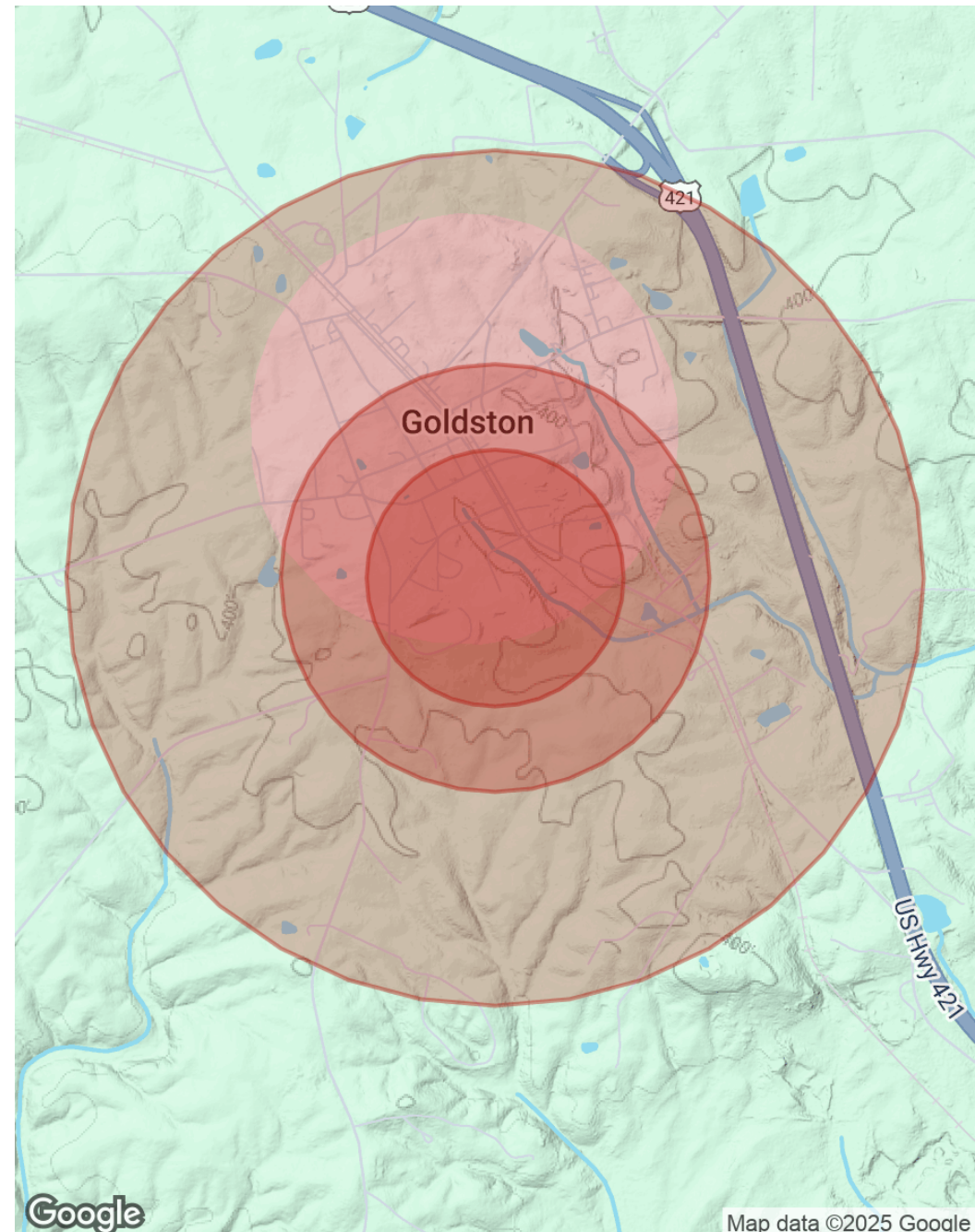


DEMOGRAPHICS

POPULATION	0.3 MILES	0.5 MILES	1 MILE
Total Population	50	152	357
Average Age	46	46	46
Average Age (Male)	46	46	46
Average Age (Female)	46	45	46

HOUSEHOLDS & INCOME	0.3 MILES	0.5 MILES	1 MILE
Total Households	22	66	157
# of Persons per HH	2.3	2.3	2.3
Average HH Income	\$91,018	\$91,018	\$90,831
Average House Value	\$225,620	\$225,620	\$224,230

Demographics data derived from AlphaMap



Map data ©2025 Google



CRIMSON CAROLINA^{LLC}
— COMMERCIAL REAL ESTATE SERVICES —

Ray Snead
919.802.6119
rsnead@crimsoncarolina.com