

FOR LEASE

36-60 Industrial Place,
MIDDLETOWN, NY 10940

10,000 SF

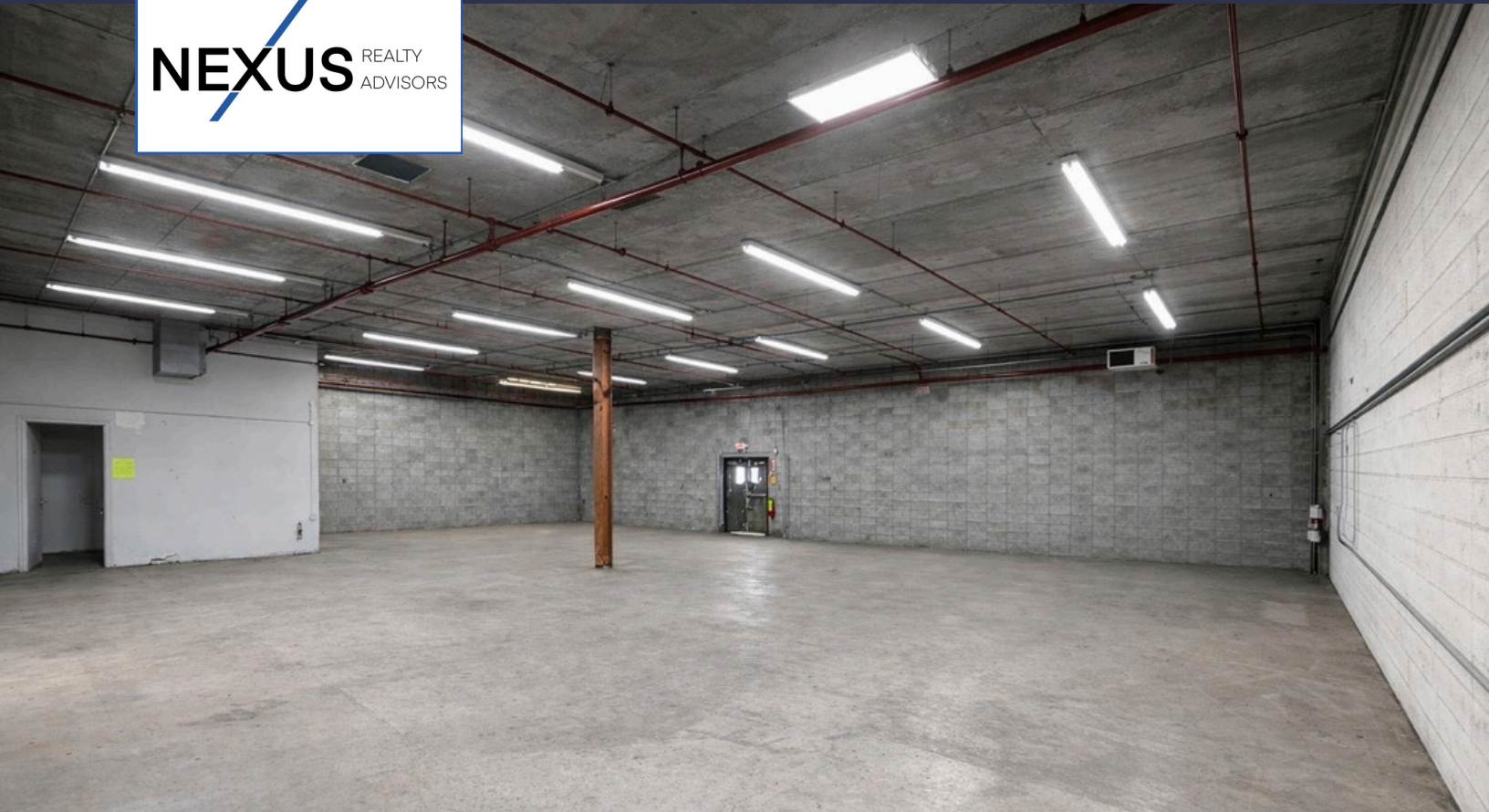


Michael Fromowitz
Michael@nexusrealtyad.com
917-720-7767

Eli Lovi
eli@nexusrealtyad.com
718-930-7054

Yehuda Tyberg
yehuda@nexusrealtyad.com
347-263-2096

36-60 Industrial Place, MIDDLETOWN, NY 10940



BUILDING SPECIFICATIONS

- **Total Sq Feet Available:** 10,000 SF Warehouse
- **Ceiling Height:** 14.5' Clear
- **Loading:** 2 Loading Docks (12'x14')
- **Parking:** 20 Car Spaces
- **Utilities:** Public
- **Zoning:** I-2 Industrial Manufacturing & Distribution Permitted
- **Availability:** Immediate
- **Tax & CAM:** Est \$2/SF
- **Asking:** \$9.25/SF

36-60 Industrial Place, MIDDLETOWN, NY 10940



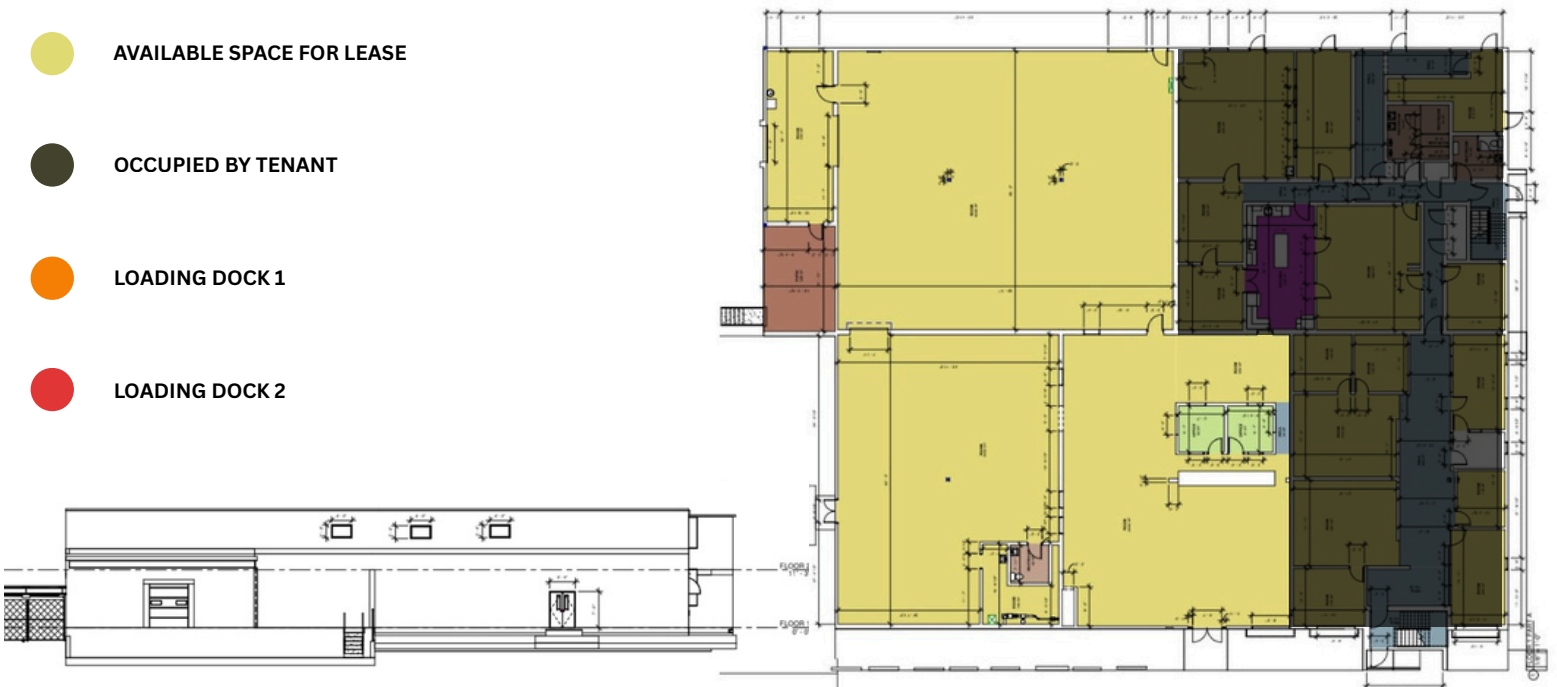
LOADING DOCKS & SITE PLAN

● AVAILABLE SPACE FOR LEASE

● OCCUPIED BY TENANT

● LOADING DOCK 1

● LOADING DOCK 2



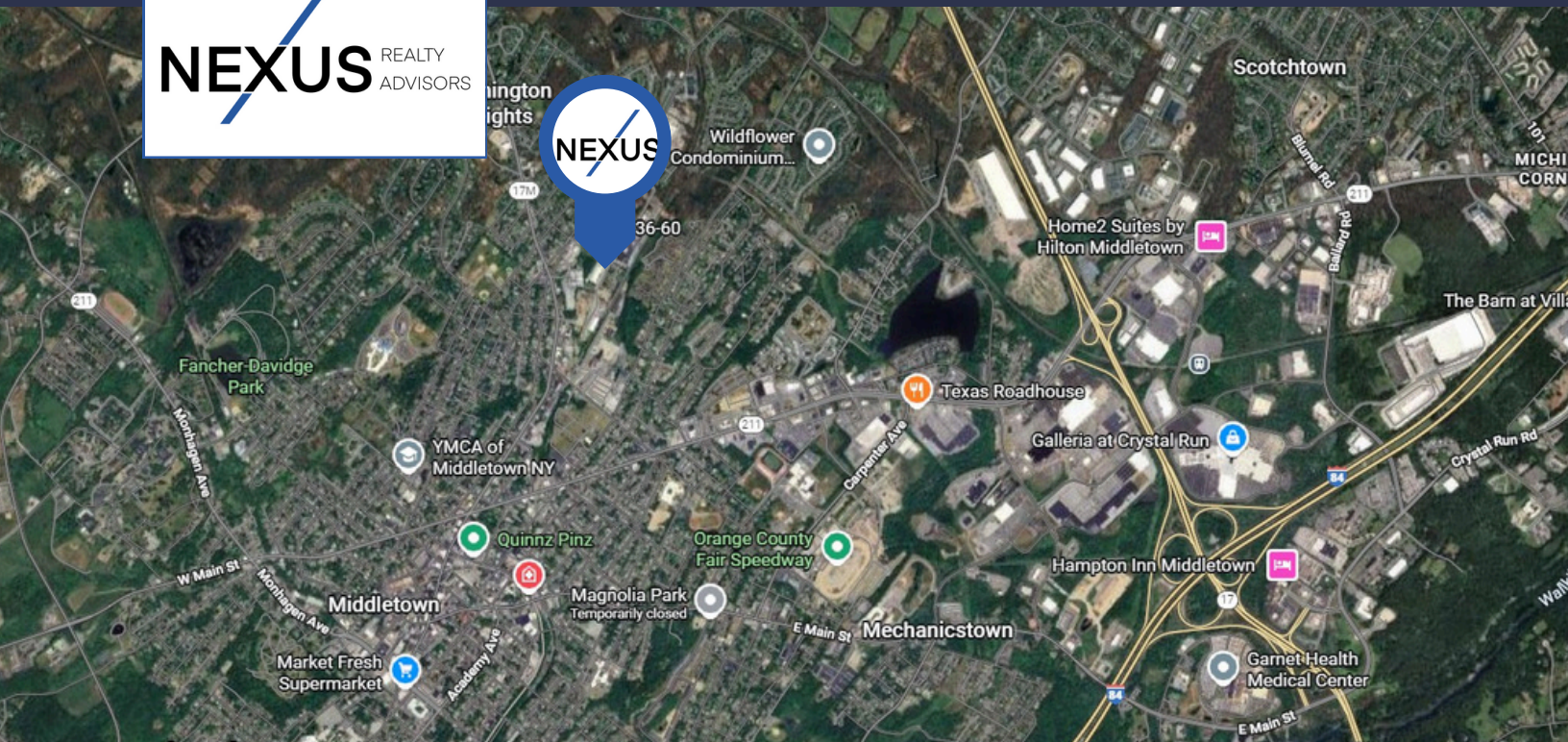
36-60 Industrial Place, MIDDLETOWN, NY 10940



INTERIOR PHOTO GALLERY



36-60 Industrial Place, MIDDLETOWN, NY 10940



Distance

Location

Industrial Neighbors

.5 miles to



1 mile to (Exit 15)



4 miles to



21 miles to



Michael Fromowitz
Michael@nexusrealtyad.com
917-720-7767

Eli Lovi
eli@nexusrealtyad.com
718-930-7054

Yehuda Tyberg
yehuda@nexusrealtyad.com
347-263-2096