



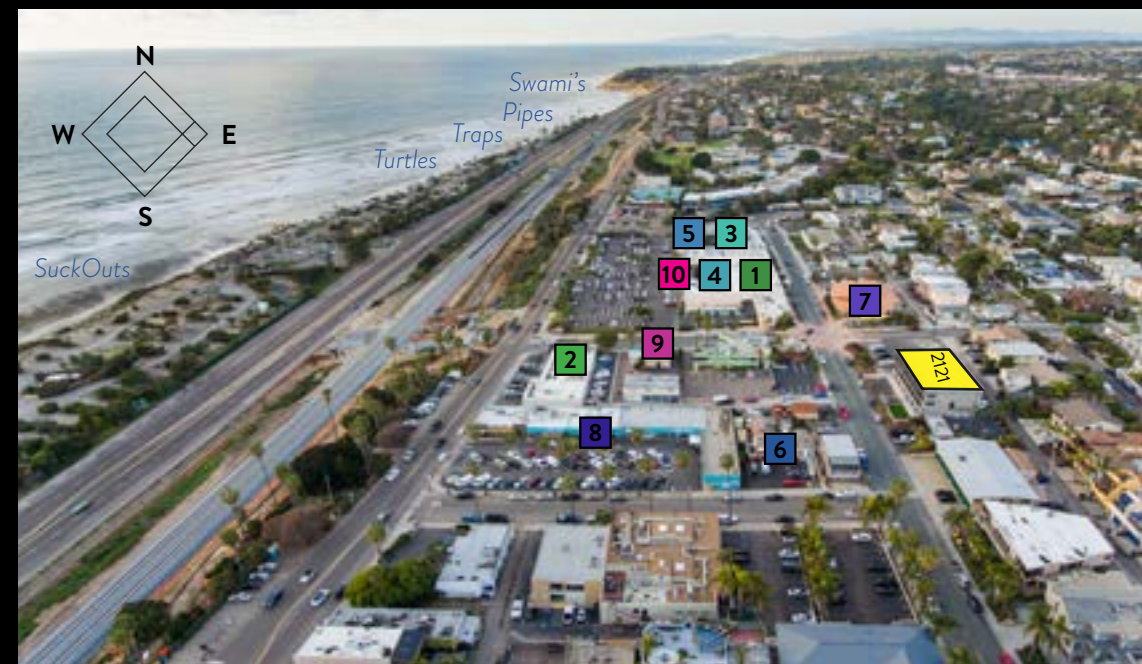
2121 NEWCASTLE AVE
CARDIFF BY THE SEA, CA
SPEC RETAIL/OFFICE UNITS
AVAILABLE

**850 SF
SPEC SUITE
AVAILABLE
CONTIGUOUS TO
2,550 SF
\$4,550/SUITE**



LOCATION

- Seaside Market **1**
- Fish 101 **2**
- Lost Abbey Brewery **3**
- Starbucks **4**
- Postal Annex **5**
- Bestawan Pizza **6**
- Cardiff Library **7**
- VG's Donuts **8**
- Pipe's Cafe **9**
- Sambazon **10**



LOCATION

Steps to North County's Best Beaches, Restaurants, Shopping & Entertainment



DESIGN

Complete 2019 Multi-Million Dollar Modern Interior & Exterior Renovation



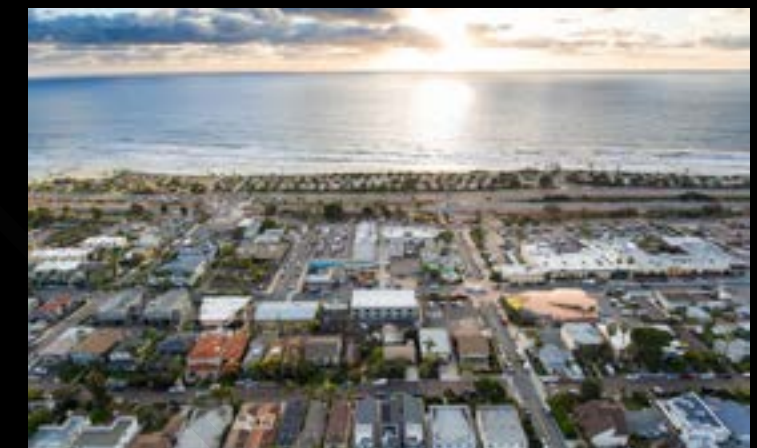
NEW SPEC SUITES

Ground Floor Open Layouts with custom fabricated glass storefronts & 12ft vaulted ceilings



PARKING

The best on the coast





“NEVER
DRIVE
AWAY
FROM
GOOD
SURF.”

~ JACK LONDON

STEVE BRUCE

Senior Managing Director
CA RE Lic #01455744
858.875.3605
steve.bruce@ngkf.com

CHRIS HIGH, SIOR

Senior Managing Director
CA RE Lic #01734544
858.875.3604
chris.high@ngkf.com

CONOR EVANS

Associate
CA RE Lic #01963596
858.875.3607
conor.evans@ngkf.com

Newmark Knight Frank
CA RE Lic #01355491
4655 Executive Drive, Suite 800
San Diego, CA 92121
858.875.3600 MAIN | 858.875.3636 FAX

