

# Retail/Office/Restaurant Space For Lease



## Prominent SW Corner 14th & Q Streets 1317 Q Street

Lincoln, NE 68508

For more information, contact:

**Andy Widman**

402 441 5814 • [awidman@naifma.com](mailto:awidman@naifma.com)

**Marc Hausmann, SIOR, CCIM**

402 441 5834 • [mhausmann@naifma.com](mailto:mhausmann@naifma.com)

**Sally DeLair**

402 441 5822 • [sdelair@naifma.com](mailto:sdelair@naifma.com)

**Richard Meginnis, SIOR**

402 441 5828 • [rmeginnis@naifma.com](mailto:rmeginnis@naifma.com)

**NAIFMA Realty**

Union Bank Place | 1248 O Street, Ste. 550, Lincoln, NE 68508 | (402) 441-5800 | [www.naifmarealty.com](http://www.naifmarealty.com)

NO WARRANTY OR REPRESENTATION, EXPRESS OR IMPLIED, IS MADE AS TO THE ACCURACY OF THE INFORMATION CONTAINED HEREIN, AND THE SAME IS SUBMITTED SUBJECT TO ERRORS, OMISSIONS, CHANGE OF PRICE, RENTAL OR OTHER CONDITIONS, PRIOR SALE, LEASE OR FINANCING, OR WITHDRAWAL WITHOUT NOTICE, AND OF ANY SPECIAL LISTING CONDITIONS IMPOSED BY OUR PRINCIPALS NO WARRANTIES OR REPRESENTATIONS ARE MADE AS TO THE CONDITION OF THE PROPERTY OR ANY HAZARDS CONTAINED THEREIN ARE ANY TO BE IMPLIED.





The Larson Building and Garage is a dynamic mixed-use property featuring 52 multifamily residential units and a 647-space parking garage. The ground floor is anchored by a vibrant mix of local and national retailers, including Blaze Pizza, Chipotle Mexican Grill, and Panda Express. Ideally situated just one block from UNL and next to Tower Square, the property enjoys high visibility and energy from the iconic Ascent illuminated public art installation, creating a lively urban environment for residents, visitors, and businesses alike.

#### Suite 110

- \$22/SF NNN
- 1,053 SF

#### Suite 150

- \$22/SF NNN
- 5,778 SF
- Drive-thru window
- Break room
- Conference room
- 8 offices
- Can be demised



1317 Q STREET

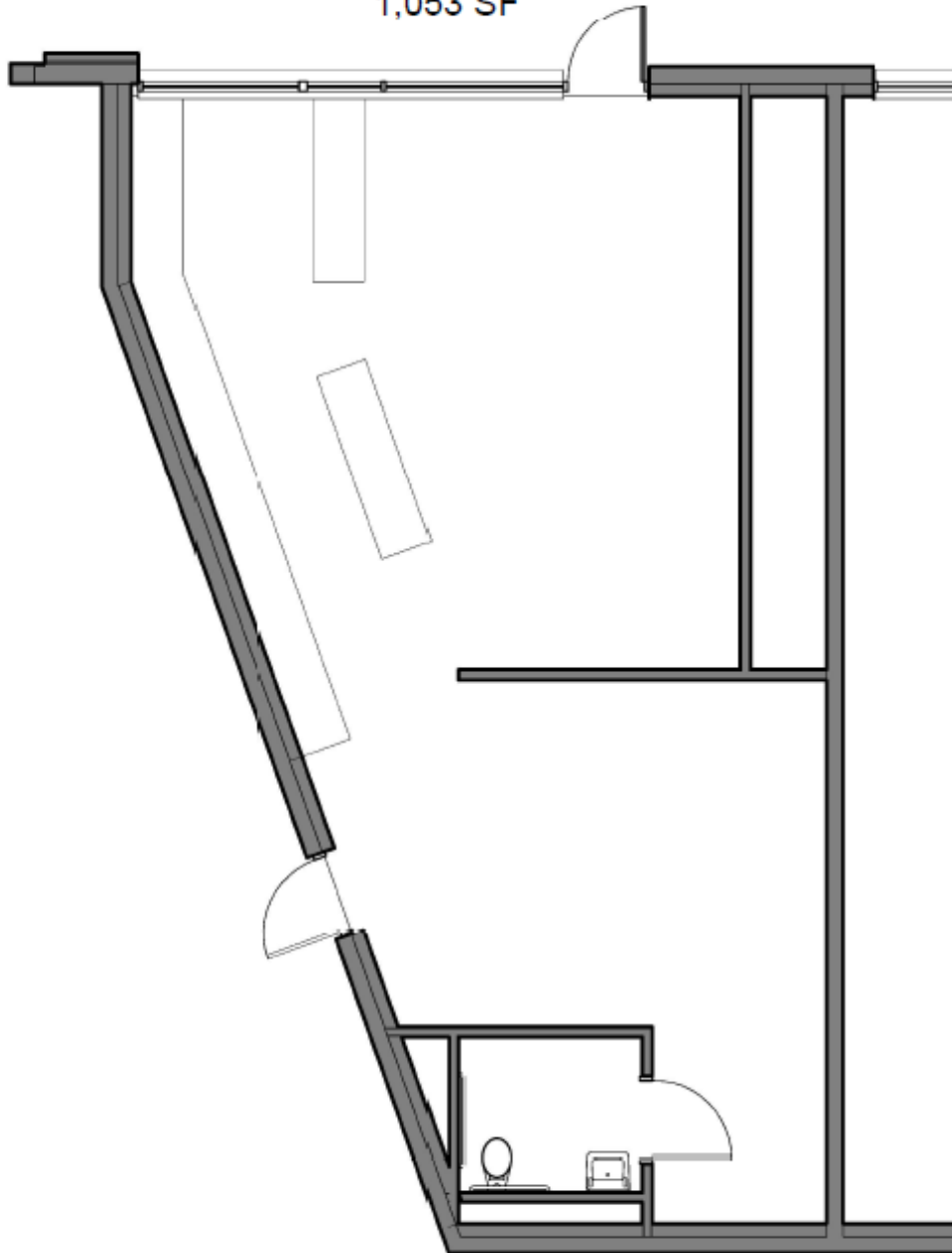
Suite  
110

Suite  
150

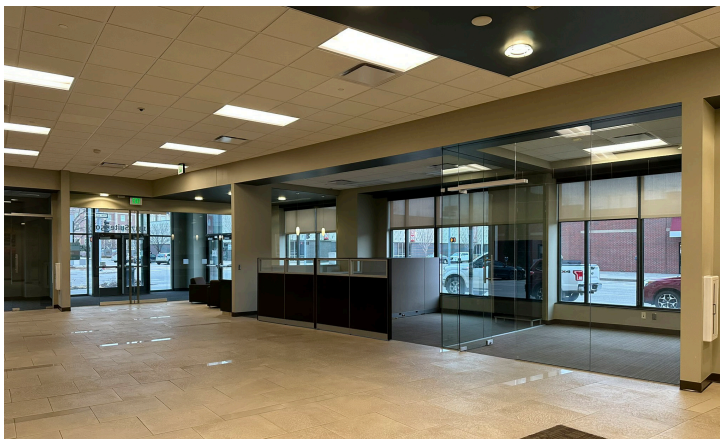


Union Bank Place | 1248 O Street, Ste. 550, Lincoln, NE 68508 | (402) 441-5800 | [www.naifmarealty.com](http://www.naifmarealty.com)

1317 Q STREET  
SUITE 110  
1,053 SF





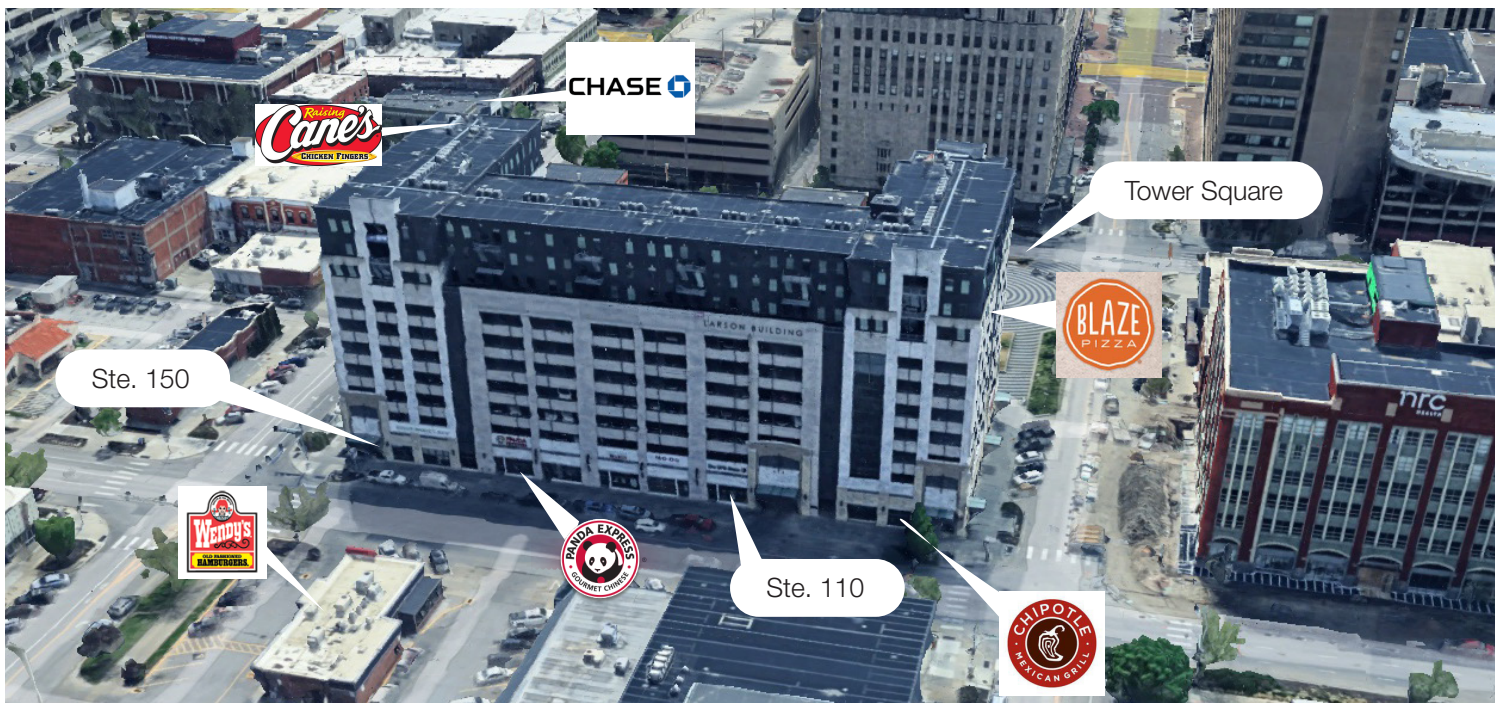


**NAIFMA Realty**

Union Bank Place | 1248 O Street, Ste. 550, Lincoln, NE 68508 | (402) 441-5800 | [www.naifmarealty.com](http://www.naifmarealty.com)







**NAIFMA Realty**

Union Bank Place | 1248 O Street, Ste. 550, Lincoln, NE 68508 | (402) 441-5800 | [www.naifmarealty.com](http://www.naifmarealty.com)