

MEDICAL OFFICE SPACE FOR LEASE



PLUG AND PLAY MEDICAL SPEC SUITES
WHAT MATTERS TO YOU >

LOCATION
EASY ACCESS OFF TOLL ROAD
AND RESTON HOSPITAL

SIZE
2,000-17,300 RSF

SUNSET MEDICAL PLAZA

11107 SUNSET HILLS RD
RESTON, VA 20190

ADDITIONAL FEATURES

- Rare full-floor medical opportunity
- New tenant amenities including covered drop off, renovated lobbies and common areas, conference room, and outdoor patio with seating
- Abundant free surface and garage parking
- Monument/exterior signage opportunities available
- Plug & play medical spec suites available

LEASED BY



3 Bethesda Metro Center, Suite 700 // Bethesda, MD 20814
301.235.1300 // gzrealty.net

OWNED BY

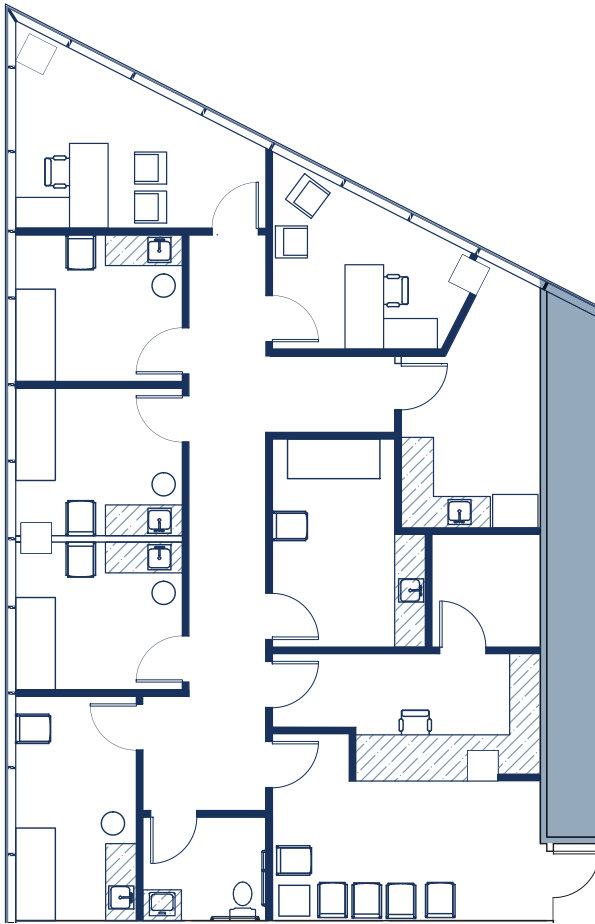


CONTACT US TODAY

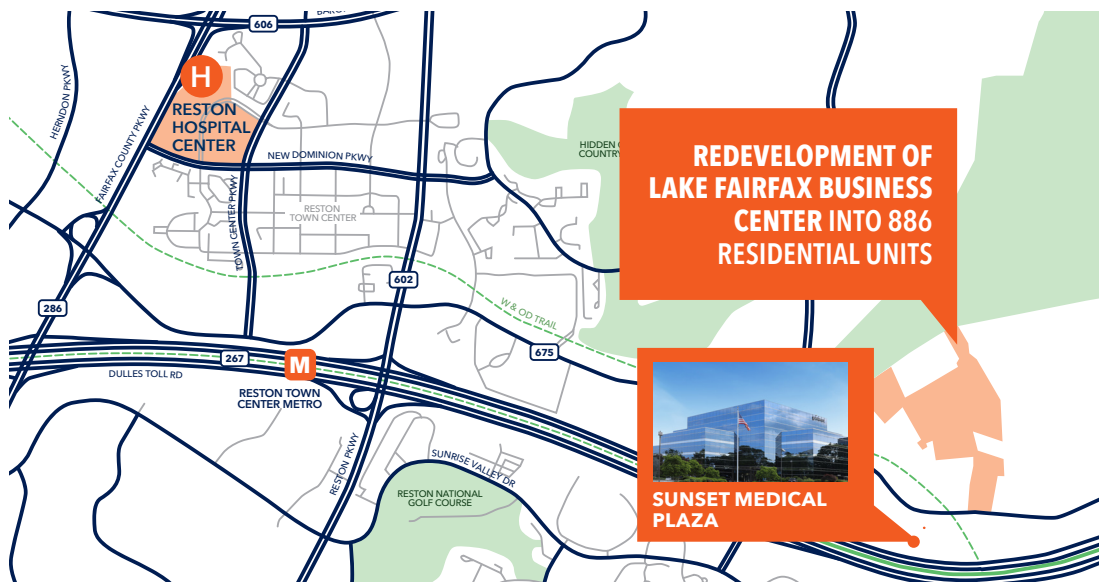
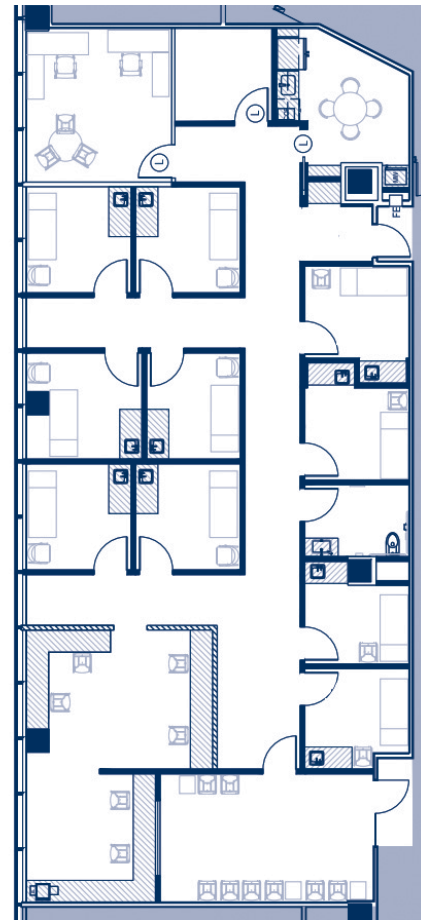
NORA BOWEN
NORA@GZREALTY.NET
703-401-6235

ADRIAN A. DOMINGUEZ
ADRIAN@GZREALTY.NET
703-856-0952

Suite 240 - 2,172 SF



Suite 301 - 3,741 SF



LEASED BY



OWNED BY



CONTACT US TODAY

NORA BOWEN
NORA@GZREALTY.NET
703-401-6235

ADRIAN A. DOMINGUEZ
ADRIAN@GZREALTY.NET
703-856-0952

3 Bethesda Metro Center, Suite 700 // Bethesda, MD 20814
301.235.1300 // gzrealty.net