

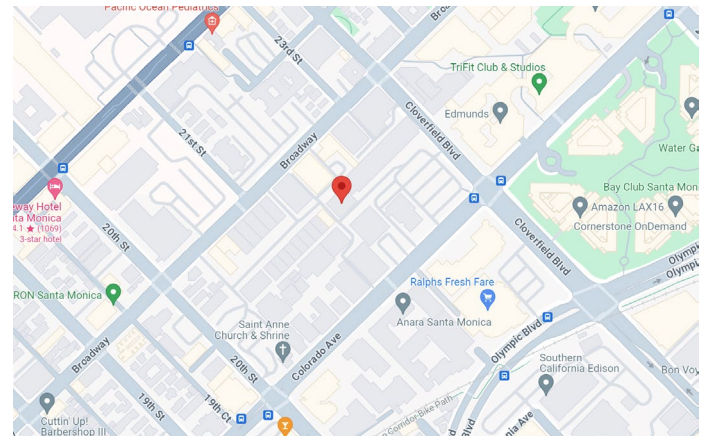
FOR LEASE

2210 Broadway, Santa Monica +/- 8,925 SF Bow Truss Office Building



- Abundant natural light
- Parking for 26 cars
- Private outdoor patio
- High end creative finishes
- Gourmet Kitchen
- Shower & Fireplace
- 11 Private offices
- 2 conference rooms
- Large open workspace
- Exposed high ceiling
- Polished concrete floor
- Located in the heart of Santa Monica within walking distance of restaurants, shopping, etc.

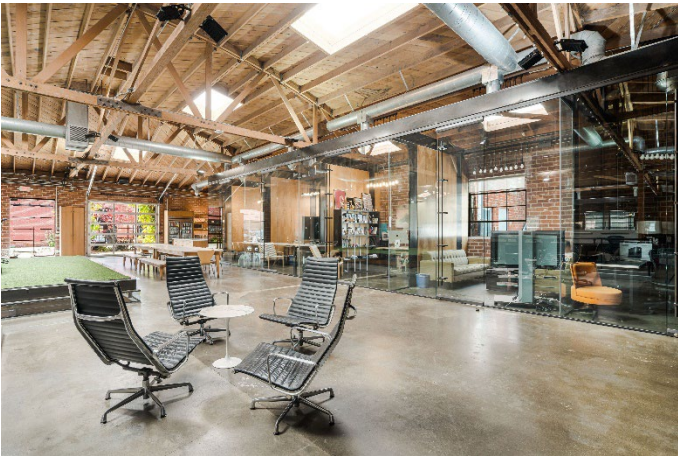
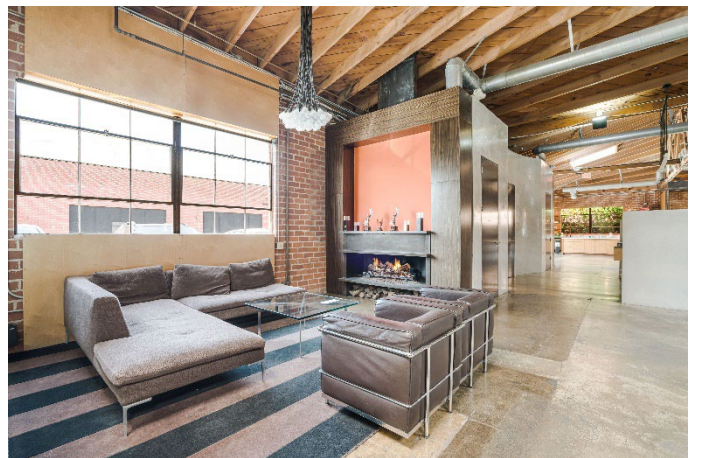
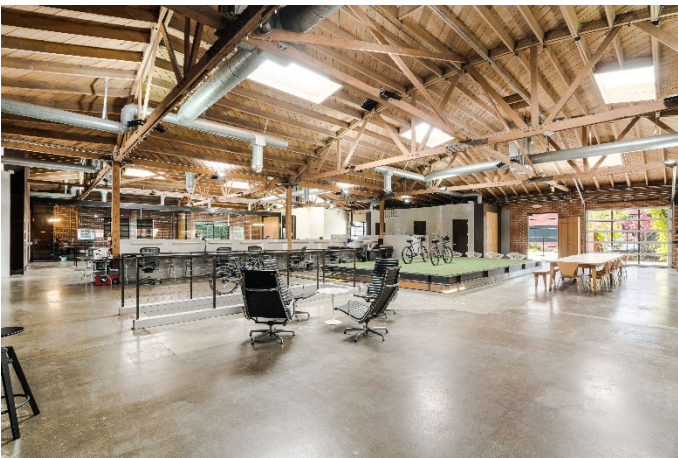
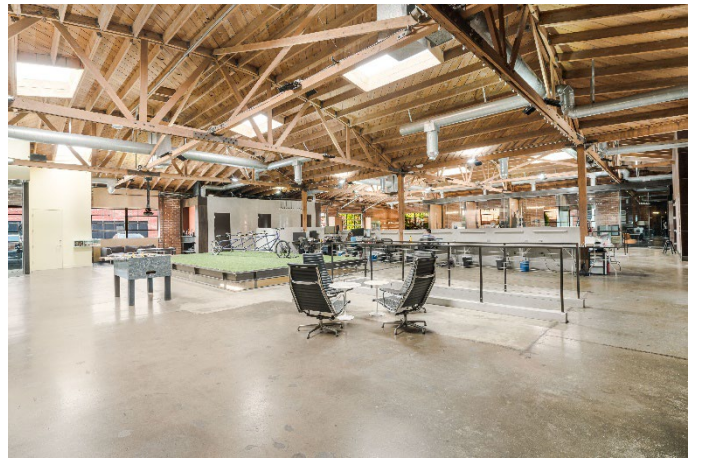
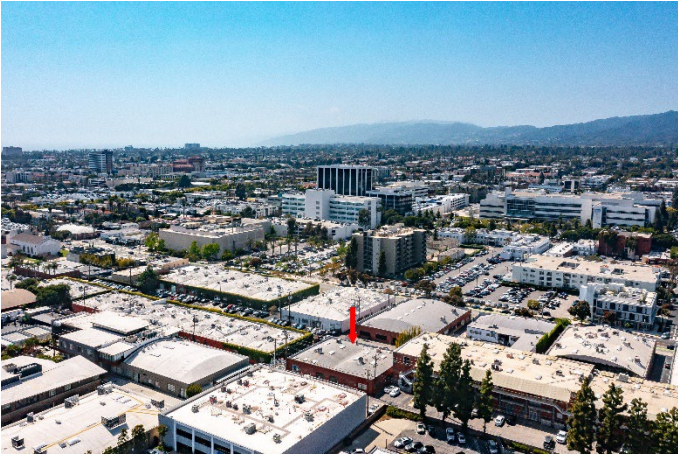
www.2210broadway.com

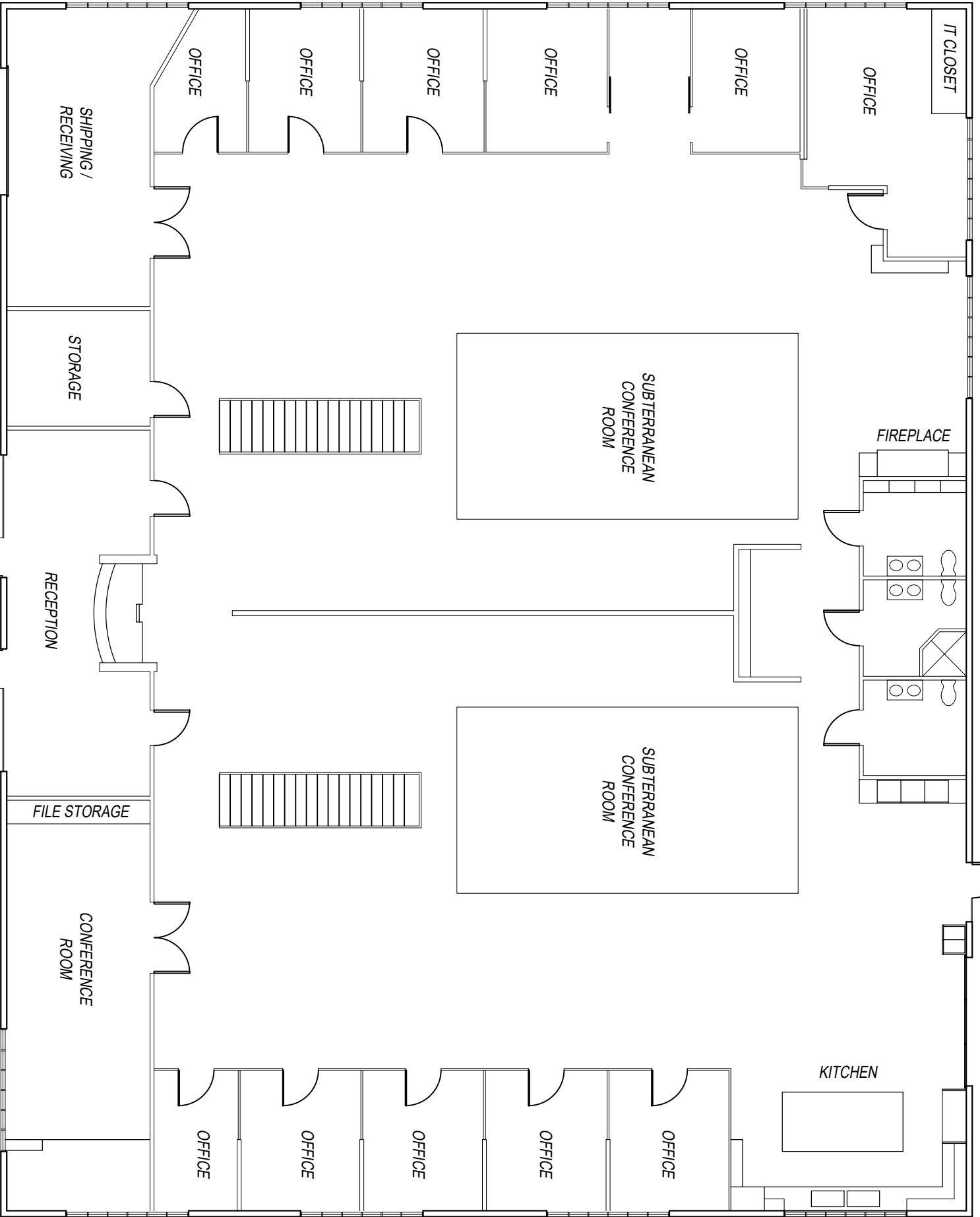


Rate: \$4.50 PSF NNN

CONTACT: Ned Geoghegan
(818) 519-0592
NGEOGHEGAN@SANDHILLMGMT.COM
DRE # 01262292

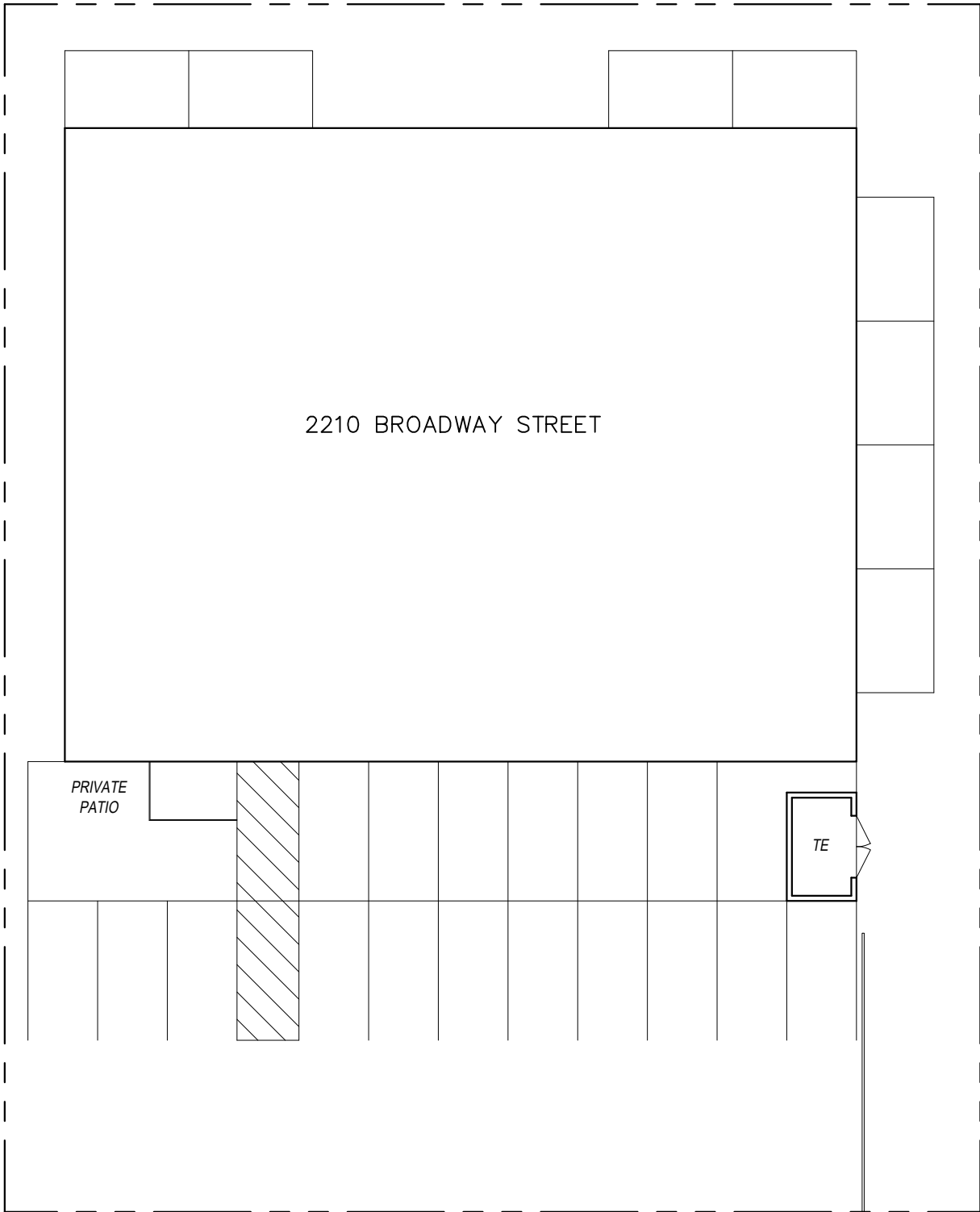
Although all information furnished is from sources deemed reliable, this information has not been verified and no warranty is made as to the accuracy thereof. Terms of sale or lease and availability are subject to change or withdrawal without notice. No liability of any kind is to be imposed on the broker or owner herein.





FLOOR PLAN - 2210 Broadway

Scale: 3/32" = 1'-0"



SITE PLAN - 2210 Broadway

SANTA MONICA, CA 90404

Scale: 1"=20'-0"