

UP TO 2X THE NORMAL COMMISSION  
FOR QUALIFIED TENANTS!



Office

# 6600 Taft Street

## FOR LEASE

6600 Taft Street | Hollywood, FL 33024

Availability: Former Bank - 7,261 SF  
Former Bank Drive-Thru - 300 SF

For More Information

Timothy Merriman Jr.

+1 954 668 5315

[tmerriman@naiftl.com](mailto:tmerriman@naiftl.com)

For more listings visit: [naimia-ftl.com/properties](http://naimia-ftl.com/properties)





# 6600 Taft Street

6600 Taft Street | Hollywood, FL 33024



## Property Features

- Aggressive lease rates
- Prime location on Taft Street
- Secured building with 24-hour access
- Abundant parking – 4/1,000 square feet
- Locally owned and professionally managed

## Location Features

- Prominent frontage and exposure
- Daily traffic count over 18,000 vehicles per day
- Convenient access to Florida's Turnpike, I-95, & SR 84
- Minutes from the Fort Lauderdale-Hollywood International Airport (FLL)
- Nearby restaurants and shopping

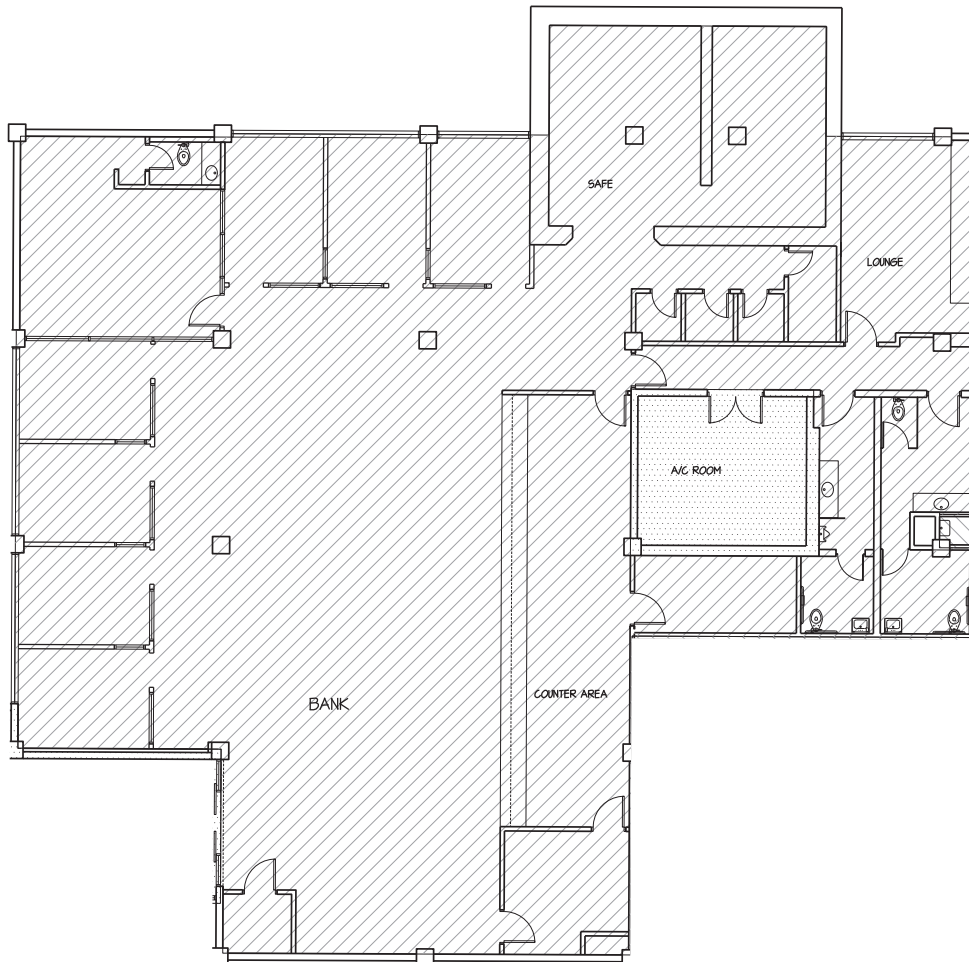


---

# Floor Plan

6600 Taft Street | Hollywood, FL 33024

## FORMER BANK - 7,261 SF



---

### For More Information

Timothy Merriman Jr.

+1 954 668 5315

tmerriman@naiftl.com



9655 South Dixie Highway, Suite 300, Miami, FL 33156

+1 305 938 4000

naimia-ftl.com

NO WARRANTY OR REPRESENTATION, EXPRESS OR IMPLIED, IS MADE AS TO THE ACCURACY OF THE INFORMATION CONTAINED HEREIN, AND THE SAME IS SUBMITTED SUBJECT TO ERRORS, OMISSIONS, CHANGE OF PRICE, RENTAL OR OTHER CONDITIONS, PRIOR SALE, LEASE OR FINANCING, OR WITHDRAWAL WITHOUT NOTICE, AND OF ANY SPECIAL LISTING CONDITIONS IMPOSED BY OUR PRINCIPALS NO WARRANTIES OR REPRESENTATIONS ARE MADE AS TO THE CONDITION OF THE PROPERTY OR ANY HAZARDS CONTAINED THEREIN ARE ANY TO BE IMPLIED.