

6300 Tower Lane



Square feet: 6,600

Pricing: \$18/SF/Yr MG

Units 4,5, 15, and 16 Available for Lease

- Modern amenities suitable for various business types, including retail and office spaces.
- High visibility and convenient access to major highways, attracting both foot and vehicle traffic.
- Located in a vibrant area with nearby dining, shopping, and entertainment options for employees and clients.
- Ample parking and flexible leasing terms tailored to meet diverse business needs.

**FOR LEASING
INFORMATION**

(941)356.1613

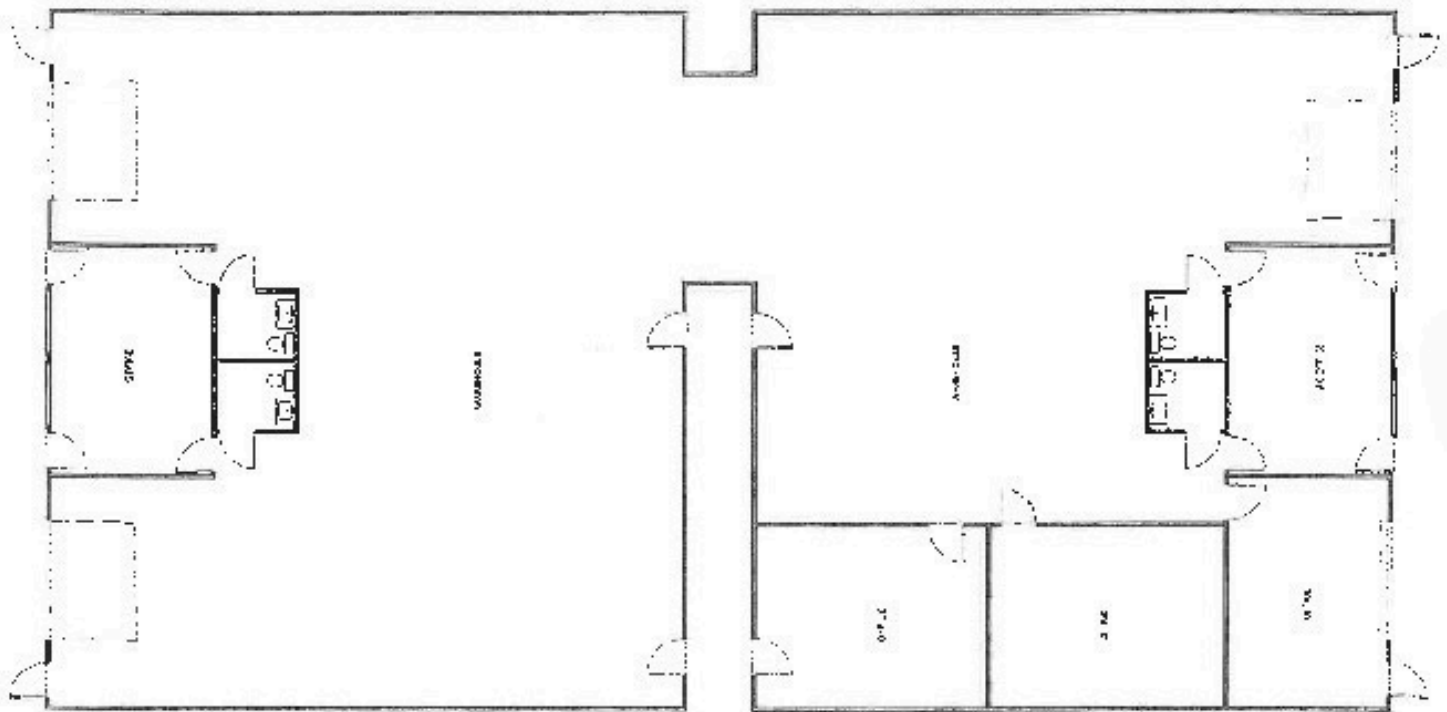
Troy Robbins
Troy@RobbinsCommercial.com



Harry E. Robbins Associates, Inc
Troy@RobbinsCommercial.com
941.356.1613

The property boasts modern amenities and is ideal for a variety of business types, from retail to office spaces. Tenants will benefit from high visibility and convenient access to major highways, making it an excellent location for attracting both foot and vehicle traffic.

Additionally, the surrounding area offers a vibrant mix of dining, shopping, and entertainment options, creating a dynamic environment for employees and clients alike. With ample parking and flexible leasing terms, this space is designed to meet the diverse needs of today's businesses. Don't miss the opportunity to establish your presence in this prime location. Reach out today for a viewing and more information.



Harry E. Robbins Associates, Inc
Troy@RobbinsCommercial.com
941.356.1613