



4969
CENTRE POINTE
DRIVE

3,500 - 6,693 SF AVAILABLE

FOR LEASE

REID DAVIS, CCIM, SIOR
Managing Principal
(843) 277-4326
RDavis@Lee-Associates.com

PETE HARPER, CCIM
Principal
(843) 329-0108
PHarper@Lee-Associates.com

CAMERON YOST, CCIM
Vice President
(843) 814-7236
CYost@Lee-Associates.com

 **LEE &
ASSOCIATES**
COMMERCIAL REAL ESTATE SERVICES

PROPERTY OVERVIEW

PROPERTY OVERVIEW

Discover an exceptional opportunity to elevate your business at the prestigious Oaks at Centre Pointe, located in the heart of Charleston, South Carolina. This prime office space for lease offers a perfect blend of sophistication, accessibility, and modern amenities, making it an ideal choice for businesses seeking a distinctive and productive workspace.

Suite 201 is 6,960 SF and can be divisible to 3,500 SF. The suite features a reception area, spacious break room, eight (8) private offices, conference room and large bull pen along the window line that could accommodate up to 40 cubicles.



ADDRESS

4969 Centre Pointe Dr,
N. Charleston, SC 29418

AVAILABLE SPACE

Suite 201
3,500 - 6,963 SF

LEASE RATE

\$31.00/SF, Full Service

PARKING

Ample Surface
Parking Spaces

YEAR BUILT

2006

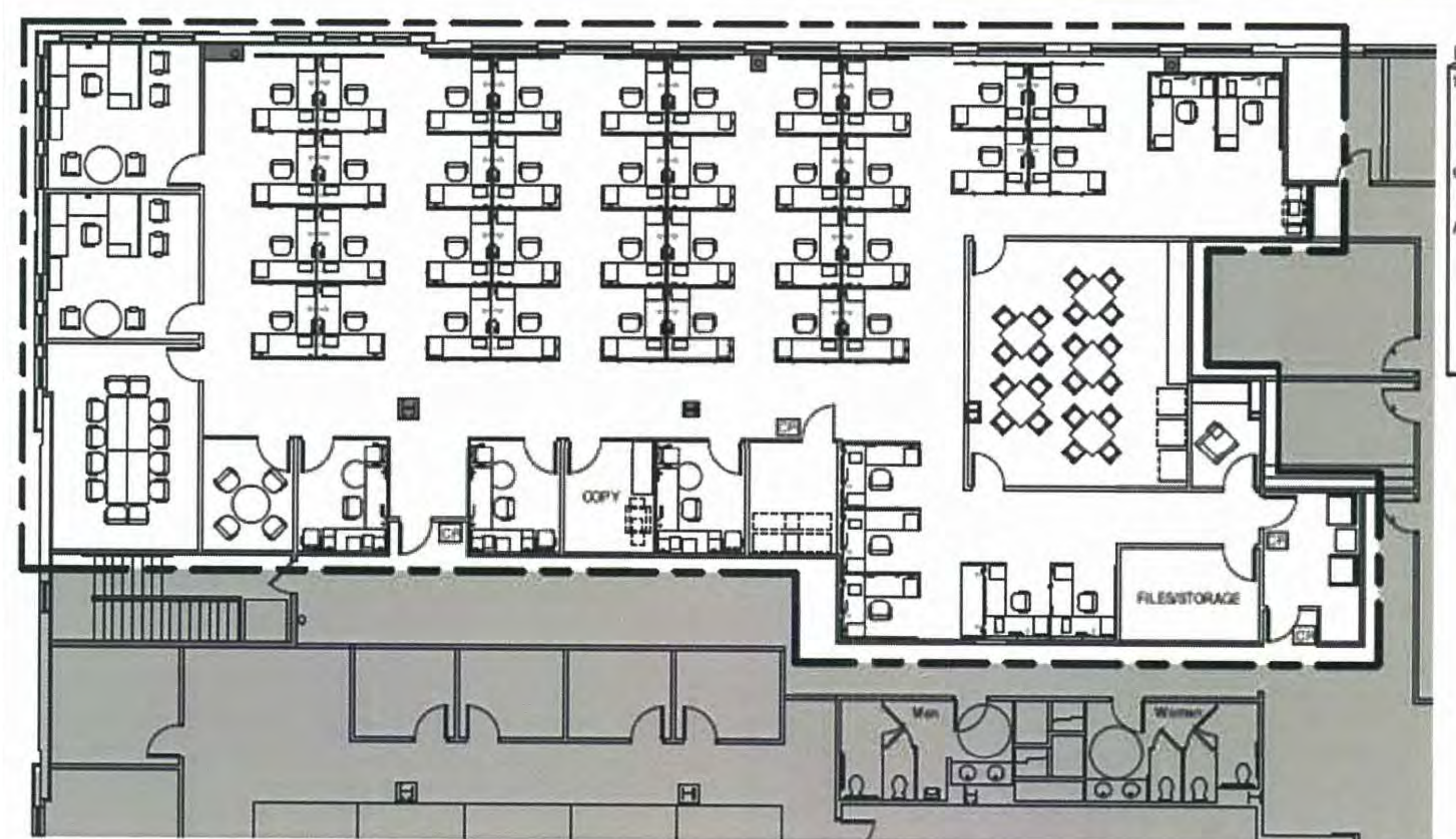
TMS

400-00-00-088

PROPERTY PHOTOS



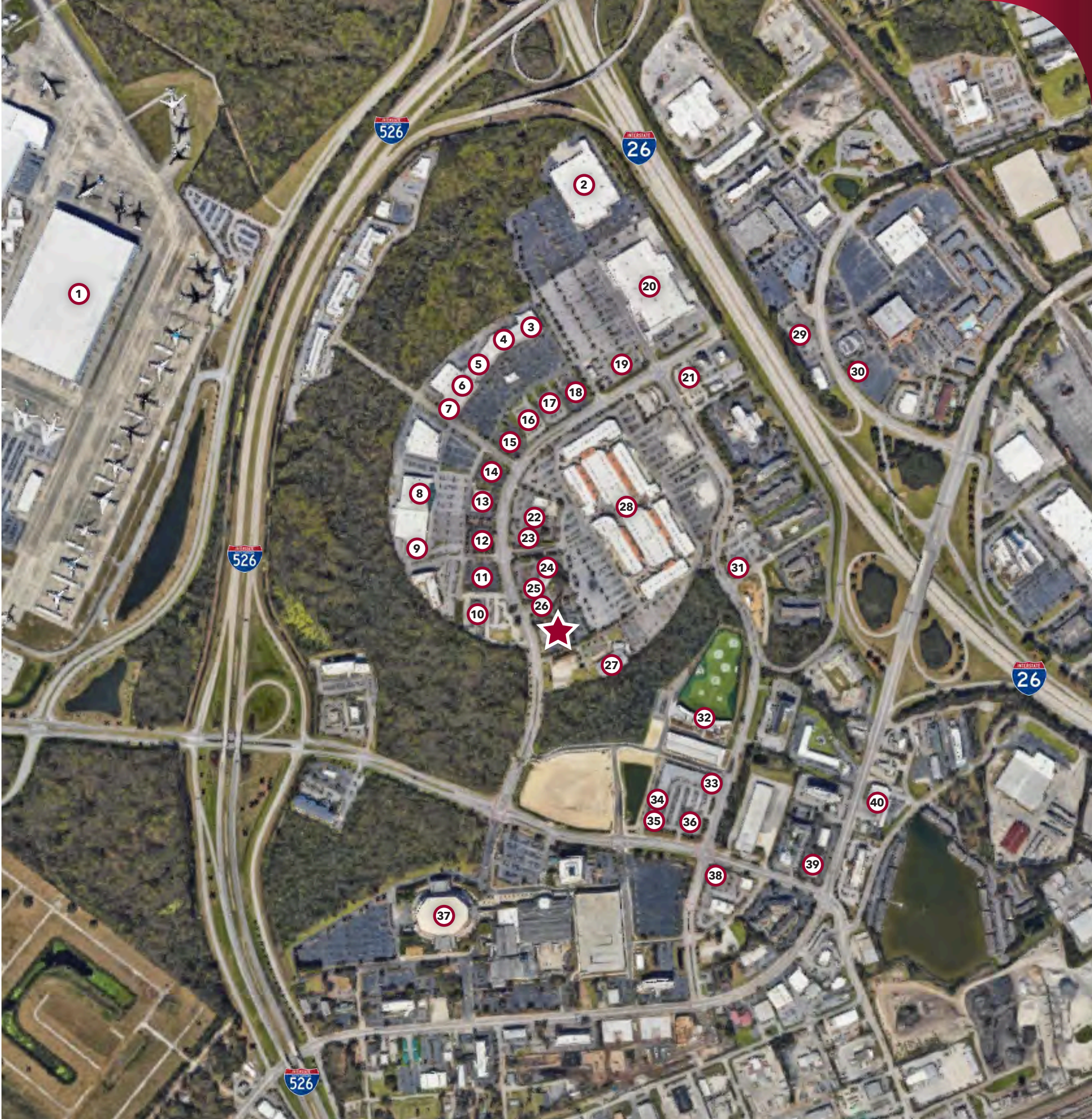
SUITE 201 FLOOR PLAN



LOCATION OVERVIEW

★ Discover an

- | | |
|--------------------------|---------------------------------|
| 1 The Boeing Company | 21 Culver's |
| 2 Sam's Club | 22 Chipotle |
| 3 Staples | 23 Arby's |
| 4 Dollar Tree | 24 Buffalo Wild Wings |
| 5 Carolina Crab House | 25 FiveGuys |
| 6 Ashley HomeStore | 26 Domino's Pizza |
| 7 McAlister's Deli | 27 North Charleston Fire Museum |
| 8 Sportsman's Warehouse | 28 Tanger Outlets |
| 9 La-Z-Boy | 29 Red Lobster |
| 10 Golden Corral | 30 Cowboy Brazilian Steakhouse |
| 11 Jim 'N Nick's Bar-B-Q | 31 Mellow Mushroom |
| 12 Southstate Bank | 32 Top Golf |
| 13 Thai Palm | 33 Panera Bread |
| 14 Huey Magoos Chicken | 34 Poke Bros |
| 15 Moe's Southwest Grill | 35 Jersey Mike's Subs |
| 16 Istanbul Shish Kabob | 36 Starbucks |
| 17 IHOP | 37 North Charleston Coliseum |
| 18 Chick-fil-A | 38 Bonefish Grill |
| 19 Panda Express | 39 Firehouse Subs |
| 20 Walmart Supercenter | 40 Rusty Bull Brewing |



MARKET OVERVIEW

126,751

TOTAL POPULATION
WITHIN 5 MILES

53,814

TOTAL HOUSEHOLDS
WITHIN 5 MILES

DRIVE TIMES:

- Charleston INT'L Airport 6 min
- I-26 3 min
- I-526 2 min
- Summerville 16 min
- Downtown Charleston 10 min
- West Ashley 7 min
- Daniel Island 10 min

4969

CENTRE POINTE
DRIVE

\$81,013

AVERAGE HH INCOME
WITHIN 5 MILES

6,160

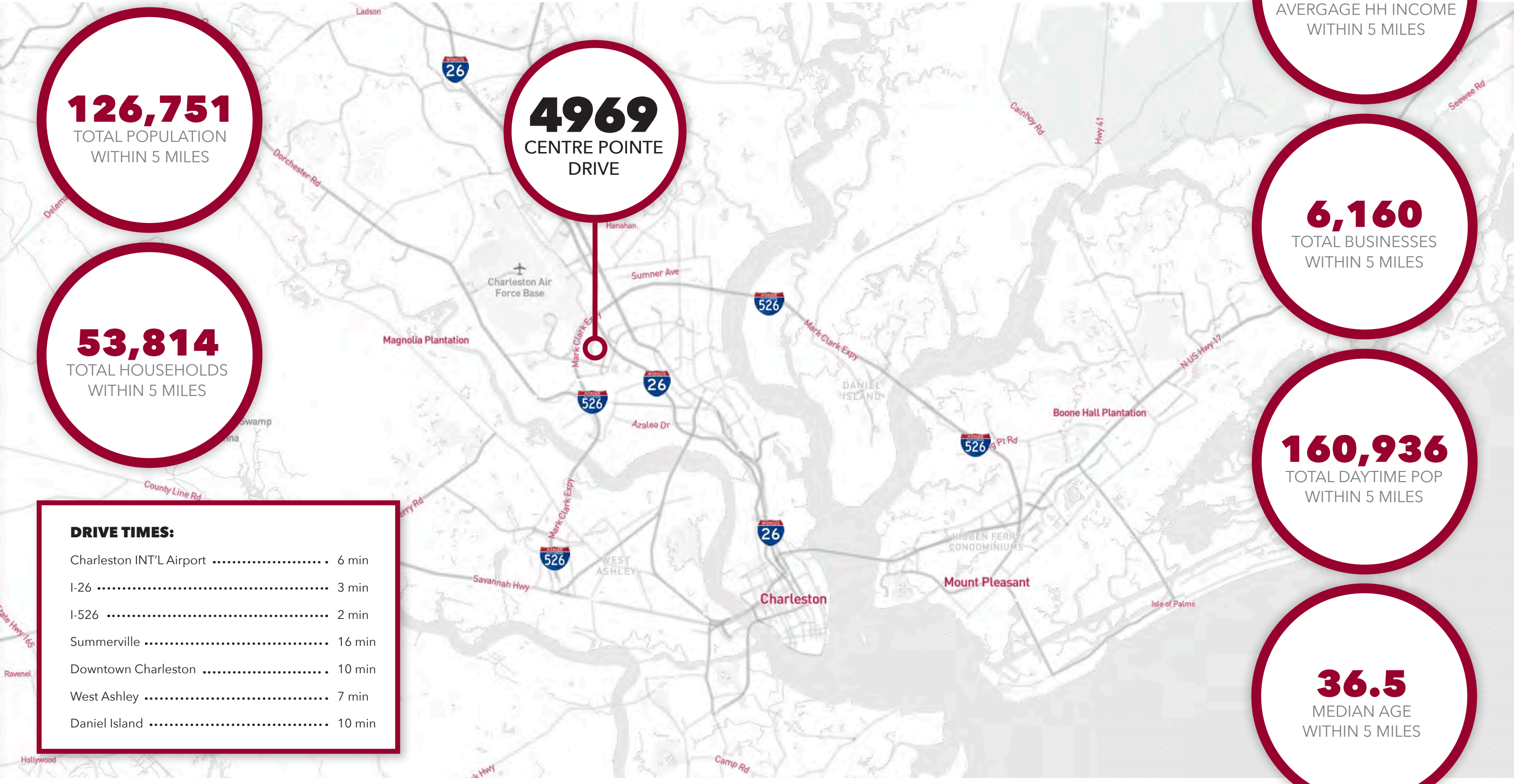
TOTAL BUSINESSES
WITHIN 5 MILES

160,936

TOTAL DAYTIME POP
WITHIN 5 MILES

36.5

MEDIAN AGE
WITHIN 5 MILES



4969

CENTRE POINTE DRIVE

All information furnished regarding property for sale, rental or financing is from sources deemed reliable, but no warranty or representation is made to the accuracy thereof and same is submitted to errors, omissions, change of price, rental or other conditions prior to sale, lease or financing or withdrawal without notice. No liability of any kind is to be imposed on the broker herein.

REID DAVIS, CCIM, SIOR
Managing Principal
(843) 277-4326
RDavis@Lee-Associates.com

PETE HARPER, CCIM
Principal
(843) 329-0108
PHarper@Lee-Associates.com

CAMERON YOST, CCIM
Vice President
(843) 814-7236
CYost@Lee-Associates.com

 **LEE &
ASSOCIATES**
COMMERCIAL REAL ESTATE SERVICES