

For Lease

2.7 Acres Available

16520 Worthley Drive
San Lorenzo, CA

AVAILABLE

LEASED

Worthley Drive

Colliers

Accelerating success.



GREENLAW
PARTNERS

Greig F. Lagomarsino, SIOR
Vice Chairman
+1 510 433 5809
greig.lago@colliers.com
CA Lic. No. 01063817

Nick Ousman, SIOR
Executive Vice President
+1 510 433 5820
nick.ousman@colliers.com
CA Lic. No. 01908981

Chris Stauber
Associate Vice President
+1 510 287 3121
chris.stauber@colliers.com
CA Lic. No. 02167419

Colliers
1999 Harrison Street, Suite 1750
Oakland, CA 94612
+1 510 986 6770
colliers.com

Location



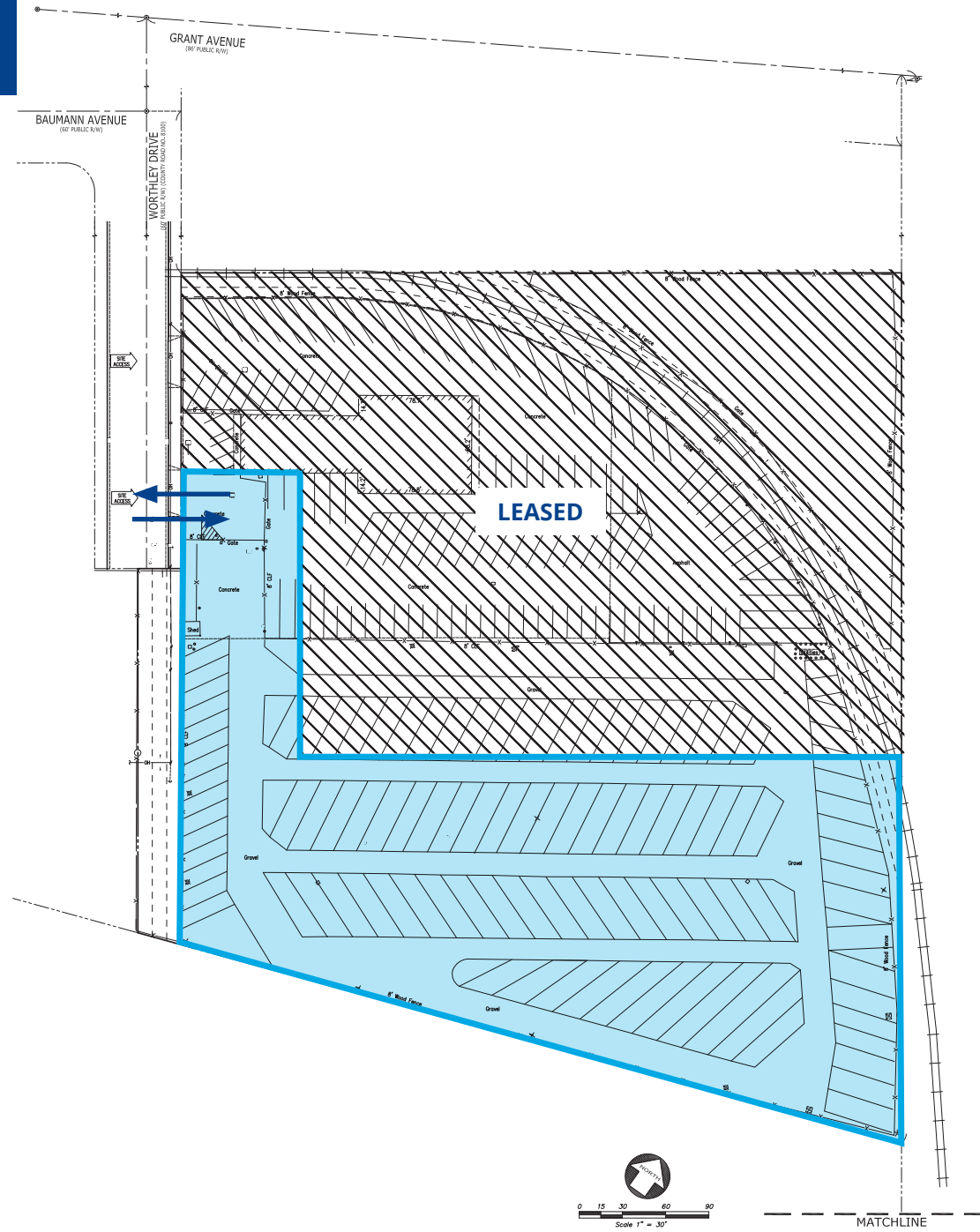
Key Highlights

- Rare 2.7 acres (117,612 SF) fully fenced yard ideal for outdoor storage and parking uses
- Rarely available low coverage site in prime East Bay location
- In Close proximity to Oakland international Airport, Port of Oakland and the Bay Bridge
- Zoned Heavy Industrial (M-2)
 - Includes uses of manufacturing, processing, or assembly plant, any industrial operation, research laboratory, warehouse, distribution, fulfillment, container, and storage facilities.
- More fully described in Alameda County's Title 17 Zoning, Chapter 17.46 M-2 Districts

Call for pricing and to arrange a tour.

The East Bay area is one of the most sought-after industrial locations in Northern California with over 150,000,000 SF of product. It accounts for almost a third of all industrial tenant activity across Northern California. The San Lorenzo submarket is particularly desirable as it provides unmatched access to the Bay Area. This property marks an extremely rare opportunity in a market with vacancy levels close to historic lows. It represents the only 2+ acre property available within 15 miles of the Port of Oakland with Heavy Industrial Zoning. The property is an ideal fit for equipment rental, transfreight logistics provider, trailer/truck parking, and various other uses.

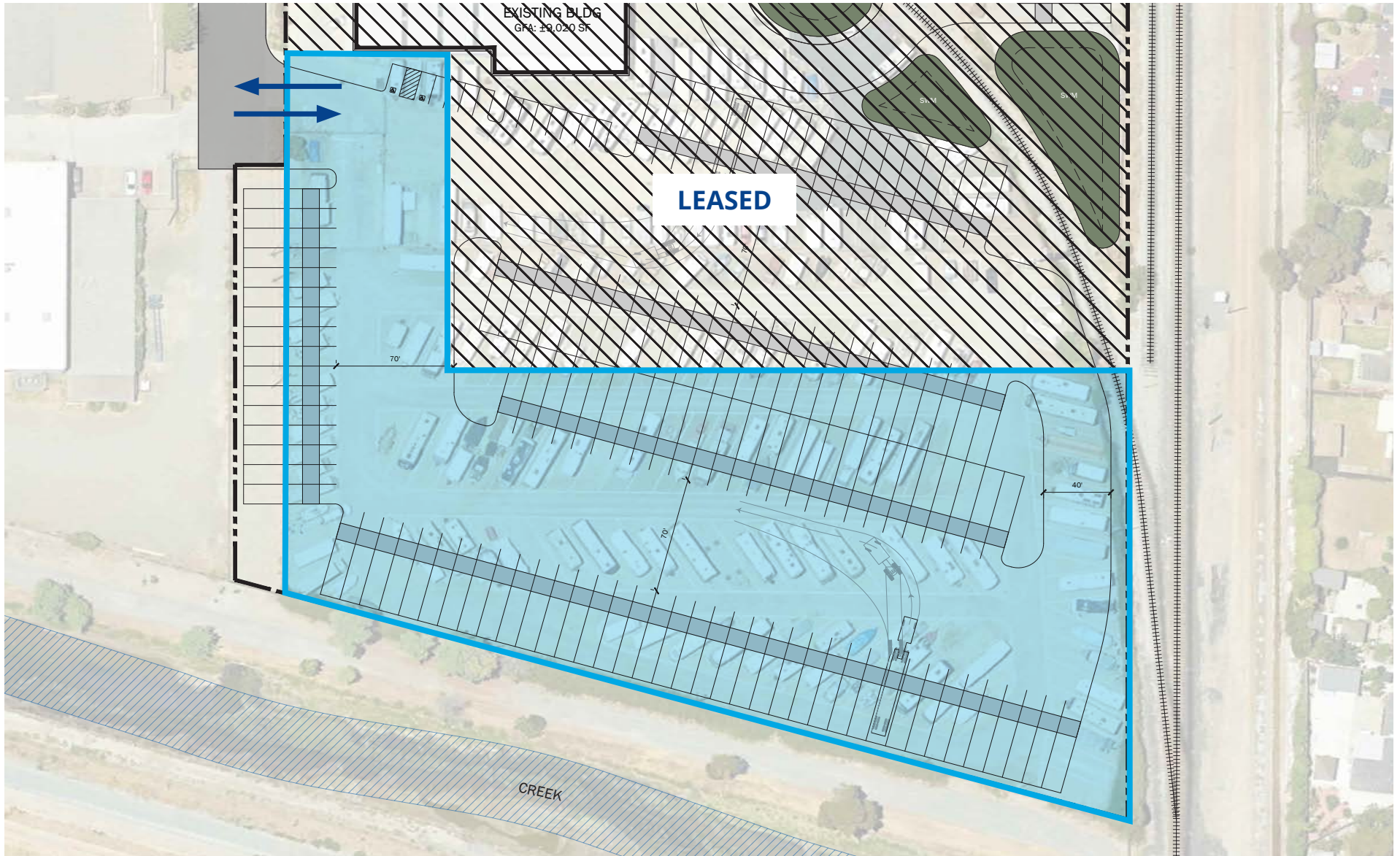
Site Plan



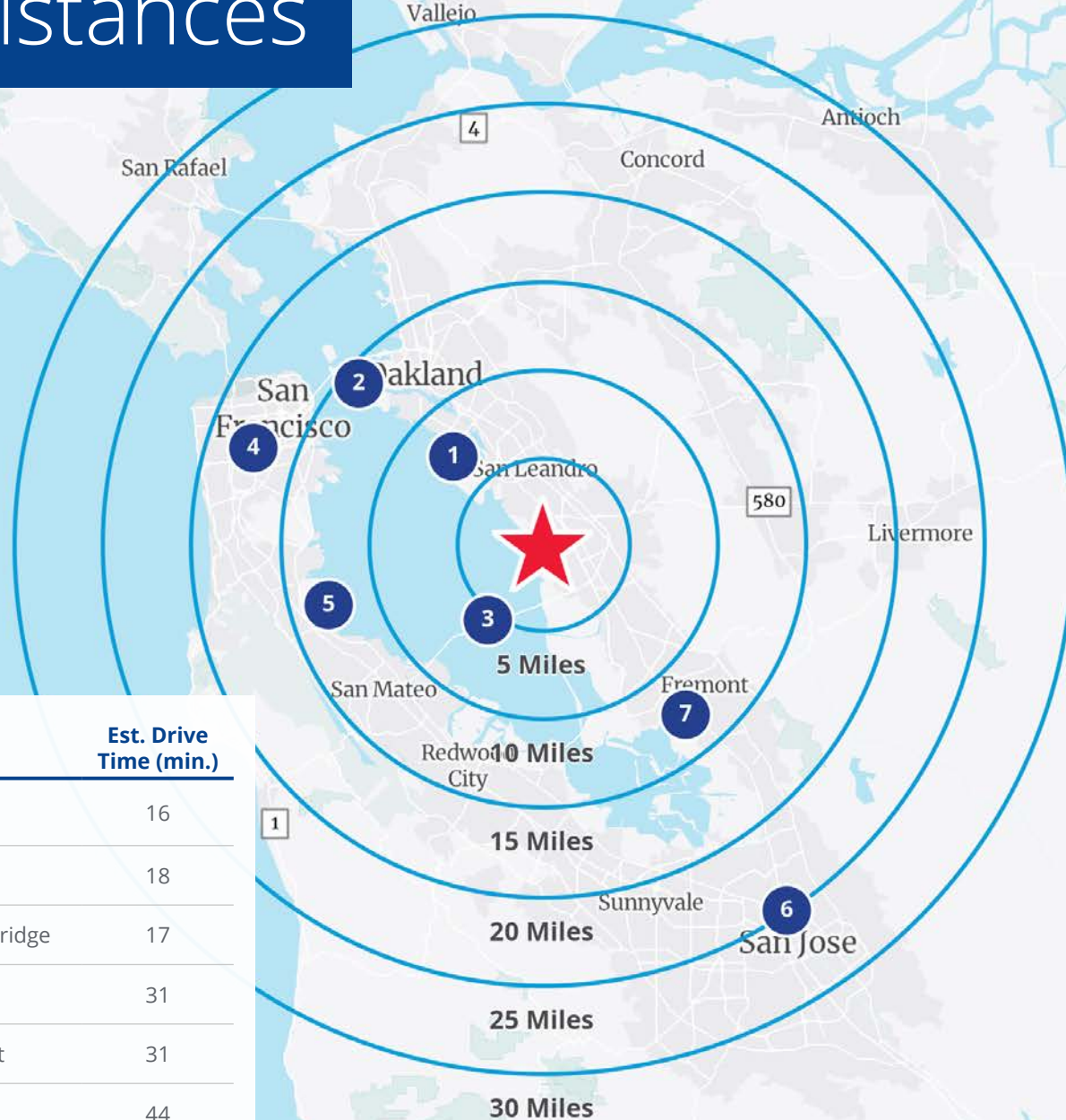
 = Available Space

Hypothetical Parking Plan

 = Available Space



Travel Distances



ID	Location	Est. Drive Time (min.)
1	Oakland Airport	16
2	Port of Oakland	18
3	Hwy 92/San Mateo Bridge	17
4	San Francisco	31
5	San Francisco Airport	31
6	San Jose	44
7	Fremont	28





Greig F. Lagomarsino, SIOR
Vice Chairman
+1 510 433 5809
greig.lago@colliers.com
CA Lic. No. 01063817

Nick Ousman, SIOR
Executive Vice President
+1 510 433 5820
nick.ousman@colliers.com
CA Lic. No. 01908981

Chris Stauber
Associate Vice President
+1 510 287 3121
chris.stauber@colliers.com
CA Lic. No. 02167419

Colliers
1999 Harrison Street
Suite 1750
Oakland, CA 94612
colliers.com

