



VACANT LAND FOR SALE

0 Hwy 165
Hollywood, SC 29449

Kip Bowman | Principal | kipbowman@gmail.com
Sara Bodell | Associate | sbodell@cbcatlantic.com



COLDWELL BANKER
COMMERCIAL
ATLANTIC



PRICE
\$69,000



ACRES
0.40 Acres



TAX ID
163-00-00-314



ZONING
Zoned Industrial in the
Town of Hollywood, SC



COUNTY
Charleston County



VEHICLES PER DAY
SCDOT 4,000 VPD 2023

PROPERTY OVERVIEW

Wooded 0.4 Acre lot zoned Industrial in the Town of Hollywood. Can be used for residential. Septic permit applied for. Agent is the owner.



AGNES BALDWIN LIFE INT.
‡ PATRICIA B. DIXON
PID: 188-00-00-212
DB. E174 PG. 358
PB. L17 PG. 0142

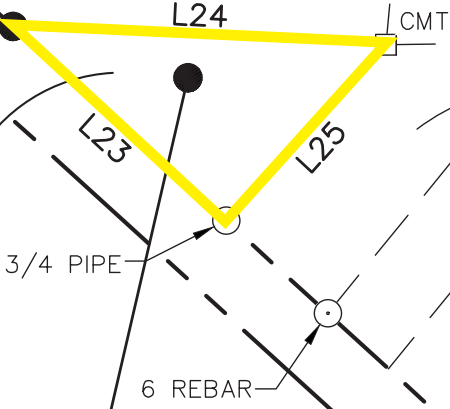
FARMS AT LONGLEAF CORPORATION
PID: 191-00-00-076
DB. V659 PG. 679
PB. L PG. 53

MORECROP LLC
PID: 163-00-00-031
DB. 0201 PG. 903
PB. Y PG. 33

COMCAST OF GEORGIA
SOUTH CAROLINA II LLC.
PID: 163-00-00-196
DB. B495 PG. 95
PB. AY PG. 81

FARMS AT L
PID:
DB.
PB.

E
PID:
DB.
PB.



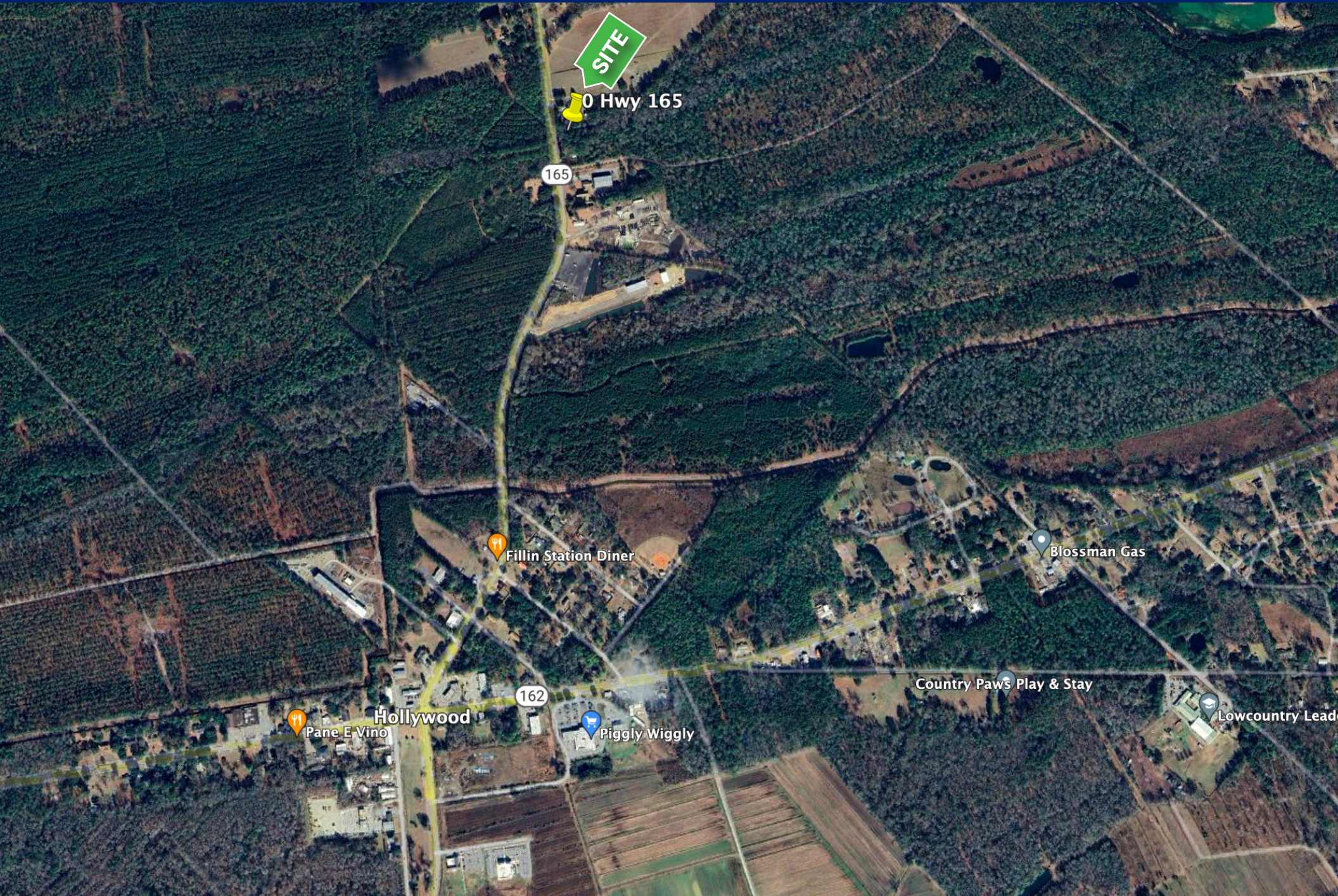
#5 REBAR (BENT 40 DEG)

S83°04'13"E 1282.5'

TRACT 2A
AREA: 2,989,167.74 SQ. FT
(68.621 AC. TOTAL)
(0.414 AC. THIS PORTION)

A

AREA MAP





SITE

0 Hwy 165 | Hollywood, SC 29499

VACANT LAND FOR SALE

Kip Bowman
Principal
(C) 843.437.0074
kipbowman@gmail.com

Sara Bodell
Associate
(C) 864.903.2731
sbodell@cbsatlantic.com



**COLDWELL BANKER
COMMERCIAL
ATLANTIC**

3506 W Montague Ave Suite 200
North Charleston, SC 29418
843.744.9877
cbsatlantic.com | cbcretailatlantic.com

This information has been obtained from sources believed reliable but has not been verified for accuracy or completeness. Coldwell Banker Commercial Atlantic makes no guarantee, representation or warranty and accepts no responsibility or liability as to the accuracy, completeness, or reliability of the information contained herein. You should conduct a careful, independent investigation of the property and verify all information. Any reliance on this information is solely at your own risk.

The information contained herein should be considered confidential and remains the sole property of Coldwell Banker Commercial Atlantic at all times. Although every effort has been made to ensure accuracy, no liability will be accepted for any errors or omissions. Disclosure of any information contained herein is prohibited except with the express written permission of Coldwell Banker Commercial Atlantic.