



1600 Pearl Street

Suite 106, Boulder, CO

Boutique Retail Space on Pearl Street's East End

Chris Boston, CCIM, MBA

cboston@gibbonswhite.com

(303) 586-5930

Kegan McNutt

kegan@gibbonswhite.com

(303) 586-5929

www.gibbonswhite.com

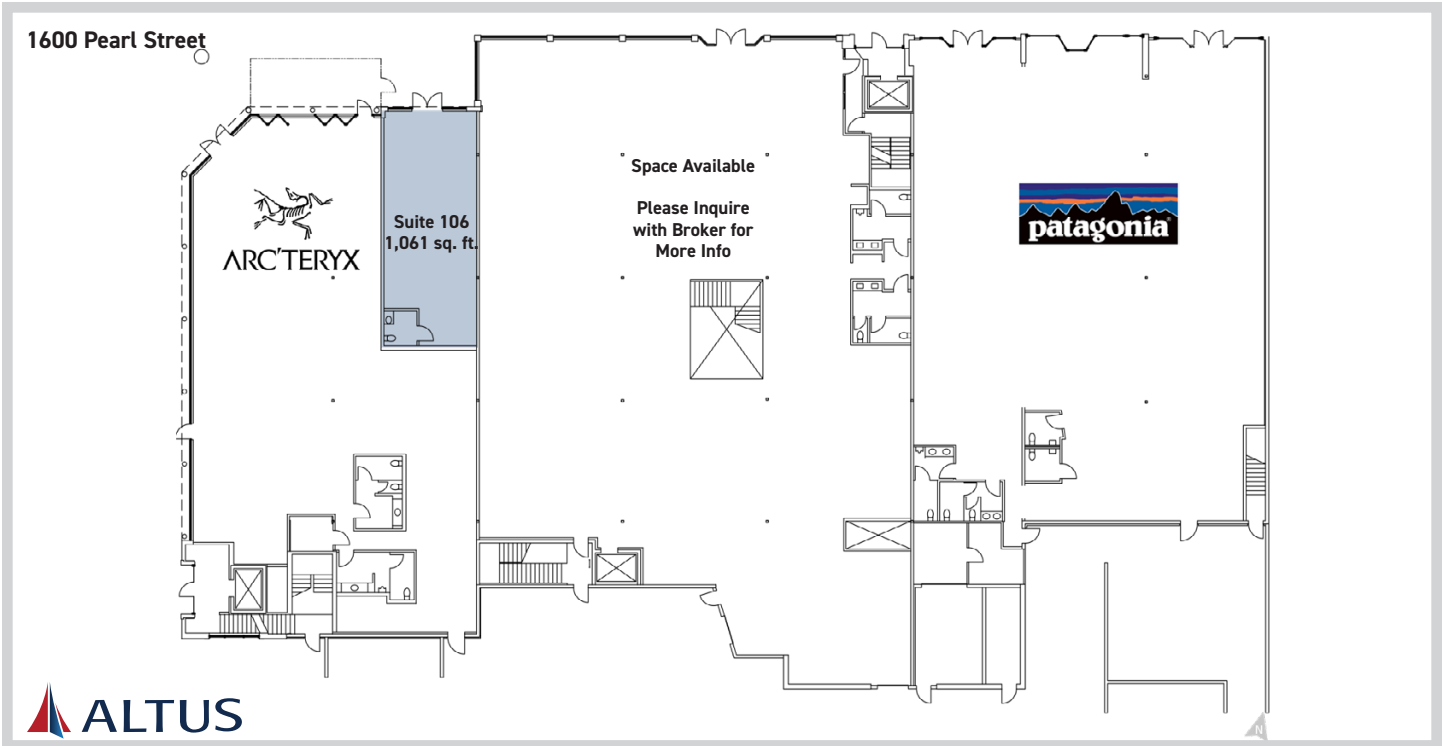
[Property Info & Gallery](#)

[View Map](#)

Available Space	1,061 sq. ft.
Lease Rate / sq. ft.	Negotiable

- Incredible Storefront Exposure on Pearl Street
- Tall, Exposed Ceilings with an Abundance of Natural Light
- Ample Street Parking & Easy Access to the City Parking Garage Across the Street
- Private Restroom within the Space
- Great Neighboring Tenants Including: Arc'teryx, Patagonia, Sweetgreen, Snooze, Maine Shack, & Many More





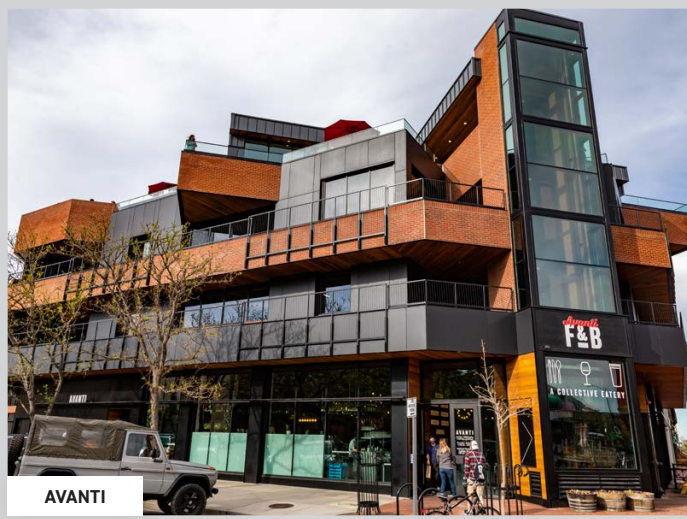
#1 Best Place to Live and Work in America
- Powerlytics



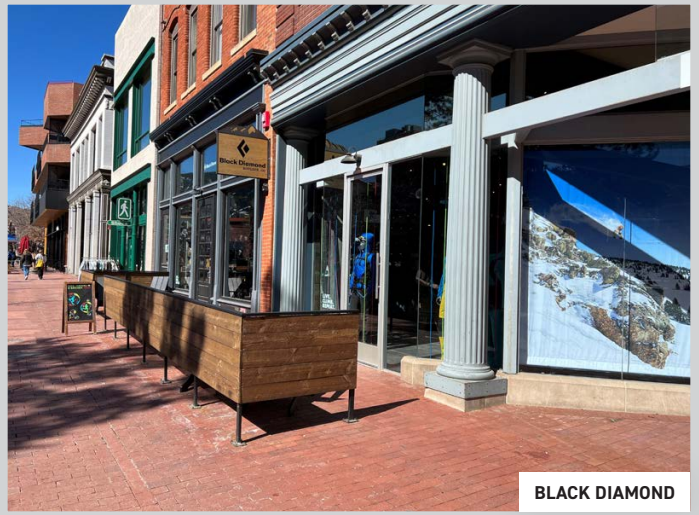
"America's Startup Capital"
- INC.



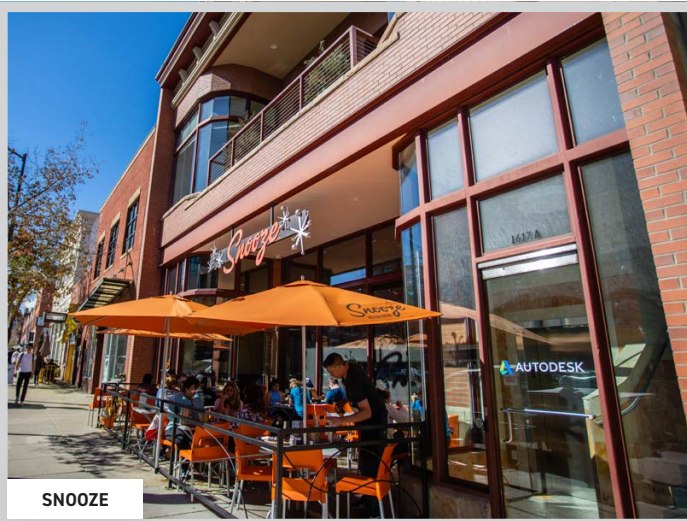
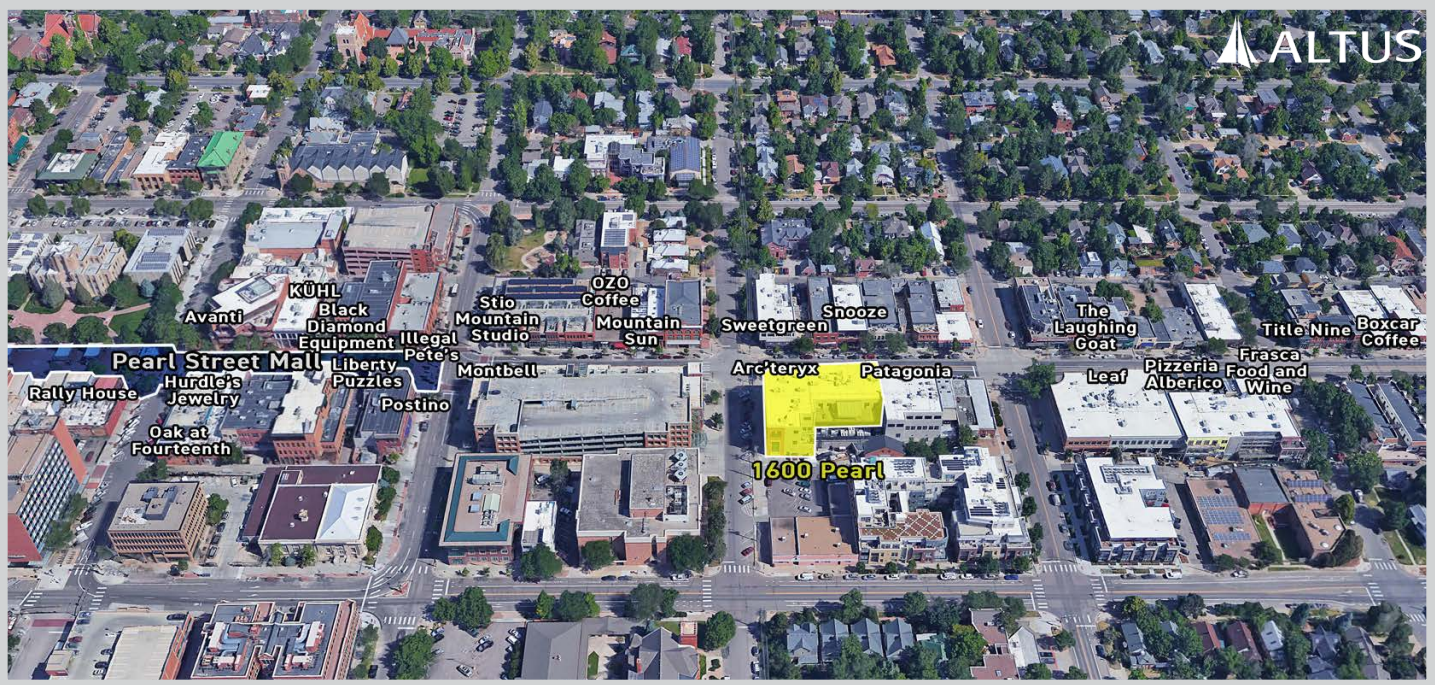
The #1 Happiest City in America
- Forbes



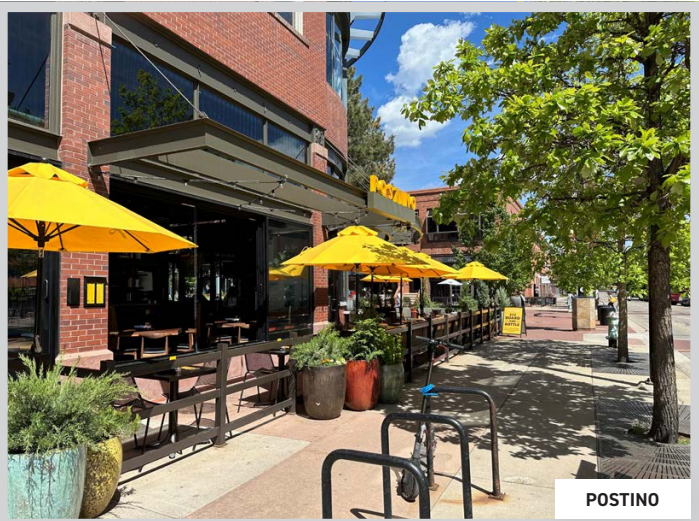
AVANTI



BLACK DIAMOND



SNOOZE



POSTINO