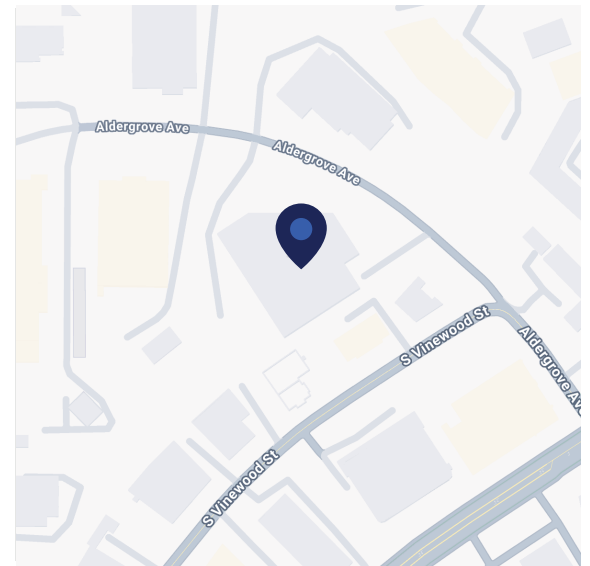




2057 Aldergrove Ave Escondido, CA 92029

Premises:	Approximately 4,200 RSF on the 2nd Floor
Rental Rate:	Negotiable
Availability:	30 Days
Term:	Thru February 2028
Submarket:	Escondido
Built:	1996
Parking:	TBD



Features

- Available with furniture
- Entire 2nd Floor available for sublease
- Natural light
- Warehouse storage potentially available

For more information:



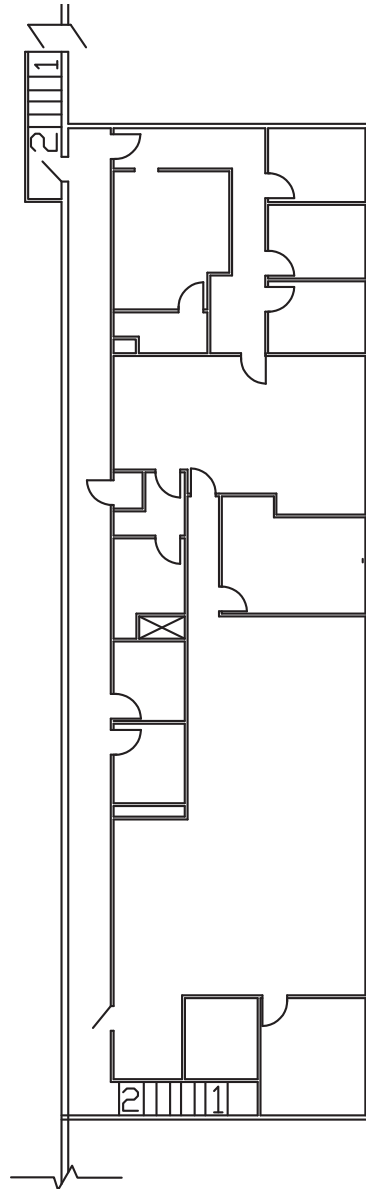
Tommy Friedrich
760.419.3342
tfriedrich@cresa.com

Sublease Available

cresa

2057 Aldergrove Ave
Escondido, CA 92029

Entire 2nd Floor



For more information:



Tommy Friedrich
760.419.3342
tfriedrich@cresa.com

Cresa
2051 San Elijo Avenue
Cardiff, CA 92007