

AVAILABLE

FREESTANDING BUILDING

2231 Henderson Mill Rd, Atlanta, GA 30345

34,550 SF on 3.86 Acres
(24,350 SF first level - 10,200 SF mezzanine)

PROPERTY HIGHLIGHTS

- Former automotive service center
- Ample surface parking
- Column spacing is 24' x 18' on first level
- Elevator access to mezzanine level
- Completed Phase 1 & 2 environmental studies
- Mezzanine can be removed

AREA DEMOGRAPHICS (2025)

	1-MILE	3-MILE	5-MILE
POPULATION	7,558	94,757	304,485
HOUSEHOLDS	3,492	37,972	123,929
AVG HH INCOME	\$147,194	\$134,594	\$122,094

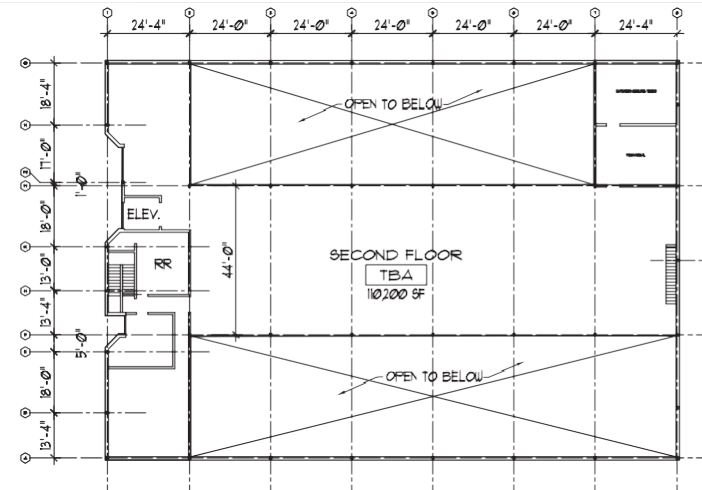
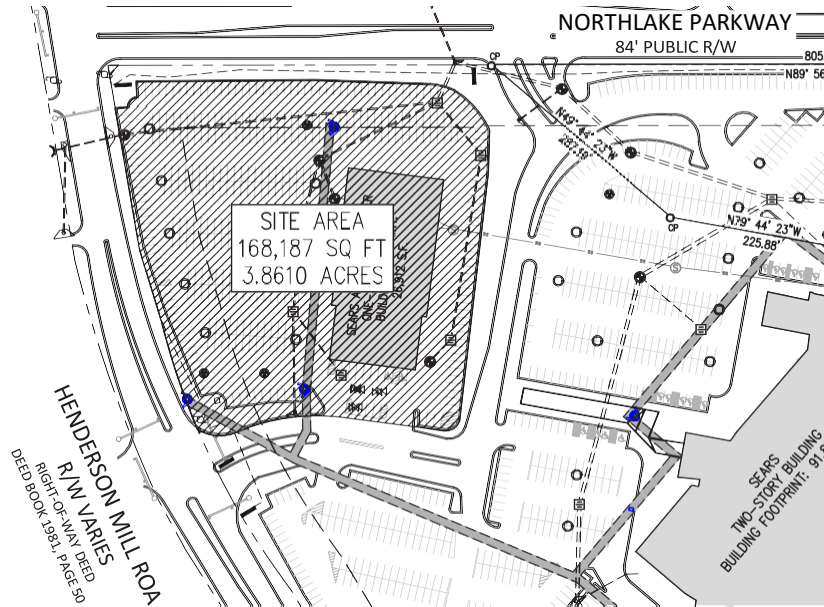
KELLY WILSON

P: 770.655-7123

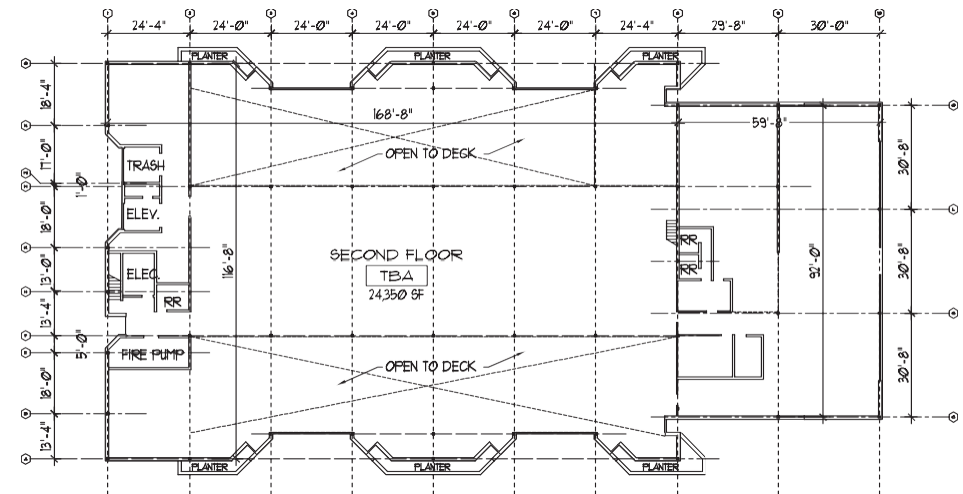
E: kelly@ssgrealtypartners.com


SSG REALTY PARTNERS
LAND INVESTMENT ADVISORS

2231 Henderson Mill Rd, Atlanta, GA 30345



 **2** **SECOND LEVEL**
NORTH SCALE 1/8" = 1'-0"



 **1** **FIRST LEVEL**
SCALE 1/8" = 1'-0"

KELLY WILSON

P: 770.655-7123

E: kelly@ssgrealtypartners.com

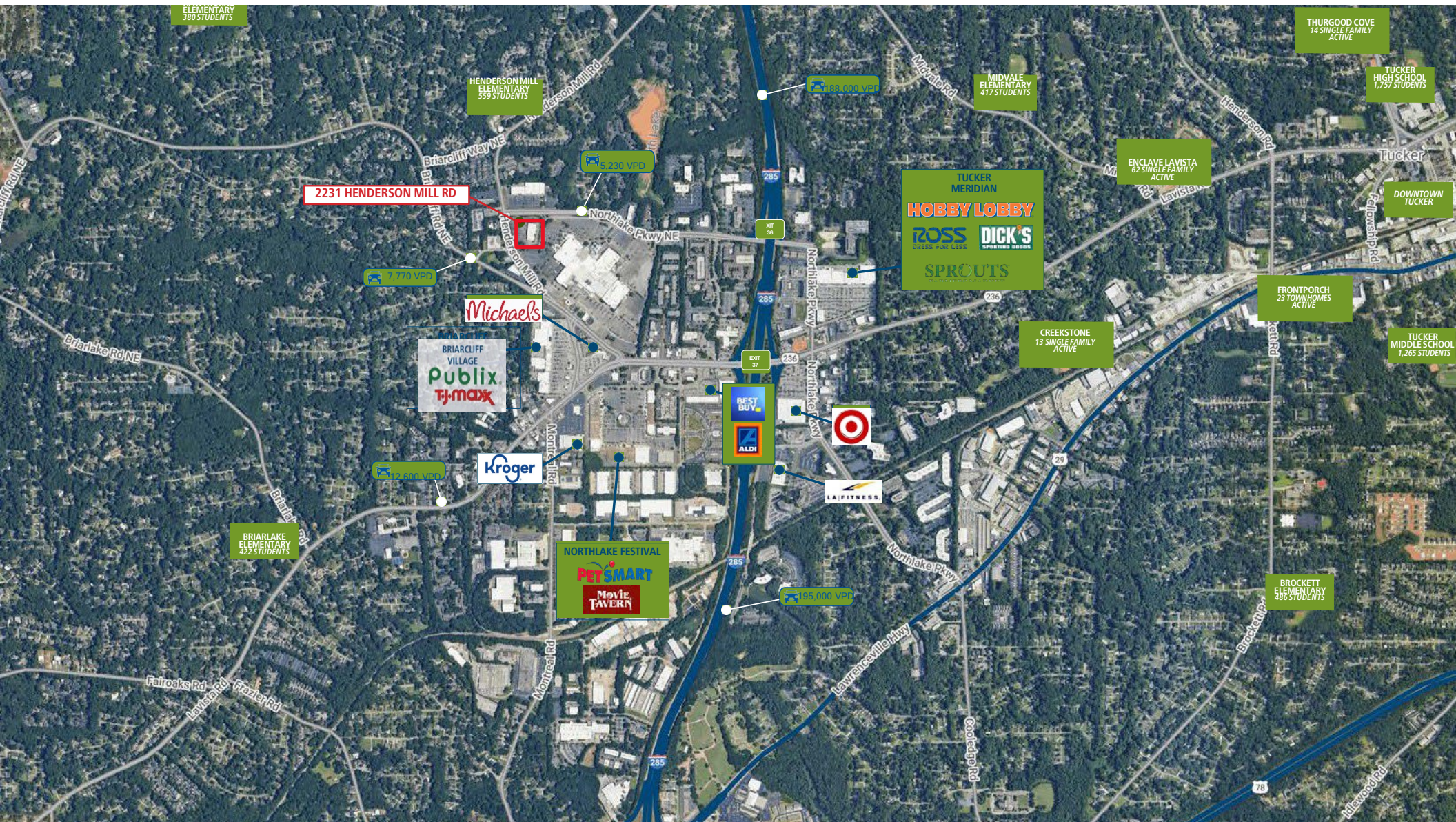


SSG REALTY PARTNERS
LAND INVESTMENT ADVISORS

All rights reserved. While we have no reason to doubt the accuracy of the information provided from sources we deem reliable, but neither ownership nor we guarantee it and therefore assume no liability for errors, omissions or changes to this content. Sources include CoStar, SitesUSA, ESCRI, and Georgia DOT.

FREESTANDING BUILDING

2231 Henderson Mill Rd, Atlanta, GA 30345



KELLY WILSON

P: 770.655-7123

E: kelly@ssgrealtypartners.com


SSG REALTY PARTNERS
LAND INVESTMENT ADVISORS

All rights reserved. While we have no reason to doubt the accuracy of the information provided from sources we deem reliable, but neither ownership nor we guarantee it and therefore assume no liability for errors, omissions or changes to this content. Sources include CoStar, SitesUSA, EScri, and Georgia DOT.