



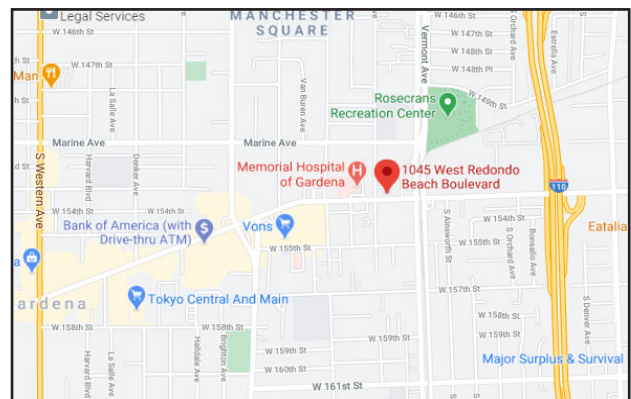
Gardena Professional Medical Plaza | 1045 W. Redondo Beach Blvd | Gardena, CA

Medical & Office Suites For Lease

Available Suites	Sq. Ft.	Rental Rate
Suite 202	19,960 RSF	\$2.25/SF FSG
Suite 240	5,142 RSF	\$2.25/SF FSG
Suite 400*	4,806 RSF	\$2.25/SF FSG
Suite 405*	3,075 RSF	\$2.25/SF FSG
Suite 410*	2,084 RSF	\$2.25/SF FSG
Suite 500/525	8,359 RSF	\$2.25/SF FSG
*Full Floor, Contiguous Space		

Features

- On-site Security Guard and Engineer
- Recent interior improvements to 4th and 5th Floor
- Close to Retail Stores and Restaurants
- Caters to Medical and Office Tenants
- Near Freeways 110, 91, 105 and 405
- Ample parking



Contact

Erik Van't Hof
 (310) 517-4877
 erikv@medicalasset.com
 DRE#: 01055014

Jeffrey D. Cunningham
 (310) 517-4860
 jeffc@medicalasset.com
 DRE#: 01363877

www.medicalasset.com

South Bay
 201 Continental Blvd., Ste. 210
 El Segundo, CA 90245

Downtown Los Angeles
 1400 S. Grand Ave., Ste. 808
 Los Angeles, CA 90015

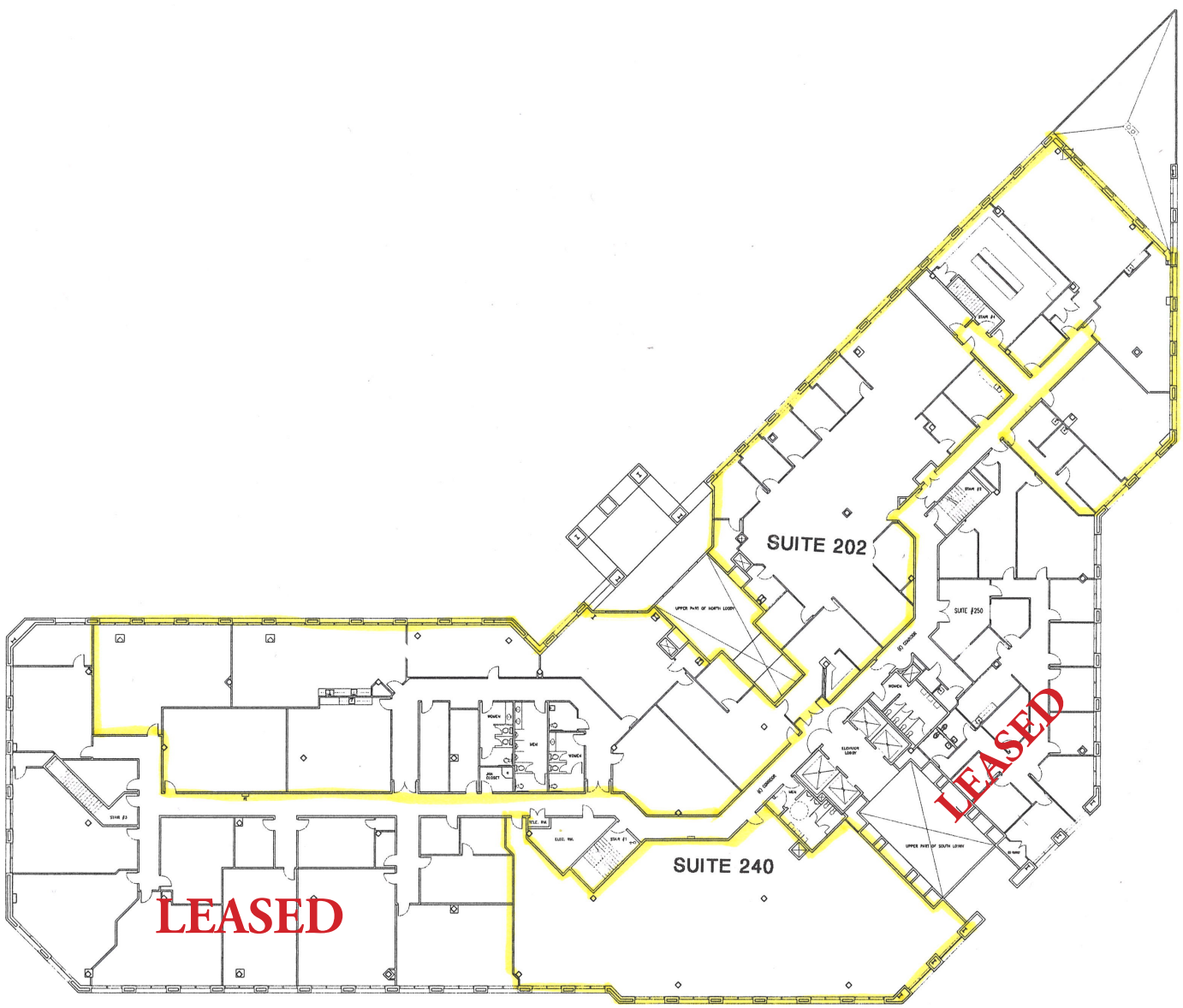
San Fernando Valley
 5411 Etiwanda Ave., Ste. 208
 Tarzana, CA 91356

Long Beach
 1040 Elm Ave., Ste. 308
 Long Beach, CA 90813



Gardena Professional Medical Plaza | 1045 W. Redondo Beach Blvd | Floor Plans

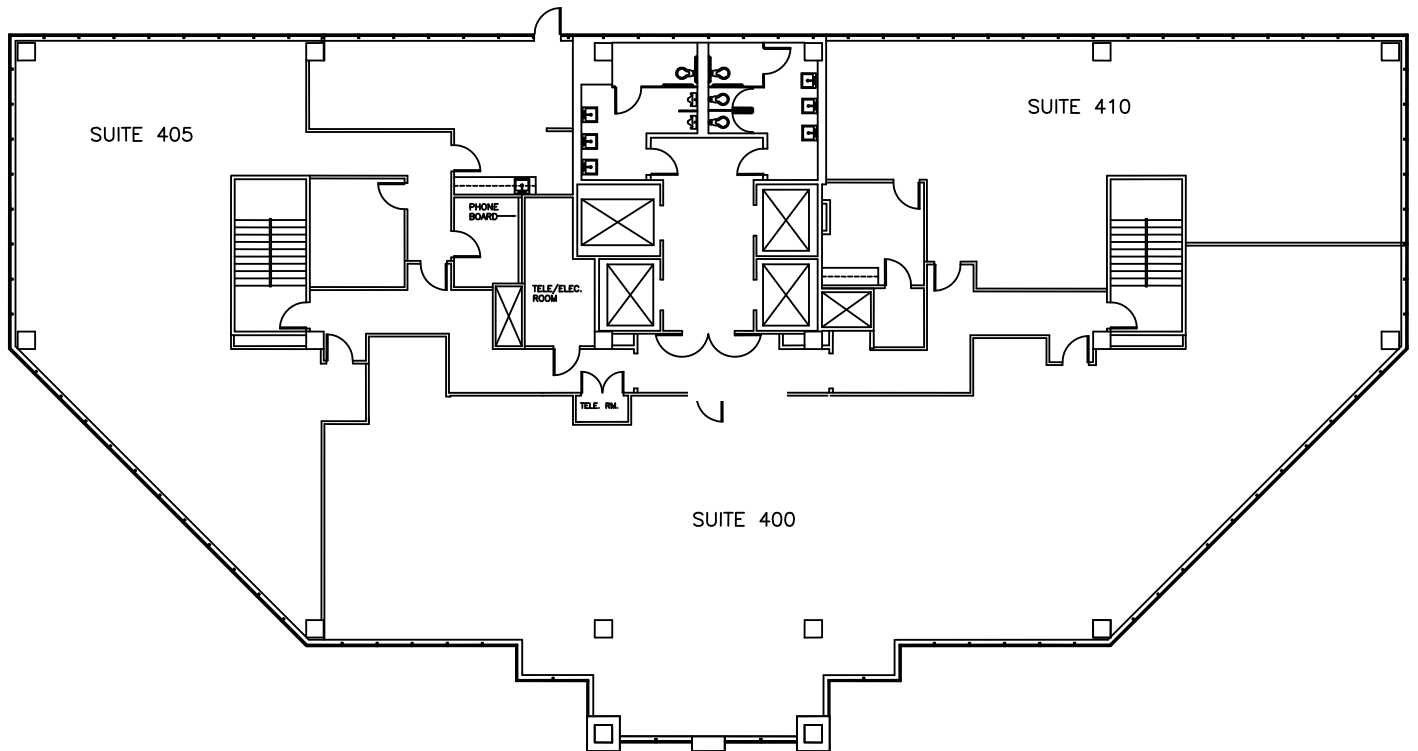
SECOND FLOOR SUITES





Gardena Professional Medical Plaza | 1045 W. Redondo Beach Blvd | Floor Plans

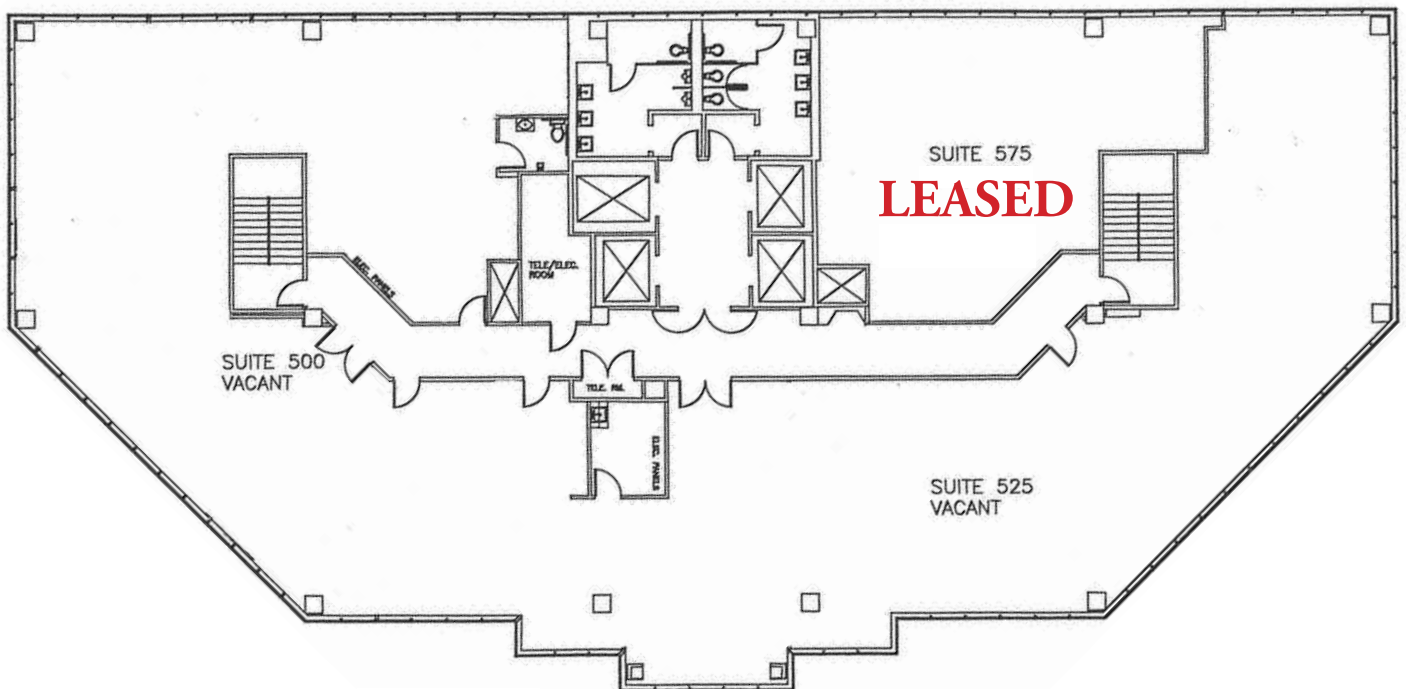
FOURTH FLOOR SUITES





Gardena Professional Medical Plaza | 1045 W. Redondo Beach Blvd | Floor Plans

FIFTH FLOOR SUITES





Gardena Professional Medical Plaza | 1045 W. Redondo Beach Blvd | Floor Plans

RECENT INTERIOR IMPROVEMENTS



The information contained herein is deemed reliable, but cannot be guaranteed by Medical Asset Management and is subject to change.