

**NEWLY
BUILT OUT
DENTAL PRCTICE**

**1030 YORK RD
TOWSON, MD 21204**

DENTAL SUITE

FEATURES

- RATE \$25 NNN
- PLUG AND PLAY DENTAL SUITED
- NO PERMIT OR CONSTRUCTION PERIOD NEEDED
- CHOOSE YOUR OWN EQUIPMENT & CABINERY
- RETAIL SIGNAGE FACING YORK RD
- 15 SURFACE PARKING SPACES



DENTAL OFFICE LEASING

**OPPORTUNITIES
2,428 SF 5 OPERATORY
PLUG & PLAY PRACTICE**



**ANTONIS ALEXANDRIS
PRINCIPAL BROKER**

240-997-6199

ANTONIS@ALEXANDRIANPARTNERS.COM



703-421-3310
45449 E SEVERN WAY, SUITE 155
STERLING, VA 20166

**A MODERN SPACE TO
ADVANCE YOUR
PRACTICE IN
TOWSON, MARYLAND
BUILDING HIGHLIGHTS**



**EASY ACCESS TO
RESTURANTS**



**HEALTHCARE FOCUSED
OWNWESHIP**



**UPDATED COMMOM AREAS
& RESTROOMS**



**PARKING
AVAILABLE**



WALKING DISTANCE

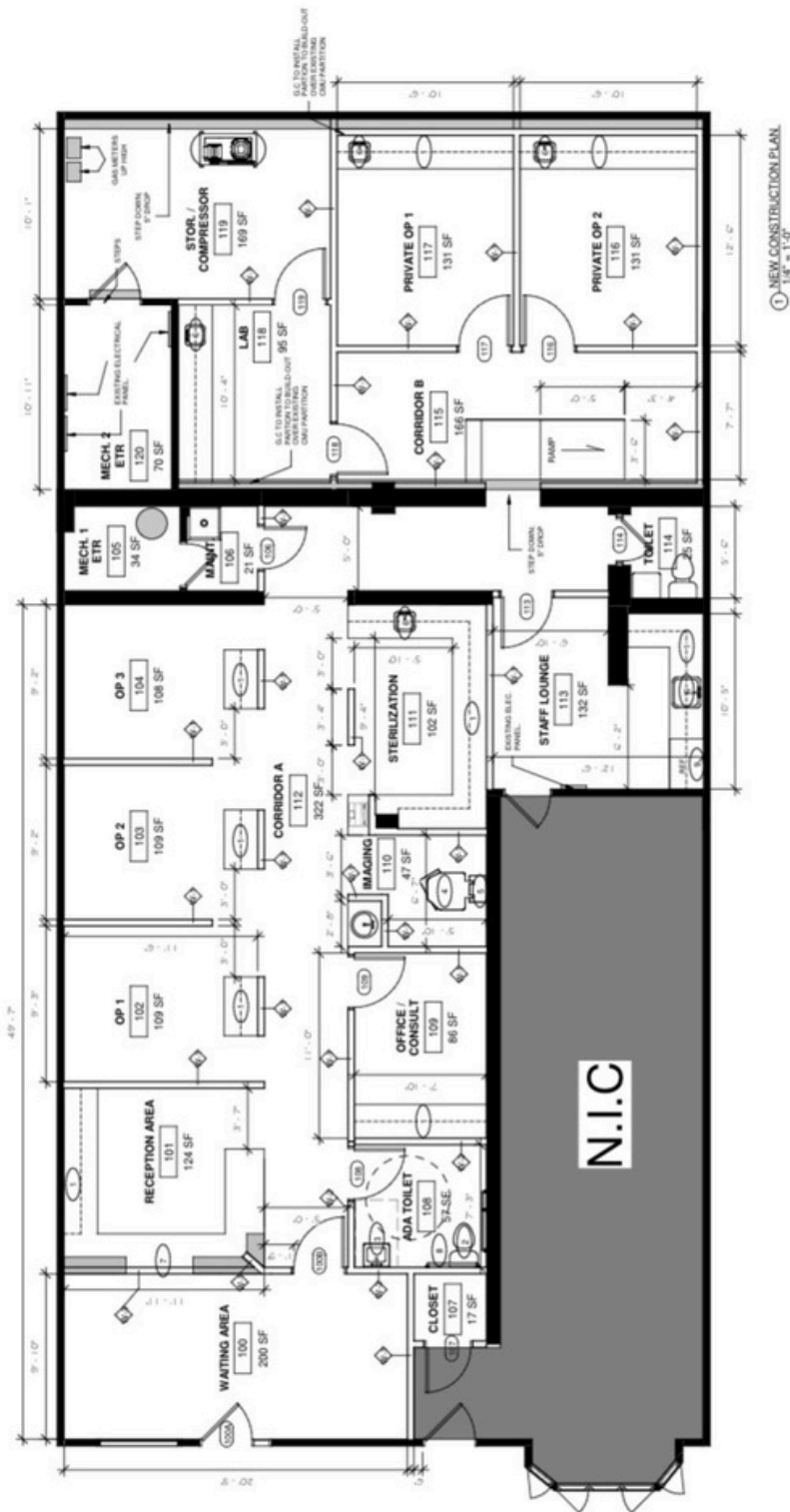
**BRAND NEW BUILT OUT DENTAL
OFFICE IN THE HEART OF
TOWSON,**

SPACE AVAILABLE

**DENTAL OFFICE
WITH 5 OPERATORIES**



1030 YORK RD. FLOOR PLAN



IN HOUSE MEDICAL/DENTAL ARCHITECTURE FIRM TO ASSIST IN CUSTOMIZING EQUIPMENT AND CABINETS.

DEMOGRAPHIC PROFILE

1030 YORK RD, TOWSON, MARYLAND 21204

ANNUAL HEALTHCARE SPENDING



\$80,079,367

2023 HEALTHCARE SERVICES

ANNUAL DENTAL SPENDING



\$5,025,753

2023 DENTAL SERVICES

EDUCATION

1%

NO HIGH SCHOOL DIPLOMA



9%

HIGH SCHOOL GRADUATE



14%

SOME COLLEGE



76%

BACHELOR'S GRAD/PROF DEGREE

EMPLOYMENT



91.4%

WHITE COLLAR



3.6%

BLUE COLLAR



5.0%

SERVICES

1.4%

UNEMPLOYMENT RATE

KEY FACTS

16,374

POPULATION

35.2

MEDIAN AGE

10,904

HOUSEHOLDS

\$100,693

MEDIAN HOUSEHOLD INCOME

COMPANIES WITHIN A 15 MINUTE'S WALK

