



±197 Fenced & Gated Car Parking Stalls
Divisible to ±141 Parking Stalls

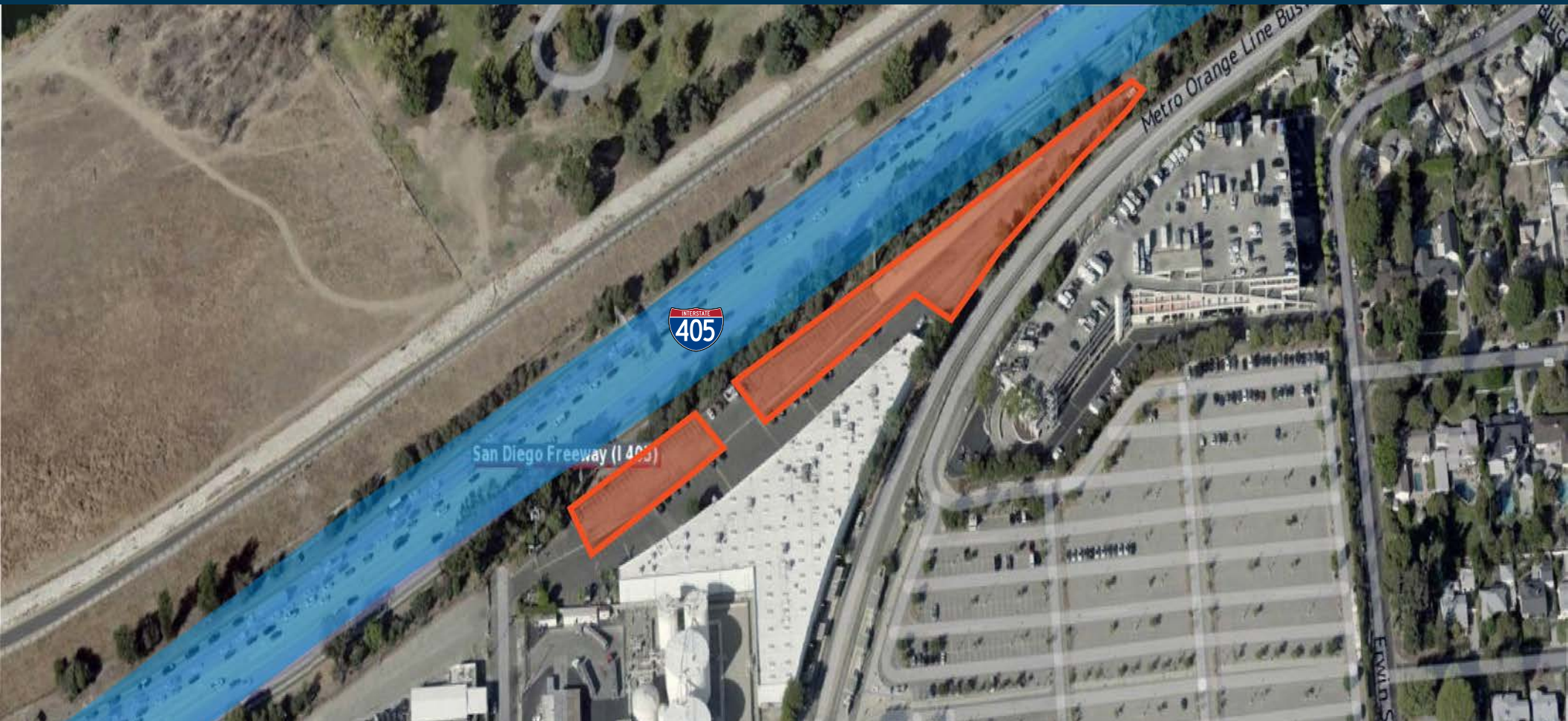


2 MONTHS FREE PER YEAR OF LEASE TERM

65,424 SF LAND FOR LEASE

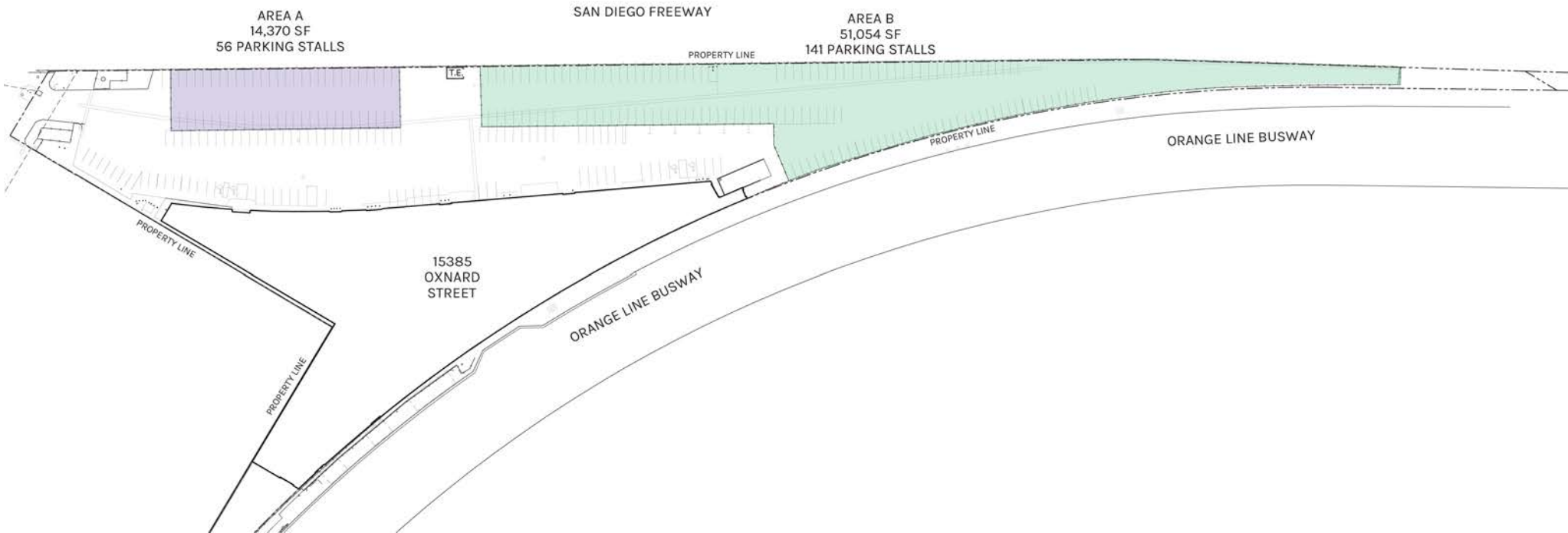
ADJACENT TO OXNARD ST/SEPULVEDA BLVD INTERSECTION AND I-405 FREEWAY
15385 Oxnard St | Van Nuys, CA 91411





PROPERTY HIGHLIGHTS

- 65,424 SF of Land (Potentially Divisible to 51,054 SF)
- ±1.50 Acres Total
- ±197 Parking Stalls
- Truck/Trailer or Other Vehicle Parking Possible
- Fully Fenced/Gated Portion of Larger Industrial Building
- Zoning: M-2
- Lease Rate/Month: \$26,169.60
- Lease Rate Per SF/Month: \$0.40 (First Year)
- Lease Rate Per SF/Month: \$0.50 (Second Year)
- Lease Type: Gross
- Market Area: Central/SFV
- APN: 2242-001-019

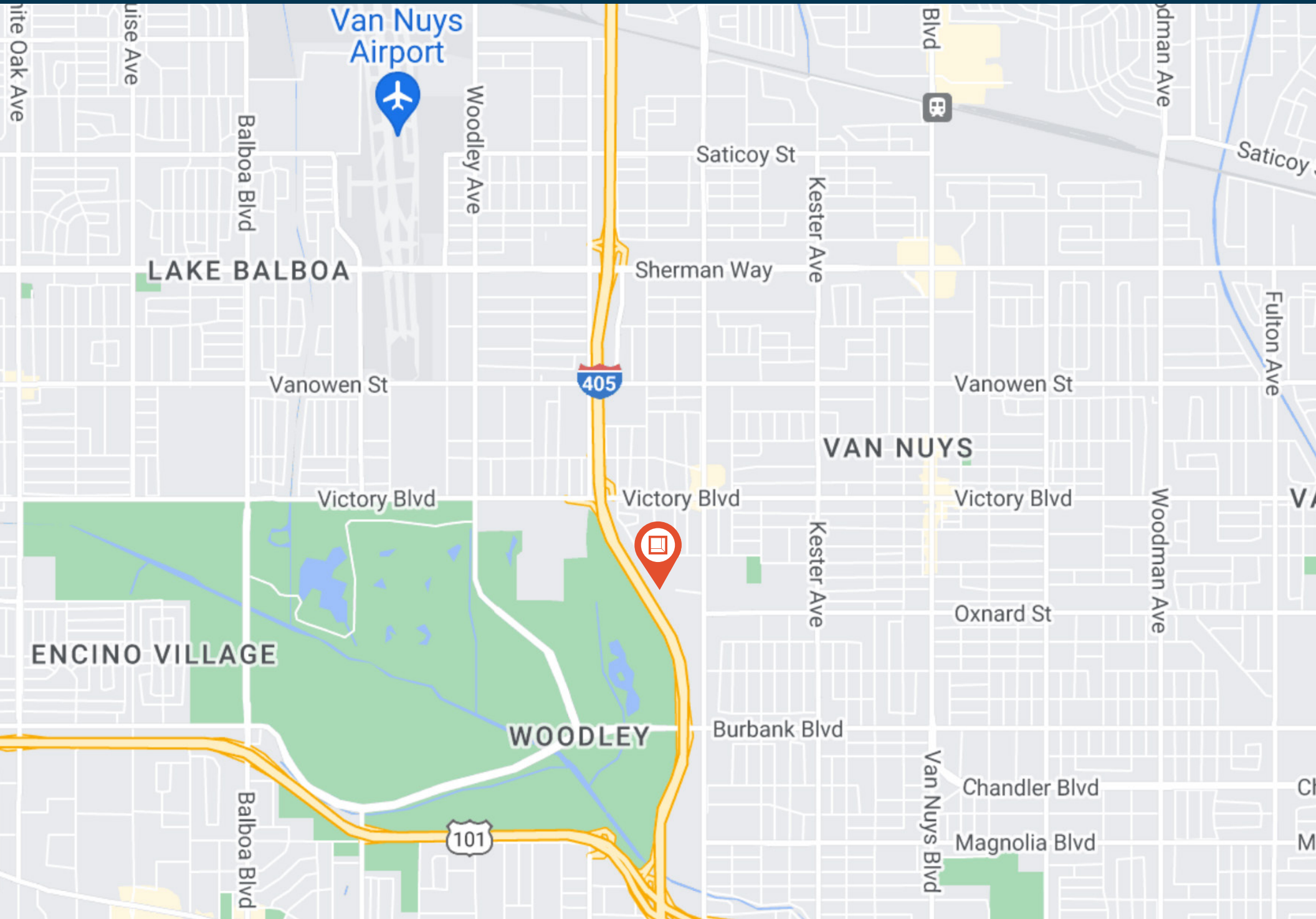


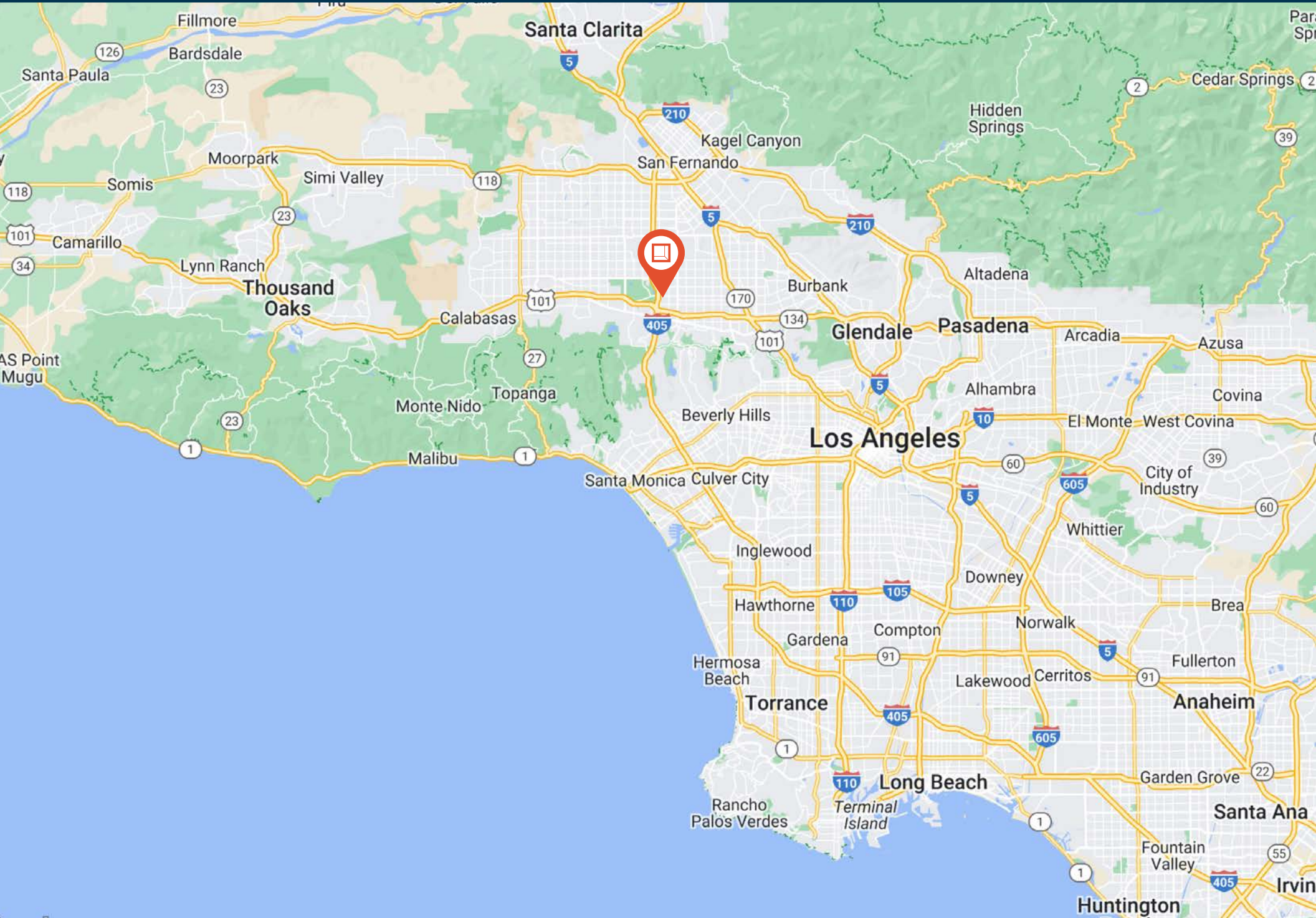
LAND
65,424 SF

PLAN LAYOUT SUBJECT TO FIELD CONDITIONS AND MAY DIFFER FROM PLAN AS SHOWN. ALL INFORMATION PRESENTED ON THIS DRAWING IS PRESUMED TO BE ACCURATE, HOWEVER TENANT SHOULD VERIFY PERTINENT INFORMATION PRIOR TO COMMITTING TO A LEASE. ANY FURNITURE OR APPLIANCES SHOWN ON PLAN ARE FOR CONCEPT ONLY AND WILL BE TENANT PROVIDED.

Location Map

15385 Oxnard St.







**Rexford
Industrial**

Leasing Contacts

CRAIG PETERS

Vice Chairman
818.907.4616
craig.peters@cbre.com
LIC # 00906542

SAM GLENDON, SIOR

Senior Vice President
818.502.6745
sam.glendon@cbre.com
LIC # 01826689

CBRE