

FOR SALE

5,860 SF OFFICE BUILDING SITUATED ON 0.88 ACRES



3401 Highway 169 North & 3400 Kilmer Lane

NEWMARK

Plymouth, MN

Property Highlights



Building Size / Site Size

approximately 5,860 SF situated on 0.88 acres
(two 0.44 acre lots)



Year Built/Renovated

1968/2005



Easy Highway Access & Visibility

Off Hwy 169 and Kilmer Lane



Zoning

C3 - Highway Commercial (Building)
C5 - Commercial/Industrial (Land)



Sale Price

\$1,950,000



Taxes (2026)

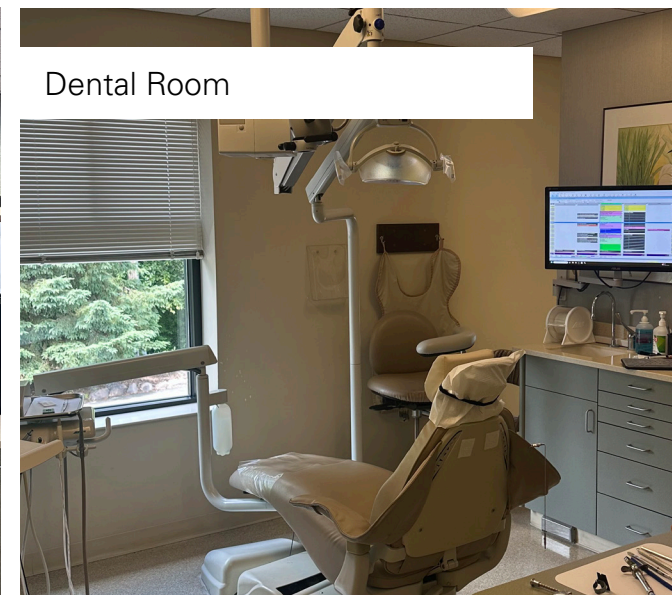
\$33,571.96



New roof 2022 (concrete block construction, flat rubber membrane roof, brick exterior, gutter system)



Lease thru 8/31/2027 at \$11,900 net/month (\$24.37 PSF)



Reception

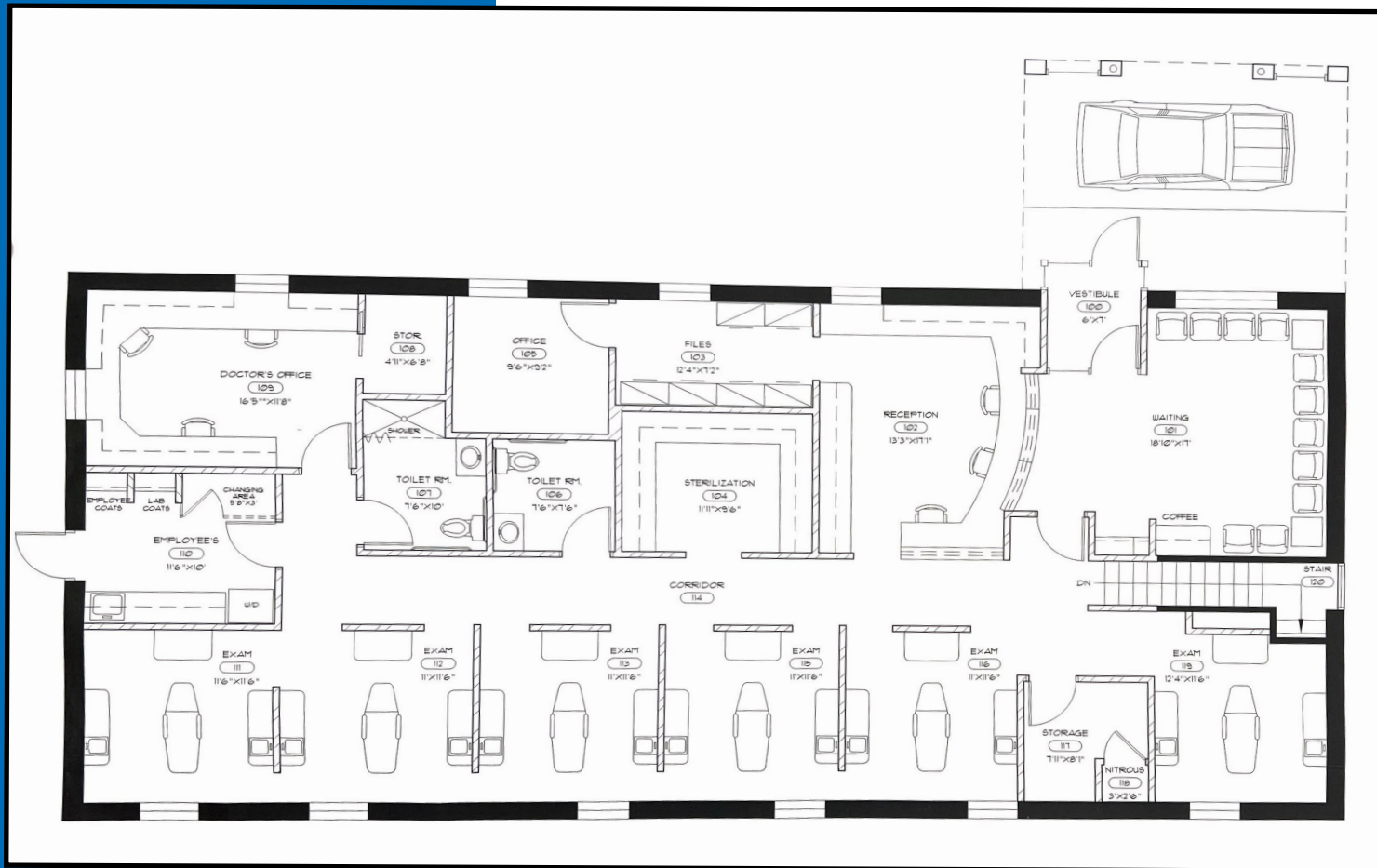
Kitchenette/Break Room

Dental Room

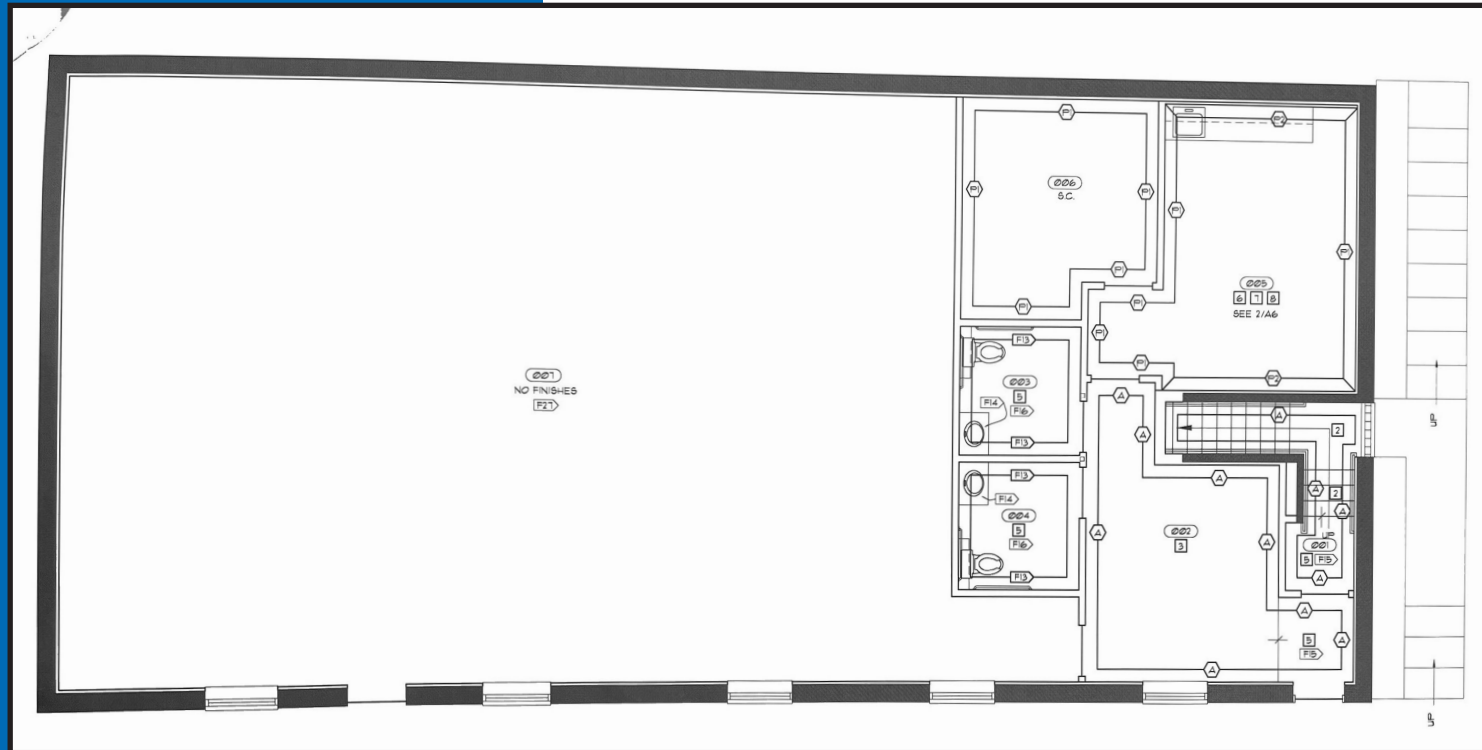
Area Amenities



Main Floor



Walk-Out



Walk-Out level includes:

- Conference Room (not shown)
- Private Office (not shown)
- Breakroom
- 2 Restrooms

3401 Highway 169 North | Plymouth, MN



For more information, contact:

Matt Elder CCIM, SIOR
Senior Managing Director
612-430-9974
matt.elder@nmrk.com

Jennie Kautz
Director
612-430-9975
jennie.kautz@nmrk.com

Jim Damiani CCIM, SIOR
Vice Chairman
612-430-9960
jim.damiani@nmrk.com

100 S Fifth Street, Suite 2100
Minneapolis, MN 55402

nmrk.com

NEWMARK

The information contained herein has been obtained from sources deemed reliable but has not been verified and no guarantee, warranty or representation, either express or implied, is made with respect to such information. Terms of sale or lease and availability are subject to change or withdrawal without notice.